

Public Sales Register

SAT. APRIL 24 - 10 A.M. Mr. & Mrs. Lester "Bill" Ingraham Dispersal, Dundee, N. Y. located on Stone Mill Rd., off Rt. 14A, 2 miles south of Dundee, 12 mi. north of Watkins Glen - watch for arrows. Mr. & Mrs. Lester "Bill" Ingraham, owners; Robert M. Shaylor Sales Mgr. Victor Pirrung and Son, Auctioneers.

SAT. APRIL 24 - 9:30 A.M. Maple Grove Farm Dispersal at Prattsburg, N. Y., 12 miles from Bath, N. Y. Sale by Maple Grove Farm, Roger and Calvin Jeanroy, Owners. Sale conducted by Rumsey Sales, Bath, N. Y.

SAT. APR. 24 - 10:30 a.m. Public Sale of Full Line of Farm Equipment, Tractors, Shop Tools, Trucks. Located on the premises along the Malta Road in lower Mahanoy Township, Northumberland Co., 3 miles West of Pillow, Pa., 2 1/2 mile East of County Line Church. Shaffer Farms, Inc. owners. Adams & Shoop, Auctioneers.

SAT. APR. 24 - 10:00 A.M. Public Sale of Household Goods, Antiques & Shop Tools. Located one half mile north of Cochranville, 4 miles south of Atglen, along Route 41, Chester County, Pa. Terms by: Carl & Mae Wanner. Auctioneer - Leroy Zook & Leon Kurtz.

SAT. APR. 24 - 1 P.M. Sharp. Special First Spring Feeder Cattle Sale. Auction sale located on Rt. 22 6 miles east of Bel Air, Md. via U.S. Rt. 1 or 6 mi. west of Aberdeen, Md. via U.S. Rt. 40 or 95 in Churchville, Harford Co., Md. Sale by Aberdeen Sales Co. Inc.

SAT. APR. 24 - 3:00 P.M. Public Sale of Real Estate located at 201 Irene Ave., Ephrata. Sale by Pat Nehr, Executrix for Margaret E. Koch Estate. Eaby & Eaby Attys. Chet Long, Auctioneer.

MON. APR. 26 - Auction of 50 head of Good & Choice Steers. To be held at Sechrist Sale Co. Livestock Auction,

Rte. 24 5 mi. South of Stewartstown, York Co., Pa.

MON. APR. 26 - 12:30 p.m. Short Notice Public Sale of Dairy Herd, Bulk Milk Tank, Dumping Station & Farm Machinery. Located in York County, 1/2 mile South of Route 462 better known as old U.S. 30. turn south at Broad St. in Hellam, Pa. First farm on right. Watch for signs. Marc A. Lehman, Owner. Preston E. Chronister, Auct.

MON. EVE. APRIL 26 - 7 p.m. DST Annual Spring Special Feeder and Replacement Cattle Sale at the Woodstock Livestock Market, Inc. U.S. Route 11, Woodstock, Va. For further information contact Thomas Eagle or Harry Gochenour, 703-459-4402 or 703-459-4778

MON. EVE. APR. 26 - 7 P.M. Shado-Lawn Farm Complete Dispersal. Located in Delevan, NY, on 2006 Elton Rd. 8 miles south of Arcade, 9 miles north of Franklinville, 3 miles west of Farmersville & Rt. 98 and 6 miles east of Delevan, NY. Owner - Ervin & Marie Niles. William Kent, Inc. Vic Kent, Auct.

TUES. APRIL 27 - 1 p.m. Special Graded Feeder Pig Sale at the Lancaster Stockyards, Inc., Lancaster, Penna.

TUES. EVE. APRIL 27 - 6 P.M. Public Auction of Antique 1946 Ford Pickup truck, other Antiques and Household Goods located along Route 30 in Paradise, near Mennonite Church. Sale by Dave Huber; Ira Stoltzfus and Son, Auctioneers.

TUES., APR. 27 - 11:30 A.M. Willow Brook Farm Dispersal. To be held at the Ass'n. Sales Pavilion, 6 miles East of Lancaster. James L. & Elizabeth Christie, Watertown, Conn., owners. Sale managed by PA Guernsey Breeders Ass'n., P.O. Box 458, Camp Hill, PA 17011

TUES. APRIL 27 - 5:30 P.M. Public Sale for Ventures In Plastic, 245 Park Ave., Lancaster, Pa. Ronald Funk, Auctioneer.

TUES. APR. 27 - 12:00 Noon. 26th Central Penna. Spring Classic Sale, Reedsville, Pa. Located at the Reedsville Youth Park in Mifflin Co. about 60 miles northwest of Harrisburg, Pa. along Rte. 322. Exit at Reedsville onto Rte. 655 and go to village. Watch for signs. Sale by Central Penna. Holstein Breeders. R. Austin Backus Inc., Auctioneers.

TUES. APRIL 27 - 7:30 p.m. Feeder Cattle Sale at Front Royal, Va.

TUES. EVE. APRIL 27 - 7:00 p.m. Cosby Night Dispersal. Located Westfield, Pa. (Tioga Co.) watch for auction arrows on Rt. 49 by Cowanesque High School. Mr. & Mrs. Bill Cosby, owners. Robert M. Shaylor Sales, Inc.

TUES. APR. 27 - 8 p.m. D.S.T. Smoketown Quality Dairy Sale. Located 5 mi. east of Lancaster, 5 mi. west of Intercourse, Rt. 340. Sale by Gordon W. Fritz. Auctioneers - Frank & Paul Snyder.

TUES. APR. 27 - 6:00 p.m. In addition to our regular sale, 75 Head Angus-Hereford Stock Cattle consigned by Wm. F. Adams. To be held at Harry Rudnick & Sons, Inc. Livestock Sales. Sale managed by Harry Rudnick & Sons, Inc., Galena, Md.

WED. APR. 28 - 10:30 a.m. Public Auction of Tractors, Trucks & Farm Machinery. Located in Reinholds, Lancaster Co., Pa. Terms by Jacob H. Gockley. Rentzel and Wolgemuth, Auctioneers.

THURS. APR. 29 - 10:00 A.M. Complete Dispersal Sale of Reg. & Grade Holstein Dairy Cattle, Tractor and Machinery. Located on

Hopewell Rd., Hagerstown, Md. (Off I-81 at Halfway Blvd., 1/4 mile west to Hopewell Rd., 1/2 North on Hopewell Rd. to farm). Mr. & Mrs. Robert Eugene Carr. Auctioneer - Robert C. Mullendore.

THURS. EVE. APRIL 29 - 6 P.M. Public Sale of Real Estate, Antique Shoemakers Equipment, Tools, and Supplies of F. Herbert Kunkle of Delta, York Co., Pa. located at 521 North Main St., Delta Boro, York Co., Pa. Real Estate at 7:30 P.M. S.P.N.B. Guardian, D. Reed Anderson, Atty.; Robert L. Sechrist, Auctioneer.

THURS. APRIL 29 - 5:30 p.m. Public Auction at the Hat & Gavel Auction Co.

located one mile North of Litzitz along Rt. 501. Wilbur H. Hosler, Auctioneer.

THURS. APR. 29 - 11:00 a.m. Sharp. Clarks Summit State Hospital Dairy Dispersal. Located at the dairy barn off route 307 and Newton Ransom Boulevard, 2 miles south east of Clarks Summit, Pa. Watch for auction arrows. Owners - Clarks Summit State Hospital. Bob Earl, Auctioneer.

THURS. APR. 29 - 11:00 a.m. Public Sale of Farm Equip., Old Tools, Antiques & Gun. Located along West View Road, Pequea RD1, Lanc. Co., Pa. (at Martie Forge Hotel turn south on River Road; go to West View Road & turn right; sale loc. between Mount Nebo & Pequea.

CLARKS SUMMITT STATE HOSPITAL DAIRY CATTLE DISPERSAL

CLARKS SUMMITT, PA. LACKAWANNA CO.

Having discontinued our dairy and farm program, we will offer our dairy cattle at auction, at the dairy barn located off Route 307 and Newton Ransom Boulevard, 2 miles south east of Clarks Summit, Pa. Watch for auction arrows.

THURSDAY, APRIL 29, 1976

11:00 A.M. SHARP.

96 head of high grade Holstein cattle. Herd of 41 milch cows, 25 heifers and 30 steers. 5 fresh as of March 1st. 8 to freshen in April and June. 10 to freshen in June and July. Bal. bred for fall freshening. 9 heifers pasture bred as of Aug. 1st, 1975. 14 heifers open or bred in March and April of 1976. 30 steers age 3 mos. to 1 year.

These cattle are bred and raised on this farm from NEPA sires. These cattle are young, good size, dairy type, and production you will see on DHIA test. Come prepared to buy these profitable cattle. T.B. and blood tested. Pregnancy checked. Health charts.

TERMS: Cash, Cashiers Check, or Approved Check. Tent Lunch

OWNERS:

CLARKS SUMMITT STATE HOSPITAL

Auctioneer: Bob Earl and Sales Manager R.D.3, Wyoming, Pa. 333-4179

Hospital and Auctioneer not responsible for accidents. Cattle to be removed within 24 hours. Cattle sold on clear sale basis.

Planning to Sell, Call About Our Complete Sale Service.

HUNTER'S SALE BARN, INC.

Rising Sun, Route 276, Maryland (Formerly West Nottingham Sales) Phone: 301-658-6400

Every Monday Livestock, Poultry, Egg, Produce - 7:00 P.M. Household & Antiques 6:30 P.M. Flea & Farmers Market 3:00 P.M.

Accepting consignments now on farm equipment, tractors, cars, trucks, tools, building supplies of all kinds. CALL NOW FOR ADVERTISING & PLANNING. COME TO BUY OR SELL - HAULING AVAILABLE - RESTAURANT ON GROUNDS.

Maryland Angus Spring Quality Sale

Fri., May 7, 1976 7:00 P.M.

Frederick, MD Fairgrounds. Cocktails & Dinner - 5 P.M.

65 HEAD: BULLS, COWS, COWS WITH CALVES, BRED & OPEN HEIFERS.

CATALOGS & INFO: Mrs. Caryl Velisek 1868 Rt. 94 Woodbine, MD 21797 Ph: 301-489-4519

26TH CENTRAL PENNA. SPRING CLASSIC SALE

TUESDAY, APRIL 27, 1976

(12:00 Noon) REEDSVILLE, PA

At the Reedsville Youth Park in Mifflin Co. about 60 miles northwest of Harrisburg, PA along Rte. 322. Exit at Reedsville onto Rte. 655 and go to village. Watch for Signs.

60 REGISTERED HOLSTEINS

All eligible for interstate shipment.

ALL HAVE BEEN HAND-PICKED!!

High quality Holsteins hand picked from Central Penna. leading herds. The sale features depth of pedigree, popular breeding, plenty of production. Always a good selection of bred heifers, top young cows along with a few top calves. See Apr. 10 "World" for complete details.

MAKE YOUR PLANS NOW TO ATTEND AND BUY IN THIS LONG ESTABLISHED SALE!!

Sale starts at Noon Lunch available Catalogs Under Cover

CENTRAL PENNA. HOLSTEIN BREEDERS

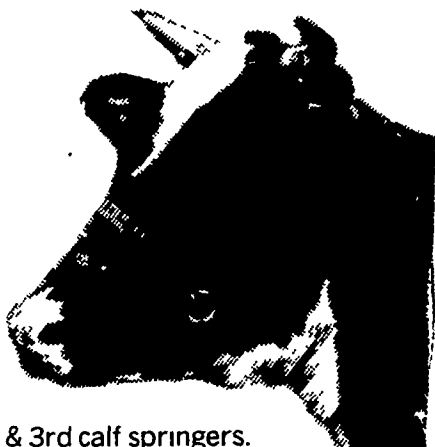
Don Adams, Sale Chm. Port Royal, PA R2

R. AUSTIN BACKUS INC. Sale Mgrs. & Auctioneers Mexico, NY

FOR THE DISCRIMINATING DAIRYMAN

M-R-Y HOLSTEINS

AVAILABLE TOP QUALITY REGISTERED & GRADE HOLSTEINS



GRADE HOLSTEINS:

A nice selection of good quality 1st, 2nd & 3rd calf springers.

REGISTERED HOLSTEINS:

Selected from a group of registered heifers. ABS & NEBA sired. Just ready to breed.

BRED HEIFERS:

Sired by Elevation, Arlinda Chief, Citation R Maple & Bootmaker. These are heifers with good production & classification on the maternal side of pedigree.

Available - Quality Reg. cows with good production records that would make fine herd replacements.

Quality Holsteins at a Price You Can Afford.

M. ROBERT YOUNG 717-299-7372