

Retired mechanic is hort enthusiast

By MELISSA PIPER
MOUNT JOY — At the healthy age of 84, Larry Williams is actively engaged in horticulture and taking care of myriad shrubs, flowers and seedling trees at the "Dell" Estate here.

An employee of Green Acres Nursery in Lititz, Williams has held his job for the past five years and in his words, "loves every minute of it!"

Williams learned the art of carefully grafting trees, raising seedlings, pruning shrubs and taking care of horticultural duties from his father. An immigrant from Italy, Williams studied his father's work from the age of toddler until 18-years old when he came to America.

Although a mechanic in Philadelphia for many years, Williams never lost his touch for growing plants and since his employment with the nursery has built several hotbeds for seedlings.

"I wanted to protect these seeds from the birds," Williams noted pointing toward his hotbeds, "we constructed these protected areas and it has helped in

raising many more seedlings for future planting."

Working with plants has given Williams a sincere appreciation for nature and the horticulturalist can point out many a squirrel nest in the trees overhead. One of his present projects is to photograph a wren which built a nest in the corner of his backporch. Williams is waiting for the bird to lay her eggs and hopes to capture the activity on film.

The former Indianapolis car racer, Williams agrees that he has led an exciting life but enjoys living near and caring for things of nature. His handiwork is evident from the carefully tended patches of flowers, Holly trees, delicate seedlings and the plants which hang from his porch.

"I'm taking each day at a time," he explains, "but being in the out of doors makes it pleasant."

With his kind face and gentle manner, Williams could pass for anyone's kindly grandfather but his knowledge and working ability gives him an extra special talent in life.



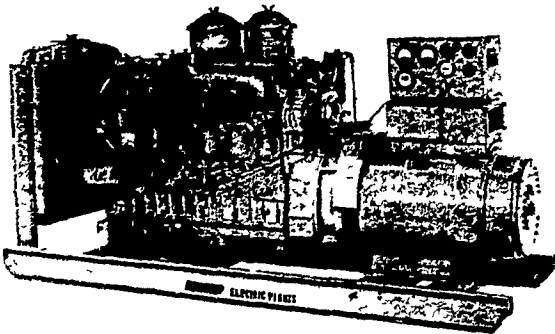
Larry Williams is still an active horticulturist at the healthy age of 84. The gentleman learned the business from his father, as a child in Italy.

READ LANCASTER FARMING FOR FULL MARKET REPORTS

Electric Generating Systems

Built to Your Specifications
Manual or Automatic

L. P. Gas — Diesel — Gasoline —



Sales - Service

Martin Electric Plants

Isaac W. Martin, Owner
Pleasant Valley Rd., RD2
Ephrata, PA (717) 733-7968

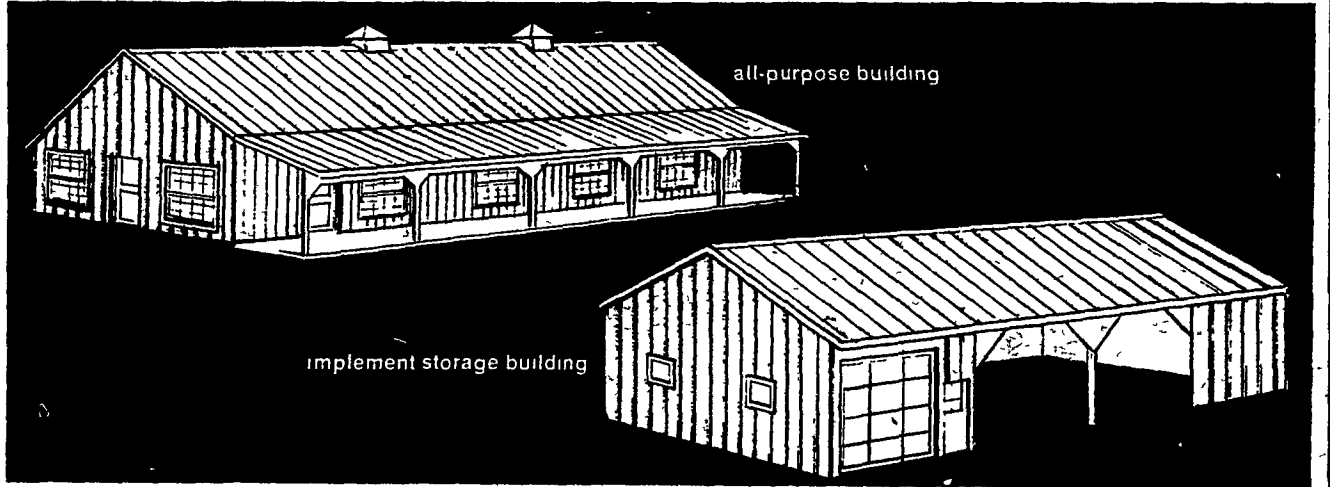
FARMERS: Build Now! with Channe drain.

(IT HAS THE WEATHER BEATEN!)

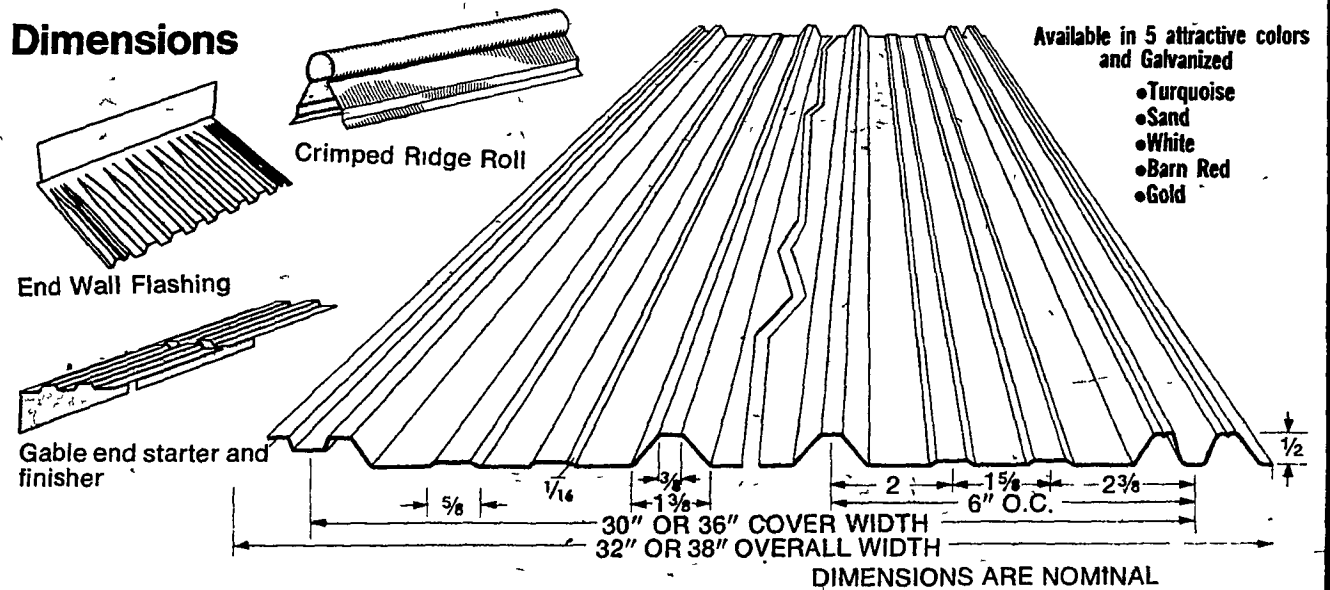
Wheeling . . . ROOFING & SIDING

FOR ALL TYPES OF BUILDINGS

PREFERRED BY MOST FARMERS TODAY



Dimensions



Available in 5 attractive colors and Galvanized

- Turquoise
- Sand
- White
- Barn Red
- Gold

Material and labor costs continue to rise. If you put a building off 'till next year, you may have to build less building. Build now. With Wheeling Channe drain pre-painted steel roofing and siding. *Exclusive drain channels run water off, keep inside bone dry. *Extra Wide sheets 32" or 38" - save panels, money, and time!

FREE NEW, 192-PAGE POCKET BOOK.
PUBLISHED BY THE MOST RESPECTED
MAKER OF ROOFING AND SIDING FOR
FARM BUILDINGS: WHEELING.

10-Chapters, including

- | | |
|-----------------------------|-----------------------------|
| Site Preparation and Layout | Environmental Controls |
| Foundations | Roofing and Siding |
| Floors | Farm Management & Financing |

Exclusive at:
Your Channe drain Headquarters
G.R. Mitchell



WHEELING CHANNEDRAIN REPRESENTATIVE ON HAND TO ANSWER ANY QUESTIONS.

FRIDAY, APRIL 23RD

10 A.M. till 5 P.M.

REFTON LOCATION

SATURDAY, APRIL 24TH

10 A.M. till 3 P.M.

LANCASTER LOCATION

32" Galvanized Channe drain in Stock up to 20 ft. Lengths
Choice of color Channe drain guaranteed delivery within two weeks.

Two Convenient Locations

G. R. MITCHELL, INC.

REFTON LOCATION

Refton Rd. 786-7395
Mon. thru Thur. 7:30-5:30; Fri. 7:30-8:30
Sat. 7:30-Noon
6 Miles So. of Lancaster Off Rt. 222.

1287 LOOP ROAD
Lancaster, Pa. 397-7446

Mon., Tue., Thur. 7:30-5:30; Wed.
& Fri. 7:30-8:30; Sat. 7:30-3:00

