

# PFA ladies

[Continued from Page 48] Stephen - 16; Kay - 13 and and Kathryn) along with their children, Jay - 17; much time and effort into



A hollowed out tree trunk, once used as a waterline for an underground spring, was salvaged and used to make a pole lamp for the Kreider family room. A smaller piece of wood was used for a hanging lamp also.

making their older farm home relive its historical foundations.

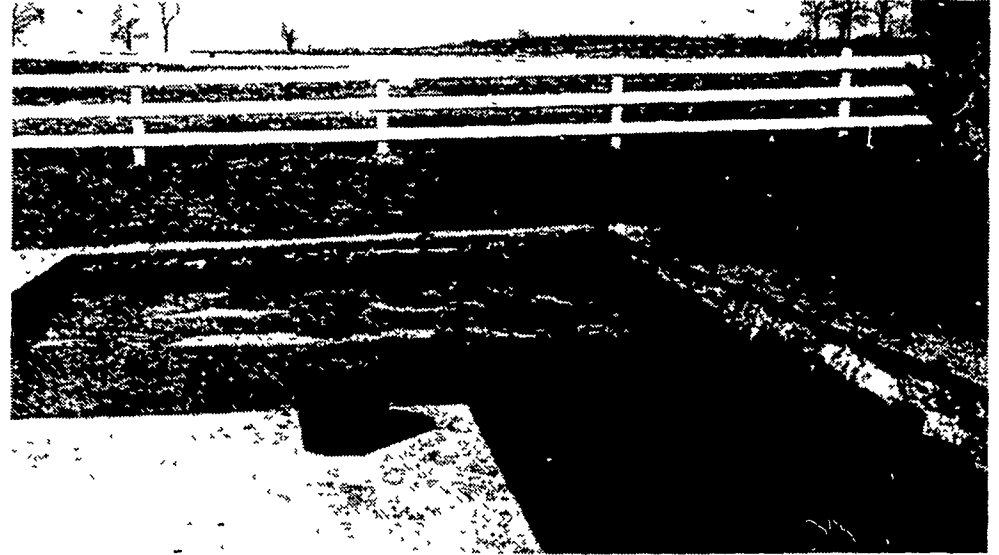
The family operates a dairy farm and are active in many community and farm affairs.

## Kreiders Own Farm Seven Generations

Across the county - off Willow Road - is the Kreider Homestead currently owned by John Kreider, the seventh generation to have lived on "Trout Spring Farm."

The graceful stone house was built in the early 1700's although no specific date has been recorded. Almost 150 years later an addition was added to the original structure and from that time on it has been remodeled to suit the tenants.

The home was quite similar to many found in the Lancaster County area of the same time period with Christian doors and German-



The Kreiders "Trout Spring Farm" is surrounded by stone walkways and picnic areas on the patio.

style locks and hinges. Heavy oak beams also constituted the ceiling structures and have proven to be a "decorater's dream"

in the newly renovated living room.

One of the first rooms that the John Kreiders tackled in remodeling was the older living area. At first it was decided that a new kitchen would be located in the spacious square room but further discussions prompted the Kreiders to use for a family room instead. A large stone fireplace was exposed and heavy round beams gave the room a rustic appearance.

Although the wainscoting, which lined the room, was originally destined for removal, Mrs. Kreider decided to keep the antique look and utilize the wood-working to enhance the colonial atmosphere of the family room. It took one whole summer of scraping, sanding and painting to revitalize the wainscoting but the green shades of the woodwork has been blended with wall paper to make the room a comfortable and cozy center.

One of the most unique

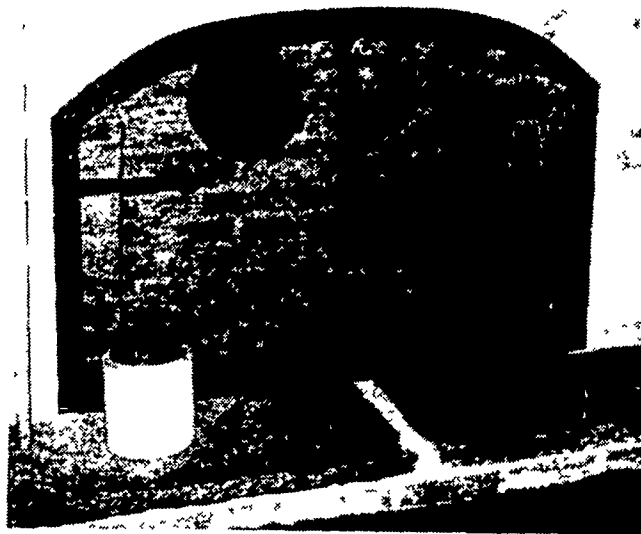
features of decor in the Kreider's family room is the lamp post made from hand-hewn trunks which constituted an old waterline around the farm pond. Almost 300 years old, the trunks were salvaged and made into lamp posts and fixtures, keeping a farming tradition alive for inspection.

The Kreiders are also antique collectors and are hoping to complete a period dining room in the future. A smokehouse is also included in the attic and has been kept in its original state.

Trout Spring Farm was so named for its pond and waterways which have been stocked with the fish. An overflow spring leading to the pond has been worked into a patio-garden setting in the Kreider's backyard. Using flagstone to create a picnic area surrounded by the open water channels, the trout can be viewed by the many visitors to the farm.

Also located in the backyard is an old brick

[Continued on Page 52]



A Philadelphia-style arched fireplace is one of the many to grace the Barley's downstairs rooms. Antique collectables decorate the flagstone hearth.

## LANCASTER SILO CO., INC.

2008 Horseshoe Road - 2436 Creek Hill Road  
LANCASTER, PA 17601

"We Manufacture and Erect our Silos"  
VIBRATED "LOCK-RIB" WET CAST  
CONCRETE STAVE SILOS



COMPLETE DAIRY AND BEEF  
FEEDLOT SYSTEMS  
STARLINE EQUIPMENT SALES & SERVICE

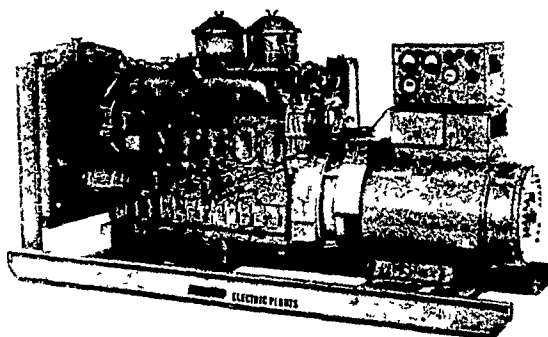
"Starline" Silo Unloaders - No. 70 & No. 101  
"Starline" Shuttle Feeders & Conveyors  
"Starline" Barn Equip. & Barn Cleaners  
"Starline" Water Bowls & Door Track  
Roller Mills - Protein Meters & Weighers  
Silage Weighers - Chute Hoppers  
"Clean-Chute" Kits for Silo Chutes  
Supreme 56" P.T.O. Silage Blowers  
Ritchie Cattle & Hog Waterers (in stock)  
Barn Fans - Barn Windows - Cow Mats  
Free Stalls - Hay Racks - Head Gates  
G.E. "Farm-Duty" Motors - 3/4 thru 10 H.P.  
"Lancaster" Wood Taper Board Feeders  
"Lancaster" Double Chain Slat Conveyors  
(These units built to fit your system)  
"Lancaster" Belt Feeder Units  
"Patz" Silo Unloaders

FOR INFORMATION CALL: 392-9062 OR  
Guy Rohrer (Lanc. Area) 872-4411  
Larry Hiestand (Leb. Area) 273-7394

## Electric Generating Systems

Built to Your Specifications  
Manual or Automatic

L. P. Gas - Diesel - Gasoline -



Sales - Service

## Martin Electric Plants

Isaac W. Martin, Owner  
Pleasant Valley Rd., RD2  
Ephrata, PA (717) 733-7968

## BUNK FEEDERS-WOODEN CONVEYORS



CUSTOM BUILT TO YOUR SPECIFICATIONS.

- +INCLINE TO LEVELS
- +DROP OUTS ANYWHERE
- +USES VERY LITTLE HORSE POWER

COMPARE THE COST

.....

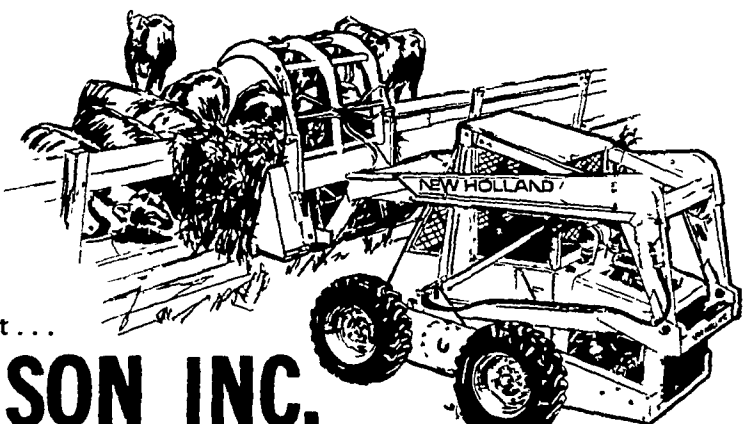
EXPERIENCED SERVICEMAN

## DONALD R. NISSLEY

Box 170, New Providence, PA 17560  
Phone (717) 786-7654

## SPERRY NEW HOLLAND UTILITY LOADERS ADD MECHANICAL MUSCLE TO YOUR OPERATION.

- Four models available from 18 to 60 hp!
- Exclusive - Patented lift linkage gives you forward dump reach at maximum dump height! Loads right into the center of a tandem axle manure spreader!
- Low center of gravity permits quick, smooth turns!
- Fully hydrostatic drive!
- Attachments include buckets, blades, grapple, utility fork, backhoe, post-hole digger, and many more!



See a Sperry New Holland Utility Loader at . . .

## C. E. WILEY & SON INC.

QUARRYVILLE, PA PHONE: (717) 786-2895