

Hog Markets

Lancaster Market

HOGS: Barrows and gilts 1.00-1.75 higher.
BARROWS AND GILTS:
 US 1 200-230 lb. 49.00-49.50;
 US 1-2 200-240 lb. 48.50-49.00;
 US 1-3 200-250 lb. 47.50-48.50;
 US 2-3 250-270 lb. 45.00-47.50.

Lancaster Auction

HOGS: Barrows and gilts 1.00-1.50 higher.
BARROWS AND GILTS:
 US 1 210-235 lb. 50.00-50.50;
 US 1-2 200-240 lb. 49.75-50.10;
 US 1-3 200-250 lb. 49.00-49.75.

Vintage

April 3
 HOGS: 925 barrows and gilts steady to 75 cents lower.
 US 1-2 48.75-50; US 2-4 35-39.50; US 1-3 47-48; US 1-3 44.50-45.50 and 2-3 46-46.85.
 Sows 35.50-37 and boars 36.50-43.50.

Peoria Auction

Thursday Apr. 8
 HOGS: 3500 Barrows & gilts moderately active, opening mostly steady instances 25 lower than Wednesday's best time.
 US 1-2 200-230 lb. 48.50-49.00; about 200 head; US 1-3 200-240 lb. 48.00-48.50.

Indianapolis

Thursday, Apr. 8
 HOGS: 2000 Barrows & gilts active, steady to 25 higher.
 US 1-2 200-230 lb. 48.75-49.00; US 1-3 200-250 lb. 48.25-48.75.

Lebanon Valley

HOGS 500. Barrows and Gilts fully 50 cents higher.
 US No. 1-2 210-230 lbs. barrows & gilts 48.75, No. 1-3 200-235 lbs. 47.60-48.25, No. 2-3 185-250 lbs. 46.50-47.60, No. 2-4 250-280 lbs. 44.25-46.00. US No. 1-3 300-580 lbs. sows 39.25-42.25. Boars 32.00-36.25.
FEEDER PIGS 8. One lot US No. 1-3 35 lbs. feeder pigs 30.50 per head.

New Holland

Monday, April 5
 HOGS: 1544 compared to last week barrows and gilts unevenly steady. US 1-2 48-49; US 1-3 47.25-48; US 1-3 45-47.25; sows 35-41 and boars 35-40.

St. Louis

Thursday, Apr. 8
 HOGS: 5500 Barrows & gilts fairly active, steady to 50 higher than Wednesday's close. Near 300 head US 1-2 210-235 lb. 49.00; US 1-3 200-240 lb. 48.50-48.75; US 2-3 230-250 lb. 47.50-48.50.

New Holland Dairy

Wed., April 7
 Reported receipts of 104 cows, 15 heifers. Market steady with last week.
 Load of Wisconsin fresh cows, 620-910.
 Load of Pa. fresh cows, 395-735.
 Load of Pa. fresh cows, 685-900; springers 625-750.
 Load of Franklin Co. cows, 570-735.
 Load of Maine springers 450-900.
 Locally consigned cows 350-530; springing heifers 325-410; open heifers 450-525.

New Holland Horse

Monday, April 5
 Reported receipts of 385 horses, mules and ponies. Market stronger.
 Local work horses 435-500; mules 425-750; better horses 275-780; driving horses 175-735; riding horses 150-250; lightweight killers 20-25; heavyweight killers 28-30; mares 25-55; colts 10-30; geldings 25-30; larger ponies 75-160.

Local Grain

Friday, April 9
 These prices are made up of the average prices quoted by a number of participating area feed and grain concerns. It should be noted, however, that not every dealer or broker handles each commodity. All prices are per bushel except ear corn and soybean meal which are per ton.
 The average prices quoted Friday, April 9, are as follows:

	Bid+	Offered+
Ear Corn	63.00	70.00
Shelled Corn	2.65	2.89
Barley	1.89	2.05
Oats		
Local	1.51	1.71
Western	1.82	1.99
Wheat	3.19	3.41
Soybeans	4.62	4.90
Soybean Meal	169.50	

East Coast Carlot Meats

April 7, 1976
 Compared to Wednesday's close: demand and inquiry moderate for steer beef. Choice steer beef 3.25-3.50 higher. Lamb steady to 4.00 lower, spring lamb steady. Fresh pork: loins 25-1.25 lower; skinned hams 17-20 lb. 1.00 higher, 20-26 lb. 2.50 lower.
STEER BEEF: Prime 600-800 lb. YG 3 Ltd. 66.50; Choice 600-800 lb. YG 3 65.50-66.00, late 66.00, 3.25-3.50 higher; 800-900 lb. YG 3 64.50 Early; 600-800 lb. YG 4 60.25-64.50, late 64.50.
HEIFER BEEF: Choice 500-700 lb. YG 4 59.25 Early.
COW BEEF: Canner & Cutter Yield grade 1-2 60.00 1.00-3.00 lower.
CHOICE PRIMAL BEEF CUTS YIELD GRADE 3: Steer hinds 149-190 lb. 75.00-76.00, Heifer hinds 74.00-76.00, 2.00-4.00 higher. Arm Chucks 90-130 lb. 51.50-53.00.
LAMB CARCASS: Choice & Prime YG 3-4 55 lb. Down 110.00 Only Steady to 2.00 lower; 55-65 lb. 108.00-110.00 Steady to 2.00 lower; 65-75 lb. 105.00 Only 4.00 lower.

Futures Trading

(Closing bids as of Thursday, April 8)

	Chicago Cattle	Chicago Hogs	New York Maine Potatoes	New York Fresh Eggs
April	44.82	50.00		42.70
May			10.95	41.25
June	47.60	50.75		43.15
July		49.75		
August	46.77	46.80		
September				50.60
October		42.60		

Trend — Cattle are Mixed, Hogs are Lower, Potatoes are Lower, and Eggs are Lower.
 Market Provided by Commodity Department Reynolds Securities, Inc.

Chicago Grain Futures

(Closing bids as of Thursday, April 8)

	Corn	Wheat	Soybeans	Soybean Meal
April				
May	2.67½	3.53	4.81	
June				
July	2.71½	3.60	4.90½	134.70
August				136.20
September	2.70	3.67	4.98	137.60
October				

Trend — Corn is Higher, Wheat is Stronger, Soybeans are Stronger, and Soybean Meal is Higher.
 Markets Provided by Commodity Department Reynolds Securities, Inc.

U. S. Inspected Livestock Slaughter

Estimated Daily Livestock Slaughter Under Federal Inspection

	CATTLE	HOGS	SHEEP
Week to Date	540,000	1,127,000	106,000
Same Period Last Week	573,000	1,096,000	104,000
Same Period Last Year	507,000	1,124,000	114,000

SPRING LAMBS YIELD GRADE 3-4: Choice & Prime 55 Down 110.00-114.00 Steady.
FRESH PORK CUTS: Loin 14-17 lb. 86.25-88.00 25-1.25 lower; Spareribs 3 lb. down 112.00 Only; Skinned Hams 17-20 lb. 92.00 Only 1.00 higher, 20-26 lb. 76.50 Only 2.50 lower.
BONELESS BEEF: 90 percent Chemical lean Fresh 84.00-88.00 Steady to 4.00 higher; 85 percent Chemical lean Fresh 77.25.

New Holland

April 5, 1976
 HOGS 1524: 48-49. 195-225 47-48; 225-260 45-47. Sows 35-41. Boars 35-40.

PROGRESSIVE FARMERS WANT PROFESSIONAL CONSULTATION

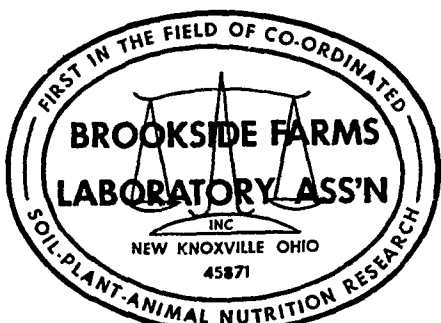


1. Is pH a false indicator of calcium levels in your soils?
2. Is sulphur holding back the yield, protein content and digestibility of your crops?
3. Is excessive magnesium what makes your land so wet and late?

If your present soil tests don't answer these questions, you will profit by our technical help. SOIL TESTS ARE DIFFERENT! Our **complete** soil analysis will help you **balance** soil fertility, which means more efficient cropping and feeding - less bought feed and fertilizer - more yield and profit.

WE SELL NO PRODUCTS — ONLY RECOMMENDATIONS

There is a reason why progressive farmers with sharp pencils hire us year after year for soil analyses and recommendations. We save them dollars. Balance makes crops to be proud of. Now is the time to talk it over with:

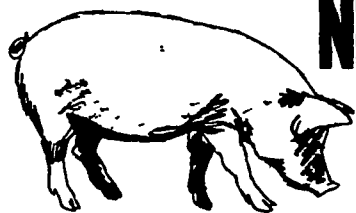


National Reputation - Local Service

STUART HARNISH
 Pottstown, PA
 (215) 469-6396

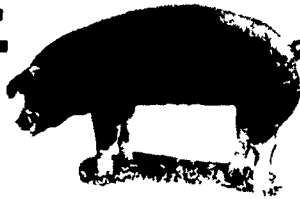
JOHN CAMPBELL
 Atglen, PA
 (215) 593-5529

GARY MCGEE
 Spring Run, PA
 (717) 349-2340



NEXT FEEDER PIG SALE

TUESDAY, APRIL 13
 1 P.M.



Consign all your feeder pigs to Walter M. Dunlap & Sons where they will be handled by a capable and experienced staff.

WALTER M. DUNLAP & SONS

LANCASTER STOCK YARDS

Consignors can get state tags at our office, thereby saving 25c marketing expense.

For Further Information, Call 717-397-5136

J. M. HOOBER INC.

For Over 80 Years
 A Company You Can Trust
 & Have Faith In

ATTENTION LAMB CONSIGNER:
 Monday, April 12

There will be a special graded sale for your lambs. Be sure to have your stock here & take advantage of the Easter prices.

NEXT FEEDER PIG SALE
 APRIL 13, 1976

You can save yourself 25c per head by tagging at home. We supply free State tags at our office.

LANCASTER STOCKYARDS

PLEASE CALL US SOON
 Phone (717) 397-6191,
 569-2084, 626-5659.