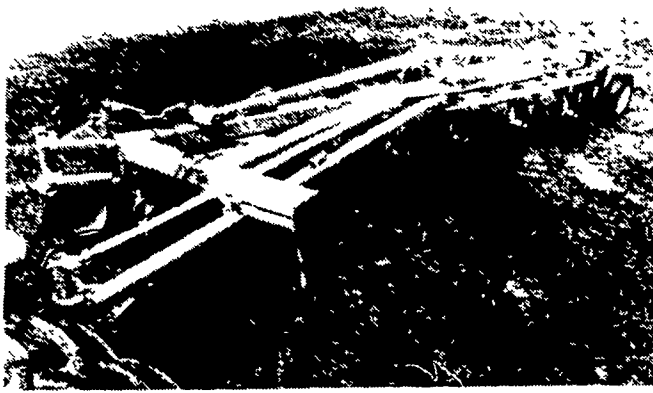


What's New . . .



HYDRA-WIDE PLOW

This new plow is equipped with an on-land, semi-mounted, 2-point hitch, and is available in seven or eight bottoms. The 900 Series has all the basic features of other Hydra-Wides which include hydraulically adjusting cutting width on-the-go from 14 inches to 22 inches, and a 40 inch high clearance for non-clogging. Standard equipment includes: spring trips; 24 inch straight rolling coulters; heavy-duty DMI frogs; 16 inch shares; 12.5 by 15 tail and front furrow wheels; 3 separate double-acting hydraulic cylinders with lines for tail wheel, front furrow wheel, and width adjusting feature; large indicator gauge to show width of cut; plus a tubular steel back-bone brace on main plow beam.

Operational features of the DMI 900 Series Hydra-Wide plow include: a pivot on the tongue section of the on-land hitch that permits the tractor to run the same distance from the furrow regardless of width of cut; a rear tail wheel that is steered when the tractor turns; a free castor front furrow wheel that will not climb out of the furrow; remote hydraulic cylinders with sequencing valves on the tail and front furrow wheels that automatically lower the front then the rear and reverse when raising the plow - all with one control valve on the tractor; a 3rd remote hydraulic cylinder to adjust width of cut; an adjustable hitch for setting plow draft; plus, the tail wheel will lessen landside drag because of the extra weight it carries. The DMI 900 Series Hydra-Wide plow with its on-land hitch is especially suited for large 4-wheel drive, articulated-steered, center-pivoted tractors; because these tractors cannot operate in the furrow and must have all wheels on land. Also, these tractors are usually equipped with extra large tires and-or four-wheel duals for more traction and less compaction. Additionally, the 900 Series on-land hitch permits owners of standard two-wheel drive tractors to keep dual wheels on both sides of the tractor - plus, the operator does not have to sit on an angle as when plowing with one wheel in the furrow. For further information contact: DMI, Inc., P.O. Box 65, Goodfield, Ill. 61742.

Farm Fans

GOSHEN, Ind. - Three new farm fans have been added to the Agstar line of livestock related products, according to Rene Cripe, sales manager for Star Agri Products. The new line includes two sizes of variable speed fans plus an

economical single speed model.

The two new Agstar variable speed fans are matched to the Agstar automatic ventilation system, but they also may be sold separately to fill specific air circulation needs. Model VS-620 has three 20-inch cast aluminum blades which are driven by a one-half horse power motor. The VS-620 may be operated from a modulated thermostat as a variable-speed fan or from a thermostat for single speed operation. Air output is up to 4,280 CFM at zero static pressure.

The new Agstar Model VS-624 is a 24-inch fan that turns at a slower speed where quieter applications are required. It may be operated from either a thermostat for

single speed operation or a modulated thermostat for variable speed operation. Air output is approximately the same as the 20-inch Model VS-620. Cripe added that both variable speed fans feature high-strength cast aluminum blades, automatic shutters, storm hoods, and enamel coated steel housings.

High Pressure Sprayer
GOSHEN, Ind. - Star Agri Products, has announced the addition of a new high-pressure sprayer to the Agstar line of livestock equipment. The new Agstar Model D-500 pressure sprayer was introduced to give farmers and ranchers a quick, effective way to handle some of their toughest cleaning problems.

The new sprayer boosts water pressure to 500 pounds per square inch at the nozzle, with a flow rate of two gallons per minute. Water sprayed at that pressure is capable of blasting away the toughest grime, Cripe explained. The sprayer is operated by a 115 volt AC motor that features thermal overload protection. The pump is equipped with a safety valve to protect the unit.

The new D-500 sprayer is simple to move and operate.

The unit is equipped with large wheels and a strong steel handle. Also included are brackets for convenient storage of the sprayer's 30-foot hose. As soon as a garden hose is hooked up and the unit is plugged into a 3-way outlet, the sprayer is ready to blast away dirt. A pistol-grip handle controls flow through the 24-inch wand which can be fitted with any of three different nozzle tips.

Longwood Gardens Announces Publication of A Man and His Garden

Longwood Gardens, Incorporated, announces that its publication, *A Man and His Garden*, written by George E. Thompson, Sr., former personal secretary to P.S. du Pont and Business Administrator of Longwood Gardens until 1972, is now available to the public in book form.

The book is a historical, yet personalized, narrative of Pierre du Pont's acquisition of Longwood Gardens in 1906 and his development and expansion of its facilities through the following years until his death in 1954.

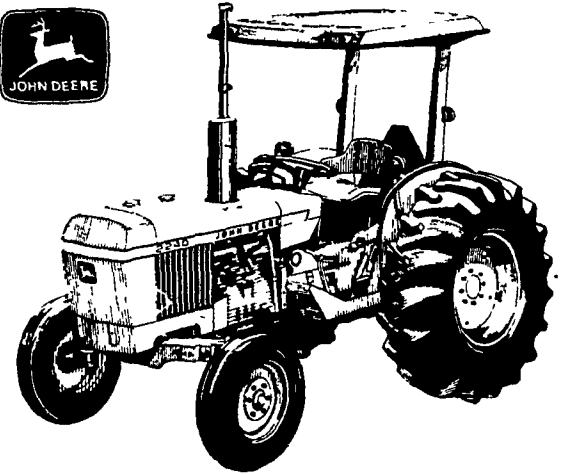
It is a simple, accurate, and interesting first-hand account of Mr. du Pont's experiences with his gardens, his employees and his neighbors at Longwood and in the local community. It contains many old, nostalgic and previously unpublished photographs of the development of Longwood.

The original text of this narrative was edited by Richard G. Taylor, former editor and publisher of the "Kennett News and Advertiser." By authorization of the Longwood Trustees, *A Man and His Garden* appeared in weekly installments in the "Kennett News and Advertiser" over a period of twenty-two weeks

in 1975 before it was published in book form.

The book can be obtained from the Information Center, Longwood Gardens, Kennett Square, Pennsylvania, 19348, for \$8.95. Longwood Gardens, Incorporated, owns all rights to the book, and proceeds from sales will go to that foundation.

New John Deere 50-hp 2240



Its ultrawide job scope leaves few idle hours

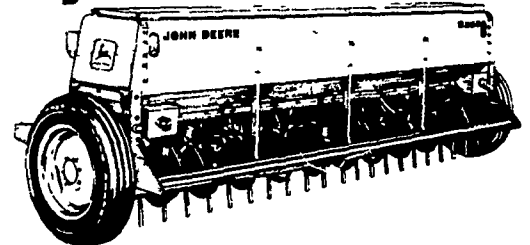
The new John Deere 2240—it's quite a tractor. It's fully prepared to serve as the sole power unit on many farms and add new vigor and versatility to most any operation.

This new John Deere 2240 is ready—without extra-cost add-ons—to take on most any hitch, drawn, or PTO-driven machine job. That's only the beginning of a huge array of 2240 can-dos. Many more base-price features expand and broaden the 2240's job scope to include most every job on your farm.

This tractor is so well suited to such a wide variety of jobs that you'll be amazed how often you favor it over other possibly larger tractors. The 2240—it'll see few idle hours and many highly productive hours.

See us today for more details on this new seldom idle John Deere 2240 Utility Tractor.

Spacing...capacity...drilling width: John Deere's got your number



We've got your number because we offer so many different combinations of 8000 Series End-Wheel Drills. With four row spacings, four drilling widths, five box sizes, and two feed mechanisms, you can easily select a drill designed and built for your needs.

Landis Bros. Inc.
Lancaster 717-393-3906

A.B.C. Groff, Inc.
New Holland 717-354-4191

Adamstown Equipment Inc.
Mohnton, RD2, PA 19540
(near Adamstown)
215-484-4391

Pikeville Equipment Inc.
Oyster Dale Road
Oley RD2, PA
215-987-6277

M. S. Yearsley & Sons
West Chester 215-696-2990

Neuhaus'es, Inc.
Glen Rock, PA
717-235-1306

Agway, Inc.
Chapman Equipment Center
Chapman, PA
215-398-2553

Stanley A. Klopp, Inc.
Bernville, PA
215-488-1510

Shotzberger's Equipment
Elm, PA
717-665-2141

I. G.'s Ag Sales
Silverdale, PA 18962
215-257-5136

Kermit K. Kistler
Lynnport, PA
215-298-3270

LET US INCREASE YOUR EFFICIENCY WITH A DESIGNED



MILKING SYSTEM



A good milking system must have

PROPER VACUUM
PROPER INFLATIONS
PROPER PULSATION

WE CAN OFFER YOU THESE PRINCIPLES IN ANY OF THE FOLLOWING EQUIPMENT:

- PROFESSIONAL INSTALLATION AND SERVICE
- PIPELINE SYSTEMS
- AUTOMATED HERRINGBONES
- AUTOMATED CAROUSELS
- AUTOMATED POLYGONS
- CROWDING GATES
- STIMULATION STALLS
- MILKERS
- AUTOMATIC DETACHERS
- VACUUM PUMPS
- BULK TANKS
- PIPELINE WASHERS
- PRE-COOLERS
- REPLACEMENT PARTS, BOU-MATIC INSTALLATIONS
- AUTOMATED SIDE OPENING STALLS



See the new style Bou-Matic Turbine VacQMer VACUUM PUMP

Ideal for Milking & Washing

Extremely quiet

- no oilers
- no wicks
- no vanes
- no belts
- no pulleys
- no bearings
- no tank filter
- no pollution of oil fumes

Just one moving part produces steady quiet pressure or vacuum by water action alone.

A Guarantee of Trouble-Free Operation

Sizes from 40CFM-300CFM

YOU MUST SEE IT TO APPRECIATE IT

CALL US FOR A DEMONSTRATION

COMPLETE PLANNING — INSTALLATION — SERVICE

SHENK'S FARM SERVICE

501 E. WOODS DRIVE, LITITZ, PA 17543

PHONE (717) 626-1151