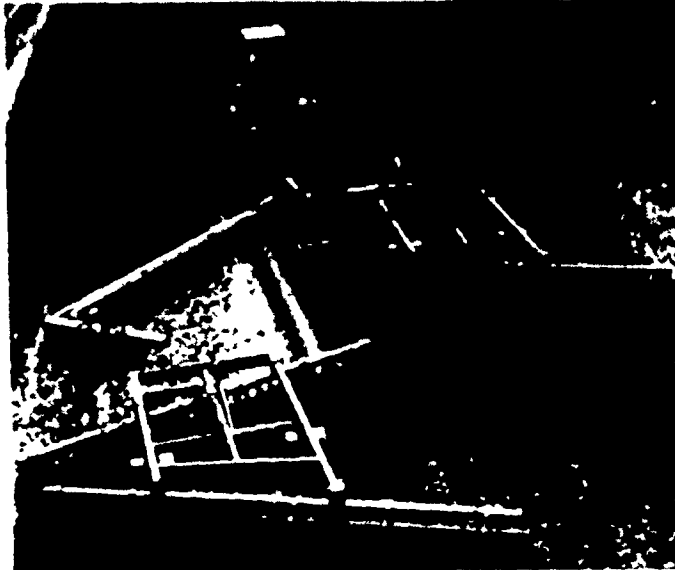


What's New . . .



Hydra-Hitch
BJ Manufacturing Co., Inc., of Dodge City, Kansas is proud to announce the addition of the Hydra-Hitch to the growing line of BJM products. Designed to pull multiple drill and tillage equipment this unit eliminates the need to buy arger implements to accommodate larger horsepower tractors. Now you can hook smaller implements together and still fold them easily for transport. Available in three different models, the BJM Hydra-Hitch allows you to change from field to road position (and back to field position) right from your tractor seat in a matter of seconds - at a touch of your hydraulic lever.

For further information contact B-J Manufacturing Co., Inc., Box 370, Dodge City, Kansas 67801. Telephone 316-227-8173.

NEW HOLSTEIN BULL BOOK AVAILABLE
A 60-page booklet titled "Holstein Reference Sires" has been published by Carnation Genetics, Hughson, Calif., the international artificial breeding company. In making the announcements, Robert Strickler, head of the dairy department, said that the directory includes 83 black and white Holstein Friesian bulls and 5 red and white Holstein Friesian bulls. A total of 46 of the sires are

USDA proven, while the balance are part of the battery in the company's young sire program. Strickler pointed out that information on all the proven sires includes two generation pedigrees, USDA sire summary report, the Genetics Breeding Guide, aAa Codes, and personal recommendations by a member of the Carnation Genetics breeding consulting staff. Included among the bulls

are Betterway Rear Admiral, with a P.D. of +1019; Lazy L Skyliner Wallie, with a P.D. of +947 and "plus" in siring of all physical traits, and Oak-Hill Ranch Boots, with a P.D. of +918. To make it easier to get answers to further questions on the bulls, the names and addresses of all local key distributors and company sales representatives are included. Strickler said that the Holstein Reference Sires Directory is available free by writing to Carnation Genetics, P.O. Box 938, Hughson, Ca. 95326, or P.O. Box 437, Watertown, Wisc. 53094.

GRAIN WAGONS
Parker Industries, Inc., Silver Lake, Indiana has announced that new literature has been published describing each model in Parker's complete line of mobile grain handling equipment. Separate catalog sheets describing each model are available free from the manufacturer. The new literature encompasses a separate full-color catalog sheet for every model now under manufacture at Parker Industries. This includes information on Models 2200, 2500, 3000, 4000 and the Model 1400 Auger, plus, Parker's new auger-unloading Grain

Buggy, fifth-wheel rear discharge Grasshopper and its complete line of wagon gear. Each catalog sheet fully describes and lists specifications for each model. Standard features and optional equipment are also described and illustrated with color photos. To obtain a set of free literature on all Parker mobile grain handling equipment, or any specific model, write Parker Industries, Inc., Silver Lake, Indiana 46982.

TRY A CLASSIFIED

"PETTER POWER PAYS"

★ WORLD LEADERS IN DIESEL ENGINE DESIGN ★

1 1/2 to 45 H.P. CONTINUOUS RATING

WITH PETTERS EXCLUSIVE WARRANTY YOUR SATISFACTION IS GUARANTEED.

LET US KNOW YOUR SERVICE PROBLEMS

HOOVER DIESEL SERVICE

Petter Diesels - Sales & Service
Ph. 215-445-6272 or 717-354-7469
RD2 New Holland, PA 17557

PUBLIC SALE
OF FARM MACHINERY
SATURDAY, MARCH 20, 1976
11:00 A.M.

Located junction of Route 222 at 6 Mile House, take Willow Creek Road near U.G.I. storage tanks.

Farmall "M" tractor, MF No. 165 gas tractor, MF No. 35 S.P. 8' combine w-h. mereel, Century weed sprayer w-pump + 12' boom, Mc. No. 40 silage blower w-40' of 8" pipe, Hamill 2 row 3 pt. hookup tractor cultivator, New Idea No. 323 1 row corn picker, 14 x 7 Ontario grain drill on rubber w-tractor hitch, 14' wagon flat, Smoker 24' elevator, No. 268 New Holland baler w-bale ejector, 2 rubber tire wagons w-16' flats + hay racks, McCormick 7' transport type disk harrow, 8' cultipacker, Cunningham hay conditioner, Brady stalk chopper, 4340 Oliver 3 bottom 14" trip pull type tractor plow, J.D. 4 base 14" trip plow - 3 pt. hookup, Mc. No. 30 manure spreader on rubber, plow sole fertilizer attachment, 1 sickle mower, Mc. 4 bar side rake - pull type, platform scale, grindstone, ground scoop, 28' ext. ladder, 30"6" rubber belt, block and tackle, 3 H.P. elec. motor, 2 wheel rubber tire hand cart, brooder stove, Terramotor hyd. barn cleaner pump, battery elec. fencer, Cyclone seeder - P.T.O., scalding trough, 2 iron kettles, 1 copper kettle, and misc. small hand farm items.

NOTE: ALL POWER EQUIPMENT IN A-1 CONDITION. Not many small items. PLEASE BE ON TIME.

CONDITIONS BY
MR. & MRS. CHARLES H. BECKER
Alfred W. Burgert, Auctioneer
Steven A. Burgert, Apprentice
Refreshments Available

If you have fat cattle or need feeders . . .

THINK NEW HOLLAND

BEEF SALES
MONDAY 2:30 P.M.
THURSDAY 11:00 A.M.

Sale Order - Fat Bulls, Steers, Stockers, Beef Cows and Veal Calves

NEW HOLLAND SALES STABLES, INC.
Phone 717-354-4341
Daily Market Report Phone 717 354 7288

Abe Diffenbach, Manager
Field Representatives - Bob Kling 717-354-5023
Luke Eherly 215-267-6608

"Pickering Springs Farm"

PUBLIC AUCTION
BARN, SILO, FEEDING EQUIPMENT,
FARM MACHINERY AND CROPS
FRIDAY, MARCH 26, 1976
At 12:30 P.M.

LOCATION: Moore's Esso Garage, Rt. 100 Eagle, turn east for 2 miles; 1/2 mile west of Rt. 401 on Byers Road, West Pikeland Twp., Chester Springs, PA.

Barn, 40' x 80' w-camel back roof, laminated rafters, 40' x 34' shed att., 40' x 40' and a 40' x 84' Lean-to w-galvanized tin roof, all to be sold and removed from premises; Ribstone 20' x 70' stave silo; Marietta 12' x 50' silo; Badger 20' silo unloader, 7 1/2 HP motor w-electric winch; Vandale 12' silo unloader, elec. winch; Badger 38' ensilage conveyor; Vandale 40' travel feeder for 80' trough; Lancaster silo distributor; 60' blower pipe; Badger & Vandale elec. waterers; 30 iron & alu. gates; 200 ton of corn & haylage ensilage; 60 ton of mixed hay.

Equipment as follows: White 2-85 category hitch, 18-4 tires, 75 hrs.; Int. 'Super C' w-loader; Oliver '1650' dsl. row crop; Gehl '4400' Hydracat drive Skid loader, 300 hrs.; New Holland '770' Harvester, PTO, 2-row corn head & pickup, 1,000 RPM w-all high moisture corn atts.; New Holland '27' PTO whirl feed blower; 3 N.H. 'M-6' forage wagons w-flotation tires; 3 N.H. 16' bale rack wagons; Int. '315' 15 1/2' transport cultimulcher; N.H. '276' PTO baler w-thrasher; N.H. '256' rake; N.H. '469' haybine; N.H. 28' elevator; N.H. '516' tandem manure spreader w-hyd. gate; Ontario 16 double-disc gram drill; 3-section harrow; 3-point blade; Int. 20' weeder; cement mixer; 10,000 gal. fuel tank, underground w-large elec. pump; 1951, Ford dump truck and miscellaneous articles found on a farm!

Inspection: Morning of sale.
Terms: Cash or approved check by Whitford Sales Company.

By the order of:
Owner

Sale conducted by:
WHITFORD SALES COMPANY
L. Robert Frame, auctioneer
Box 98, Uwchland P.O.
Eagle, PA 19480
Phone: 215-458-5060
"Chester County's FOREMOST Auction Company"

COMPLETE DISPERSAL
Having sold my farm . . .
SAT., MARCH 20, 1976
At 11:30 A.M.

On Cherry Ridge Rd. - 5 miles from Waymart or 5 miles from Honesdale or 11 miles to Hawley. Wayne Co., PA. ARROWS!

31 fresh, 10 getting ready, 8 bred back for fall. 1 Reg. Transmitter daughter, 1 Reg., Kingpin (just fresh), 2 Grade Hagan daughters, 2 grade Bootmakers, 2 grade Monitors, 2 grade Ivanhoe Princes, Service Sires such as Hagan and The R Maple bulls used. A grade West Side Seaman daughter bred to Hagan. Cows have condition, youth and are really working. Interstate charts and examined. "LR21" Lindy Liquid N.T. Tank & Semen.

MACHINERY

Allis Chalmers "190XT" tractor with all seasons cab, diesel, chains, front loader with bucket & forklift (a good one). M.F. No. 880 5 bottom plow, Auto. reset, extra points, Case 16 ft. transport harrow, N.H. No. 479 Haybine (2 yrs. old) 9 ft., N.H. Super "717" chopper 2 row and pickup heads, N.H. forage box No. 8 with roof, 3 beaters on 8 ton wagon and flotation tires, Gehl Hi-Throw blower, Lely 3 pt. fertilizer spreader, I.H. 6 row corn planter, J.D. 12 ft. harrow, Oliver drill 8 hoe, J.D. hammermill, good dump rake, 3 hydraulic cylinders, 3 fuel tanks, 16.9 x 38 tractor tire (almost new), Ford 1959 1 ton "350" farm truck. Agway silage cart, unloading jack & motor, 5 ton 10-10-10 fertilizer, 6 bu. Rye, 5 bu. corn seed, 4 portable calf stalls, Sears 12 h.p. tractor with blade mower and roof. 1 in. S.S. transfer line. 14 gallons Red Sears Best Weather Beater paint. +Brand new Butler 10 ton feed bin, never assembled & complete. +Buggy wheels & parts, many crocks, clamp top soda bottles, Horse Collars, many chairs, desk, etc., etc. to sell at 11:30. (Take about 1/2 hr.)

Terms - Cash or Approved Checks. Lunch

BOWEN & ANTOINETTE JAYNE JR., OWNERS
Jim Adriance - Auctioneer
Montrose - 717-278-1570

CUSTOM BUILT PLYWOOD FEED BINS

5% OFF REGULAR PRICE

ON ALL ORDERS RECEIVED DURING MONTH OF MARCH.

ALSO AVAILABLE: **MADE TO ORDER**

WAGON BEDS — BALE THROW RACK
WAGONS — TAPERED LOCUST POSTS & FENCE BOARDS — BARBED WIRE & WOVEN WIRE FENCING.

STOLTZFUS WOODWORK
RD Gap, PA Box 183
1 Mile North Rt. 897
From Gap