

at large commercial dairy farm

[Continued from Page 70] create something positive out of various negatives. "The Arkavalley Dairy

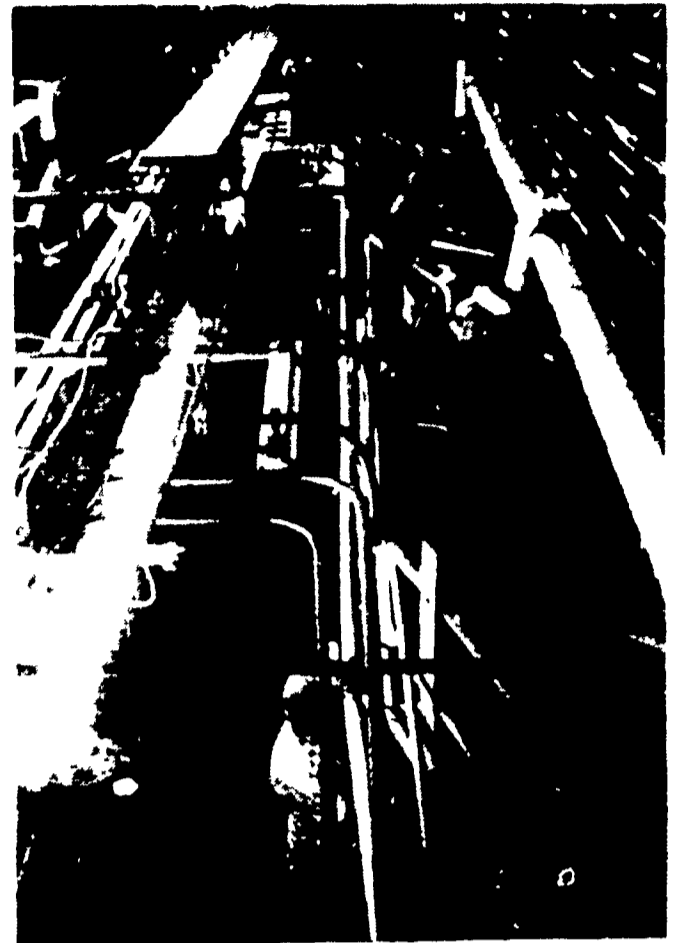
Farm was built and is operated as a management research dairy farm to enable the company and

their employees to learn management inputs necessary to successfully operate a large dairy."

visitors are informed. A dairy conference was held here earlier this week which drew close to 1,000 dairymen from all over the eastern United States — including several dozen from Lancaster Farming's prime coverage area.

The major purpose of the research farm was to find answers to common dairy farm problems such as: 1. breeding, 2. retained placentas, 3. adequate roughage, 4. cow groupings, 5. low fat tests, 6. calf raising, and 7. personnel. Workable solutions are made available to dairymen, as are any other results of management and building experiments which have been tried. Aside from some product research, such as testing new feeds prior to marketing, the main areas of study concern:

1. Buildings and equipment and their most practical type and arrangement for these facilities.
2. Breeding, cow health



Only about a third of the milking parlor is shown in this view. It has an 18-cow capacity and can handle 150 cows per hour. Milking the 1500 lactating cows takes 20 hours per day and is done in shifts. Men and women do the milking.

and mastitis problems commonly associated with large dairies and some practical measures that can be taken to reduce them.

3. Practical feeding programs and equipment needed to feed large herds.
4. Adequate pollution control measures.

Asked at one point why such a large dairy operation was chosen as the basis for experiments and research, several spokesmen answered: "Large, medium and small dairy farms have many things in common, but large dairies have some unique problems, particularly large dairies where cows are held in close confinement. Findings from a large dairy would be more widely applicable than those from a small farm."

Stressing a need for

practical research and service to commercial agriculture, the giant feeds

[Continued on Page 76]

Survey Results

A recent Food and Drug Administration survey found that shoppers were most concerned about making sure families got the nourishment they needed. Ranked almost as high was the concern for saving money on food prices. Those shoppers who know more about nutrition realized it was possible to follow a budget and still eat nutritionally. Of the shoppers polled, eight per cent said they would prefer having nutrition labeling, rather than recipes on product packages.



Cows at "Arkavalley Farm" wait in the holding area prior to walking into the automatic washing area and finally the parlor at the far end.

Approximately 1,900 head of grade Holsteins are kept at the 802-acre research farm.

XL-78



CASH IN HAND

Grab hold of one of those beautiful XL-78 ears. Notice those quality kernels. You've got hold of a top-yielding, dependable corn. You've got cash in hand. Ask Donald Meckley of Glen Rock, Penn. He produced 168.97 b p a in the DEKALB YIELDMASTER Club* "I like XL-78 because of good standability and high yield," says Donald. See your DEKALB dealer for XL-78. It means cash in your hand.

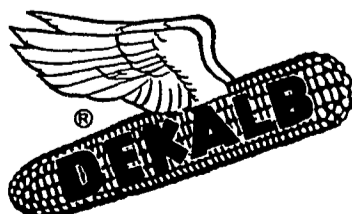
XL-54

A top yielder of excellent quality grain. Strong stalks.

XL-75

Outstanding single cross with superior stalk strength, big yields.

As a condition of sale, please note statement of limited warranty and remedy on DEKALB orders and tags.



DEPEND ON DEKALB

DEKALB is a registered brand name. Numbers designate hybrids.

*DEKALB YIELDMASTERS Club yields are mechanically harvested without cleaning from a measured acre or more and computed to No. 2 corn in the presence of impartial witnesses.

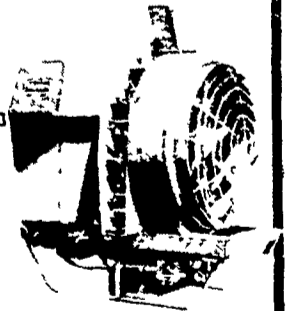
SEE THE ALL NEW

Myers

A36TMG

SUPER MITY-MIST

DU-ALL AIR SPRAYER



FEATURING:

- Rustproof 150 gallon fiberglass tank with mechanical agitation
- Tests prove Super Mity Mist ideal for mature apple trees or semi-dwarf plantings
- Popular Myers Du All Pump handles dilute or low volume applications with liquid or wettable powder chemicals
- High velocity 36" axial flow fan for good foliage penetration with air and chemicals
- Low PTO HP requirements For rated performance 50 HP tractors recommended
- Exclusive Drive Mist Nozzles for extra carrying power
- Tank fitted with propeller type agitator synthetic rustproof strainer and see thru sight gauge
- Hitch pins reversible for Category I or II receptacles

LESTER A. SINGER

RONKS, PA

PHONE 687-6712

Lancaster County's Only Dealer
Specializing in Sprayer Sales & Service