

Farm Equipment

Lime & Fertilizer Spreaders. New Willmar and boom type spreaders and a few used ones in stock. C. U. Stoltzfus Mfg. Inc. Box 296F, Morgantown, PA 19643 215-286-5146

For Sale - No. 82 New Holland Bale Thrower, #11s New Holland No. 281, 282 & 283 balers, used only 6 weeks, \$750; No. 489 New Holland haybine, \$2,000; 8 x 8 x 16 bale wagon, \$950; two-speed axle with air breaks, \$75; call Annville, 717-867-4794

154 Cub Low-Boy, Demo. Farmall Super A w-cultivators Farmall 400 Diesel Tractor Used N.H. 210 Manure Spreader.

COPE & WEAVER CO.
New Providence
784-7351

Farm Equipment

Hesston 12 ft. Sp win-drower
10 ft. Pull & 3 pt. Brillion Alfalfa Seeders
Used 10 ft. 3 pt. Disc Mulcher.
Used 12 ft. Brillion Mulcher.
Used 200 gal. Hanson Sprayer
New 16 & 18 Ft. Lamco Bale rack wagons
Used Gehl 600 Harvester w-2-row head
Int. Series 2000 Manure Loader.
Used N.H. 165 & 200 bu Spreaders
Used N.I. 135, 165, 200 bu. spreaders
Used Hesston Stakhand 30 & mover
Used N.I. 710 Combine

SCHULD BULK BINS
from 3 ton to 125 ton capacity

UMBERGER'S MILL
New Idea, Gehl, Hesston & Brillion Dealers.

RD4, Lebanon (Fontana)
Phone 717-867-5161

Dairy Equipment

For Sale - 500 gal. Dairy Kool Milk Tank \$800 Surge Alamo Thirty-Plus Vacuum pump \$450. 5 Surge Pail milkers \$30 ea. 2 strainers, 3 buckets. PH: 717-235-3167

300 gal Girton milk tank, good condition
440 gal. Esco tank, good cond.

500 gal. Girton w-4 h.p. compressor
Star 12-Can open front milk cooler, good cond.

CLARK ELECTRIC
RD1, Kinzer, PA
Phone Intercourse 768-8228

Custom Work

Dairy Equipment

For Sale - Complete 40 stall Universal pipeline milking system. Electric pulsation, 1 1/2" glass line. Contact Myron Clouse, RD2 Martinsburg, Penna. 16662. Phone 814-793-2872

Topline Vacuum Transfer Station Auto. Washer
Kesco Vacuum Transfer Station Auto. Washer
Esco Pumping Station w-1" Glass Line
Surge Vacuum Transfer Station
DeLaval No. 73 Vacuum Pump
DeLaval No. 75 Vacuum Pump
Jamesway 1 HP Vacuum Pump
Bou-matic Milker Units w-California In-fiations & Pneumatic or Elect. Pulsation
Bou-matic Pulsator Control & Stall Cocks
DeLaval 45 lb. Milkers
Surge Milkers w-Elect. Pulsation

AGWAY SUPPLY CENTER
1027 Dillerville Road
Lancaster, PA
Ph: 717-397-4761

Custom Work

Inter seeding with new JD power till seeder. Custom round baling. Will do 50 mi. of West Grove. PH: 215-869-3068 after 6 p.m.

Need a break? Custom milking done by experienced milker. Call Charvin Farm 717-665-7471

Livestock and Custom Hauling - Hay, Straw & corn. Also for sale 500 gal. milk tank. Oliver 550. 1965 House Trailer for Sale. PH: 626-6904

Custom Work

Cold Storage Insulation Fruits - Vegetables **SPRAYED ON URETHANE FOAM.** Ideal for temperature and humidity control. Continuous coating no seams - no adhesive For free estimates, call Conestoga Chemicals & Plastics, Inc. 397-372A After 5:00 p.m. Call 872-2233.

HAULING: Tobacco, Grain, Hay, Straw, and other Farm Products. Call Sue for prices and an appointment 717-284-2857

Help Wanted

Help Wanted - Aggressive young Christian couple, preferably Mennonite, to manage embryonic beef and swine operation. Prefer someone with previous farm experience and with mechanical ability. References required. Terms: Salary plus percentage leading to partnership. Phone 717-869-1070

Someone to help or even be manager of regular Harvester Building Equipment. Either to work for salary or percentage. Would be working in Ohio & Pennsylvania. Write or Call Nelson S. Miller, R. 2, Box 262, Sugar Creek, OH 44681 or 216-852-4088.

Married man or mature boys from family for dairy & general farm work. House, garage, horse stalls, salary, & benefits. Experience preferred, Ronks area. PH: 717-687-8525

Free room, board for middle age farm woman, or widow, reliable, honest, willing housework, cooking, area in Penna. Like animals, one need place to live, no objection, 1 child, send reference only since first letter. Write c-o P.O. Box 266L, Lancaster Farming, Lititz, Pa. 17543

Wanted - Married Christian couple for on dairy farm. House and privileges. References required. Phone 717-653-5155

Wanted - Full time help on large dairy farm, good house, benefits and salary. Experience required. Write Box 266N, c-o Lancaster Farming, Lititz, Pa. 17543

Experienced person for steer, hog and tobacco farming. Must be able to operate and maintain machinery. 717-872-5554

Christian married or single man wanted to work on Dairy farm & do other farm work. House included. Reference required. PH: 717-653-4477

Sales Representative for Agri-Business to work in local area. Send resume & salary requirements to P.O. Box 266Q, c-o Lancaster Farming, Lititz, Pa. 17543

Wanted - A Christian couple to help do dairy and general farm work, a 3 bedroom house trailer provided plus other benefits. Experience and references necessary. Call 215-593-5934

Married man for dairy & general farm work. Experienced & dependable. Call 215-766-8734

Reliable married person to drive truck and work around cattle, good farm house with all conveniences available. E. Gutman, Livestock Dealer, Jefferson, York Co., Pa., phone 717-229-2055 between 12 & 1, 301-578-1224 after 8 p.m.

Trucks

Trucks

1975 D 200 1/2 ton cap. d/o
1975 B 200 Manure wagon
1972 1/2 ton pickup 6 cyl auto
1972 9000 lb. Camper Special 8 Auto SE
1971 1/2 ton pickup 6 cyl stick
1975 AMC Hornet 1 1/2 ton new 14000 miles

PETTICOFFER DODGE, INC.

Route 208, West of Strasburg Center, East of Lititz, PA
PHONE 367 1808

**TRUCK SPECIAL:
\$6850**



2 BRAND NEW 1976 60-SERIES CAB & CHASSIS

★ 6 cylinder, 292 engine with 2 speed axle, 900 tires, 149" wheel base, 84" cab to axle, class 7 registration, 21,000 license.

For More Information Contact Dealer:

MENTE CHEVROLET INC.

Kutztown, PA 19530
PH: 215-683-8787

Tremendous Savings Now On
New 1975 Leftover Cars & Trucks

Business Opportunities

Partnership or Sale of a long established artificial breeding & Animal Health Products business. Very Profitable. If interested write P.O. Box 266S, Lancaster Farming, Lititz, Pa. 17543

Young Amish Farmer needs financing to start in the dairy business, up to \$35,000. Write Box 266-T, c-o Lancaster Farming, 22 E. Main St., Lititz, Pa. 17543.

For Sale - 15 ft. van type utility trailer with tandem axle and electric brakes, 3 ton capacity, \$900. or best offer. 717-397-0035

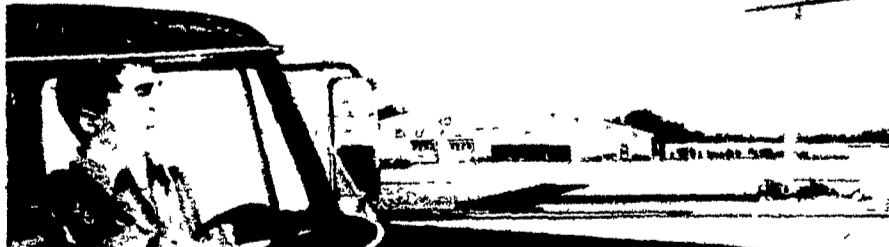
For Sale - I.H.C. CO4000 1968-250 Cummins, 10 speed Roadranger, twin screw, good all around condition. PH: bet. 7 & 8 A.M. or 6 & 7 p.m. weekdays. 215-987-6313

Business Opportunities

FARMERSVILLE EQUIPMENT, INC.

RD2, Ephrata, Pa.
717-354-4271
Store Hours:
Daily 7:30-6:00
Sat 7:30-4:30

Business Opportunities



DEALERSHIP OPPORTUNITY as big as agriculture and YOU

The American farmer has achieved a stature in the world economy which secures his prosperity better than ever

As a Case dealer supplying his production needs, you share in this unlimited opportunity. Franchises are available in New York and Pennsylvania.

As a Case tractor and implement dealer you are the power specialist, providing the essential power for greater productivity at a profit. Power specialization lets you devote all of your time and resources — sales, parts, and service — to one area. Tractors

You cover the field in 12 sizes of power from 43 to 221 H.P. with the Case-David Brown line

You may also qualify for the light construction equipment franchise, which includes our 580B, the number one back-

hoe-loader Vibromax compaction and lawn and garden franchises may also be available

Case will help guide you or your managers to sound business practices, aggressive marketing and strong advertising, and promotional support. Our Case Credit Corporation will support you with both wholesale and retail financing

Interested? Call or write—

Jim Tutterow, Sales Manager
J I Case Company
P O Box 50128
Indianapolis, Ind 46256

Or call collect 317-849-4770

There is no obligation, of course

J I Case
A Tenneco Company



For Sale

For Sale

TIRES FOR CARS, TRUCKS and TRACTORS

Tractor Overhauls
Plow Shares, All Makes
Wolf's Head Motor Oils
Also REMINGTON CHAIN SAWS

BENJ. W. CLAUSER
FARM MACHINERY SERVICE

LOCATED ON RUPPSVILLE RD.
RT. 2, BOX 682 WESCOSVILLE, PA.

PH. (215) 395-2542

