

Form Equipment

For Sale - Self-spacing concrete hog slats in 4 ft. - 4 ft. 8 in. - 6 ft and 8 ft. lengths. Valentine T. Petersheim, Box 329A R2 Millintown, Pa. 17059

M.F. 175 Diesel Tractor, good cond.
N.I. 702 Gas Uni-Tractor
213 New Idea Manure Spreader
Owatonna 95 Mixer-Mill, good condition.
ROY H. BUCH, INC.
Ephrata 717-858-2441

Large selection of Tractors - Case 1200 4 wheel drive; M.F. Super 90 with dual wheels; D19 A.C. with mounted plow; J.D., Ford, David Brown, Oliver, Leyland, Deutz, Moline, Massey Harris and Porsche Diesel, Tractors with loaders and backhoes, skid steer loaders, payloaders, crawler tractors with loaders and backhoes, roll-over plows, rotobar rakes, wheel rakes, grinder-mixers, cultimulchers, cultipackers, disk harrows, spreaders, corn shellers, roller mills, tank spreaders and harvesters.

4-row plateless corn planter, fertilizer spreaders, steel wheel wagons, haybine balers, 2 & 4 row cultivators, mowers, Oliver 5B hyd. reset plow, 1, 2, 3, 4, 5 bottom plows, grain drills, blowers, elevators, rotary scythe, landscaping equipment.

100's of tractors to choose from. Lot of equipment not listed.

CLYDE E. KEENER
1531 Manheim Pike
Lancaster, PA 17601
Intersection of Rts. 72 & 283
Phone 717-569-9861



New Scraper Blades
New Kubota Tractors
New M.F. Lawn & Garden Equip.
New M.F. Industrial Equip.

2 - Used 9 ton trailers
Used 7 ton trailer

CRAWLERS
TD 20 Doz SOLD
M.F. 300 Dozer
Case 450 Loader
M.F. 200 Loader
M.F. 300 Loader w-4nl bucket
M.F. 300 Loader

LOADERS
M.F. 20 Diesel w-PTO-3 pt. ht.
M.F. 811 Skid Steer
M.F. 33 all wheel steer
Case 530 w-high lift boom

BACKHOES
J.D. 1010 Gas
Case 580 Diesel
Case 580 Manual Shuttle
M.F. 50A (new)

SPECIAL PRICES ON
Lamco Forage Boxes w-gear
Case JT Plow
M.F. 4-row Mtd. Corn Planter.
Used IH 5 ft. rotary cutter.

LANC. EQUIPMENT CENTER, INC.
P.O. Box 1, Kinzer, PA
Phone 717-442-4186
Lancaster Customers

New Allis Chalmers DISK HARROWS and FIELD CULTIVATORS In Stock!

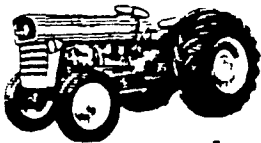
★USED EQUIPMENT★

- NI 213 Spreader
- NI 214 Spreader
- JD 620 Tractor
- JD Model A Tractor

SHARTLESVILLE FARM REPAIR SERVICE

H Daniel Wenger, Prop.
Shartlesville, Pa
Phone (215) 488-1326
If no Answer Call (215) 488-6574

Hitch up to Massey.



Our Annual PUBLIC SALE of FARM MACHINERY

will be held
Monday, March 15, 1976
At 10:00 A.M.

Additional Equipment Consigned to our Sale as advertised on Page 108.

J.D. 17 run grain drill w-band seeding attachment.

M.F. Forage Wagon
18 ft. Bale Throw Wagon
N.I. 213 Spreader w-hydraulic end gate
Weaverline feed cart
M.F. 510 Diesel Combine w-15 ft. quick-tach grain head
N.H. 467 Haybine
M.F. 50 Ind. Tractor w-loader
M.F. 175 Diesel w-Ind. Loader

M.M. WEAVER & SONS
North Groffdale Road
Leola, PA
Phone: 717-656-2321

Ford 9000D - wide front-fully equipped, 5000D - 8 speed, 4200 D, 4000 - 8 speed - PS, 3000 D - PS - LPTO, 3000-w hydraulic snow plow, 801 G-LPTO - 5 speed, 801 D-10 speed, 9N & 8N w-loaders.

Case 830, 400.
Farmall 504 - 3 pt. - PS, 404 - 3 pt. Cub w-attachments.

AC 190, D15, D14, CA, B, JD 3010, 2020 Gowide front, 420, 50.

Ontario Grain Drill, JD 2 row - Ford 2 row and 2 IH 4 row corn planters. 30 plows - 1 to 5 bottoms, 5 used 3 pt. discs. Ford 3 pt. mower. New 6 ft. rear blades - \$110.

KELLER'S FARM MACHINERY INC.
116 Richlandtown Pike
Quakertown, Penna.
18951
215-536-4046

Gehl Farm Machinery
Taylor-way & Athens
Disc Harrows
Hawk Blit Manure Spreaders
Glenco, Taylor-way & Athens Chisel plows
Zimmerman Elevators
Pequea Hay Tedders
Ford Industrial Motors
Vicon Fertilizer Spreaders, with engine mount
Century Sprayers
Springtooth Harrow
ZOOK'S FARMSTORE
Box 222 RD2
Honeybrook, PA 19344

A.C. WD Tractor, rebuilt; A.C. WD-45 Tractor, rebuilt; A.C. Model C Tractor w-hydraulics; Oliver 1850 Diesel Tractor w-wide front end w-only 2479 hrs.; Oliver 1850 Diesel Tractor w-wide front end, roll bar, canopy, radio & dual wheels; Oliver 770 Tractor w-wide front end; J.D. 2010 Diesel Tractor; Farmall 706 Tractor; Farmall C Tractor; Farmall 240 Tractor w-3-point hitch & all hyd. loader w-both buckets; M.F. 165 Diesel Tractor in excellent condition; M.F. 50 Tractor; J.D. 5-bottom semi-mounted plow; Farmall 5-bottom semi-mounted plow; J.D. 5-bottom 3-pt. hitch plow; Case 4-bottom 3-pt. hitch plow; Farmall Model 58 6-row Planter; A.C. Gleaner F Diesel Combine w-13' Grain head & 4-row Corn head, only 3 yrs. old; Oliver 535 Combine w-12' Grain head & 2-row Corn head.

C. J. WONSIDLER BROS.
ALLIS-CHALMERS SALES & SERVICE
Call (215) 536-1935 or 536-7523.

DISCS: JD KBA (1) 20 Disc, (1) 24 Disc, (1) 28 Disc, IHC 24 Disc.
PLOWS: Oliver 12", 14", 16" w-2 bot. Raydex (pull type); (1) 3 pt. hitch 2 bot. tractor plow.
GRAIN DRILL: (2) Oliver 13 Disc; (1) IHC 10 Disc.

CORN PLANTERS: (Horse Drawn) (2) JD 99 2 r w; (2) IHC 2 row. All have fertilizer attach.

MOWERS: JD Big 4 w-7 ft. bar & wide wheels, IHC No. 9 mower 7 ft. bar. N.H. 455 Trailer Mower; N.I. Trailer Mower w-PTO in rear.

RAKES: N.H. 55 & 56 roller-bar; (1) NI 4 bar side delivery w-tedder; 4 N.H. 404 Hay Crushers.

(2) NI 1 row transplanter.

IHC 1 & 2 row horse drawn cultivators.

SILO FILLERS: (3) Papec 16" finger feed; (1) Papec 16" finger feed 4 knife; (2) IHC No. 9 cutter, 4 knife; (1) Gehl cutter.

CULTIPACKERS: 7 ft. and 9 ft.

MC Rotary Scythe 7 ft.
90 IHC Haybine, like new.

Myers Combination Hay Conditioner.

N.I. 32 ft. Elevator; Smoker 24 ft. Elevator.

ENGINES: Wisc. 2 cyl., 4 cyl. w or w-out reduction gear, w or w-out electric start, w or w-out baler mount.

Jamesway & Loudon Litter carriers w-track & accessories.

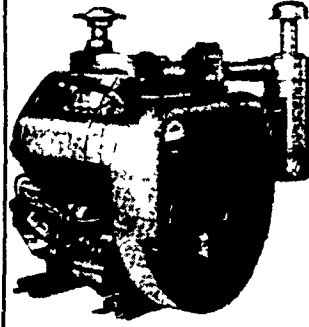
T. J. WHEARY & SONS
717-687-6553
Free delivery within Lancaster Co.

For Sale - (1) used Thomas Built double row potato harvester; 1000 bu. Clinton Oats. Call between 6-9 (only) Felix Carpenter, Pitman, Pa. 17964, Phone 648-5056

Needed - Rear End for MUSTANG 7 H.P. Garden Tractor, 32" torque drive, QPC. Contract Blue Mountain High School, James Shadle, Ag Dept. PH: 717-366-0511



WISCONSIN HEAVY-DUTY ENGINES
6 to 65 H.P.



Model VG4D
37 hp, 2400 rpm - 154 cu. in.

"SPECIAL"
Factory Surplus
25% DISCOUNT

VG4D with 4-1 Clutch-Reduction starter & alternator
V465D 65 H.P. with PTO Reduction
VH4D 30 H.P. Hand or Electric Start with - Clutch or Reduction
VH4D for Limestone Trailer
THD with Clutch - Reduction
THD 18 H.P. for Baler New & Rebuilt
S12D 12 H.P. Starter Gen. \$325.00
AENLD 9 H.P. Surplus \$225.00
B & S 10 H.P. with Clutch \$395.00
Many other models in stock New & Used
Replacement for obsolete model VP4.
Clutch Reduction will interchange.
Authorized Service Center
FISHER ENGINE SERVICE
3141 Old Phila. Pike
Bird-in-Hand, PA 17505

Form Equipment

Form Equipment

Wanted - New Holland Model 455 or 456 mower. Write Elmer Fisher, Pond Road, Ronks, Pa. 17572

No. 8 & 10 N.I. Manure Spreader on steel for sale, good condition. 106 Waird Walking plow. I will deliver. Elmer S. Kauffman, Box 87, Atglen, PA.



EAGLE MACHINERY COMPANY

Route 100, Eagle, PA

NEW EQUIPMENT IN STOCK

(2) White 5400 4-row air corn planters w-minimum til.
Glenco Soil Saver 8 ft.
Glenco 12 1/2 ft. Field Cultivator
Glenco Chisel Plow, Pull 9 Tooth
White 348 3B 18" Cushion Trip Plow
White 5B 549 Auto Trip Plow
White 244 Backhoe & Loader w-rop Save \$5,500.
White 4-25L Bobcat Loader
White 244 Fork Lift 14', 300 hrs. \$7,500.
Danuser Post Hole Digger
50 Bolens, Wheel Horse, and Ariens Riding Tractors and Mowers in Stock.

USED EQUIPMENT

Oliver 251 10'4" Disk
Oliver No. 64 13x7 Grain Drill
(2) Highway Mowers for Sato Tractors
460 9 ft. New Holland Haybine
25 Used Wheel Horse, Bolens, and Ariens Riding Tractors and Mowers in Stock.

Phone (215) 458-5326

USED FARM MACHINERY

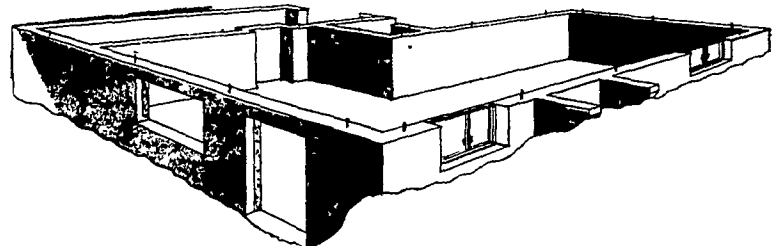
G1355 MM Dsl. Tractor 18 Spd. \$14,600.
G750 MM Dsl. Tractor 1971 \$7,800.
MF 711 Skid Steer Loader Hydro. \$5,200.
MF 260 Forage Harvester w-Pickup & Corn Heads \$5,500.
2 LAMCO Forage Wagons \$1,800.
MF 81 Haytender \$2,150.
BROY HILL 8 row sprayer \$975.
MF crop blower \$850.
DIADEN Spreader 3 point mounting \$325.
OLIVER 6 x 18" Semi Mtd. Auto. Reset Plow \$3,250.
MF Spring Harrow 12 ft. pull type \$245.
MF 33 Grain Drill 17X7 \$1,600.
MF 160 Manure Spreader \$1,100.
MF Disc. Harrow Model 520 36 Blade \$1,100.
FARMALL H Trac. & Mower John Deere \$895.
OLIVER 543 6X30" Rows No Till Plate Type Planter w-Herbicide & insecticide attach. \$2,850.
OLIVER 548 4x18" Auto. Reset Plow w-Coulter covers \$3,900.
FERGUSON 40 10 FT. Chisel Plow w-gauge wheels NEW \$1195.

TOO SEE THESE ITEMS OR FOR MORE INFORMATION CALL OR COME SEE

GUS FARM EQUIPMENT

Route 616 Box 85
Seven Valleys, PA 17360
Phone 717-428-1356

START WITH THE BEST! POURED CONCRETE WALLS



- +MANURE PIT WALLS
- +FOUNDATION WALLS
- +CURBS
- +CISTERN WALLS
- +BARN YARD WALLS
- +SLABS
- +RETAINING WALLS

CONCRETE WALLS ARE BETTER BECAUSE:

- +STRONGER ... Than Block
- +SMOOTHER ... Architectural finish
- +Fewer Cracks
- +Reinforced Steel
- +Easily Roller Painted
- +SOLID ... Dense all the way through
- +FLEXIBLE ... Made to your Design
- +More Water Tight
- +SERVICE ... Complete, Experienced and Professional
- +Lower Maintenance

Our concrete walls are formed with some of the finest aluminum forms in the business. As a result, we can offer a good solid wall at a LOW PRICE.

Balmer Bros. Concrete Work

410 MAIN STREET
AKRON, PA 17501
PHONE 859-3325
859-1343