



A 200-year old farm, surrounded by history, is a source of pride for Mr. and Mrs. Merrill Zimmerman.

deliver the hay, then load his wagon with manure for the return trip, and arrive back home late in the day. "The horses found their own way back while the driver caught up with some needed sleep," Zimmerman said.

Times and prices have changed since then. Today the Zimmerman farm has two sets of powerline towers, a sewage line, and the Pennsylvania Turnpike cutting through it. Then there are bike and snowmobile trails, and an expanding population which is spilling on to the farm land. Taxes last year approached \$4,000.

"Sliver Lake Farm" has been farmed for 200 continuous years, but its years are probably numbered. "You can't farm here anymore," Edward Zimmerman concluded.

## Ag film released

WASHINGTON - A new film aimed at agricultural and nonagricultural audiences alike and highlighting some of the continuing contributions of agricultural research, has

The experiment stations - most of them located at the land-grant university in each state - are themselves the subject of the film. The film looks at some of the past contributions of research at these stations such as new high-yielding crop varieties, insect and pest control, development of the drug dicumarol that prevents blood clotting, and machinery for crop harvesting.

recently been released. Title "Unfinished Miracles," the 28-1/2 minute color film is available on loan from the state agricultural experiment station in each state.

## W. G. BROWN AGENCY

GENERAL INSURANCE

HOME — AUTO — LIFE — HEALTH

"YOUR FARM AGENCY"

WE SPECIALIZE IN FARM HOMEOWNER'S

CORNER N. 4TH ST.

& OLD RT. 1

OXFORD, PA (215) 932-5885

## Bicentennial farm

[Continued from Page 68]

Jacob Zimmerman, a professor at the University of Heidelberg, Germany, and university authorities. John Jacob and his wife Margareta packed their things and headed for the New World. The old gentleman died in Holland, but his wife and children arrived safely in Philadelphia's German settlement in the late 17th century.

Blanche Zimmerman has done much of the research concerning the family's roots. Not too many family records were kept, but the Montgomery County Historical Society lists much of the information in its books. The original sheep skin deed signed by one of William Penn's deputies is among the Zimmermans' heirlooms.

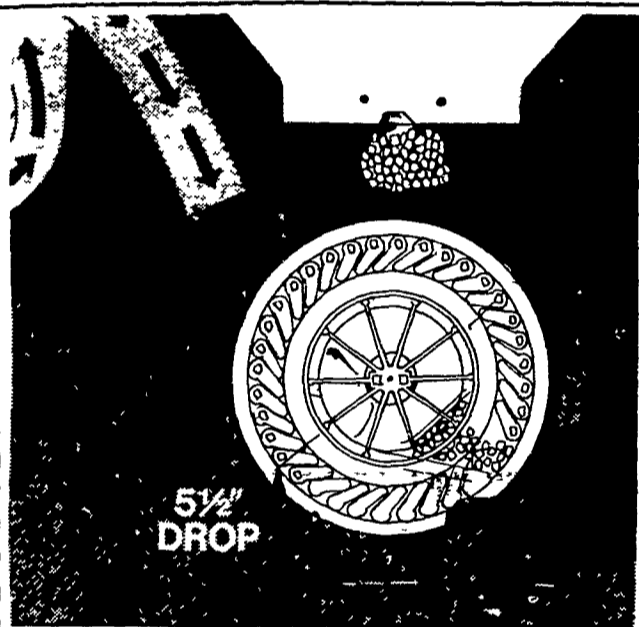
Although it's not known for sure, it's suspected that most of the farm was wooded even after settlers had pretty well established themselves. There are no accounts of hostile encounters with Indians, something which Blanche Zimmerman attributes to the generally kind attitude William Penn had towards these people.

The Zimmermans weren't able to furnish financial statistics for their farm from 200 years ago, but they do have ledger books which are nearly 100 years old. Here are a few prices from the year 1882:

Twelve quarts of cream sold for \$3.00. Fee for shoeing a horse - 25 cents. Four pounds of sugar cost 32 cents; two pounds of raisins were a quarter. Ten dozen eggs brought \$2.10 and 10 pounds of butter were sold for \$3.90. One bushel salt cost 40 cents, a pair of shoes \$1.60, two bushels of potatoes \$2.48 and 100 pounds flour \$3.50.

In 1886 the economic picture showed: One bull sold for \$45.00; one cow brought \$18.00; two calves were sold for \$5.50 and ten dozen eggs were priced at \$1.70 (June) and \$3.80 in December.

The Zimmermans tell of stories when the milk train chugged through the countryside to pick up milk at 5 a.m. Yes, the dairyman had to be done milking his cows by that time if he wanted to see his product go to market, Edward affirmed. He also related how loads of hay from his farm were taken into Philadelphia twice a week to supply the livery stables. The farmer would leave early in the morning,



## A real down-to-earth Air Planter

The Allis-Chalmers Air Planter has a seed drop of just 5 1/2" closer than any other on the market today. What does this do for you? Well, the shorter the drop, the less chance there is for each seed to miss its target. Which also means more uniform spacing. And there's more Choice of unit drive or common drive. Winkin Blinkin Monitoring Systems. Electric motors that give you two-for-one savings. Ask your Allis-Chalmers dealer for more down-to-earth facts.



The Rising Power in Farming

**ALLIS-CHALMERS**

C. J. Wonsidler Bros.

RD1, Quakertown, PA 18951  
Phone 215-536-1935  
215-536-7523

Roy H. Buch, Inc.

Ephrata, RD2  
717-859-2441

BHM Farm Equipment, Inc.

Annville, RD1, PA  
717-867-2211

Grumelli Farm Service

Quarryville, PA  
717-786-7318

A. J. Noss & Son

RD2, Oley, PA  
215-987-6257

L. H. Brubaker

Lancaster, PA  
717-397-5179

Shartlesville Farm Equipment

Shartlesville, PA  
215-488-1326  
H. Daniel Wenger, Prop.

## WEED and FEED WITH LIQUID NITROGEN and HERBICIDES

The most efficient and sure way to fertilize and control weeds in your corn fields.

Less trips over the fields.

Modern equipment to serve you.



**RICHARD R. FORRY**

*Spraying*

2020 Horseshoe Rd., Phone 717-397-0035  
Lancaster, PA  
— SPECIALIST IN YOUR FIELD —

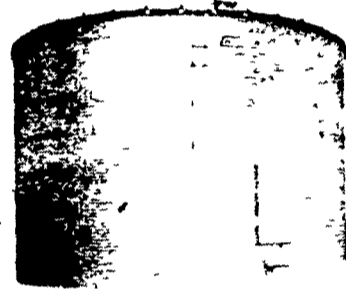
## CHICAGO GRAIN BINS

STORAGE & DRYING BINS

DIAMETERS 15' TO 90'

CAPACITIES 1800 to 305,000 bu.

CHICAGO DRYING SYSTEMS



EARLY ORDER DISCOUNTS NOW AVAILABLE

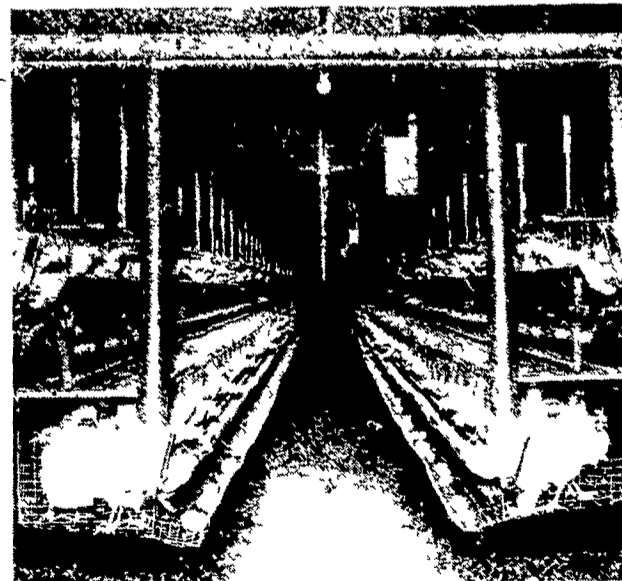
**HERSHEY EQUIPMENT CO., INC.**  
The Systems Company

215 Diller Ave.  
New Holland, Pa.

PHONE (717) 354-4576

**CHORE-TIME**

## ONE OF THE MOST EFFICIENT CAGE FEEDING SYSTEMS



Feed is your biggest out-of-pocket cost. Cut it just 1 percent - without production - and that's money in your pocket.

Our new cage feeder helps you do just that. Because it uses a new feeding principal poultrymen have proved will work.

It's our experience birds prefer feed that hasn't been picked over. They eat more, convert feed better and are more productive. So we designed our new cage feeding system to deliver fresh, fine-ground feed - or crumbles to every bird in a closed tube.

**CHORE-TIME**

Made to work. Built to last.

WE SELL, SERVICE and INSTALL

**E. M. HERR EQUIPMENT, INC.**

R.D. 1, Willow Street 717-464-3321