

Palm oil imports jeopardizing soybean industry; prices may rise

WASHINGTON - The National Soybean Processors Association (NSPA) recently called on the U.S. government to end its support of international subsidies for foreign palm oil production, to negotiate a mandatory import quota on palm oil, and to establish a duty on its importation.

Lowell K. Rasmussen, president of the Association, said that the 100 percent

increase in U.S. palm oil imports in 1975 was spurred in large part by subsidized palm oil production funded through loans from international agencies such as the World Bank. The U.S. government continues to endorse loan applications from Southeast Asian governments for expansion of palm oil output, and is known to provide most of the

loan money used by the World Bank.

In announcing the NSPA position, Rasmussen noted that accelerating palm oil imports have reduced consumption of American vegetable oils, and have precipitated substantial losses in U.S. farm sales of soybeans. In an analytical paper also released today, entitled "The Problem of Palm Oil," the Association explained that the price-undercutting impact of subsidized palm oil on demand for soybean oil will have the effect of increasing the price of soybean meal, a leading high-protein animal feed. That, in turn, will mean American consumers will face increased prices for meat, poultry and dairy products.

Rasmussen said: "There is bitter irony in the U.S. Government supporting foreign palm oil producers with the money of American taxpayers, who, because of that, will have to pay in-

creased prices for food products at home."

The Association emphasized the damage of subsidized palm oil imports on the American farmer, recalling that the U.S. Department of Agriculture has estimated that sales of 43 million bushels of soybeans to domestic edible oil users were lost in 1975 as a direct result of increased palm oil imports.

NSPA pointed out that the U.S. is the only major economy in the world that imposes no duties or other restrictions on imported palm oil. Rasmussen concluded: "Other Western governments have moved to counterweigh the artificial advantages possessed by palm oil, in order to place their own domestic vegetable oils and related products on an equal and fair basis in trade. The U.S. must do the same."

It's an Ag-fact

It's an ag-fact. The task of feeding and clothing the U.S. population requires at least 30 times more land than the amount needed for all the housing in cities, towns and suburbs throughout the nation.

Students oppose strikes

The Student Advisory Board, the representative of the students of Pennsylvania, has become alarmed at the rapid increase of educational strikes. In the opinion of this board there are a few questions which have been overlooked or just blatantly neglected:

(1) Is the student's inalienable right to a quality education being violated by educational strikes?

(2) Have the teachers abused the right to strike granted them in Act 195?

(3) Do school boards use prolonged strikes as a strictly political move?

(4) Do teachers use educational demands in their proposals as a ploy to play on the sympathy of the public and is the bottom line in

educational strikes really money?

The Student Advisory Board would like to see a statewide reassessment of strike policy with these and other student oriented questions in mind.

The students of the state of Pennsylvania demand and expect a quality education; an education that exists because of students, not in spite of them.

Solar System

Planets in the solar system follow elliptical orbits around the sun, with those of Neptune and Pluto overlapping. Each planet travels faster when close to the sun. That's why the length of days on earth vary slightly during the year.

WHITE WASHING with DAIRY WHITE

- DRIES WHITE
- DOES NOT RUB OFF EASILY
- NO WET FLOORS
- IS COMPATIBLE WITH DISINFECTANT AND FLY SPRAYS
- WASHES OFF WINDOWS & PIPELINES EASILY.

Also Barn Cleaning Service Available With Compressed Air

To have your barn cleaned with air it will clean off dust, cob webs & lot of the old lime. This will keep your barn looking cleaner & whiter longer. We white washed 600 barns last year, so if your barn needs white washing for better service have it done early.

MAYNARD L. BEITZEL

Witmer, PA 17585 717-392-7227
If no answer call Willard Beitzel 717-733-6357

We will take on work within 100 mile radius of Lancaster.

Barn spraying our business, not a sideline.

Spraying Since 1961

AGRICONOMY SPECIALS

Pigs Chickens Veal or Feeder Calves



30 x 96 x 6 or 8

With one Fiberglass-Aluminum overhead door (8' x 7')

\$5760

Delivered

60 x 96 x 14

Choice of: 20, 22, or 24 x 14 double slide door

\$10650

Delivered

60 x 144 x 16

Choice of: 20, 22, or 24 x 16 double slide door

\$16560

Delivered

40 x 96 x 12

Choice of: 16, 18, or 20 x 12 double slide door

\$7680

Delivered

50 x 96 x 14

Choice of: 20, 22, or 24 x 14 double slide door

\$9600

Delivered

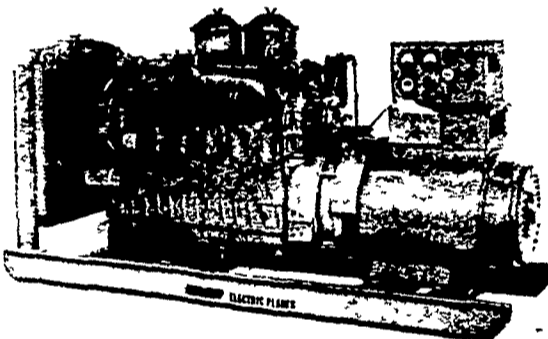
GUTSHALL'S SILO REPAIR

R.D.1, Womelsdorf, Pa. 19567
Phone 717-933-4616

Electric Generating Systems

Built to Your Specifications
Manual or Automatic

L. P. Gas - Diesel - Gasoline -



Sales - Service

Martin Electric Plants

Isaac W. Martin, Owner
Pleasant Valley Rd., RD2
Ephrata, PA (717) 733-7968



Don't Be Left Out

We Still Have Spaces Available at the 22nd Annual

Home & Garden Show

March 16-20 at the Guemsey Barn

If you have a service or product for the Lancaster consumer, this show is for you! Increase your sales. Order a space NOW. Cost is \$115 to \$165. Featured Guests Doug Dennison & Rick Volk.

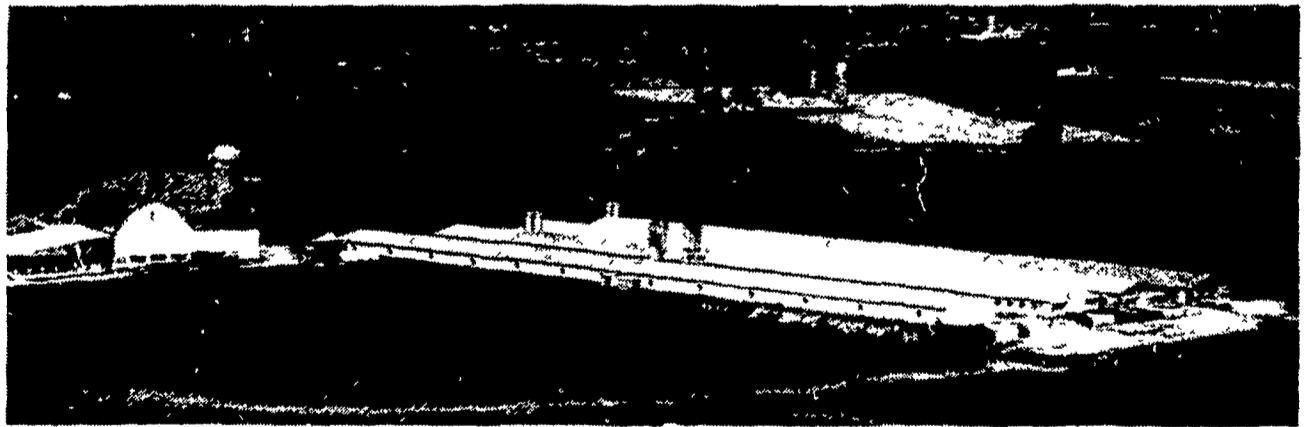
Phone Lee West at 393-3368

Sponsored by

Lancaster Jaycees

30 West Orange St., Lancaster 17604

LP GAS



SERVING FARMERS . . .

"WE MAKE IT OUR BUSINESS"

Wherever you need heat, you'll find LP-gas ready to serve you. It's ideal for heating farm buildings, brooding, water heating, incinerators, as well as for regular home use. You'll find LP-gas is both economical and practical. Let us show you the advantages . . . there's no obligation whatsoever.

CALL (717) 665-3588



MYER'S METERED GAS SERVICE, INC.

MANHEIM, PA 17545

P.O. BOX 71

