

Lancaster DHIA Report

(Continued from Page 80)

George R. Baltozer	23	GrH	4-2	305	18,711	3.7	698
Charles Tindall Jr.	Beets	GrH	3-11	305	17,825	3.9	698
John M. Stoltzfus Jr.	Liz	GrH	7-4	299	20,710	3.4	697
Mervin Sauder	Camo	RH	4-5	304	17,339	4.0	697
J. Henry Stoltzfus	18	GrH	4-4	305	21,564	3.2	696
	47	RH	6-8	305	18,281	4.0	657

Miriam S. Aungst	Lily	RH	11-5	305	17,813	3.9	696
	Katty	RH	3-6	305	16,970	3.9	658
Ammon E. Reliff	Holly	RH	5-11	276	18,010	3.9	695
Joseph C. Wivell	Sally	GrH	5-3	301	20,261	3.4	693
Elmer S. Stoltzfus	Lad	GrH	8-8	305	19,290	3.6	693
William P. Arrowsmith	Holly	RJ	10-2	301	13,440	5.2	693
John L. Landis	Annie 41	RH	6-4	305	25,845	2.7	690
	2	GrH	5-5	305	19,479	3.4	660
Marvin L. Weaver	Star	RH	3-6	305	21,775	3.2	690
Warren F. Bollinger	48	RH	7-4	305	20,508	3.4	689
Loren L. Zimmermann	Lucia	RH	6-7	305	15,279	4.5	689
H. Landis Weaver	Crystal	RH	9-5	305	20,256	3.4	688
Lester J. Wiker	Rocket	RH	5-3	305	18,211	3.8	688
Albert H. Mellinger	Wanda	RH	5-7	305	16,476	4.2	687
	Gladys	GrH	5-6	305	15,839	4.3	685
	Della	RH	6-7	305	17,348	3.9	681
David K. Stoltzfus	Lee	RH	5-0	305	19,855	3.5	686
Russel L. Kline	Ingra	RH	5-7	305	19,069	3.6	686
	Kingpin	RH	5-8	297	15,289	4.5	686

(Continued on Page 82)

FACTS FOR DAIRYMEN

by
N. Alan Bair
Associate
County
Agricultural
Agent



For most farmers, manure management has come a long way from the pitchfork-wheelbarrow-spreader daily routine. We have made questionable progress from an economic and environmental standpoint, but we have certainly multiplied the alternatives and investment!

You can afford to "take care of" the manure your animals produce. Properly handled, manure is a very valuable product of your livestock operation. The N, P and K value alone is worth about \$110 per year per cow for trace elements and organic matter.

To most dairymen, most of the manure system is already planned and in operation. You have made the decisions about what gutter cleaner, scraper, gutter design, floor and consistency (semi-solid, slurry or liquid) manure you are going to handle. Since storage seems to be a necessity in an environmentally and managerially sound system, the remaining decision is what type of storage. Storage is generally the most costly part of the system.

Manure storage could mean several things: a walled stacking area, an underground covered pit, an

aboveground silo type structure or an earthen bank pond-type structure. All types can be successfully managed - each with their own advantages.

To assure public safety and to minimize risks to the environment, all manure storages must meet certain design requirements. Before investing in a manure storage, be sure the structure meets these conditions:

- Structurally Sound - Design and construction must be such that the impoundment will be able to withstand stress imposed when storage is full.

- Impervious - Construction materials must be of such quality that a reasonable level of impermeability can be achieved. This can be achieved in a manure storage structure by using concrete, steel, asphalt, plastic or fine textured soil.

- Protection From Unauthorized Acts By Third Parties - Due to creation of an "attractive nuisance" as defined by the courts with regards to owner liability with farm ponds, fencing or some other means to decrease possibility of entrance into the storage by unauthorized persons is required. This would include drain valves protection on above ground storages.

- Adequate Freeboard - All impoundments must be managed in such a way as to maintain a minimum of a 2-ft. freeboard from a normal full level. This freeboard is for the protection of the owner as well as the environment in the event of a hard downpour.

Before making the final decision on which manure storage to use on your farm, in addition to the above points also consider the volume required, method of removal, equipment investment, and potential expansion. A wise decision will include looking at all of the alternatives and getting some professional advice.

Easter Egg

The first Easter egg roll was held April 2, 1877, at the Capitol grounds in Washington, D.C., during the administration of President Rutherford Hayes. President Franklin Roosevelt discontinued the custom in 1942, but President Eisenhower reinstated egg-rolling in 1953.

COMPLETE FARM PAINTING



We Use Quality PAINT AND IT DOES STAY ON!

AERIAL LADDER EQUIPMENT

- * Modern and Efficient Method
- * Reasonable Prices
- * Spray-On and Brush-In Method
- * Sandblasting if Necessary

FOR FREE ESTIMATES WRITE:

ESH SPRAY PAINTING

(Daniel S. Esh)
(C. Ralph Miller)
SPRAY-ON AND BRUSH-IN PAINTER
BOX 350A

RONKS PA 17572

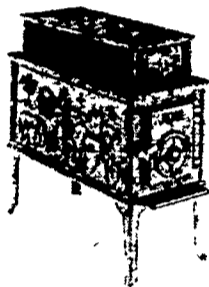


WHY PAY HIGH HEAT BILLS?

Economical round-the-clock heating with one of Jotul's cast iron woodburning stoves!



"THE COMBI-FIRE" The Free Standing Fireplace That Converts To A Stove!



Jotul No. 118 is a big, dependable woodburning stove with high heating capacity and a really attractive appearance. Can be fired with 24" logs

- Choice of models
- Practical and efficient
- Needs wood only twice a day
- Lasts a lifetime
- Simple draft and temp. control

Showroom at

STILLWATER POND

Follow the Signs - Off Rt. 501 between Brickerville and Schaeferstown Daily 12 til dusk (closed Wed.) Ph. 717-949-3002

HOG PRODUCERS!

Get Top Price for Your Hogs at New Holland



Sold in sorted lots the auction way. See them weighed and sold and pick up your check

SALE EVERY MONDAY 9:00 A.M.

NEW HOLLAND SALES STABLES, INC.

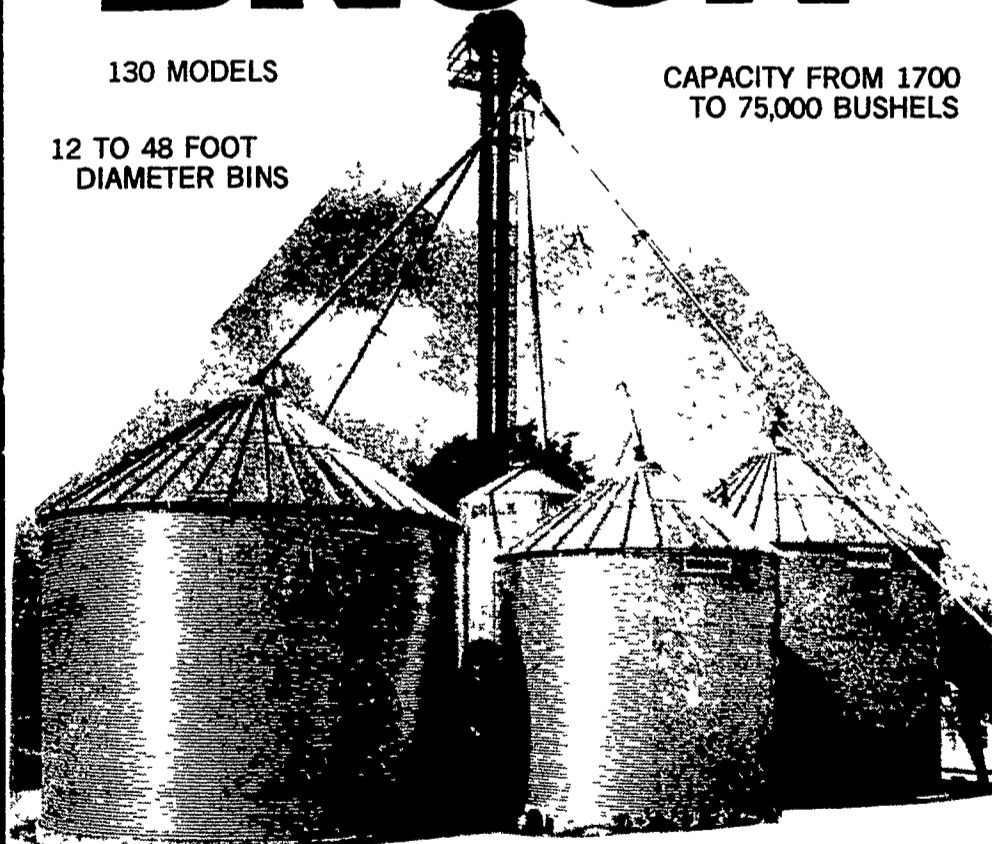
Phone 717-354-4341
Daily Market Report Phone 717-354-7288
Abe Diefenbach, Manager

BROCK GRAIN BINS

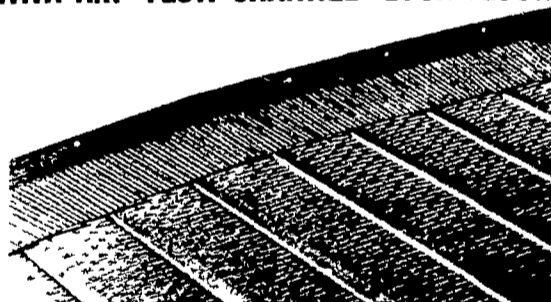
130 MODELS

12 TO 48 FOOT DIAMETER BINS

CAPACITY FROM 1700 TO 75,000 BUSHEL



20% MORE DRYING EFFICIENCY WITH AIR-FLOW CHANNEL-LOCK FLOORS



CRIMPED FLASHING

The galvanized steel flashing is crimped for strength and gives the sweep wheel of the bin unloader more gripping power. The flashing is perforated for maximum air flow. Standard type with slits will also be furnished.



CHANNEL-LOCK FLOORS

Channel type support gives more strength because sections fit securely together with a tight fit. Assembly is simple and easy. Floor sections are made of roll forming quality steel for strength, and are quality galvanized to help eliminate corrosion.

SPECIAL SALE ON BINS, AUGERS, AND FLOORS

CALL US FIRST ASK ABOUT OUR CASH AND CARRY PRICES

WE SELL, SERVICE AND INSTALL



E. M. HERR EQUIPMENT, INC.

R.D.1, Willow Street

717-464-3321