

Hog Markets

Lancaster Market

Monday, Feb. 23
HOGS: Barrows and gilts uneven, weights under 240 lb. 50-1.00 lower with weights over 240 lb. 1.00 higher.
BARROWS AND GILTS: Few US 1 210-230 lb. 51.00-51.50; US 1-3 200-250 lb. 50.00-50.50; Few US 2-3 250-275 lb. 49.50-50.00.

Lebanon Valley Auction

February 24, 1976
HOGS 381. Barrows & Gilts 50 cents to \$1 lower. US No. 1-3 195-230 lbs. 50.00-50.75, No. 2-3 185-245 lbs. 49.35-50.10, No. 2-4 200-270 lbs. 45.10-49.10, few No. 1-3 100-175 lbs. 45.00-47.50. US No. 1-3 300-610 lbs. sows 37.00-40.00. Boars 35.25-38.50.
FEEDER PIGS 6. Few US No. 1-3 35-50 lbs. feeder pigs 36.00-50.50 per head.

Lancaster Auction

Wednesday, Feb. 25
HOGS: Barrows and gilts 1.00-1.50 lower.
BARROWS AND GILTS: US 1-2 200-240 lb. 49.35-49.60; US 2-3 200-240 lb. 48.50-49.10, 240-265 lb. 48.00-48.50.

St. Louis Auction

HOGS: 4000.
Barrows and gilts opened slow, later moderately active; steady to strong, instances 25 higher.
Near 200 Head US 1-2 210-235 lb. 49.25; US 1-3 200-240 lb. 48.50-49.00; US 2-3 230-250 lb. 47.50-48.50, 250-270 lb. 47.00-48.00; US 2-4 260-300 lb. 45.50-47.00.

Peoria Auction

HOGS: 3500.
Barrows and gilts fairly active, mostly 50 lower.
US 1-2 200-230 lb. 48.50-49.00; US 1-3 200-240 lb. 48.00-48.50.

Indianapolis Auction

HOGS: 1500.
Barrows and gilts moderately active, mostly steady.
US 1-3 200-240 lb. 48.75-49.25; US 1-2 200-230 lb. 49.25-49.50; US 2-3 240-260 lb. 48.25-49.00; Few Scattered Lots US 2-4 260-280 lb. 47.00-48.50.

Vintage

Sat., Feb. 21
HOGS: 1040; barrows and gilts mostly steady to 1.00 lower. US 1-2 195-235 lbs. 51.50-51.60; US 2-3 190-250 lbs. 48.50-49.75; US 1-3 195-240 lbs. 50.51; US 2-4 260-325 lbs. 42.75-47.
SOWS: 40-43 and boars 30-37.

New Holland Auction

Feb. 25, 1976
HOGS: 1885 Barrows and gilts 50 cents to 1.75 lower. US 1-2 200-240 lbs. 50.75-51.75; US 2-3 200-230 lbs. 49.50-50.25; 1-3 200-250 lbs. 50.25-50.75; 1-3 160-190 lbs. 39-40.25; sows 38-44 and boars 35-47.50.

Delmarva Poultry

Broiler-Fryer Market
Wednesday, Feb. 25
Movement fair at best. Slaughter schedules increased with all plants working. Today's LTL asking prices lower on both plant & US Grade A. Advance inquiry active, however confirmed sales to limited to report prices. Live supplies adequate at generally desirable wts. undertone fully steady to firm.

Current broiler-fryer negotiated prices for immediate includes mistly multiple-drop.
Shipments to New York City from Delmarva.
Range: US Grade 40-42; Plant Grade 39-41; Premium X 43-48; Premium X 42-46. Wtd Age: US Grade 41.07; Plant Grade 40.03; Premium X 46.62; Premium X 45.73.
X - includes special services, selected competitive brands, etc.

Lancaster Feeder Cattle

Friday, Feb. 20
Feeder Cattle
Today 103
Last Friday 182
TREND: Insufficient volume for a market test. Few lots mixed Good and Choice feeder steers 635-930 lb. 34.75-37.10; one lot Good 980-lb. 33.75.

SLAUGHTER ANIMALS



SALE
BULLS - HEIFERS
STEERS - COWS
WEEKLY - Mon. & Wed.
12 Noon

FEEDER



PIG SALES
FEB. 3-17

LANCASTER STOCK YARDS INC.

Phone (717) 394-2611

Futures Trading

(Closing Bids as of Friday, Feb. 27)

	Chicago Cattle	Chicago Hogs	New York Maine New Contract Potatoes	Chicago Fresh Eggs
March			7.86	51.45
April	38.20	44.30	9.10	48.95
May			11.65	45.15
June	42.45	45.20		
July		45.70		
August	43.40	43.50		

Trend — Cattle are Lower, Hogs are Mixed, Potatoes are Higher, and Eggs are Lower.
Markets Provided by Commodity Department
Reynolds Securities, Inc.

Chicago Grain Futures

(Closing Bids as of Friday, Feb. 27)

	Corn	Wheat	Soybeans	Soybean Meal
February				
March	2.68%	3.70%	4.76%	132.50
April				
May	2.77%	3.86	4.86	135.70
July	2.79%	3.90	4.93%	138.40
Sept.		3.96		141.00

Trend — Corn is Mixed, Wheat is Lower, Soybeans are Lower, Soybean Meal is Stronger.
Markets Provided by Commodity Department
Reynolds Securities, Inc.

U. S. Inspected Livestock Slaughter

Estimated Daily Livestock Slaughter Under Federal Inspection

	CATTLE	HOGS	SHEEP
Week to Date	554,000	1,013,000	103,000
Same Period Last Week	535,000	921,000	100,000
Same Period Last Year	528,000	1,086,000	111,000

TRY A CLASSIFIED

J. M. HOOBER INC.

For Over 80 Years
A Company You Can Trust
& Have Faith In

FAT CATTLE AUCTION

EVERY MON. & WED.
At 11:00 A.M.

STOCKER CATTLE SALE

EVERY FRIDAY
12:00 Noon

Private Sale &
Customer Order Buying
At The time

With Spring & Easter just around the corner it's time to send in your lambs & goats. We have the buyers & we need your stock.

NEXT FEEDER PIG SALE MARCH 2, 1976

You can save yourself 25c per head by tagging at home. We supply free State tags at our office.

LANCASTER STOCKYARDS

PLEASE CALL US SOON
Phone (717) 397-6191,
569-2084, 626-5659.

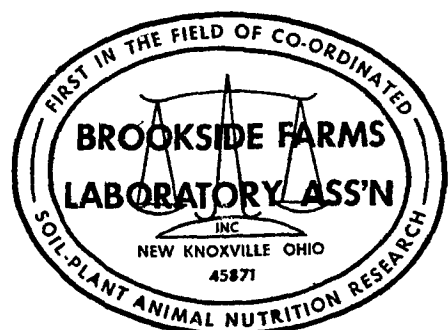
PROGRESSIVE FARMERS WANT PROFESSIONAL CONSULTATION

1. Is pH a false indicator of calcium levels in your soils?
2. Is sulphur holding back the yield, protein content and digestibility of your crops?
3. Is excessive magnesium what makes your land so wet and late?

If your present soil tests don't answer these questions, you will profit by our technical help. SOIL TESTS ARE DIFFERENT! Our complete soil analysis will help you balance soil fertility, which means more efficient cropping and feeding - less bought feed and fertilizer - more yield and profit.

WE SELL NO PRODUCTS — ONLY RECOMMENDATIONS

There is a reason why progressive farmers with sharp pencils hire us year after year for soil analyses and recommendations. We save them dollars. Balance makes crops to be proud of. Winter is the time to talk it over with:



National Reputation - Local Service

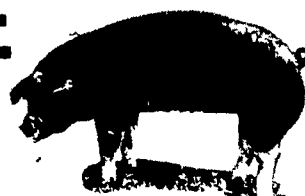
STUART HARNISH
Pottstown, PA
(215) 469-6396

JOHN CAMPBELL
Atglen, PA
(215) 593-5529

GARY McGEE
Spring Run, PA
(717) 349-2340



NEXT FEEDER PIG SALE TUESDAY, MARCH 2 1 P.M.



Consign all your feeder pigs to Walter M. Dunlap & Sons where they will be handled by a capable and experienced staff.

WALTER M. DUNLAP & SONS

LANCASTER STOCK YARDS

Consignors can get state tags at our office, thereby saving 25c marketing expense.

For Further Information, Call 717-397-5136