

Watson-Bolinger appointed at bank

The Board of Directors of Farmers First Bank, Lititz, has elected Jack S. Watson as Chairman of the Board and Robert S. Bolinger as President and Director effective February 2, 1976. As President, Mr. Bolinger

will be the chief administrative officer of the bank and will have supervision of the operations of the bank.

Watson, who joined the staff of Farmers First Bank in August, 1961 as Assistant

to the President, became Vice President in 1962, Director in 1964, Executive Vice President in 1969, and President in 1971. During his tenure as President, Farmers First Bank grew from \$48 Million to almost \$158 Million.

Watson's professional activities include having served as President of the Lancaster County Bankers Association; President of the Central Pennsylvania Chapter, Bank Administration Institute; and Chairman of the Earning Assets Committee, Pennsylvania Bankers Association. Within the community Watson has served as Director of the Community Chest, President of the United Way of Lancaster County and as President of the Board of Trustees, Lititz Moravian Congregation. He is currently serving as Director of Lititz Im-

provement, Inc., Lititz Mutual Insurance Company, Penn Charter Mutual Insurance Company, and Farmers AgCredit Corp.

Bolinger comes to Farmers First Bank after 14 years of banking experience with Irving Trust Company, New York. He began his banking career in the Audit Department and was later assigned to the Wall Street Division where as Assistant Secretary he worked with companies engaged in manufacturing, exporting and shipping. Promoted to Assistant Vice President in 1967, he was later transferred in 1970 to the Loan Administration Division. In 1971 Bolinger was assigned to serve as Regional Credit Officer and was subsequently promoted to Vice President. In 1972 he opened a new office in the McGraw-Hill Building at Rockefeller Center and since 1974 has served as Vice President and Manager of Irving Trust Company's office in the Sperry Rand Building in Rockefeller Center.

Bolinger is a native of Newport, Pennsylvania, a small, rural community located north of Harrisburg, where his father is chief executive officer of the local bank. He is a graduate of Dartmouth College with a BA degree in economics and later received his MBA from Amos Tuck School of Business Administration, Dartmouth College. Upon graduation, Bolinger served

Beef session slated

The Garden Spot Young Farmers are sponsoring an educational meeting for beef producers on THE USE OF IMPLANTS AND FEED ADDITIVES at their Beef Management meeting on February 10, at 7:45 P.M. in the agriculture classroom of the Garden Spot High School, New Holland.

The purpose of the meeting is to study what materials and equipment is available to increase feed efficiency and rate of gain in fattening cattle and how to properly use them. Sharing in the program will be Mr. James L. Andrick from ELANCO, the company who developed RUMENSIN, a newly released feed additive that is being widely acclaimed in research trials. A short film will be shown at the beginning of the meeting. Also on the program will be a beef producer from the Millersville area who participated in an implanting study in cooperation with the Penn Manor Young Farmer class. Results of that experience will be discussed. Highlights from the presentation by

three years in the U.S. Navy aboard the USS Canberra. He was discharged as a LTjg and subsequently advanced to Lieutenant Commander while serving with Reserve Submarine Division 3-51. He is married to the former Reba Fleisher and they have three sons.

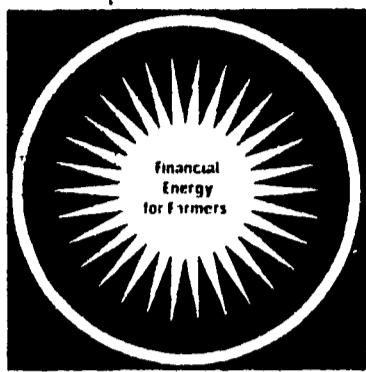
Lester Burdette at the Cattle Feeder's meeting at the Farm and Home Center last month will also be analyzed. This meeting is open to any beef producer in the area. Refreshments will be served.

Ontelaunee Grange meets

A meeting of the Ontelaunee Grange was recently held with the program being a hobby night. Presentations were made by Harry Althouse, Debbie Althouse, Barbara Lindsay, Dorothy Reeser, Donald Latshaw, Helen Latshaw, Ruth and Robin Mease and Donnie Latshaw.

Selected to be the refreshment committee for the months of February and March were Mr. and Mrs. Fred Etchberger, Mr. and Mrs. Irvin Kauffman and Mrs. and Mrs. Ronald Merkel.

Men's night will be held at the Grange on Feb. 10 with Herbert Heck, Marvin Heck and Leroy Heck in charge. Members are asked to make valentines and bring them along. A card party will be held on Feb. 21 at 8:00 p.m.

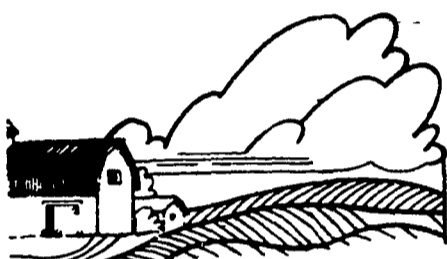


FARMERS AgCREDIT
CORP.

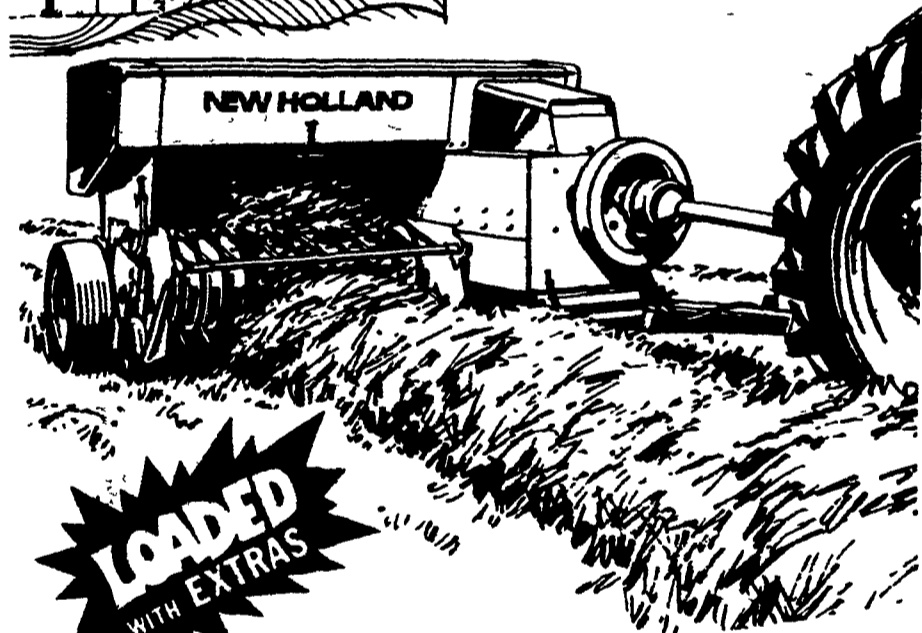
9 East Main Street, Lititz, PA 1717/626-4721

SPERRY NEW HOLLAND

THE RELIABLE ONE



The most popular
baler for the
family farm!



**Model 276 offers extra strength
and increased capacity!**

Model 276 - the 14" x 18" baler with extra-rugged quality to handle tough crops. It's designed to work hard and give years of dependable service!

We'll be happy to demonstrate the "276" baler in a hay crop of your choice. Call us!

Sperry New Holland gives you a choice of
three 14" x 18" balers. One's just right for you.

Ask about Free Finance on Hay Equipment until June 1, 1976. Forage Equipment until Sept. 1, 1976.

L. H. Brubaker
350 Strasburg Pike
Lancaster
397-5179

C. E. Wiley & Son, Inc.
101 S. Lime St
Quarryville
786-2895

I. G. Ag Sales
Silverdale, PA 18962
215-257-5136

Stanley A. Klopp, Inc.
Bernville, Pa.
215-488-1500
215-488-1510

**Shollenberger
Farm Supplies**
4th & Pine Sts.
Hamburg, Pa
215-562-2005

A.B.C. Groff, Inc.
110 S Railroad Ave
New Holland
354-4191

Roy A. Brubaker
700 Woodcrest Ave
Lititz, Pa.
626-7766

Albert J. Noss
RD2 Oley, Pa.
215-987-6257

Kermit K. Kistler
Lynnport, PA
215-298-3270



**PERFORMANCE
SPEAKS LOUDER**

THAN WORDS

DIPLOMAT —
Proven on thousands of
dairy farms the world
over.
200 to 1500 gallon sizes

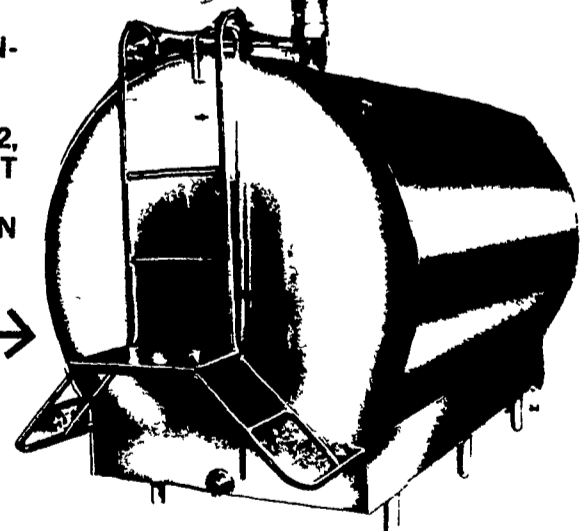
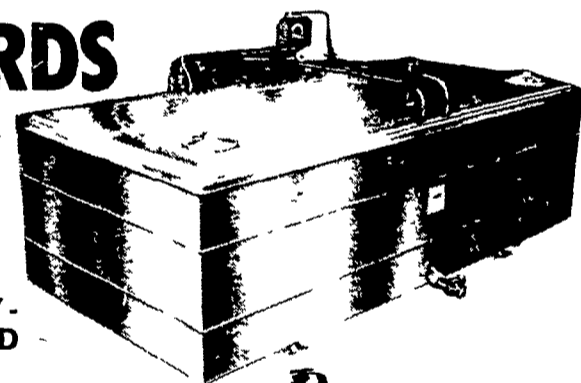
— PATENTED, FULLY-
FLOODED GIRTON COLD
PLATE

— STAINLESS STEEL CON-
STRUCTION

— LOW PRESSURE FREON 12,
THE SAFE REFRIGERANT

— URETHANE (FOAMED IN
PLACE) INSULATION

AMBASSADOR —
The ultimate tank for
the large, quality
conscious dairy farmer
500 to 3000 gallon
sizes.



IN STOCK

Lister Diesel LT - LR - SR - HR - VA
Deutz Diesel F 2L 912 Heavy duty

STIHL CHAIN SAWS

Gas & Kerosene water heaters. Your milk cooling equipment Dealer for 13 years.

Contact Byler Before you buy

COMPLETE SALES — SERVICE

BYLER'S DIESEL & REFRIG. SHOP

STAR ROUTE 655 BELLEVILLE, PA 17004



PENNSYLVANIA
MOTOR OIL

DISTRIBUTOR

LISTER & DEUTZ



S.S. GIRTON MILK COOLERS • P.T.O. OR DIESEL DRIVE ALTERNATORS
AUTOMATIC DIESEL ENGINE OR ELECTRIC OPERATION EQUIPMENT