

Hog Markets

Lancaster Market

Monday, Feb. 2
 HOGS: Barrows and gilts 1.00-1.50 lower.
BARROWS AND GILTS:
 US 1 210-235 lb. 51.00-51.25;
 US 1-2 200-240 lb. 50.35-50.80;
 US 2-3 200-240 lb. 50.00-50.35,
 240-265 lb. 48.50-50.00.

Vintage Auction

Wed. Feb. 4
 Barrows and Gilts steady to 50 cents lower. US 1-2 51.50-52.00 with few 52.35; US 1-3 200-250 lbs. 15-52; US 1-3 160-190 lbs. 40.00-50.50; sows 1-3 300-600 lbs. 38.00-41.75 and one boar at 34.00.

Peoria Auction

HOGS: 3000.
 Barrows and gilts fairly active, opening 50 higher.
 US 1-2 200-230 lb. 50.50-51.00; US 1-3 200-240 lb. 50.00-50.50.

Lancaster Auction

Wednesday, Feb. 4
 HOGS: Barrows and gilts 50-1.00 higher.
BARROWS AND GILTS:
 US 1 210-240 lb. 51.50-52.00;
 US 1-3 200-240 lb. 50.85-51.35;
 US 2-3 240-260 lb. 50.00-50.75.

St. Louis Auction

HOGS: 4500.
 Barrows and gilts moderately active; weights under 240 lb. steady to 50 higher, weights over 240 lb. not fully established.
 US 1-2 200-230 lb. 51.00-51.25; around 200 head 51.50;
 US 1-3 200-240 lb. 50.50-51.25, mostly 50.75-51.00.

Indianapolis

HOGS: 2000.
 Barrows and gilts fairly active, 25-50 higher.
 US 1-2 200-235 lb. 50.75-51.00; US 1-3 200-240 lb. 50.50-50.75; 2 Lots US 2-4 265-275 lb. 48.00-49.50.

Vintage

Sat. Jan. 31
 Barrows and gilts - most 1.50-2.00 lower - 621.
 US 1-2 200-235 lbs. 51.50-51.85, lot 52.50; 2-4 260-300 lbs. 45.00-49.50; 2-3 200-275 lbs. 49.00-50.75; 1-3 200-255 lbs. 50.50-51.50; 180-170 lbs. 45.80-48.50.
 Sows 1-3 420-540 lbs. 38.00-41.75.
 Boars 37.00-37.25.

New Holland Auction

Monday, Feb. 2
 HOGS: 1223.
 Retail - 52-54; wholesale 50-52; heavyweight 48-50; lightweight 47-50; sows 38-44 and boars 34-44.

New Holland Dairy

Wednesday, Feb. 4
 Reported receipts of 130 cows, 44 heifers and no bulls. Market stronger than last week.
 Load of Pa. cows 825-1050 and springers 750-825; load of Pa. cows fresh 500-850.
 Locally consigned cows 350-660, bred heifers 300-410 and open heifers 70-280. Herd dispersal in all stages of production 280-810.

Lancaster Feeder Pigs

Tuesday, Feb. 3
 Feeder Pigs
 Today 1310
 Two Weeks Ago 2224
 TREND: Compared to two weeks ago feeder pigs uneven, US 1-2 35-55 lb. 20.00 lower, 55-65 lb. 8.00-15.00 lower; US 2-3 30-50 lb. 10.00-20.00 lower, 50-75 lb. 5.00-10.00 lower.
 US 1-2 36-50 lb. 83.00-89.00, 150 Head 42-46 lb. 103.00-104.00.
 US 2 50-65 lb. 85.00-88.00, One Lot 62 lb. 89.00.
 US 2-3 38-62 lb. 76.00-87.00, 11 Head 27 lb. 93.00, 70-106 lb. 72.00-76.00.
 US 3 30-75 lb. 72.00-84.00, 34 Head 30-45 lb. 64.00-86.00.

New Holland Horse

Monday, Feb. 2
 Reported receipts of 227 head of horses and ponies. Local work horses 435-500; riding horses 140-265; lightweight killers 19-22; heavyweight killers 27-29; mares 15-30; colts 5-20; geldings 15-30 and larger ponies 40-90.

Local Grain

Friday, Feb. 6
 These prices are made up of the average prices quoted by a number of participating area feed and grain concerns. It should be noted, however, that not every dealer or broker handles each commodity. All prices are per bushel except ear corn and soybean meal which are per ton.
 The average prices quoted Friday, Feb. 6 are as follows:

	Bid+	Offered+
Ear Corn	62.00	72.00
Shelled Corn	2.61	2.81
Barley	1.92½	2.12½
Oats		
Local	1.58½	1.80
Milo	2.00	
Feed Wheat	1.98	2.07½
Millers		
Wheat	3.06	3.27
Soybeans	4.41	
Soybean Meal		175.00

+Bid is the price the dealer will buy from the farmer delivered to the mill. Offered is the price the dealer will sell for at his mill.

TRY A CLASSIFIED

Futures Trading

(Closing bids as of Friday, February 6)

	Chicago Cattle	Chicago Hogs	New York Maine Potatoes	Chicago Fresh Eggs
February	37.80	47.75		56.80
March			10.40	55.30
April	38.50	42.45	12.70	49.40
May			16.05	45.50
June	42.35	44.00		
July		44.90		
August	43.50	43.15		

Trend — Cattle are Higher, Hogs are Higher, Potatoes are Higher, and Eggs are Higher.

Markets Provided by Commodity Department, Reynolds Securities, Inc.

Chicago Grain Futures

(Closing bids as of Friday, February 6)

	Corn	Wheat	Soybeans	Soybean Meal
February	2.66¼			
March		3.51	4.78	135.50
April				
May	2.72	3.56	4.85¼	138.90
June				
July	2.75¼	3.60	4.92	141.00
August			4.95	141.70
September	2.71½	3.66	4.99	142.00

Trend — Corn is Lower, Wheat is Lower, Soybeans are Higher, and Soybean Meal is Higher.

Markets Provided by Commodity Department, Reynolds Securities, Inc.

U. S. Inspected Livestock Slaughter

Estimated Daily Livestock Slaughter Under Federal Inspection

	CATTLE	HOGS	SHEEP
Week to Date	595,000	922,000	98,000
Same Period Last Week	569,000	960,000	105,000
Same Period Last Year	515,000	1,117,000	123,000

Baltimore USDA

Feb. 2, 1976
 Cattle 400
 Steers firm to 50 cents higher; heifers absent.
 STEERS: Choice yield grade 2-4 950-1150 lbs. 39.50-41.50; few good and choice 875-1000 lbs. 36.75-37.75; good lower; US 1-3 39-40.
 HOGS: 660 barrows and gilts steady to 25 cents lower.
 US 1-3 200-240 lbs. 49.75-50.00;
 US 2-3 230-250 lbs. 49.25-49.75;
 US 2-4 250-280 lbs. 48.25-49.25;
 sows steady to 50 cents lower; US 1-3 39-40.

PROGRESSIVE FARMERS WANT PROFESSIONAL CONSULTATION



1. Is pH a false indicator of calcium levels in your soils?
2. Is sulphur holding back the yield, protein content and adjustability of your crops?
3. Is excessive magnesium what makes your land so wet and late?

If your present soil tests don't answer these questions, you will profit by our technical help. SOIL TESTS ARE DIFFERENT! Our complete soil analysis will help you balance soil fertility, which means more efficient cropping and feeding - less bought feed and fertilizer - more yield and profit.

WE SELL NO PRODUCTS — ONLY RECOMMENDATIONS

There is a reason why progressive farmers with sharp pencils hire us year after year for soil analyses and recommendations. We save them dollars. Balance makes crops to be proud of. Winter is the time to talk it over with:



National Reputation - Local Service

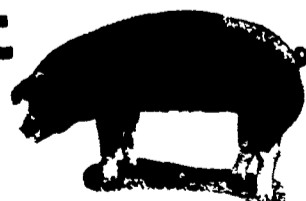
STUART HARNISH
 Pottstown, PA
 (215) 469-6396

JOHN CAMPBELL
 Atglen, PA
 (215) 593-5529

GARY McGEE
 Spring Run, PA
 (717) 349-2340



NEXT FEEDER PIG SALE TUESDAY, FEBRUARY 17 1 P.M.



Consign all your feeder pigs to Walter M. Dunlap & Sons where they will be handled by a capable and experienced staff.

WALTER M. DUNLAP & SONS

LANCASTER STOCK YARDS

Consignors can get state tags at our office, thereby saving 25c marketing expense.

For Further Information, Call 717-397-5136

J. M. HOOBER INC.

We are a company you can trust for straight, no nonsense dealings in all your cattle & hog business. Remember your business trust is our valued trust at J. M. Hooper Inc.

FEEDER CATTLE AUCTION EVERY FRIDAY 12:00 NOON

FEEDER PIG AUCTION EVERY OTHER TUESDAY

NEXT FEEDER PIG SALE FEBRUARY 14, 1976

You can save yourself 25c per head by tagging at home. We supply free State tags at our office.

LANCASTER STOCKYARDS

PLEASE CALL US SOON
 Phone (717) 397-6191.