

Livestock market and auction news

Omaha Cattle

January 29
Weekly 51
Cattle

Compared previous week's close —

Slaughter steers 2.00-2.50 lower through midweek with Choice and Prime predominantly yield grade 4 often sharing full downturn although late supplies insufficient to reflect improved carcass trade. Heifers 1.50-2.00 lower. Cows 1.00-1.50 higher and bulls firm to 1.00 higher.

Four day receipts 13,100 as compared 15,900 previous week and 22,000 a year ago. Steers approximately 37 pct. of week's total and heifers 32 pct, fairly liberal percentage Choice included although many cattle still carried at least a moderate amount of mud. Fed cattle trade again under severe downward pressure forepart of week in reaction to continued sluggish conditions surrounding wholesale carcass trade. Fresh downturns pushed carcass prices some 14.00-16.00 below early December 1975 and left live prices at the lowest point since March 1975. After initial session, however, seller resistance stiffened as prices fell near the "break even" point or below and late marketings were reduced to little more than 50 percent of normal. Buyers again selective for yield grade with some interests avoiding as much as possible consignments carrying a substantial percentage of yield grade 4.

STEERS: Two loads Choice and Prime 1175-1234 lbs. yield grade 3-4 39.25-39.50 early. At midweek, three loads Choice and Prime 1095-1269 lbs. yield grade 3-4 38.50-38.75. Choice 975-1250 lbs. yield grade 2-4 relatively clean closed 37.50-38.50, some mostly Choice muddy 37.00-37.25. Mixed Good and Choice 950-1225 lbs. 36.25-37.50. Good 34.50-36.50. Standard and low-Good 33.00-34.50.

Average of LS-214, detailed quotations, for Choice 900-1100 lb. steers this week 38.12; Choice 1100-1300 lbs. 38.25.

HEIFERS: Couple small consignments Choice and Prime 38.00 early, few loads same grade 975-1050 lbs. yield grade 3-4 37.00. Choice 850-1050 lbs. yield grade 2-4 closed 36.00-37.00, many

East Coast Carlot Meats

Wednesday, Jan. 28

Compared to Tuesday's close: Choice steer beef and good heifer beef steady to 1.00 higher. Good steer beef steady to 50 lower. No sales cow beef or lamb carcass reported. Fresh pork trade slow to fair demand. Loins weak to 1.00 lower, instances 2.00 lower. Picnics steady to 1.00 higher; Boston butts, spareribs and hams steady; bellies unestablished.

Steer Beef

Choice YG 3 6-900's lmt'd. 62.50-63.00 steady, YG 4 6-900's 59.00-60.00 50-1.00 higher; Good YG 3 6-800's lmt'd. 59.00-59.50 steady - 50 lower.

Heifer Beef

Choice YG 3 5-700's no sales; Good YG 3 5-700's 58.00 steady - 1.00 higher.

No Sales

Cow Beef

Choice Primal Beef

Cuts - Yld Gr 3&4

Fores 135-210's 53.00-53.50 50-1.00 lower; Armchucks 80-130's 56.00, lmt'd. 58.00.

Good Primal Beef

Cuts - Yld Gr 3&4

Steer hinds 120-190's 72.00; Fores 135-210's 53.00-53.50; Armchucks 80-130's 54.00.

No sales of domestic boneless beef - trimmings.

Fresh Pork Cuts

Loins (Reg.) 8-14's 98.00-99.00, lmt'd. 100.00 weak, 14-17's 96.00-97.00, lmt'd. 98.00 weak - 1.00 lower, 17-20's 88.00-90.00, most 88.00 weak, inst. 2.00 lwr; Picnics (Reg.) 4-8's 59.00-61.00 steady - 1.00 higher, 8's & up 58.00-59.00 steady; Boston Butts 4-8's 82.00-84.00 steady; Spareribs 1½-3's 98.00-99.00 steady, 3-5's 80.00-82.00 steady; Hams (Skd.) 14-17's 84.00-85.00 steady, 17-20's 82.00-83.00 steady.

No sales seedless bellies.

carrying at least a moderate amount of mud. Mixed Good and Choice 750-1000 lbs. 34.00-36.00. Good 30.00-34.00. Small lots Standard and Good 27.00-29.00.

COWS: Utility and Commercial 23.00-26.00, few high-Utility and Commercial 26.50-27.00. Canner and cutter 18.00-23.00, mixed cutter and low-Utility 23.25-23.50. Shelly canner 16.00-17.50.

BULLS: Yield grade 1&2 1400-1800 lbs. 23.50-29.00, individual yield grade 1 30.00-31.00.

Carlisle

Carlisle, PA
January 27, 1976

CATTLE 189. Compared with last Tuesday's market, slaughter cows strong to \$2 higher. Few Good slaughter steers 32.60-37.00, Standard 29.60-32.75, few Utility 26.75-29.75. One Choice slaughter heifer at 35.75, few Good 29.50-32.35, few Utility & Standard 25.25-28.50. Utility & High Dressing Cutter slaughter cows 25.60-28.10, one at 30.00, Commercial 24.00-27.50, Cutters 24.00-26.50, Canners 22.00-24.75, Shells down to 20.85. Few Yield Grade No. 1 900-1600 lbs. slaughter bulls 25.50-31.75.

CALVES 151. Vealers \$3 to \$9 higher. Few Choice vealers 70.00-72.50, Good 53.00-65.00, Standard 42.00-55.00, Utility 110-125 lbs. 38.50-44.50, 90-110 lbs. 34.00-38.50, 70-85 lbs. 24.00-34.00.

HOGS 238. Barrows & Gilts 25 cents to 50 cents lower. Lot US No. 1-2 210 lbs. barrows & gilts 51.60, No. 1-3 200-235 lbs. 50.00-51.25, No. 2-3 200-245 lbs. 49.35-50.35, US No. 1-3 370-550 lbs. sows 39.50-43.50, few No. 2-3 350-520 lbs. 35.00-41.00. Two Boars 32.00 and 33.75, one stock boar at 45.00.

FEEDER PIGS 129. US No. 1-3 20-35 lbs. feeder pigs 28.00-32.00 per head, No. 1-3 35-50 lbs. 35.00-39.00, No. 1-3 75-110 lbs. 46.00-49.00 per head.

SHEEP 11. One Choice 90

lbs. woolled slaughter lamb at 49.00, one Choice 55 lbs. new crop lamb at 59.00, one Good 90 lbs. woolled slaughter lamb at 40.00. Few Slaughter Ewes 11.50-20.50.

Ag-safety Tip

Members of farm and ranch families are the most susceptible to agricultural accidents, analysis of farm accident statistics by Sperry New Holland reveals. Some 89 percent of all farm and ranch accidents happen to family members, while eight percent to employees and three percent to guests and visitors.

Olde Homey Hints

To restore faded colors, the spots were rubbed with hartshorn and placed in the sun to dry.

J. M. HOOBER INC.

We are a company you can trust for straight, no nonsense dealings in all your cattle & hog business. Remember your business trust is our valued trust at J. M. Hooper Inc.

**FEEDER CATTLE AUCTION
EVERY FRIDAY 12:00 NOON**

**FEEDER PIG AUCTION
EVERY OTHER TUESDAY**

**NEXT FEEDER PIG SALE
FEBRUARY 3, 1976**

You can save yourself 25c per head by tagging at home. We supply free State tags at our office.

LANCASTER STOCKYARDS

PLEASE CALL US SOON
Phone (717) 397-6191,
569-2084, 626-5659.

IM-PRUV-ALL FARMER MEETING

at

LANCASTER COUNTY FARM DINER

Located on Rt. 230 between Mt. Joy & Elizabethtown.

TUESDAY, FEB. 10, 1976

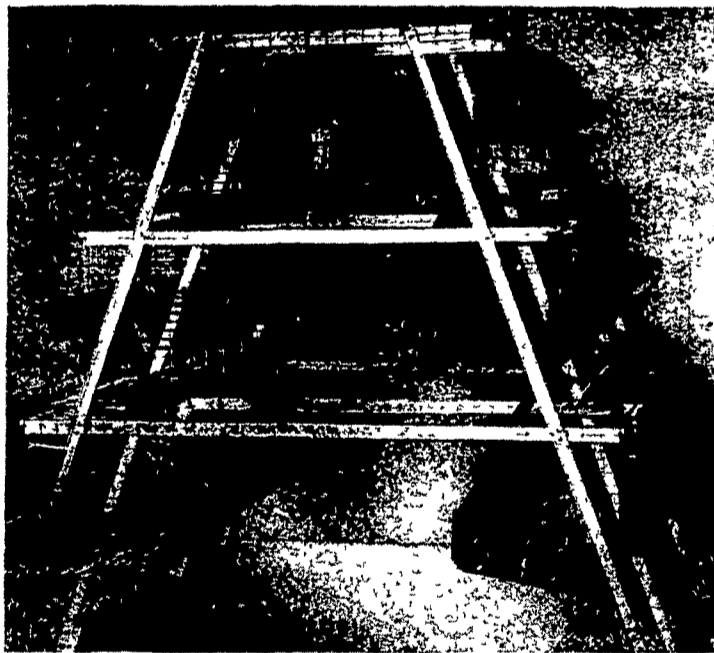
Starting at 9:30 A.M.

Free Smorgasbord lunch served at 12 Noon for those attending meeting.

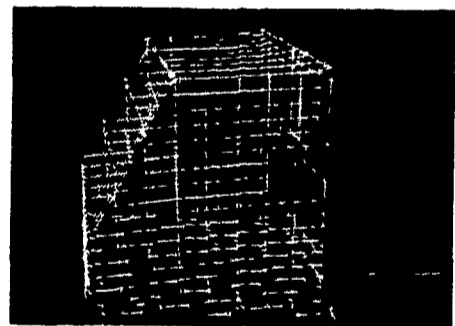
For Reservations Call One
Of The Following Numbers:

Robert Kreider
Mountville Feed Service
Ray Weiler

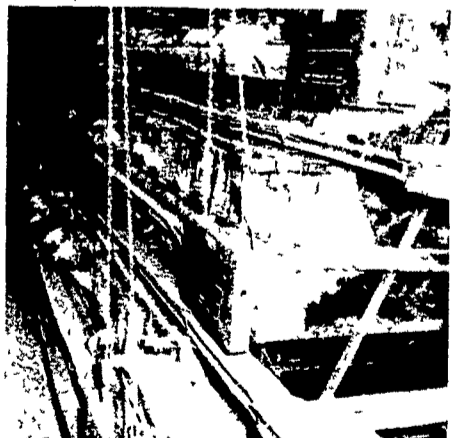
569-6042
285-5422
733-4302



NORTHCO SLANT BACK CAGES



SLANT BACK. This unique cage design eliminates dropping board scrapers and the work that comes with them. Vinyl shields deflect manure into the pit.



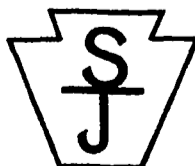
HIGH DENSITY. Increase bird population and cut building costs with Northco High Density/Slant Back Systems. A 36 ft wide house can easily handle four rows of triple deck 16 inch deep cages.

Northco High Density/Slant Back Systems are the functional way to make more from your investment. More profit. From more eggs. Produced by more birds. Only one thing comes up less . . . your labor.

Northco roof exhaust ventilation helps your system produce more. Fresh, clean air moves continuously through the house.

Find out more about Northco High Density Systems. Available with exclusive core-type auger feeding and patented automatic egg gathering.

Write or call for more information



**Farm Systems
Company**

A. R. WOOD MANUFACTURING COMPANY

BOX 218, LUVERNE, MINNESOTA 56158



Jim Thomas
Phone (215) 445-4725
AFTER 3 P.M.

BEEFALO HYBRID CATTLE

BEEFALO — IT'S GREAT

- Rapid gains on grass and roughage
- 55-65 lb. Births - up to 1100 lb. yearling
- Test data show 62 percent carcass dress out
- We stock and distribute Pureblood Beefalo Semen and Half-Blood Beefalo heifers and bulls.
- Visit our farm and see our animals.

NOW TAKING ORDERS FOR ¼ BULLS & HEIFERS.

BEEFALO N & J

4270 Quakerbridge Road
Princeton, NJ 08540
609-896-0336

Member World Beefalo Association