

# “Northwestern Adventure” featured at travelogue

The Lac's Rotary club will present the fourth program of the "Travel and Adventure Series in the Warwick High School Auditorium on Saturday, Feb. 7.

### Show Time

Dennis Cooper narrating the program "Northwestern Adventure" will appear at 3 and 8 p.m. as previously announced.

But there will be an additional show at 10 a.m. because of the popularity of the speaker.

Dennis Cooper was born in Spokane, Washington. Almost before he could walk, retreated from the city to the lumber camps of his father, the late Senator George R. Cooper. Dennis loved the woods and mountains and his father had to almost drag him off to college where he studied engineering. It looked for awhile like Dennis would abandon his woods career for one in engineering, but he yielded to the call of "the great outdoors" and returned to the mountains of Western Montana, where he and his brother, Don Cooper, ran a logging and sawmill operation for several years.

Always interested in photography, Dennis finally decided to photograph his trees rather than saw them. He traded his chain saw for a camera and his logs for film, and, together with brother Don, entered the fascinating world of Travelogue Photography.

After three years of filming this travelogue, the Cooper Brothers invite everyone aboard for a fun and fact-filled trip through some of the most spectacular natural beauty in North America. Your "cruise ship" is a shaky little steam boat that huffs and puffs it's uncertain way through a wilderness filled with wild animals, fabulous fishing and white water rivers.

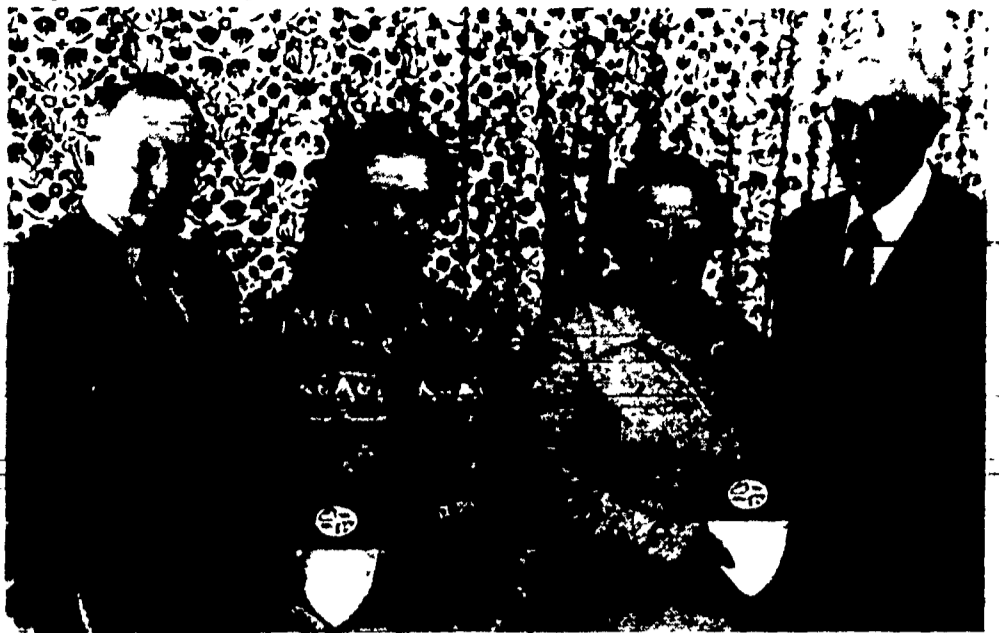
With the home-made



Dennis Cooper steamboat, the trip starts in the high Cascades visiting the "Switzerland" of the United States. The prominent peaks with all their grandeur point to the skies. Dennis takes us to Mt. Ranier, Mt. Baker, Mt. Adams, Mt. St. Helen and Mt. Hood. Everyone knows about Seattle, but Dennis in his own way, shows us 're Arboretum, Old Town, Pikes, Market, and the "World's Fair" space needle. By ferry, the trip crosses Lake Washington and the Puget Sound to Olympic National Park with its own range of mountains

and the Rain Forests of Olympic Peninsula, the greatest in the world. On to Tacoma and then Olympia with its Capitol buildings. Portland, Oregon has its well known International Rose Gardens. We see them in spring. The old steam boat takes us down the Columbia River Gorge and the Bonneville Dam.

Leaving these two beautiful states, journey goes over to Idaho where Dennis shows us how he and Don built their steamboat. With this boat we travel Idaho's wilderness rivers and see the last log drive on the Clearwater River with 50 million feet of logs en route to the mill. Here wildlife abounds with black bear, grizzly bear, moose, white tail deer, beaver and big horn sheep. One of the canyons not often visited is Hells Canyon on the Snake River plus the Sawtooth Mountain Range and the Idaho side of the Teton Mountains. One of the spectacular scenes in Idaho is Coeur d' Alene and its lake. In the old stramboot they steam up the shadowy St. Joe River, the highest navigable river in North America. Nearby are the hydroelectric dams and an electrified Rocky Mountain Railroad.



Inter-State Milk Producers recently honored, left to right, Robert Jackson and his mother Mrs. Edgar Jackson,

and Mr. and Mrs. Robert McSparran for 25-year memberships.

# NEW! SOW LIMITED

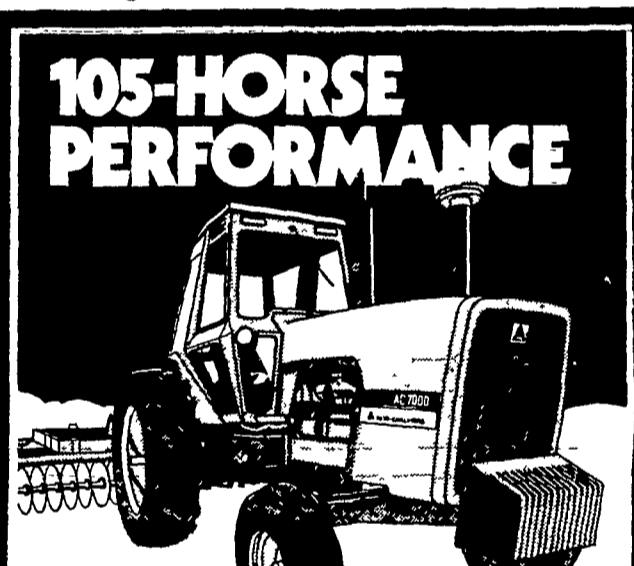


## Lets your sows know when they've had enough



If your sows and gilts had their way, they'd consume too much feed at the early stages of gestation. That isn't good for them, or their baby pigs. So, hogmen try to limit consumption by daily feeding of bulk rations or by feeding every other day. Now, thanks to Master Mix® Research, there's a better way to feed gestating sows and gilts. New Sow Limited from Master Mix. Sow Limited is a "self-limiting" feed that lets your sows and gilts eat as much as they want, yet they can still keep in top condition. This new formula is designed especially for confinement operations that use self-feeders. Feeding is more convenient for you and every sow in the house gets her fill without getting out of condition. There are three Sow Limited formulas to meet the changing needs of your sows and gilts — from the start of gestation all the way to farrowing.

See your local Master Mix Dealer for all the details about Sow Limited feeds.



## 105-HORSE PERFORMANCE

## TOUGH ACT TO FOLLOW

Meet the new 7000 a 105-hp tractor born into the Allis-Chalmers family with big brother brashness. Climb into its quiet Acousta cab—standard equipment! At your fingertips are 12 forward speeds 3 reverse and a park position. All with shift-on-the-go convenience of the 7000 Power Shift transmission. And with 9 speeds under 10 mph your most-used range.

Then feel the difference this performance-oriented turbocharged diesel can make in your fields. 301 cubic-inches of cool-running power to take on any hard days' work with muscle to spare.

Learn about the many other extras the 7000 brings you at no extra cost. Seeing is believing! Come in now.

\*Manufacturer's maximum observed PTO horsepower at rated engine speed.



**C. J. Wonsidler Bros.** RD1, Quakertown, PA 18951 Phone 215-536-1935 215 536-7523

**Roy H. Buch, Inc.** Ephrata, RD2 717-859-2441

**BHM Farm Equipment, Inc.** Annville, RD1, PA 717-867-2211

**Grumelli Farm Service** Quarryville, PA 717-786-7318

**A. J. Noss & Son** RD2, Oley, PA 215-987-6257

**L. H. Brubaker** Lancaster, PA 717-397-5179

**Shartlesville Farm Equipment** Shartlesville, PA 215-488-1326 H. Daniel Wenger, Prop

## SNOWMOBILE INSURANCE

Even off the beaten path, State Farm is there with the same kind of quality protection and service that made us number one in car insurance. See me for all the details.

J. Wilbur Sollenberger

303 Mable Avenue Smoketown PA Bus. 717-397-3579 Res. 717-392-8900

Like a good neighbor, State Farm is there.



STATE FARM Mutual Automobile Insurance Company Home Office: Bloomington, Illinois

**LEROY M. SENSENIG INC.** Ephrata, PA (717) 733-8668

**ROSS H. ROHRER & SONS, INC.** Quarryville, PA (717) 786-3372

**GRUBB SUPPLY CO.** Elizabethtown, PA (717) 367-1525

**SPANGLER & SPRENKLE INC.** York, PA (717) 843-8889

**PARADISE SUPPLY** Paradise, PA (717) 687-6292

**STEWARTSTOWN MILLING** Stewartstown, PA (717) 993-2055

**HOLLINGER FARM & HOME SUPPLY** Lititz, PA (717) 626-2330

**E. H. KEEN & SON, INC.** Arglen, PA (215) 593-5115



**VAN-MAR FEEDS, INC.** Leesport, PA (215) 926-2121

**SERVICE FEED & SUPPLY CO.** Cardriff, Maryland (301) 452-8444 (717) 456-7433