

Ida's Notebook



Ida Risser

As income tax deadlines near, does your diningroom table become covered with assorted papers and bills or are you better organized than we are?

I'm only too glad to have Allen fill out the complicated forms. It is one of the times that I admit he has the brains in the family. Another time is when he discusses chemistry with the children. After all, he had enough credits in college to teach high school chemistry.

I'm glad we only need file once a year for taxes and also that the deadline falls in the winter season. Many people think farmers have no work in winter but all good farmers have plenty to do in the repair lines. And on a dairy farm the work never stops.

Last month I purchased a book which gives historical background on the Conestoga River watershed. It is approximately 50 miles

long and at one time powered 400 forges, grist mills and saw mills. In the past the river was a source of electrical energy for small communities at Slackwater and Rock Hill. There is a picture in the book of Wolf's Mill at Brownstown (built by my great, great grandfather) which supplied electricity at a cost of \$1.00 per month.

Within two or three miles of our farm, there are three covered bridges and a beautiful arch bridge and a large flour mill. Also, the remains of Henry Lemans Long Rifle Shop which forged guns from 1834-1887. Long ago there were many two or three story stone buildings for storing 300 pounds blocks of ice from the Conestoga. Straw of sawdust was used to prevent blocks from melting into one solid mass. It was then sold for about 10 cents for a 25 pound block.

call was answered by naming "how I earned my first spending money."

Program for the meeting was a talk given by Mary Ann Fisher who had espaced from Hungary as a Jew years ago.

Edith Musser gave a report on the state convention and named the state officers as well as relating information discussed at the event.

Farm Activities

Upcoming Events

Saturday, Feb. 7
Society 1 meeting at the Brunnerville Fire Hall at 1:30 p.m.

Wednesday, Feb. 11
Society 12 meeting at 1:00 p.m. for sewing.

Society 14 meeting at 1:30 p.m. for a tour of the Mennonite Historical Museum.

Society 6 of York County meeting at the home of Mrs. Marian Hewitt.

Thursday, Feb. 12
Society 21 meeting at 7:30 p.m. for a program on the president's ladies and valentines of yesteryear.

Young child workshop set

Dr. James Van Horn, Family Life Specialist, The Pennsylvania State University, will be the featured speaker in a very special workshop on "Communicating With Young Children" to be held on March 2, 1976, at the St. John's United Church of Christ Church, 232 East Market Street, Orwigsburg, PA beginning at 9:30 a.m. with another session in the afternoon at the Pottsville Mission beginning at 1:00-3:00 p.m.

Dr. Van Horn will explore ways of communicating with children. According to Van Horn, "by yelling, shaming, hurting, and so forth we do nothing to enhance the self-esteem or self-concept of the child."

The workshop is sponsored by the Cooperative Extension Service. Babysitting services will be provided. Reservations need to be made for the workshop by calling Mrs. Ruth M. Hand, Schuylkill County Extension Service, P.O. Box 404, Schuylkill Haven, PA 17972 - Telephone: 717-385-3431. Any interested persons may participate in this workshop. There is no charge.

Reservations must be in by Wednesday, February 25, 1976.

—Report any solicitor or salesman without proper credentials to the police

Before moving check plant rules

If you are the owner of house plants or a home gardener planning to move to another state, check first for plant quarantine regulations that may exist, cautions the U.S. Department of Agriculture's Animal and Plant Health Inspection Service (APHIS). The advice also applies to those visiting in other states, who may plan to bring back plants, bulbs and other items.

APHIS officials point out that the purpose of plant quarantines is to restrict the movement of plants and other articles that may

harbor destructive pests such as insect eggs, grubs or nematodes. For a listing of "do's and don't's" when moving plants, write for a free single copy of "Moving? Traveling? Trading Plants." Address your request for the leaflet to: Information Division, AMS-APHIS, U.S. Dept. of Agriculture, 26 Federal Plaza, Room 1653, New York, NY 10007. Please include your Zip Code.

How Come?

Ever wonder why the ghost walks at midnight? It's easy—the last bus usually leaves at midnight

Berks Co. Society 6

The Society of Farm Women, 6, met at the home of Mrs. Carl Herbein on January 20. Trooper Albert, of the Reading Barracks, Troop L, showed a film, "Making Homes More Burglary Proof." Seventeen members answered the roll call question. "Give a Safety Tip!"

The group will be serving refreshments at a sale on Saturday, February 21.

Five ladies, of our group, attended and reported on the State Convention held in Harrisburg on January 5, 1976.

Stanley Products will be sold, and orders given to any member to be brought to the next meeting at the home of Mrs. Merrill Hetrick, Limekiln, on Tuesday, February 17 at 8 p.m.

Society 4

Farm Women Society 4 recently met at the home of Mrs. Landis Huber with Mrs. John Gingrich serving as co-hostess.

Devotions were lead by Mrs. Paul Troop and the roll



Before you select your water system, get the facts on the complete MYERS line.

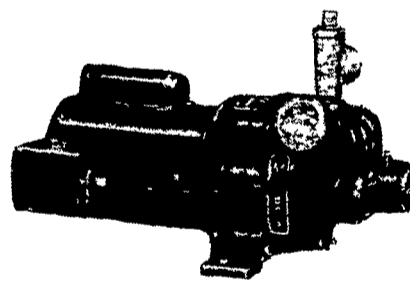


WATER CONDITIONING

Fully Automatic or Manual, Cabinet or Free Standing, Two Tank Models.

WATER FILTERS

Solves objectionable water problems. Fully Automatic or Manual.



PUMPS • TANKS
• PLASTIC PIPE •
• WATER CONDITIONERS •



SUBMERSIBLE PUMPS
(for 4" wells)
Capacities to 3400 GPH, well depths to 900 feet.

"Exclusive" 3 year Warranty from date of installation.



"EJECTO" PUMPS
(convertible) Shallow well — Capacities to 1800 GPH; Deep Well — Capacities to 1260 GPH with well depths to 180 feet.

DISTRIBUTED BY:

BEIBLE'S PUMP & SUPPLY, INC.

• (Main Office) 419-27 Dalton St. Emmaus, PA 18049

• (Branch) 1668 Wyoming Ave. Rt. 11 Forty Fort, PA 18704

AUTHORIZED MYERS DEALERS:

EARL F. KEGERISE, INC.
Pricetown Rd
Fleetwood, PA 19522
215 944 8532

LONGACRE ELECTRIC, INC.
Bally PA 19503
Tel 845 2261

WILLIAM LEWIS & SON
85 Allentown Rd
Elroy PA 18964
Tel 723 3157

MAYER WELL DRILLING
Box 24
Pennsburg, PA 18073
Tel 679 7817

PETERSHEIM BROS. WELL DRILLING
RD1 Box 278
Morgantown PA 19543
Tel 286 5850

PIKEVILLE EQUIPMENT INC.
RD2 Oyesterdale Rd
Oley PA 19547
Tel 987 6277

RICHARD M. SCHAEFFER
RD1, Box 88
Lenhartsville, PA 19534
215 562 8362

LEROY B. SCHANNAUER
RD6
Sinking Springs PA 19608
Tel 777 0304

CLARENCE R. SEAMAN, INC.
Dauberville PA 19517
215 926 2285

RICHARD B. SNYDER CO.
5th St Mountain Drive
RD2
Emmaus, PA 18049
Tel 965 9574

SNYDER WELL DRILLING, INC.
Pine Blvd
Orwigsburg, PA 17961
717-366 2621

STEWART PLUMBING & HEATING CO.
420 State St
Hamburg, PA 19526
215-562 7006

WONSIDLER WELL DRILLING, INC.
RD1
Quakertown, PA 18951
Tel 536 5468



If you have fat cattle or need feeders . . .

THINK NEW HOLLAND

BEEF SALES

MONDAY 2:30 P.M.

THURSDAY 11:00 A.M.

Sale Order - Fat Bulls, Steers, Stockers, Beef Cows and Veal Calves.

NEW HOLLAND SALES STABLES, INC.

Phone 717-354-4341

Daily Market Report Phone 717-354 7288

Abe Diffenbach, Manager

Field Representatives - Bob Kling 717-354-5023

Luke Eberly 215-267-6608