

Poultry Market Reports

Weekly New York Egg Market

Monday, January 26 to Friday, January 30

	Mon.	Tues.	Wed.	Thurs.	Fri.
WHITE					
Ex. Large	76	76	76	73	73
Large	75	75	75	72	72
Mediums	70	70	70	67	67
Pullets	59	59	59	58	58
Peewees	36	36	36	36	36
BROWN					
Large	76	76	76	76	76
Mediums	Unquoted				
Pullets	Unquoted				
Peewees	Unquoted				
Off Grade					
Large	68	68	68	65	65
Checks	41	41	41	41	41

Tone — Slightly irregular.
Copyright 1976 Urner Barry Publications

New England Weekly Shell Egg Report

Tuesday, January 27, 1976

Prices paid per dozen Grade "A" brown eggs in cartons delivered to retail stores:
No market report available at press time.

Baltimore Eggs

Wednesday, Jan. 28
Market steady. Midweek demand tapered off and is no better than fair. Supplies are ample.
Cartoned eggs: Prices to Retailers, State Graded (min one case sale) White: Grade A Large 79-82; Grade A Medium 74-77.

Hay Markets

Paul Z. Martin Regional Hay

Wednesday, Jan. 28
51 loads of hay, straw sold as follows, (one no sale)
Alfalfa Hay 56-109; Timothy Hay 67-78; 1 load of Clover Hay 92; Mixed Hay 52-96; Straw 52-69 and 1 load of firewood, sold by the ton, 25.00 a ton. No Corn.
(All hay No. 2 and better, prices paid by dealers at the farm, price per ton.)
Hay steady to \$5 higher, straw steady.
Alfalfa 75.00-85.00; Mixed hay 60.00-70.00; Timothy hay 55.00-65.00; Straw 35.00-40.00; Mulch 30.00-35.00.

New Holland Green Dragon

January 23
Prices Per Ton
57 loads hay & 25 loads straw.
32 loads hay and 6 loads straw.
Alfalfa 82-106; Timothy 54-61; Mixed Hay 50-85; Clover - 2 loads 57-61; Meadow Hay - 47 (1 load); Straw 46-53.50; Clover Seed 1 load .41 bushel; Corn - 4 loads at 56-70.
Alfalfa, few loads 82.00-109.00, one load at 117.00; Timothy 55.00-66.00; Mixed hay 56.00-85.00, couple at 100.00; Clover, few loads 68.00-81.00; Straw 49.00-55.00; Corn, 4 loads 67.50-73.00; Oats, one load at \$1.60 per bushel.



P.O. Box 266 - Lititz, PA 17543
Office: 22 E. Main St., Lititz, PA 17543
Record-Express Office Building
Phone: Lancaster 717-394-3047
or Lititz 717-626-2191

Dieter Krieg, Editor
Melissa Piper, Associate Editor

Jack Farmakis, National Sales Manager
151 Danforth Drive
New Canaan, Conn. 06840
Ph. 203-966-1746

Subscription Price \$3 per year
Established November 4, 1955
Published every Saturday by Lancaster Farming
Lititz, PA
Second Class Postage paid at Lititz, PA 17543

For Address Change form or new subscription see Classified Section.

Members of Newspaper Farm Editors Assn Pa Newspaper Publishers Association and National Newspaper Association

Delmarva

Poultry

Broiler-Fryer Market
Wednesday, Jan. 28

R.T.C. Movement light except fair to prior commitments. Slaughter schedules reduced as occasional plant not operating today. Today's L.T.L. asking prices mostly 1 cent lower on both plant and U.S. grade A. Live supplies adequate to barely adequate at generally desirable weights. Undertone about steady.

Negotiated trucklot prices 2-3 lb. ready to cook broiler-fryers for delivery next week:

Plant Grade 41
Current broiler-fryer negotiated prices for immediate delivery mostly multiple-drop shipments to New York City from Delmarva:

Range L US Grade A 43-44; Plant Grade 42-43; Premium US Grade A 45-49; Premium Plant Grade 44-47.

Wdt. Average 43.64; Plant Grade 42.88; Premium US Grade A 47.39; Premium Plant Grade 46.72.

Fogelsville Poultry

Tuesday, Jan. 28, 1976

Prices paid dock weights, cents per pound, except where noted.

No market report available at press time.

Auction Day — Tuesday, Each Week - 11:30 a.m. 215-395-6611.

Poultry Received - Mon. 7 p.m. to 10:30 p.m., Tues. 7 a.m. to 12 noon.

Directions — Take Rt. 22 thruway. Exit at Fogelsville Exit, North to stop lite in Fogelsville, turn left, proceed one block, turn left, again at Cracker Barrel Restaurant. Auction right side 100 feet from your last left turn.

NEST RUN EGGS

Prices are from Egg Clearinghouse, Inc., (EC) Durham, N.H. and reflect trading prices for grade A nest run eggs (GNR) on ECI, a nationwide trading center for producers, packers and marketers. GNR eggs are classified by weight in 30-dozen cases, and traded in lots either 300 or 750 cases. Prices are FOB buyers dock, and are computed Tuesday and Thursday of each week. The week's prices for each classification were:

Classification	New Weight Per Case	Tuesday Thursday	
		Tuesday	Thursday
Extra Large	51 lbs.	0	0
Class 1 - Large	48 lbs.	64	62
Class 3 - Medium	42 lbs.	57	57
Class 4 - Small	39 lbs.	48	48
Breaking Stock	48 lbs.	48	48
Checks	43 lbs.	41	41

Philadelphia Eggs

Wednesday, Jan. 28

Prices unchanged. Cartoning demand light to fair at best. Offerings fully adequate especially on large sizes. Undertone cautious.

Prices to Retailers: Sales to volume buyers, consumers grades White Eggs in cartons Delivered: Store Door:

A Extra Large, 78-81; A Large, 77-80; A Medium 70 1/2-73.

Eastern Pa.

Live Poultry Report

Wednesday, Jan. 28

Prices of light type hen unchanged to high. Demand fairly good for ve limited farm offering. Processors operating on part time. Offerings of heat type ample for a light interest.

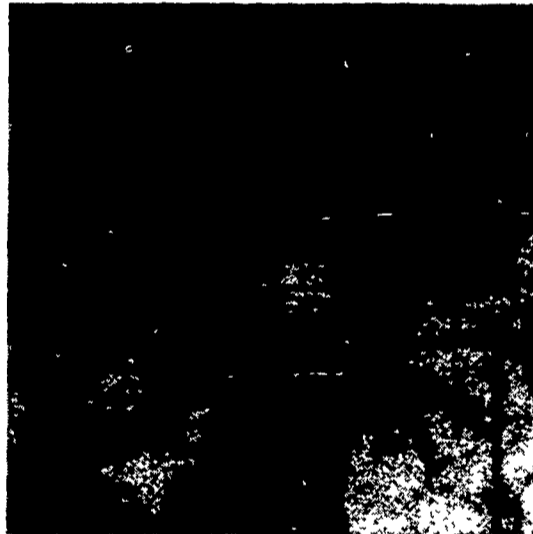
Prices paid at farm: Light type hens 8-1 mostly 10 1/2-11 in Pa., most 9-10 in NJ. Heavy type hen TFEWR.



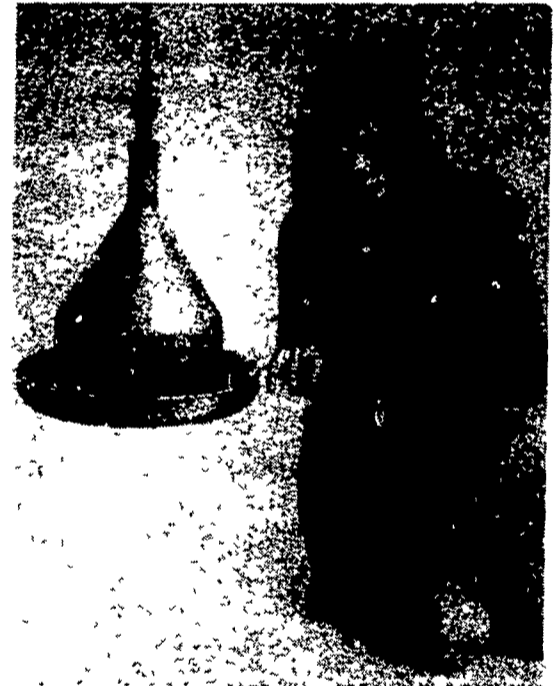
PUT WATER WHERE IT'S NEEDED

WATERMASTER 3

Moulded from polyethylene for ease of cleaning and maximum life. The Watermaster 3 has been designed for use by broilers, pullets, layers and turkeys from day-old onwards.



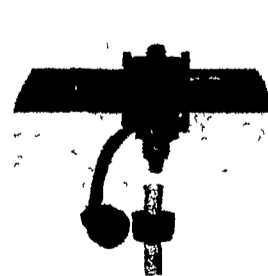
The special anti-perch shape prevents birds from fouling the drinker and in this, the big brother of the world renowned Watermaster 2, the 15 in diameter offers greater drinking space. The valve system is extremely simple to ensure continuous water supply. The large flat filter is easily removed for cleaning and all fittings are self-sealing with no 'O' rings or washers needed. Watermasters are supplied complete with the BEC saddle connector, 10ft. of tubing and suspension. The recommended stocking rate is 10 to 14 waterers per 1000 birds.



The specially designed protective ring for day-old birds is ideal for turkeys, breeding stock and rearing pullets. The water ballast gives excellent stability without making waterers too heavy to handle.

The Bec 75 Waterer:

1. Takes up less room in the house—more room for the birds
2. It is distribution that counts - more drinking points, for the same money, means that the birds have less distance to walk to water
3. Lighter and more convenient to handle and clean
4. At the end of the crop, easy to empty house - one person can carry 50 to 100 waterers
5. Easy Connections a) Saddle connector (see inset) b) Tube fittings (see inset) c) new easy method of raising and lowering the waterer with hanger box



Saddle Connector



Side Outlet

WE SELL, SERVICE AND INSTALL



MODERN POULTRY SUPPLIES, INC.

For more information call or see Jim or Mike Enck.
JAMES J. ENCK
OFFICE: 1044 EAST KING STREET
LANCASTER, PENNA. 17602
717-299-0828
or
WAREHOUSE (PICKUP):
752 EAST ROSS STREET
LANCASTER, PENNA. 17602
717-397-5850