

Directors elected to F & H Foundation board

During the 19th Annual Lancaster County Farm and Home Foundation dinner meeting, one new director was elected to the board with six present directors re-elected to three year posts.

Mrs. Raymond Witmer, Willow Street, joined the board as a new member with Mrs. John Hess, Columbia R2; Abner Houseknecht, Millersville R1; J. Everett

Kreider, Quarryville R2; Jay E. Landis, Lancaster R4; Mrs. Ruth Phillippi, Lancaster and Larry Skromme, Lancaster, being renamed to the Foundation's board.

The directors were elected during the business portion of the meeting which was conducted by the president Jay E. Landis.

In his yearly report,

Landis told the audience that the Farm and Home Center had seen a busy year with a number of meetings having been conducted in the building. He also noted that the farm women of the county had donated over \$2000. toward the center for a piano. The instrument had been purchased and is now in the basement meeting room.

Miss Gloria Longenecker, Miss Lancaster County, provided musical entertainment for the evening's event. The music major at Lebanon Valley College, sang a number of selections from Broadway musicals along with selections for two operas.

Darvin Boyd, associate legislative research analyst for the minority caucus of the Pa. House of Representatives, was the

featured speaker for the dinner meeting.

A former IFYE to Korea and 4-H director in the same county, Boyd expressed the need for Americans to grasp the challenge of commitment in this country and abroad.

Boyd noted that while the United States should be willing to give aid in the form of food, other countries should also be willing to work toward self-sufficiency.

"Technical help is important," Boyd explained, "countries should accept the responsibility of learning to feed their own."

Citing Korea as an example, Boyd told the group that agricultural technology from the United States had helped the country develop a new strain of rice that has increased production of that crop by 50 percent. "This is the kind of help we should be giving," he related.

Boyd explained that America is looked on as the "microcosm of good and honesty" and that even though our country has been plagued with problems, "it is time tested and will prevail to weather the storm."

A former Lancaster County 4-Her, Boyd expressed his gratitude to the organization for the experiences he had gained and also thanked the farm

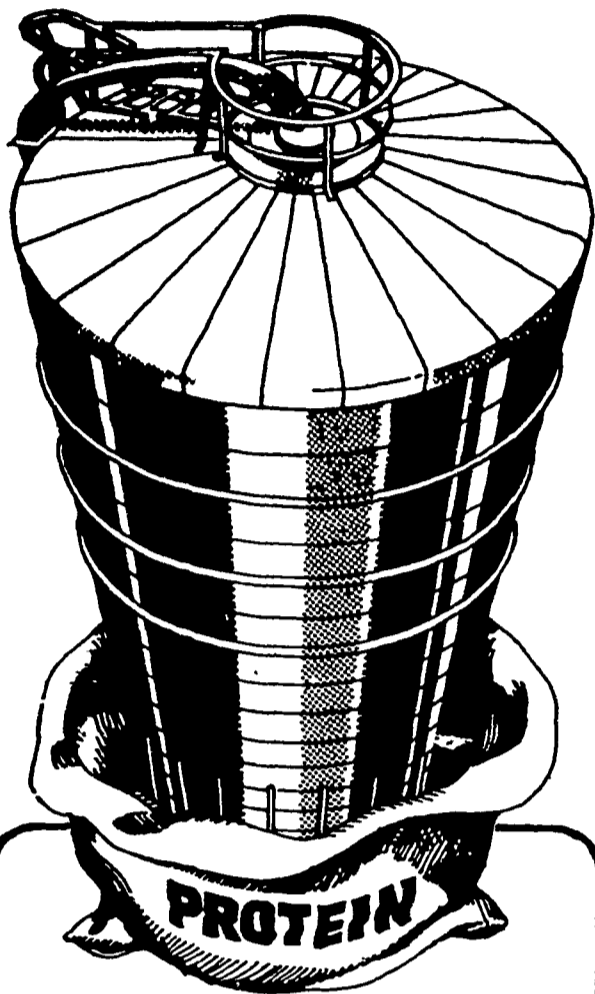
To Follow the Market
I hear considerable discussion recently about the new grading system for beef cattle. At this point how do we know exactly what effect this will have for the producer or the consumer. However, I'd suggest that

women for their contributions to the Farm and Home Center as well as their role in agriculture.

"Farm women are the real heroines of the bicentennial," he remarked. "They represent a real commitment to our history."

Try A Classified Ad It Pays!

producers follow the market prices and trends after this goes into action, and determine how each feeding program fits into the new grading system. With the general public so strong against excess fat on red meat in recent years, I can't foresee how the new grading system is going to hurt the consumer; most housewives don't want the fatty meat anyway. Under the proposed grading system cattle should reach the desired market grade of Choice earlier and with less grain, as compared to the former grading system. Let's see how it works out before you start yelling that you are "hurt".



PROTEIN

Don't buy it, grow your own

Good alfalfa haylage may be 20% to 25% crude protein. 90% of the digestible protein is in the leaves. Losing the leaves costs you money. With a Harvestore feed processing system, you can harvest your alfalfa in the bud stage, when it's most nutritious. Cut and windrow one day, blow it into your Harvestore the next. Baling and hard labor are eliminated. The valuable leaves are saved. Supplement purchases may be drastically reduced. Your feed is more palatable, more nutritious. Check it out.

ASmith
HARVESTORE
Products, Inc

PENN JERSEY
HARVESTORE

P.O. Box 91 New Holland, PA 17557
(717) 354-4051

ERTH-RITE
SOIL CONDITIONER

MAXICROP
LIQUID PLANT FEEDING

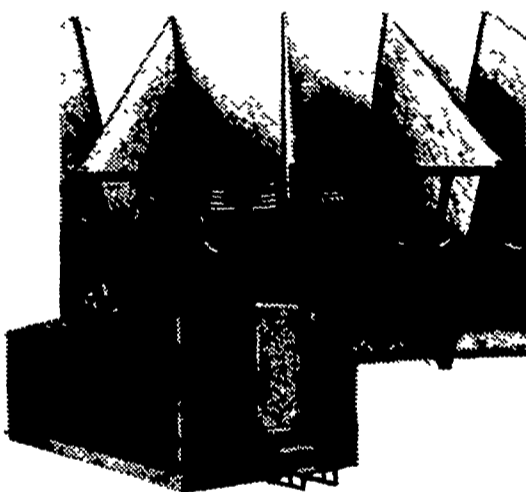
FEED-RITE
Vitamin & Mineral for livestock and poultry

ZOOK & RANCK, INC.

RD1, Gap, PA 17527
Phone 717-442-4171



CALF CASTLE



Now you can get AGSTAR quality in a complete, ready-to-use, factory-built nursery building. Sizes are available with stalls for up to 32 calves—delivered complete with slotted flooring, water heater, sink, ventilation system, heater and just about everything else you need to make your good calf management pay off. Clip this ad and mail in for information, or contact the distributor named below who serves your area.

BANK FINANCING & LEASING AVAILABLE

AGSTAR
STAR AGRI PRODUCTS

distributed by

E. M. HERR
EQUIPMENT, INC. 717-464-3321
RD1, Willow Street 17584



For Modern Living:
Dependable LP-Gas

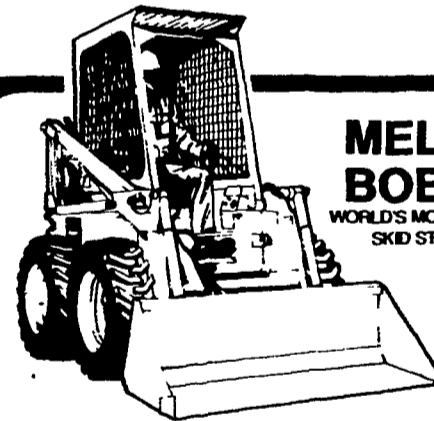
SERVING FARMERS
"WE MAKE IT OUR BUSINESS"

CALL (717) 665-3588

MYER'S METERED
GAS SERVICE, INC.

P.O. BOX 71

MANHEIM PA. 17545



MELROE
BOBCAT
WORLD'S MOST POPULAR
SKID STEER LOADER

Before you buy
any farm loader,
see a Bobcat in action!

4 - MODELS To Choose From, all with 4-Wheel Drive. BOBCAT Handles small jobs, big jobs, indoors, and outdoors. Ideal for working in HORSE BARN, HOG BARN, FEEDLOTS, ETC. Almost anyone can learn to operate a BOBCAT in 15 minutes. LET US DEMONSTRATE and Show you how easy it is to own a BOBCAT.

SALESMAN **RAY SHOWALTER**
PH. 665-7174

GRUMELLI'S FARM SERVICE



Quarryville, Pa. 17566
Phone (717) 786-7318