

Twin Valley square dancers participate in state contest

The Twin Valley Young Farmers square dancers recently danced in the 19th annual folk dance contest at the Pennsylvania Farm Show. Members of the square dance set, representing the Berks-Chester County area, were: Richard and Barbara Kurtz, Robert Stoltzfus and Beth Swartzentruber, Melvin Houck and Melody Kurtz, Harold Steve and Michelle

Bowman. Coaches for the team were Wayne and Linda Lutz.

The group was among 480 participants from 22 counties who danced before a large crowd in the farm show arena.

Each of the 60 sets dancing in the competition, was costumed uniformly and attractively in their own unique way. The Twin Valley Young Farmers were

dressed in red and white checkered skirts and white blouses for the girls and white shirts, navy pants, red and white checkered vests, and black bow ties for the men.

The square dance program is designed to encourage participation and elevate the standards of performance in folk dancing.



Shown are the Twin Valley Young Farmer square dance set who recently danced at the Farm Show. The couples are from left to right:

Barbara and Richard Kurtz, Beth Swartzentruber and Robert Stoltzfus, Melody Kurtz and Melvin Houck, and Michelle Bowman and Harold Steve.

Montgomery 4-H'ers have beef supper today

Beef from 4-H project steers will be the feature item at the annual 4-H Livestock Club Baby Beef Dinner on Saturday, January 24 from 4-8 p.m. at the Montco Vo-Tech School on Sumneytown Pike in Lansdale. The meal is served country-style and includes meat entree, vegetables, potatoes, dessert and beverage, all served by 4-H'ers.

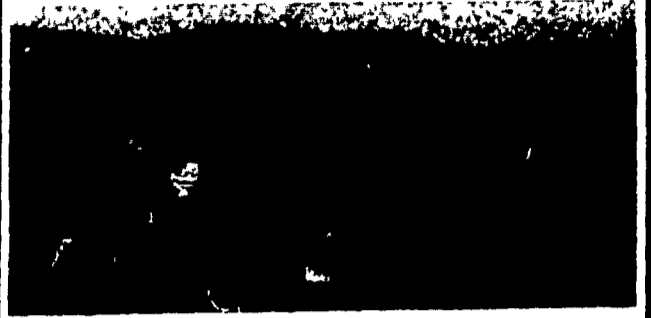
Many hours of volunteer effort make this event a success. Chairman for this year's supper is Gordon Alderfer, Kulpsville. Gordon is currently a leader in the livestock club and works primarily with the swine projects. Mrs. Durrell Alderfer, Harleysville is in charge of ordering and preparing the food; Mr.

Lewis Heiser, Lock Haven (formerly of Norristown) who brought the steers at the 4-H Sales; and Mrs. Willard Crossgrove, Mainland, will head up the dining hall and waitresses.

Tickets are \$4.25 for adult and \$2.00 for children (under 12). Tickets may be pur-

chased at the door, ordered through Livestock Club member or by calling the Cooperative Extension Service at 277-0574. The group plans to serve 1,500 ticket holders. Proceeds from the dinner will support activities of the Livestock and other 4-H Clubs.

BUNK FEEDERS-WOODEN CONVEYORS



CUSTOM BUILT TO YOUR SPECIFICATIONS.

- +INCLINE TO LEVELS
- +DROP OUTS ANYWHERE
- +USES VERY LITTLE HORSE POWER

COMPARE THE COST

.....

EXPERIENCED SERVICEMAN
DONALD R. NISSLEY

Box 170, New Providence, PA 17560
Phone (717) 786-7654

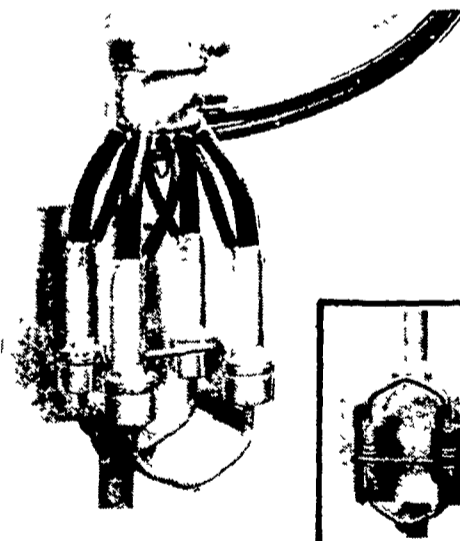
Human nature seems to endow every man with the ability to size up everybody but himself.

Nothing is really work unless you would rather be doing something else.
Chub De Wolfe



DON'T FORGET
WENGETS AND GRAYBILLS DAIRY SHIPPERS— CALL US FOR YOUR RECORDING THERMOMETER
(717) 274-1242

Zero[®] Concord C.I.P. UNIT WASHER



SPECIAL FEATURES
OF ZERO
C.I.P. UNIT WASHER

Eliminates the drudgery of carrying units to milk room.

Automatically drains

Self closing

All stainless steel construction

New Zero Concord unit with specially designed stainless steel shells to make clean in place possible.

Ease of unit washing operation is simplified.

Fits any concord milking systems either vacuum or non-vacuum.

An easy and simple unit to install.

Used Tanks & Milking Equipment

DUMP STATIONS VACUUM PUMPS
SPUTNICKS BUCKET MILKERS
NEW AND USED COMPRESSORS ALL SIZES

—DEPEND ON US—

COME IN, WRITE OR PHONE FOR FULL INFORMATION!

JAY M. HORST
DAIRY EQUIPMENT

R.D.1 Lebanon, PA Phone (717) 274-1242
Sales Rep. in Lanc Co.
Bill Guhl Phone (717) 529-2569

Zero - PIONEER OF FARM BULK MILK COOLERS

We are on
call 24 hours
a day
- 7 days
a week

**SERVICE
IS THE
STRENGTH
OF OUR
BUSINESS**

PATZ

Feeding Equipment



Models and systems to suit any requirement
Silo unloading - Feed handling - Manure handling

**Patz has the Equipment
Patz has the Personnel
Patz means confidence —
depend on it.**

Contact your nearest Patz dealer listed below

GEORGE HEATH, DISTRICT MANAGER Mechanicsburg 697-1166

ALEXANDRIA

MAX ISENBERG
669-4027

LEBANON

MARVIN HORST
272-0871

BALLY

LONGACRE ELECTRIC
845-2261

McALLISTERVILLE

CLAIR SANER & SON
463-2234

CAMP HILL

LLOYD SULTZBAUGH
737-4554

MILLERSBURG

LANDIS LABOR SAVERS
692-4647

EAST EARL

ZIMMERMAN EQUIPMENT
445-6409

MILTON

LANDIS FARMSTEAD AUTOMATION
437-2375

ELLIOTTSBURG

CARL BAER
582-2648

NEWVILLE

FRED B. MCGILLYRAY
776-7312

HAMBURG

H DANIEL WENGER
488 6574

PIPERVILLE

MOYER FARM SERVICE
766-8675

HONEY BROOK

ZOOK'S FARM STORE
273 9730

STREET MD

WALTER WEBSTER
452 8521

KIRKWOOD

LANDIS & ESBENSHADE
786 4158

THOMASVILLE

KENNETH L SPAHR
225 1064