

Real Estate

Real Estate

**YATES and SCHUYLER COUNTIES
NEW YORK STATE**

FARMS all types and sizes Homes Businesses
Call anytime 607-243-7410 or write:

STOCKING, Broker Dundee, NY 14837

SOUTH CENTRAL PENNA. FARMS

EXCELLENT DAIRY — 158 Acres, York County, 38 tie stalls, stable cleaner, 12 x 35' silo, beautiful stream in front of buildings, 8 room brick house with bath and fireplace.

SECLUSIVE HOG FARM — 135 Acres (65 tillable) Perry County, 25 stall farrowing house with radiant heat, 38 x 60' beef barn, fantastic spring near house - total farm water supply, remodeled 8 room brick house with bath, wall to wall carpeting

COUNTRY ESTATE — 212 Acres, Adams County, large Colonial brick house (special charm) 13 rooms, 2 baths; large Western style barn, spring water supply, beautiful 3 Acre farm pond.

PRODUCTIVE LIMESTONE — 150 Acres (130 tillable) Cumberland County, dairy - 24 stallion stalls, stable cleaner, 10 x 40' silo, other miscellaneous buildings. Grey limestone house, 8 rooms, 1½ baths, secluded, 1800 ft creek frontage, 5000 ft. road frontage.

CIVIL WAR "MANSION" — 55 Acres (or 15 Acres), Adams County, beef present use; bank barn, 12 x 40' silo, 32 x 60' implement shed, double wagon shed, 2 car garage, large beautiful brick house with open staircase, 13 rooms, 7 bedrooms, 3 baths, 4 fireplaces, new furnace (gas-hot water) beautiful stream near buildings.

BETWEEN NEWVILLE & NEWBURG — 66 Acres, Cumberland County, Central - Creek through farm, frame house and barn, house has 16 rooms, 5 bedrooms, 1 bath.

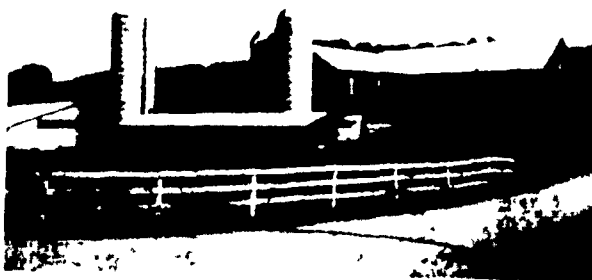
John B. Niesley, Farm Representative
Home Phone - 243-7575

GEORGE L. EBENER, REALTOR

Carlisle, PA
Phone - 243-6195

PERRY COUNTY, PA.

For sale by Owner
225 ACRE DAIRY OR BEEF FARM
180 Acres tillable
Call (717) 789-3159 or
Write Box 257 New Bloomfield, Pa 17068



LET'S TALK ABOUT FARMS

We have adjacent farms two miles from Sunbury, 188 acre Dairy, 112 Crop, very productive land and an excellent long term investment with over 2 miles of road frontage. A 75 stall dairy barn with additional loose housing, a bunk feeder, 4 silos, 1,000 gal. milk tank, a very nice stream & 2 ponds, a beautiful 12 room & 3 bath, brick home on the dairy farm. A recently remodeled 4 bedroom, 2 bath home on the crop farm. The farms can be bought individually, but together they would be a beautiful farm.

NEW LISTING

245 acres in Bradford County with a new 80 free stall loose housing barn, 60 ft. bunk feeder, 2 large silos, a double four milking parlor, a very nice 10 room 1½ bath, brick home.

Near Berwick, 120 acres, 56 comfort stalls, barn cleaner, 20x60 silo with unloader, milk transfer system, 675 gal. milk tank, spring, stream & 3 acre pond, an 8 room & bath, frame home and 2 nice mobile homes.

FOR INFORMATION ON FARMS,
LARGE OR SMALL, CALL
CLARENCE LYONS, REALTOR



Real Estate

Real Estate

CENTRAL PA. FARMS

Centre County - 152 Acre Grain Farm near State College, suitable for hog or beef operation, excellent level limestone soil, good bank barn & out buildings, solid brick home built in 1863, \$230 000 with liberal terms

Centre County - Near Sayres Dam, 189 acres with timber value, excellent hunting fishing and recreation Only \$350 per acre with terms

Blair County - Fine Dairy Farm 214 acres, excellent buildings stanchion barn Reg Holstein Herd with rolling herd avg of over 16 000 lbs milk Full line of good equipment Package price with good terms!

Clinton County - 324 acre dairy farm (247 acres tillable), 2 good houses 2 barns 60 silo with bunk feeder free stalls excellent water supply, low taxes priced under \$1 000 per acre with 7 percent terms
Huntingdon County - 293 acres (250 tillable) excellent limestone soil high productivity 2 houses 2 creeks, large barn several miles road frontage \$225 000 25 miles from Penn State

Huntingdon County - 146 acre Dairy farm 120 acres tillable small stream 40 stall barn gutter cleaner silo 4 bedroom home Price reduced Terms available

Clinton County 151 acre farm suitable for dairy or livestock operation 110 acres tillable good 6 bedroom house large bank barn good condition spring water \$125 000 with terms

Westmoreland County 92 A with good bank barn & excellent large 4 bedroom home Rt 66 road frontage Prime for development Priced fairly \$139 500

Sold Your Farm? Looking For An Investment? We have a Centre County 20 unit motel Excellent condition only \$94,000 with modest down payment and low interest terms This property will provide a good independent income for a family



FARM SALE REPRESENTATIVES

Fred Strouse, manager PH (814) 364-1705
Dan Knode PH (814) 635-3883
F. J. Kissinger, broker PH (814) 238-7308
Don Myers PH (814) 422-8111

245 South Allen St. State College
PH: (814) 234-4000
"Serving Central Pa. Since 1933"

STEIGER

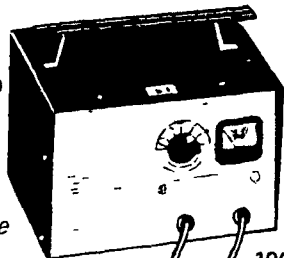
NOW FOR THE 1st TIME YOU CAN SEE AND
DRIVE THE NEW STEIGER PANTHER II
ON DISPLAY

Call Dick Bomberger

Call Us. It Could Be We Have It

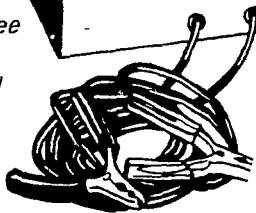
**Get a sure start with an
IH BATTERY CHARGER.**

Dead battery?
No problem with
any of these tough
guys. Just hook
up and hit the
starter. You'll go!

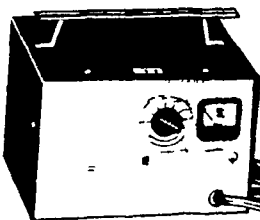


30-amp
heavy-duty
charger
and
booster

One-year guarantee
against defects of
workmanship and
material

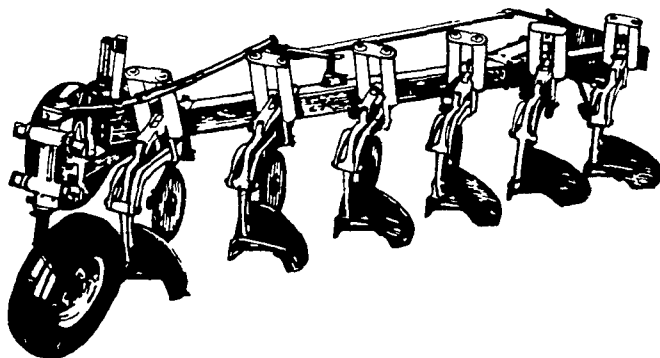


100-amp
charger



15-amp
charger
and
booster

**PRE-SEASON
PLOW SPECIAL . . .**



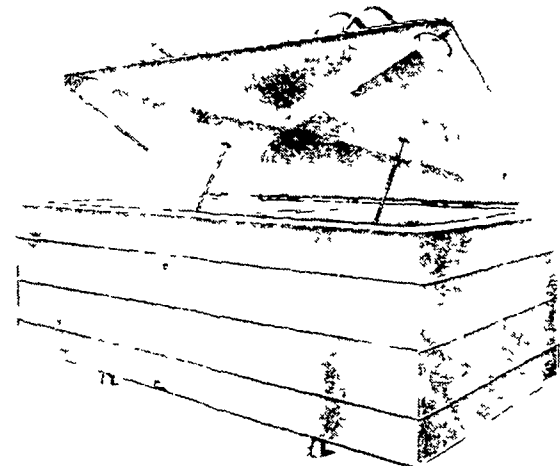
720 Automatic plows - all sizes
510 trip plows - 4 & 5 bottom
440 Mtd. trip plows - 3 bottom
450 Mtd. Automatic - 3 bottom
CALL US BEFORE YOU BUY.

SUPER SPECIAL
700 5 BOTTOM
AUTOMATIC PLOW
[EXCELLENT COND.]
\$1975.00

USED EQUIPMENT

Farmall 1456 Diesel Farmall 460 Gas
Farmall 706 Diesel Ford 2000
Farmall 856 Diesel Oliver 1650 gas
Farmall 656 Diesel Hydro Case 1370 Diesel w duals
Farmall 656 Gas

GIRTON PERFORMANCE
SPEAKS LOUDER THAN WORDS



NEW GIRTON TANKS

300 - GAL.
400 - GAL.
ON HAND 500 - GAL.
FOR IMMEDIATE DELIVERY 600 GAL.

SPECIAL

1 - USED D-2 800 GAL. TANK
EXCELLENT COND.
READY TO GO \$1510.00

24-Hour Service - Contact Gratz M. Sult at
C. B. Hooper & Son, Phone 768-8231
After 5:00 P.M. Phone 768-8555

RADIO CONTROLLED TRUCKS FOR BETTER SERVICE



C. B. HOOPER & SON

INTERCOURSE, PENNA.

768-8231

WE ARE NOW AN AUTHORIZED UPS STATION

