

Dewart Auction

Dewart, PA
January 12, 1976

CATTLE 229. Compared with last Monday's market, slaughter cows about steady. Few Choice slaughter steers 43.60-44.85, Good 39.00-43.00, Standard 34.00-37.85, Utility 28.25-32.50. Couple Good slaughter heifers 40.75 and 42.00, few Utility 25.75-27.50. Utility and High Dressing Cutter slaughter cows 24.75-27.75, Cutters 23.25-25.25, Canners 21.00-23.00, few Shells down to 16.00. One Good slaughter bullock at 36.75, one Standard at 35.00. Few Yield Grade No. 1, 1100-1400 lbs. slaughter bulls 29.50-34.00. Few Medium and Good 650-850 lbs. feeder steers 24.50-30.00.

CALVES 186. Vealers grading Utility about steady. Few Choice vealers 59.00-72.00, few Good 46.00-55.00, Standard 30.50-40.00, Utility 90-110 lbs. 24.00-28.00, 70-85 lbs. 20.50-23.50. Farm Calves: Few Holstein bulls 90-120 lbs 25.50-30.00.

HOGS 298. Barrows and gilts 25 cents lower. US No. 1-2 190-230 lbs. barrows and gilts 50.80-51.20, No. 1-3 185-240 lbs. 50.40-50.90, No. 2-3 210-270 lbs. 50.00-50.50. Few US No. 1-3 275-475 lbs. sows

42.25-45.00. Few Boars 28.50-41.00.

FEEDER PIGS 83. US No. 1-3 20-45 lbs. feeder pigs 22.00-36.00 per head.

SHEEP 13. Few Choice 90-110 lbs. woolled slaughter lambs 45.00-49.50. Few Slaughter ewes 5.00-8.00.

St. Louis Auction

January 15
Weekly Cattle Review
Receipts

This Week	8,800
Week Ago	8,700
Year Ago	8,700

As compared to the previous week's close, slaughter steers and heifers mostly 50 higher. Cows fully 50-1.00, instances 1.50 lower. Bulls steady. Supply mainly mixed Good and Choice 1000-1150 lb. steers, around 25 percent heifers and 10 percent cows.

SLAUGHTER STEERS: Mixed Choice and Prime 1050 1225 lbs. YG 2-4 43.50-44.00, one load 44 50. Choice 950-1250 lbs YG 2-4 42.00-43.50. Mixed Good and Choice 925-1175 lbs. 39.00-42.00. Good 37.00-39.50. Couple loads Good Holsteins around 1300 lbs. 36.50 and 37.50.

SLAUGHTER HEIFERS: Mixed Choice and Prime 900-1025 lbs. YG 2-4 42.50. Choice

800-1050 lbs. YG 2-4 40.50-42.50, late week sales 40.50-41.50. Mixed Good and Choice 750-850 lbs. 36.50-41.00. Good 33.00-37.50.

COWS: Utility and commercial 23.00-26.00, late week's sales 23.00-25.00. YG 1-2 1100-1600 lbs. 25.00-26.50, closing 25.00-26.00, mostly 25.00. Canner and cutter 20.00-24.00. Canner 15.00-21.00. Shelly canner 13.00-16.00.

BULLS: YG 1-2 1100-1600 lbs. 24.00-28.00.

VEALERS: Few Choice 30.00-34.00.

Peoria

January 15
Weekly Summary
Cattle Receipts

This Week	6500
Last Week	5700
Year Ago	5900

Compared with last week's close, slaughter steers 1.50-3.00 lower. Slaughter heifers 1.50-2.00 lower. Cows 50-1.50 lower. Bulls fully steady. Receipts about 70 percent slaughter steers, 20 percent heifers balance mainly cows. Slaughter steers and heifers continue to decline for the third consecutive week under the influence of increased receipts and a lower dressed beef trade.

SLAUGHTER STEERS: Three loads Choice and Prime 1260-1300 lbs. yield grade 3-4 43.00-44.00, load late Monday 1250 lbs. 45.00; Choice 1000-1300 lbs. yield grade 2-4 closed 41.25-42.75, up to 44.00 early; Mixed Good and Choice 900-1300 lbs. 40.00-42.00; Good 35.00-40.00; Standard and Good 32.00-36.00.

SLAUGHTER HEIFERS: Choice and Prime 900-1050 lbs. yield grade 3-4 41.00-41.50, several Monday 43.00, few 43.25; Choice 850-1050 lbs. yield grade 2-4 39.00-41.00; 750-850 lbs. 34.50-39.00; Mixed Good and Choice 750-1000 lbs. 31.00-37.00; Good 27.00-32.00.

COWS: Utility and Commercial 21.00-24.00; high-dressing utility 25.00, several early 26.00-26.75; cutter 18.00-22.00; canner 14.50-18.50.

BULLS: Yield grade 1-2 1100-1800 lbs. 23.00-28.00; several yield grade 1 1700-2000 lbs. 30.00-32.00.

Martinsburg

Morrison Cove
Livestock Auction
Martinsburg, PA
January 12, 1976

CATTLE 208 Compared with last Monday's market, slaughter cows mostly 50 cents to \$1.50 higher. Good slaughter steers 38.75-42.25, Standard 31.10-38.50, few Utility 26.00-30.50 Choice & High Choice slaughter heifers 40.00-43.25, one at 44.00, Good 32.00-38.85, few Standard 25.00-28.75. Utility & High Dressing Cutter slaughter cows 25.60-27.90, one at 28.35, few Commercial 25.50-27.50, Cutters 23.00-25.50, Canners 20.00-23.00, Shells down to 17.50. One Utility slaughter bullocks 25.75 and 28.60. Couple Yield Grade No. 1 1490 and 2020 lbs. slaughter bulls 30.00 and 31.25; one yield grade No. 2 1775 lbs. at 30.10.

CALVES 216. Vealers grading Utility & Standard uneven to \$2 higher. Few Choice vealers 64.00-70.00, few Good 45.00-59.50, Standard 34.00-46.00, few Utility 110-120 lbs. 27.00-31.00, 90-110 lbs. 21.00-26.00, 70-90 lbs. 17.00-21.00, few 60-70 lbs. 15.00-17.00. Farm calves, holstein bulls 90-115 lbs. 24.50-36.50; few beef cross bulls & heifers 70-90 lbs. 20.50-25.50.

HOGS 208. Barrows & gilts mostly \$1 to \$1.25 higher. Few US No. 1-2 200-240 lbs. barrows & gilts 51.80-52.50, No. 1-3 200-250 lbs. 51.00-51.90, No. 2-3 200-265 lbs. 49.90-51.00. US No. 1-3 250-460 lbs. sows 42.00-48.00. Few Boars at 30.00.

Pa. Auction Summary

Harrisburg, PA
Week Ending
January 9, 1976

CATTLE 6768. Compared with 4367 head last week, and 6429 head a year ago. Compared with last week's market, slaughter steers unevenly steady Slaughter heifers steady to mostly 50 cents higher. Slaughter cows mostly steady, spots to 50 cents lower. Slaughter bullocks weak to \$2 lower. Slaughter bulls firm to \$1 higher.

STEERS. High Choice & Prime 46.25-49.00, Choice 45.00-47.50, Good 39.50-45.00, Standard 32.00-39.50, Utility 24.00-33.00. **HEIFERS:** Choice 40.00-44.00, Good 32.00-40.00, Standard 26.00-32.50, Utility 24.00-28.00.

COWS. Utility & High Dressing Cutter 24.50-28.00, few to 29.00, Cutters 23.00-26.00, Canners 19.75-23.50, Shells down to 15.00. **BULLOCKS:** Choice 39.00-43.00, Good 33.00-39.00, Standard 28.00-32.50, Utility 25.00-28.50. **BULLS:** Yield Grade No. 1 1000-2000 lbs. 28.00-34.75; yield grade No. 2

To prevent itself from being inundated with paper, our federal government uses microfilm which can reduce the size of original documents up to 200 times. This not only helps to reduce costs, but solves its problems of information handling as well.

Sign in a cluttered, old-fashioned hardware store: "We've got it if we can find it."

FEEDER PIGS 39. US No. 1-3 25-35 lbs. feeder pigs 25.00-37.00 per head, few No. 1-3 50-60 lbs. 45.00 per head. **SHEEP** 0. No sales on offer.

900-1600 lbs. 25.00-31.50. **FEEDER CATTLE:** Good & Choice 300-900 lbs. feeder steers 27.00-39.00

CALVES 4241. Compared with 2985 head last week, and 4164 head a year ago. Vealers, some unevenness, mostly \$2 higher, spots \$5 higher.

VEALERS Few Prime 68.00-77.00, Choice 55.00-68.00, Good 45.00-60.00, Standard 33.00-50.00, Utility 115-125 lbs 25.00-36.00, 90-115 lbs. 22.00-28.00; 65-85 lbs. 17.00-23.50. Farm calves, holstein bulls 90-120 lbs. 25.00-44.50.

HOGS 7256. Compared with 5297 head last week, and 6818 head a year ago. Barrows & Gilts mostly steady to \$1 higher, most advance latter half of week.

BARROWS & GILTS: US No. 1-2 200-240 lbs. 51.00-54.00, No. 1-3 200-250 lbs. 50.00-53.50, No. 2-3 190-260 lbs. 48.50-51.00, No. 2-4 240-275 lbs. 46.00-51.00, No. 2-4 160-190 lbs. 46.00-49.00. **SOWS:** US No. 1-3 300-575 lbs. sows 39.00-46.00, No. 2-3 300-650 lbs. 32.00-40.00. Boars 31.00-39.00.

FEEDER PIGS 1025. Compared with 292 head last week, and 1854 head a week ago. Feeder Pigs mostly strong to \$3 higher. US No. 1-3 20-35 lbs. feeder pigs 15.00-34.00 per head, No. 1-3 35-50 lbs. 30.00-49.00, few No. 1-3 50-80 lbs. 45.00-53.00 per head.

SHEEP 564. Compared with 621 head last week, and 729 head a year ago. Woolled slaughter lambs steady to \$1 higher. Choice 75-100 lbs. woolled slaughter lambs 45.00-50.00, few to 55.00, Good 60-110 lbs. 35.00-45.00, few Utility 45-70 lbs. 31.00-39.00. Slaughter ewes 10.50-19.50.

FISHER SPRAY PAINTERS

(Henry K Fisher)

SANDBLASTING and SPRAY PAINTING

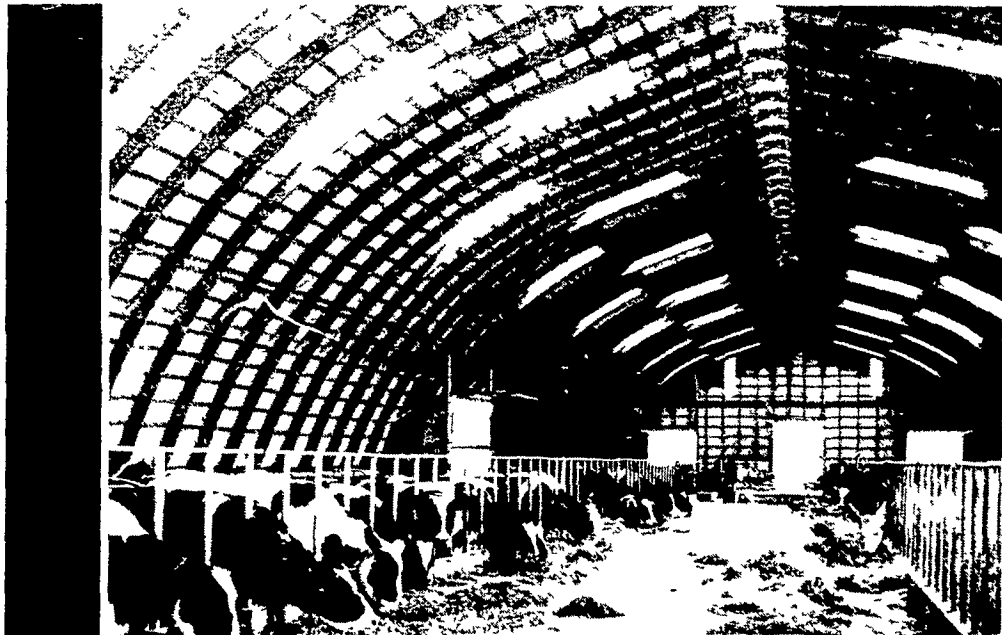
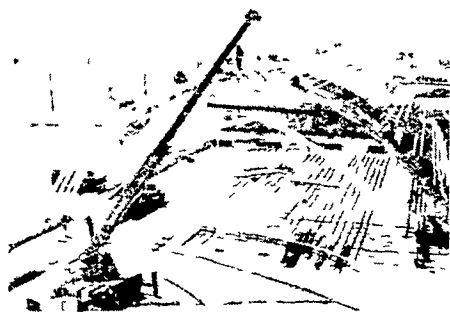
INTERIOR and EXTERIOR
Aerial Ladder Equipment

Office & Shop 667 Hartman Station Rd
Residence - 2322 Old Philadelphia Pike
Lancaster, Penna

For FREE Estimates Call 717-393-6530

Laminated Rafters:

The First Choice
for Economical Space
True Flexibility
and Total Satisfaction...



Telephone: (717) 866-6581

RIGIDPLY RAFTERS
MANUFACTURERS of
LAMINATED RAFTERS
and WOOD ROOF TRUSSES

RICHLAND RD1, Pennsylvania 17087
OAKLAND RD2, Maryland 21550

MAXIMIZE HER PRODUCTION

WITH THE
young's
PROFIT BUILDING
PRE - MIXES

You know she needs top nutrition to produce her best. But you can't afford to invest in minerals she doesn't need or can't use.

Young's PRECISION NUTRITION PRE-MIXES are designed to develop PEAK PRODUCTION with a minimum investment. These economical profit builders provide exactly what she needs with no wasted ingredients.

Whatever your ration mix of grains, legumes and non-legumes - Young's offers a pre-mix to provide the precise nutritional complement. Only ingredients most biologically available to her are used in the Young's formulas - another PROFIT BUILDING PLUS for you.

FREE university forage analysis* and feed programming starts her on the PROFIT-BUILDING ROAD to PEAK MILK PRODUCTION. Regular consultation with your **young MAN** keeps her there.

The local **young MAN** has the training and experience to provide nutritional guidance for all your feeding needs.

Give him a call today.

*With a specified minimum purchase



young's, inc.

NUTRITIONAL SUPPLEMENTS FOR LIVESTOCK