

Livestock market and auction news

Omaha Cattle

January 8

Weekly - 51 - Cattle compared with the previous weeks close - Closing prices slaughter steers steady to 25 cents lower, heifers fully steady. Cows steady to 1.00 higher and bulls firm to 1.00 higher.

Four Day Receipts 16,900 as compared 14,600 previous holiday period and 21,900 a year ago. Slaughter steers approximately 40 pct, heifers 33 pct, cows 17 pct, and feeders for Friday auction 8 pct. Overall finish

steers supply not attractive with predominance good to average-choice. Fair percentage choice heifers included but most classes included many cattle carrying considerable mud. Fed cattle prices forced downward on opening session in reflection of a depressed carcass trade. Although in need of cattle to meet immediate slaughter requirements, most buying interests cautious and selective. Much of early price downturn regained at mid-week as movement of carcass beef improved and prices again pointed upward.

STEERS: Closing at midweek high time, load high-choice 1200 lbs. yield grade 3-4 45.50. Choice 975-1225 lbs. yield grade 3-4 43.50-45.25, many 44.00-45.00, load 1418 lbs. yield grade 3-4 44.00 Tuesday. Mixed good and choice 950-1200 lbs. 42.50-43.75, occasionally to 44.00. Good 900-1200 lbs. 39.00-41.50. Standard and low-good 36.50-38.00. Average of LS-214, detailed quotations, for choice 900-1100 lb steers this week 44.05, choice 1100-1300 lbs 44.50. **HEIFERS:** Load choice and prime 1040 lbs. yield

grade 3-4 44.00 at midweek. Choice 850-1050 lbs. yield grade 2-4 42.50-43.50, some quite muddy these weights, and some mostly choice 800-850 lbs. 41.50-42.00. Mixed good and choice 750-975 lbs. 40.50-42.00. Good 34.00-39.00, small lots standard and good 29.00-32.00. **COWS:** Utility and commercial 23.00-25.50, few to 26.00. Canner and cutter 18.00-23.00, Mixed cutter and Utility 23.25-23.50. **BULLS:** Yield grade 1&2 1400-2000 lbs. 25.00-29.50, individual yield grade 1 30.00-31.00. MGI.

Dewart

Dewart, PA
January 5, 1976

CATTLE 156. Compared with last Monday's market, slaughter cows steady to 50 cents higher. Few Good and Choice slaughter steers 40.00-44.25, few Standard 36.25-39.25, few Utility 28.00-33.00. Individual Good slaughter heifer at 39.25, few Standard 31.75-35.50, Utility and High Dressing Cutter slaughter cows 24.75-27.75, couple to 28.50, Cutters 23.00-25.50, Canners 21.00-23.00. Couple Good slaughter bullocks 34.00 and 37.00, few Standard 31.00-32.00. Few Yield Grade No. 1, 1200-1500 lbs. slaughter bulls 28.00-31.50.

CALVES 193. Vealers grading Utility steady to \$3 lower. Few Choice vealers 62.00-70.00, few Good 43.00-62.00, Standard 35.00-45.00, Utility 90-110 lbs. 24.00-27.00, 70-85 lbs. 22.00-23.50. Farm Calves: Holstein bulls 100-120 lbs. 27.00-36.00.

HOGS 266. Barrows and gilts 50 cents lower. US No. 1-2 210-230 lbs. barrows and gilts 51.00-51.50, No. 1-3 200-245 lbs. 50.70-51.20. US No. 1-3 275-600 lbs. sows 38.75-46.00. Boars 29.50-38.00.

FEEDER PIGS 61. US No. 1-3 35-45 lbs. feeder pigs 35.00-44.00 per head, lot No. 1-3 130 lbs. at 47.00 per hundred weight.

SHEEP 27. Mixed Good and Choice 80-120 lbs. woolled slaughter lambs 45.00-51.00, few Utility 45-70 lbs. 34.50-39.00.

USDA Report

January 5, 1976

Cattle 400. Slaughter steers & heifers fully \$1 lower; Cows firm to 50 cents higher; bulls and feeder cattle steady. Supply 30 percent slaughter steers & heifers, 50 percent cows, 15 percent feeder cattle, balance bulls.

STEERS: Few Choice yield grade No. 3 1100 lbs. 45.00-45.50, couple lots High Good & Choice yield grade 2-4 1150-1165 lbs. 43.00-43.10, Good 975-1300 lbs. 37.00-42.00, Standard & Low Good 26.50-35.25. **HEIFERS:** Good yield grade 2-4 715-1050 lbs. 33.10-36.25, Standard & Low Good 26.85-30.00. **COWS:** Utility 24.00-28.00, Cutter 20.00-24.25, Canner & Low Cutter 17.00-20.00, few 550-760 lbs. 13.00-16.00. **BULLS:** Yield Grade No. 1 1150-1590 lbs. 28.00-32.60, yield grade No. 2 22.50-25.60. **FEEDER CATTLE:** Few Choice steers 835-997 lbs. 38.00-38.85, Good & Choice 550-850 lbs. 34.00-36.00, Good 560-750 lbs. 31.50-33.00, package Choice steer calves 350 lbs. 34.60. Few Good & Choice 385-470 lbs. 30.50-31.00; Choice heifer calves 330-490 lbs. 24.50-26.25, few Good 20.50-22.75.

HOGS 650. Barrows & Gilts mostly 50 cents lower. US No. 1-3 200-240 lbs. 49.00-49.50, No. 2-3 230-260 lbs. 48.50-49.00. No. 2-4 250-280 lbs. 47.50-48.50. **SOWS:** Steady. US No. 1-3 300-600 lbs. 36.00-37.50.

Lancaster Feeder Cattle

Friday, Jan. 2

Feeder Cattle

Today 387
Two Weeks Ago 554
TREND: Small supply feeder steers over 700 lb. steady to 50 lower; bulk of supply 400-550 lb. weights with very few of these sold, few sales 1.00-2.00 lower.

FEEDER STEERS: Choice 880-1090 lb. 38.25-41.25, one load 730 lb. 40.85; mixed Good and Choice 650-950 lb. 32.35-36.25, couple lots 435-550 lb. 31.25-32.25; couple lots Good 450-550 lb. 25.00-29.00.

Lebanon Valley

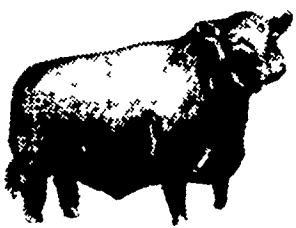
Fredericksburg, Pa.
January 6, 1976
(Reporter off sick)
(Auction not covered)

LEESPORT MARKET & AUCTION, INC.

North end of Leesport

Turn East off Route 61

"WHERE FRIENDS MEET"



BERKS COUNTY'S ONLY WEEKLY CATTLE & SWINE AUCTION - WED. at 1 P.M.

FARMER'S MARKET Every Wed., 12 Noon to 9 P.M.



Garden Fresh Fruits & Vegetables - Bakery Fresh Cakes, Pies and Buns - Butcher Fresh Meats & Cheese - Sporting Goods - Clothing - Furniture - Jewelry - Used Items & Collectibles

Phone 215-926-1307

LeRoy Weist & John Weist, Mgrs.

Parade of the Profit-Makers

These Plus-Proven Sires Are Available Daily For Your Dairy Herd:



15H128 WINTER Hecor Ivanhoe Van
Very Good [88] & Production Qualified [Sept./75]

USDA (Sept./75) - 146 Daus. in 97 Herds Ave. 14,900M 3.90% 581F
Predicted Difference (89% rpt.) +1,024M +\$106 +58F
Type: 24 Classified Daus. Ave. 77.9 (act.); 17 Prs. -1.95 PDT
Sire: Northmoor Leader Hecor - GP & PQ
Dam: Winterthur Ivanhoe Jaunty Paca - VG (88)



15H120 Harrisburg GAY Ideal
Excellent [92] & Gold Medal; Production Qualified [Sept./75]

USDA (Sept./75) - 502 Daus. in 260 Herds Ave. 15,769M 3.66% 577F
Predicted Difference (95% rpt.) +1,183M +\$91 +32F
Type: 110 Classified Daus. Ave. 79.4 (act.); 85 Prs. +.03 PDT
Sire: Tidy Burke Jerry - EX & PQ
Dam: Harrisburg Osborndale Sue - VG (88)

135 DAIRY SIRES ARE NOW AVAILABLE THROUGH OUR PROFESSIONAL TECHNICIAN SERVICE!

Atlantic

LIVESTOCK SERVICES

BREEDERS COOPERATIVE

Member - NAL Affiliated Breeders

24-Hour Toll-Free Phone Service:

Lancaster area 569-0411
throughout Pennsylvania 800-732-0391
Delaware & Maryland 800-233-0216

