

# Greene Co. horseman shows top Belgians

HARRISBURG - Charles B. Orndorff and Son, of Waynesburg, Greene County, swept seven championships in Belgian horse judging at the 60th Farm Show.

Each year Orndorff entries have won the majority of championships in Farm Show Belgian competition.

In stallion classes, Orndorff showed the grand champion, senior champion, and reserve senior champion. In mare classes, he won grand champion, reserve grand champion, and senior champion titles.

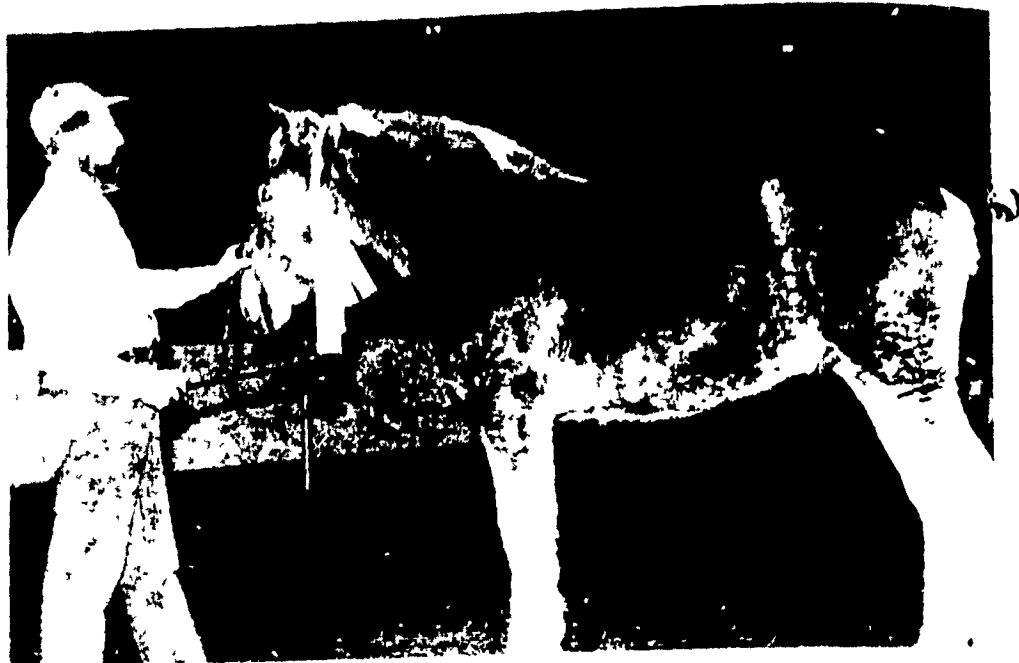
Reserve grand champion stallion was exhibited by J. Herbert Frantz, of Waynesboro, Franklin County. The same animal also was judged the junior champion.

Charles V. Knapp, of Titusville, Crawford County, showed the reserve junior champion stallion.

The reserve senior champion mare was exhibited by H. Ed Messerschmidt, of RD2, Myerstown, Lebanon County.

The junior champion stallion was shown by Charles B. Lindsay, of Greencastle, Franklin County; and Christina Orndorff, daughter of Charles Orndorff, showed the reserve junior champion stallion.

Lancaster County's Elmer Lapp who has 22 Belgians on his farm near Kinzer, brought 10 of them to the Farm Show. He showed the second-place 3-4 year-old stallion, second-place two-year-old mare, first-place foal, second-place junior get of sire, and first-place open get of sire. In addition, he and his team captured first place in the two-horse hitch contest.



J. Herbert Frantz, Waynesboro, showed this nine-month old Belgian colt to first place this week and eventually also to junior champion and reserve grand champion. A half

brother to him was sold at a national sale last year for \$7,100 — the highest price ever paid for a Belgian draft horse.



William Messerschmidt showed the reserve grand champion in Belgian horse show competition. The five-year-old mare is used for some farm work, but primarily for pulling wagons for hayrides and parades. The animal belongs to Mr. and Mrs. H. Edgar Messerschmidt of Myerstown, who say that interest in draft horses has picked up a lot in recent years. The Messerschmidts have had Belgians since 1952 and note that the Bicentennial celebration is sparking greater interest in them. "They're making money, or I wouldn't have them," the elder Messerschmidt said.

## Use artificial logs with caution

Artificial logs should not be used the same way you use real ones, cautions John Sullivan, County Community Resource Development Assistant of the Schuylkill County Cooperative Extension Service.

According to the Consumer Product Safety Commission artificial logs are usually made of sawdust and wax and have special

properties. For example, they can flare up if added to a hot natural wood fire.

A good rule of thumb to follow is to wait at least two hours, giving the wood fire time to die down before adding an artificial log.

The commission also advises that home-rolled newspaper "logs" should not be soaked in flammable fuels

of any kind, because such logs could explode.

Before using artificial logs or any other fire starting products, always read and carefully follow any directions on the wrapping or package.

xxx

Experience is what you get when you were expecting something else.

## GOOD NEWS MUNCY—CHIEF HYBRIDS

MUNCY, PENNSYLVANIA

### SPONSORS

## PENN WINTERNATIONAL TRACTOR PULL

HARRISBURG, PA.

# JANUARY 23 & 24, 1976



## TICKETS AVAILABLE FROM MUNCY-CHIEF HYBRIDS

Ask for Free 1975-76 Award Book on Muncy Chief 200 bu. hybrids and Award & Scholarship Yields Book on 1 and 5 Acre Contest.

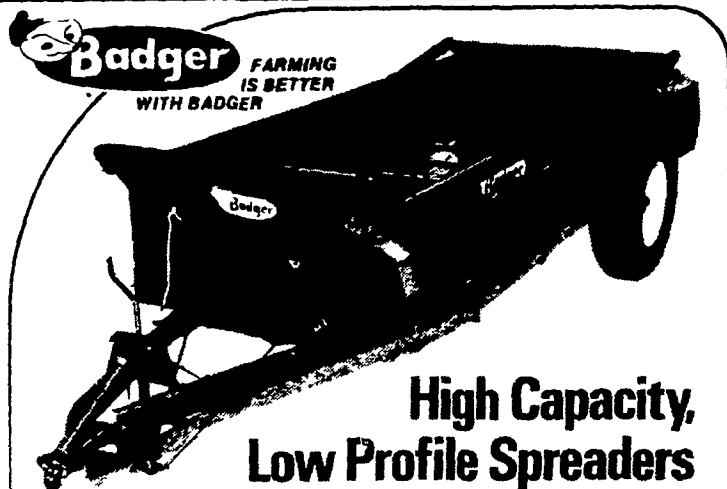
CLIP & MAIL

To MUNCY CHIEF HYBRIDS  
MUNCY, PENNSYLVANIA

- Please Mail Catalog & 1976 Price List
- Interested in Dealership
- Please send information on tickets
- Award Book

NAME \_\_\_\_\_  
ADDRESS \_\_\_\_\_  
PHONE \_\_\_\_\_

Farmer  Dealer  Corn Acres \_\_\_\_\_



## High Capacity, Low Profile Spreaders

Rust Resistant  
Steel Sides...  
160 and 205  
Bushel Models

Badger's rugged, heavy duty manure spreaders are built for convenience and dependable, long life. Feature smooth V-belt drive and four unloading speeds plus fast cleanout. Lubrication requirements are once per month or every 100 loads. Heavy duty conveyor bars have scrapers to keep bed clean, eliminate freezing. Strong 667H pintle chain and penta treated plywood floors give long life. Equipment options include litter pan top beater, hydraulic liquid end gate.

See Your Local  
Badger Dealer



SHOW-EASE STALL  
CO.  
523 Willow Rd  
Lancaster, Pa  
Ph 299 2536

RALPH KETTERER  
Perkasie, RD2  
Deep Run Road  
Ph (215) 766-8531

A. C. HEISEY FARM EQUIPMENT INC.

RD1 Jonestown, Pa  
(717) 865-4526

GRUMELLI'S FARM  
SERVICE  
Mechanics Grove  
Quarryville, Pa  
Ph 786 7318

ISSAC W. HURST  
RD2  
East Earl, PA  
Ph (215) 445 5767

CARL L. SHIRK  
RD5  
Lebanon, Pa  
Ph 274 2436

LOYD E. KREIDER  
RD1  
Cochranville, PA  
Ph (215) 932-2934