

# FARM SHOW SCHEDULE

[Continued from Page 87]

making demonstrations Department of Education Booth Upper Concourse, Large Arena  
 10 00—Spotted Swine Sale—Small Arena  
 10 30—Judging Shorthorns—Large Arena  
 11 30—Poland China Swine Sale—Small Arena

## Wednesday Afternoon, January 7

12 00—Judging Charolais—Large Arena  
 12 00—Judging Polled Herefords—Large Arena  
 12 30—Future Farmers of America Awards Convention, The Forum, Education Building  
 1 00—Chester White Swine Sale—Small Arena.  
 1 30—Jersey Cattle Club Meeting, Office No 2 Large Arena  
 2 30—Berkshire Swine Sale—Small Arena.  
 2:30—Chester White Swine Breeders Assn, Meeting Room D, Main Show Building

## Wednesday Evening, January 7

4 00—Charolais Association Meeting, Room B, Main Show Building  
 4:30—Lightweight Horse Pulling Contest; Six-Horse Hitch Demonstration; Heavyweight Horse Pulling Contest—Large Arena.  
 7:30—Cooperative Swine Breeders Association Executive Committee Meeting, Room C, Main Show Building.  
 9:00—Farm Show Building closes.

## Thursday Morning, January 8

8:00-11:30—Vocational Demonstration Contests, Room A (Auditorium), Main Show Building.  
 8:30—Judging Junior Breeding Sheep—Small Arena.  
 9:00—Judging Junior Beef Breeding Cattle—Large Arena.  
 9:00—Junior Market Swine Show—Small Arena.  
 9:00-12:00—4-H Club Potato and Identification Grading Contest, Room F, Main Show Building.  
 9:30-5 00—Future Homemakers of America home-making demonstrations, Department of Education Booth, Upper Concourse, Large Arena.  
 10:00—Nut Growers Association Meeting, Office No. 2, Large Arena, Second Concourse.

10:00—Judging Junior Beef Steer Classes—Large Arena  
 10:00—Judging Junior Market Lambs—Small Arena.

## Thursday Afternoon, January 8

1 00—Maple Producers Council Meeting, Room 309, Department of Agriculture Building  
 1 00—Junior Lamb Fitting and Showmanship Contests—Small Arena  
 1 30—Nut Growers Association reconvenes, Office No 2, Large Arena, Second Concourse  
 1 45—Judging Junior Beef Steer Grand Champion—Large Arena  
 2:00—Judging Junior Beef Steer Trios—Large Arena  
 3:00—Junior Sheep Blocking and Grooming Contest—Small Arena.  
 4:30—4-H and FFA Tractor Driving Contests—Large Arena.

## Thursday Evening, January 8

7:00—Livestock Cavalcade; 4-H Club Horse and Pony Demonstration—Large Arena.  
 9:00—Farm Show Building closes

## Friday Morning, January 9

8:30—Junior Showmanship Contest—Large Arena.  
 9:30-1:00—Future Homemakers of America home-making demonstrations, Department of Education Booth, Upper Concourse, Large Arena  
 11:00—Junior Market Swine Sale—Small Arena.

## Friday Afternoon, January 9

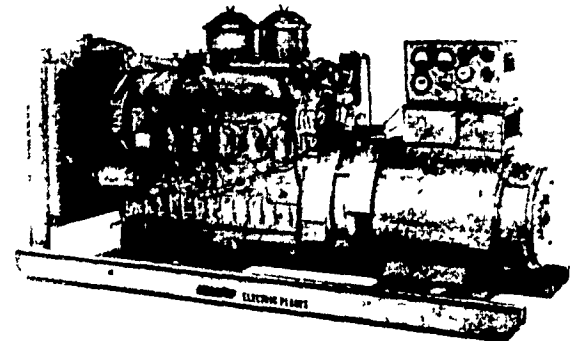
1.00—Sale of Junior Market Lamb—Small Arena  
 2.00—Sale of Junior Steer—Small Arena.  
 4 00—Farm Show closes.

## Electric Generating Systems

Built to Your Specifications

Manual or Automatic

L. P. Gas — Diesel — Gasoline —



Sales - Service

## Martin Electric Plants

Isaac W. Martin, Owner  
 Pleasant Valley Rd., RD2  
 Ephrata, PA (717) 733-7968

## FREY FREE STALL LIFETIME FREE STALL HOUSING



Cut bedding costs 75 per cent, reduce labor for barn cleaning and cow washing, reduce teat and udder injury to the minimum — house your milking herd in free stall housing. Each cow provided a stall for loafing. She won't be stepped on, the rear curb forces manure out into alley for mechanical cleaning or washing. A few minutes twice a day cleans the stalls and curbs, bedding lasts almost forever if your stalls fit the cows. Popular sizes are 6'6", 7' and 7'6". Size 'em by breed.

Our free stall partition may be mounted on wooden head boards or we make a steel divider. Set the legs in 8 to 10" concrete curbs to hold and retain bedding. Stall floor can be soil, sand or gravel. Bedding — straw, sawdust, peanut hulls, ground corn cobs, etc. Should be installed with paved alley surface 8 feet wide for mechanical cleaning or washing.

- 8 Models all steel welded farm and feedlot gates  
 - 2 Models all steel welded head catch gate

For prices, contact: Fred Frey, Mgr.

(717) 786-2146

## FREY BROS.

R.D. 2

Quarryville, Penna. 17566

## Nobody knows a farmer's money problems better than a farmer.

That's why we're pleased that successful farmers such as Amos H. Funk (at left) serve as Advisors to our Agriculture Department. Mr. Funk works with our agricultural lending specialists, like Bob Bucher (right), in solving farm money problems.

With experience like this, we can work out the best loan plan for you—including flexible repayment, to meet your needs instead of our calendar.

Isn't this the loan service you deserve?

## Commonwealth National Bank



Commonwealth National Agri-Loan Corp.

Serving the Agricultural Community of South Central Pennsylvania



### Amos H. Funk

Born and educated in Millersville, Mr. Funk majored in Economics at Penn State. He is associated with his son in growing and retailing fruits and vegetables from his 237-acre family farm. He is an active conservationist, and has served on many state committees concerned with farming and conservation. He was Pennsylvania Master Farmer for 1966 and recently was named State Conservationist of the Year by the Pennsylvania Association of Soil and Water District Directors.