

Christmas display open through Jan. 1

Christmas at Longwood Gardens began yesterday (December 19th). At exactly 5 p.m. that day, the lights flashed on over more than seventy-five trees in the Longwood Parking Lot, and Christmas Tree Lane opened for holiday visitors. In the conservatories, lights were lit at the same time for the first evening of the traditional Christmas Evening Conservatory Display Christmas Tree Lane and the Christmas Evening Conservatory

Display at Longwood will continue nightly through January 1, from 5 p.m. to 9 p.m. Christmas Tree Lane is Longwood's Christmas gift to the public and is open free of charge. Admission to the Conservatory Christmas Display is by payment of the day's admission fee to the gardens, \$1.00 on weekdays and \$1.50 on weekends and holidays.

As always, Christmas Tree Lane is more than just a lot of lighted Christmas trees. Besides stringing lights

around evergreens, Longwood's gardeners have twisted them through the graceful leafless branches of pear trees and run them in a variety of interesting patterns around elm and oak trees. They have also taken care to light trees on a number of different levels. Here and there on low mounds around the Parking Lot, trees have been spotted with the colored lights, so that visitors look up at some trees and straight ahead at others. The Longwood staff began stringing the lights for Christmas Tree Lane late in October, and planning for the display began even earlier.

Twenty-seven hundred poinsettia plants in pink, white and red dominate the

Conservatory Christmas Display, along with red Rieger begonias and a new Rieger cultivar, "Limelight," which has white flowers tinged with green. The poinsettias are grown at Longwood especially for the Christmas display, and some are very different from those sold in florists shops at Christmas. Because of the Main Conservatory's vast dimensions (the glass ceiling is well over thirty feet above the floor) a number of extremely tall plants are grown, their red and white "flowers" raised on four-foot stems above the Conservatory's green lawns.

In a small house near the Main Conservatory, Longwood's Department of Education has arranged a

display of Christmas decorations for the home, with suggestions for wreaths, door swags and table decorations that can be made at home. Most emphasize the use of natural materials in imaginative ways, and all make plain the

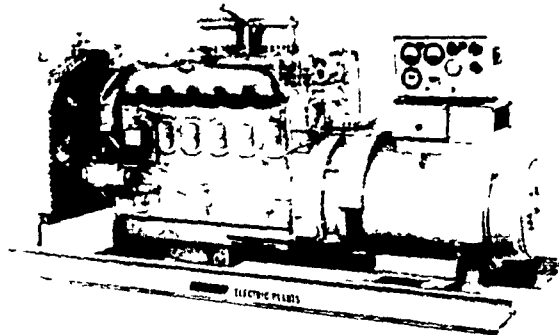
value of "I made it myself" Christmas decorations. The small boxwood Christmas tree studded with apples, the "kissing ball" tied with ribbon and mistletoe and the tiny owl ornaments made of pine cones will delight visitors of all ages.

Electric Generating Systems

Built to Your Specifications

Manual or Automatic

L. P. Gas — Diesel — Gasoline —



Sales - Service

Martin Electric Plants

Isaac W. Martin, Owner
Pleasant Valley Rd., RD2
Ephrata, PA (717) 733-7968

Co-op members view film

At the December meeting of the Adams-Franklin-York Council of Farmer Cooperatives, members reviewed a film entitled, "The Ways of Doing Business in a Democracy."

This 16mm color film was produced by the American Institute of Cooperatives as an educational tool to teach the cooperative way of doing business. The film was made available for the Council's review by Adams Electric Cooperative, Inc. The

Council was invited to make this program available to schools and service clubs in their local areas.

Attending the meeting were representatives of: Agway, Adams Electric, Cumberland Valley Cooperative, Interstate Milk Producers, Production Credit and Federal Land Bank of York, Eastern Milk Producers, Adams County and York County Extension Services.

Holy Night

For on this night a child is born and the angels sing. Joy be with you this Christmas.

KELLER BROS. TRACTOR CO.

949-6502 Buffalo Springs 949-6502
Route 419 Between Schaefferstown & Cornwall
Lebanon County

CHRISTMASTIDE

To follow the light of a star... to worship and to pray
...to give of our plenty to others... to share the joy of Christmas... these are the true gifts of Christmas... ours today as when the wise men sought a humble manger. May we treasure them always.

MESSICK FARM EQUIP. ELIZABETHTOWN 717 367 1319	C. B. HOOBER & SON INTERCOURSE 717 786 8231
COPE & WEAVER CO. NEW PROVIDENCE 717 786 7351	HERITAGE INTERNATIONAL, INC. 1054 S. State St. Ephrata PA 717 733 2283
SWOPE & BASHORE, INC. MYERSTOWN RD1 (Frystown) 717 933 4138	R. S. HOLLINGER & SON MOUNTVILLE 717 285 4538
INTERNATIONAL HARVESTER Oakwood Lane at Rt 873 Near Neffs (Schnecksville Pa.) 215 767 3806 or 437 4813	ERB & HENRY EQUIP. INC. 22 26 Henry Ave. New Berlinville PA 1 Mile North of Boyertown Phone 215 367 2169

LAMB'S FARM MACHINERY
Thorndale, Pa. 215-269-2676

Try A Classified Ad
It Pays!

WHO'S MINDING THE MILK?

If you depend upon your milk check for a living, who's minding your milk?

The least expensive, one-shot insurance you can get is the Sentinel — the 10-inch recorder which charts temperature of your milk-cooling or holding tank. Here's what it provides:

- Permanent proof that proper temperature was maintained.
- Record of cooling equipment efficiency.
- Cleaning temperature recording on the same chart.

The Sentinel is also available with provision for actuating an alarm or warning light if pre-set temperature is exceeded.

Remember — if it prevents the loss of only one tank of product, the Sentinel has paid for itself. It minds your milk.

See your dealer about the Sentinel — or drop us a line
P.O. Box 433
Elizabethtown, PA 17022