

CHESTER CO. DHIA

(Continued from Page 49)

Harry L. Griest									
49	GH	8-5	305	16,397	4.1	680			
James V. Yale									
3	GH	6-2	305	18,864	3.6	677			
Louis C. Neyman									
2	GH	5-11	305	15,623	4.3	674			
Harold R. Kulp									
Olive	GH	6-6	305	17,959	3.7	672			
Beauty	GH	6-0	305	17,184	3.6	611			
Mast Stoltzfus									
Peggy	RH	5-1	305	18,593	3.6	671			
Lulu	RH	5-2	292	16,137	4.0	644			
John R. Groff									
Rachel	RH	7-0	305	16,816	4.0	671			
Rose	RH	4-0	305	13,666	4.7	643			
E. E. Hershey									
17	RH	7-6	305	16,597	4.0	671			
Horace Prange									
Jewel	GH	5-3	305	21,282	3.1	664			
23	GH	5-7	305	15,435	4.2	641			
David Bartram									
23	GH	5-6	305	16,627	4.0	663			
Donald Speakman									
55	GH	5-9	305	13,966	4.7	658			

David Walton									
Zelda	GH	8-4	305	16,669	3.9	656			
Harnish Brothers									
Jill	RH	5-10	305	16,091	4.0	642			
Milton & Joyce	Edwards								
50	GH	12-5	281	16,807	3.8	633			
Landis S. Reid									
144	GH	5-6	305	15,725	4.0	633			
36	RH	4-5	305	15,725	4.0	633			
Paul M. Snader									
10	GH	6-7	249	14,194	4.4	631			
43	GH	3-2	305	16,258	3.8	623			
Vernon B. Burkholder									
Shelly	RH	5-4	293	17,837	3.5	627			
John E. Bruner									
2	GH	3-3	290	15,785	4.0	626			
Rothenberg Bros.									
27	GH	10-5	305	17,890	3.5	624			
Ronald F. Elliott									
78	GH	4-5	305	16,814	3.7	615			
Omer S. Smoker									
18	RH	5-0	305	13,705	4.5	615			
65	RH	9-1	281	16,764	3.7	612			
Evan Gill									
Betty	RH	2-2	298	16,171	3.8	614			
Dot	RH	4-6	305	19,225	3.1	601			
Mrs. John B. Hannan, 3rd									
109	GH	4-2	305	16,745	3.7	613			

Lancaster Farming, Saturday, Dec. 20, 1975—53

71	GH	5-3	305	16,934	3.6	611			
A. Richard Stauffer									
Opal	RH	4-4	292	14,629	4.1	606			
Allen S. Hoover									
34	RH	5-3	284	14,121	4.3	604			
Earl Mast									
Jan	RH	6-0	305	17,569	3.4	602			

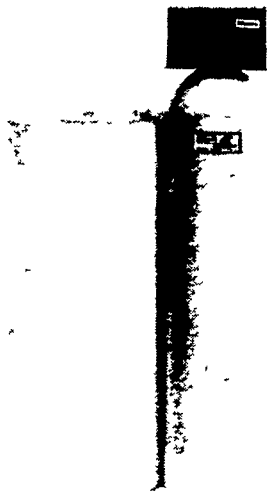


Leftover cooked potatoes are delicious in meat or potato patties, meat-pie topping, potatoes in cheese sauce, salads, and soups, stews or chowders

Myers

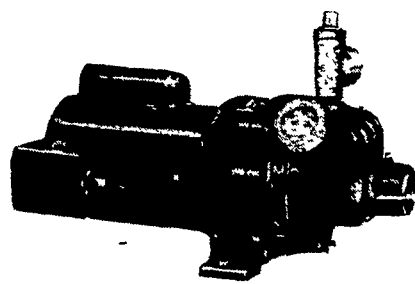
**PUMPS • TANKS
• PLASTIC PIPE •
• WATER CONDITIONERS •**

Before you select your water system, get the facts on the complete MYERS line.



WATER CONDITIONING
Fully Automatic or Manual, Cabinet or Free Standing, Two Tank Models.

WATER FILTERS
Solves objectionable water problems. Fully Automatic or Manual.



"EJECTO" PUMPS
(convertible) Shallow well — Capacities to 1800 GPH; Deep Well — Capacities to 1260 GPH with well depths to 180 feet.



SUBMERSIBLE PUMPS
(for 4" wells)
Capacities to 3400 GPH, well depths to 900 feet.

"Exclusive" 3 year Warranty from date of installation.



DISTRIBUTED BY: BEIBLE'S PUMP & SUPPLY

• (Main Office) 419-27 Dalton St. Emmaus, PA 18049 • (Branch) 1668 Wyoming Ave. Rt. 11 Forty Fort, PA 18704

AUTHORIZED MYERS DEALERS:

M.W. EISENHART
Center Valley, Pa 18034
PHONE (215) 282-3550

EARL F. KEGERISE, INC.
Pricetown Road
Fleetwood, Pa 19522
PHONE (215) 944-8532

LONGACRE ELECTRIC, INC.
Bally, Pa 19503
PHONE (215) 845-2261

PIKEVILLE IMPLEMENT SHOP
Oley, Pa 19547
PHONE (215) 987-6277

WILLIAM S. PHILLIPS HARDWARE
Route 1
Stein's Corner, Pa 18066
PHONE (215) 285-6290

RICHARD M. SCHAEFFER
SALES & SERVICE
Route no 1 Box 88
Lenhartsville, Pa 19534
Tel (215) 562-8362

SCHULTZ WELDING SHOP
Route 2
Easton, Pa 18042
PHONE (215) 759-1951

CLARENCE R. SEAMAN
Dauberville, Pa 19517
PHONE (215) 926-8341

FRANCIS L. SHIFFERT
Box 80
Palm, Pa 18070
PHONE (215) 679-7153

RICHARD B. SNYDER
5th St., Mountain Rd
Route 2
Emmaus, Pa 18049
PHONE (215) 965-9574

STEWART PLUMBING & HEATING CO.
420 State St
Hamburg, Pa 19526
PHONE (215) 562-7006

SHOLLENBERGER FARM SUPPLIES
4th & Pine St
Hamburg, Pa 19526
PHONE (215) 562-2005

WONSIDLER WELLDRIILLING, INC.
RD1 Box 252
Quakertown, PA 18951
(215) 536-5468

Refillable. Effective. Long-lasting.

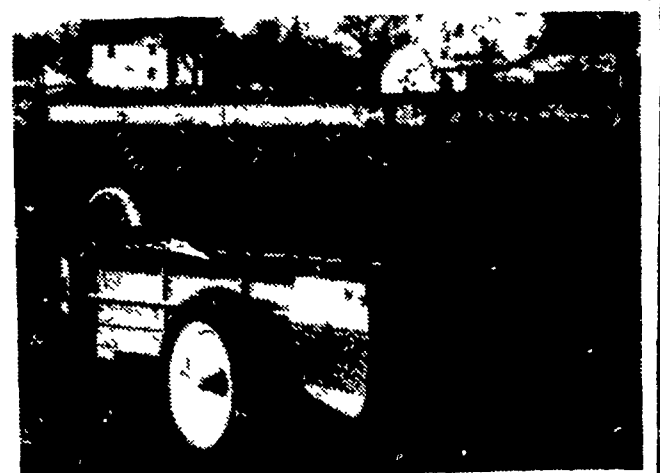
NEW pfizer dust bags



AARON S. GROFF & SON

FARM & DAIRY STORE

R D.3, Ephrata, Pa 17522 (Hinkletown) Phone 354-0744
Store Hours: 7 A M to 9 P.M.
Closed Tuesdays & Saturdays at 5 30 P M



3 easy ways to handle sloppy manure

New Idea spreaders offer you a choice of low-cost ways to handle sloppy manure.

Hydraulic Endgate. Fingertip control, uses standard 8" single or double acting cylinder. Hand crank available. Fits all 11 New Idea PTO spreaders.
Pan Attachment. Fits any New Idea single beater spreader. Lowest cost way to handle semi-liquid manure.

Mechanical Endgate. Fits any New Idea cylinder-paddle or flail spreader. Closes with hand crank, opens from tractor seat. Fits sung for loading and hauling.

All New Idea Spreaders are backed by the famous Warranty on Wood in addition to a Full Year Warranty.



YORK COUNTY

AIRVILLE FARM SERVICE
Airville, PA
717-862-3358

GEORGE N. GROSS, INC.
RD2 Dover, PA
717-292-1673

ANDERSON BROTHERS
New Park, PA
717-382-4272

CLAIR J. MYERS
RD1
Thomasville, PA
717-259-0453