

Education fund applications ready

Physicians income reported

HARRISBURG - State Health Secretary Dr. Leonard Bachman today released a report on fees private physicians charge for their services which indicates that health consumers pay "what the traffic will bear," that doctors are attracted to higher income counties and that an increase of MDs in any one county will not drive down the price of their services in Pennsylvania.

Bachman cited the report, prepared by Krishnan Ramaswamy, a health department biostatistician and researcher, "as an important study which points to the complexities involved in our present physician shortage and the health services delivery system.

"While we know there are other factors besides economics that enter into the health care picture and the total physician situation, this report provides us with a keen insight into some unique features involved in the pricing of physicians' services, the supply of doctors, the demand for their services, their productivity and what health consumers are spending on a yearly basis.

"Hopefully," Bachman said, "this economic study can be translated into finding new means to reach the health consumer who can't afford or find his way into the health delivery system."

Results of the study show:
-The general level of price per physician service in a country is determined, in part, by "what the traffic will bear;" which means that there exists a tendency with physicians to increase prices when the patient's ability to pay improves through higher income.

-Large increases in the number of physicians will not drive down the price of physicians' services due to their discretionary power to adjust their prices.

-The Medicare Program does not increase the price of physicians' services, rather it tends to decrease the prices, at least in short run, due to a fall in office-based physician supply and the prevailing lower income in such counties where a high percent of the population is on Medicare.

-The Medicare Program has a significant impact on the distribution of physicians across Pennsylvania's counties which probably means that a national health insurance program for all the population may help solve the problem of unequal distribution of physicians to some extent.

-Physicians are attracted to higher income counties and to counties where higher fees prevail in view of the potential for high incomes and greater amounts of leisure time.

-A county can increase its supply of physicians by increasing its volume of medical facilities, including addition of hospital beds.

-The quantity of service

produced per physician does not increase in response to higher prices of service or to a reduction in physician supply or to an increase in medical facilities available. (The word service here ranges from low cost office visits to high cost surgical services.)

1972 figures were used in the health department study and indicate that during that year the average computed income for a private physician in the State was \$76,657. During that year the highest county average in physicians' income was Monroe with \$132,631 compared to the lowest, Lackawanna, with \$32,854.

Per capita expenditures for office-based private physicians' services varied considerably across the counties. In 1972, such expenditures were \$149 per person in Monroe County compared with \$8.30 per person in Snyder County.

The price of a service physicians charged patients

in 1972 averaged a high of \$40 in Bradford County compared to a low of \$20 in Susquehanna, Pike, Wayne and Greene Counties, combined.

The percentage of the population in 1972 on Medicare enrollment included a high of 15 per cent in Pike and Wayne Counties and a low of 6 per cent in Bucks County.

The number of private physicians per 100,000 was 163 in Montgomery, Columbia, and Montour Counties compared to a low in Clarion and Forest Counties.

The average number of services offered by a private physician in 1972 reached a high of 4,560 in Monroe County compared to a low of 1,110 in Lackawanna County.

The average number of services in 1972 rendered by physicians for a person reached a high in Monroe County of 5.13 to a low of 0.31 in Clarion and Forest Counties, combined.

HARRISBURG - Rep. Kenneth E. Brandt, R-Lancaster, announced recently that he can supply students with 1976-77 State Higher Education Grant applications as well as Grant and Loan Brochures.

"I have just received 1976-77 Grant application forms to be used by students who have not received a State Higher Education grant for any portion of the 1975-76 school year and who are planning to attend a post-secondary institution and will need financial aid," Brandt said.

"I hope that all students who are in need of this State help obtain and file their applications as soon as possible.

"The rapidly increasing costs of education and the number of students applying within the established filing periods encumbers all the available funds provided for grant purposes, and therefore applicants who file after the cut-off date are seldom awarded funds."

Brandt explained that 1976 high school graduates who have indicated that they may enter a postsecondary school and students currently receiving a grant for any portion of 1975-76 school year will automatically receive an application for 1976.

"Filing deadline for grant assistance for 1976 high school graduates, all renewal applicants, and all others planning to enroll in a degree-granting program is May 1, 1976," he added.

The 98th District legislator

added that he also has brochures available for interested students and parents which explain Pennsylvania's higher education grant and loan programs.

"PHEAA provides grants for eligible students up to \$1,200 for use at Pennsylvania's educational institutions and \$600 for out of State College," Brandt said.

"Loans are awarded to eligible students up to \$2,000 for each academic year or a

total of \$7,500 during their undergraduate years. Graduate students can borrow \$2,500 per year.

"The pamphlet explains more fully assistance eligibility, application process and various deadlines for grant and loan programs. Persons interested in receiving these brochures or applications should write to me at: House of Representatives, P.O. Box 89, Main Capitol Bldg., Harrisburg, Pa. 17120.



FREE MEALS & GIFTS

4:00 to 7:30 P.M.

H. D. MATZ SPECIAL CHRISTMAS SALE

New Holland Sales Stables, Inc.

New Holland, PA

DECEMBER 12, 1975

100 Head of Top Purebred & Grade Cows

With Official Records. Sired by & bred to the top sires at the units. All animals guaranteed & cows sent on order. Also four purebred bulls out of record cows.

Sale of cows - 7:30 P.M.

H. D. MATZ

Henry Kettering, Pedigrees

AUCTION - FURNITURE AND ANTIQUES - SATURDAY, DEC. 13, 1975

10 A.M.

GUNNAR PETERSON FARM,

SMETHPORT, PA. OFF RT. 46 & 146, between Smethport and Emporium. WATCH FOR AUCTION ARROWS

Farm has been sold, must dispose of the following at auction:

2 Dinette Sets, Round Oak Table (5 Chairs and Buffet), Chest type Frefreezer, Smoking Stand, Mirrors, Baskets, Picture Frames, Wicker Chair, Davenport and 2 Chairs, Night Stands (1 handmade), 2 11x11 Rugs, Dryer, Maytag Wringer Washer, Gas Heating Stove, Sherman Jewel Wood Heater, Canning Jars, Coffee Pots, Birdseye Maple Chest of Drawers and Dresser, 2 Double Beds, 4 Single, Dresser, Electric Sewing Machine, Treadle Sewing Machine, Library Table, Storkline Double Drop Side Crib, Play Pen, 12" Bicycle, 6' Circular Pool, small Outdoor Swing, Christmas Decorations, 22x28 Restaurant Grill and Stand, 16 National Geographic, 48 Western Magazines.

Lots of Jugs (all sizes), Pitchers (several sizes and colors), Candle Holders, 4 Carnival Water Glasses, Paper Weights, real fancy Chamber Pot, lots of Odd Dishes, Oil Lamps (1 with brass bottom), R. R. Oil Can, Lantern Globes, R. R. Lantern with mirror reflector, Tobacco Tins, 1923 Country Gentleman Magazines, Radio, Insulators, 2 old Box Cameras, Coal Bucket, Old Wall Coffee Dispenser, Old Kendall Top for Gas Pump, Dash Crock Churn, Stands, Grindstone, School Seat, 2 R. R. Benches, 4' Wood Belt Pulley, Wash Board, Milk Can, Light Shades, 2 Leather Driving Horse Collars (like new), 3-Beam Handmade Bob Sled with Dog Thill, Cutting Box, lots of Blacksmith Tools, Tool Boxes, Porch Posts and Lattice Work, Shovel Plow, Walking Plow, Wooden Buckets, Medicine Cabinet, Bark Spud, Ice Tongs, Bucksaws, Wood Barrels (all sizes), Cast Iron Corner Feed Box.

Milk Can Winch, Tandem Wheel Trailer, 32' Extension Ladder, Post Malls, Elec. Fencer and Insulators, Go Devils, Picks, lot of Shovels, Forks, Mowing Machine Sickle Anvil, Climbers, Powder Wedge, Crowbars, Wheelbarrow, 160' Hay Rope and others, 100 Hand Sharpened Fence Posts, Metal Post, 5 15" Drain Tile, 90' 4" Drain Tile, 3-8" Gas Pipe, Barb Wire, Steel Drums, Side Racks for Pickup, Mortar Tubs, Buddy Thills, Neck Yokes, 3 Pipe Poles, 60' of 6" High Pressure Hose, Log Chains, Extra Hooks, 12x38 Tractor Chains (like new), Scythe, about 500' New Novelty Siding, Used Wainscoting, Hardwood Flooring, about 700' Plank (different widths), Timbers (various widths and lengths), 130' 3/4" Pipe, 2 Hand Tool Boxes, 15 7-gallon Pails, Gal. Cans, 3 Tarps (1 10x12), New Trowels, Paperhanging Brushes, Pioneer Chain Saw, Rubber Band Masticator, Veterinarian Syringe, Clay Flower Pots, Flour Bins, new All Channel Antenna, 150' 10" Shelving Material, 3 Work Benches (1 metal, 2 wood), 1969 Renault 4-door Sedan, and many, many other items too numerous to mention. Lots of Collector's Items!

SALE WILL BE HELD INSIDE

TERMS - CASH OR GOOD CHECK. LUNCH. Owner: Gunnar Peterson. Auctioneer: Si Pepperman 814-698-3431. Not responsible for accidents on premises. If you are interested in an auction - large or small - call this number. Remember, we let YOU decide!

FEESER'S 9TH BIG FRAMED HAMPSHIRE TESTED

PRODUCTION SALE

TUESDAY, DECEMBER 9, 1975

7:00 P.M.

SUPPER SERVED AT 6:00 P.M.

Located at the Lebanon Area Fairgrounds, Lebanon, Pa., 1 1/2 miles South of Lebanon on Rt. 72, turn left on Rockerty Road to Evergreen Rd.

20 HAMPSHIRE BOARS

32 HAMPSHIRE GILTS

25 COMMERCIAL GILTS

4 YORKSHIRE GILTS

1 DUROC BOAR

2 DUROC GILTS

SONORAY FIGURES

HAMPSHIRE BOARS	DAYS TO 240	BACK FAT	LOIN EYE
23-1	181	.83	5.65
23-3	192	.92	6.18
24-5	175	.82	5.90
27-2	169	.93	5.98
27-3	161	.83	4.97
27-5	162	.91	5.80
28-1	170	1.00	6.59
28-3	171	.88	5.92
28-4	169	.90	6.36
28-5	171	.98	5.47
28-6	170	.97	5.99
29-1	164	.83	5.64
30-1	167	.74	5.32
30-3	176	.90	6.80

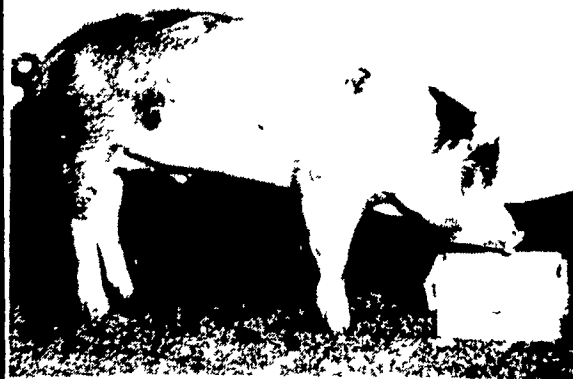
DUROC BOAR

DAYS TO 220

BACK FAT

LOIN EYE

1-1	136	1.96	5.08
-----	-----	------	------



For Catalogues and information call or write:

Franklin Feeser

Box 372
Taneytown, MD 21787
PH: 301-848-6280

Colorado

Colorado is the only state in the Union commemorating a centennial in the same year as the Bicentennial of the United States of America