

David Yoder honored

UNIVERSITY PARK - David Yoder, general manager of Atlantic Breeders Cooperative in Lancaster, has been awarded the "Honorary County Agent Award" during the annual meeting of the Pennsylvania Association of County Agricultural Agents, held at Penn State University recently.

This recognition is made each year by the County Agents' Association to a person who has made an outstanding contribution and given support to the Extension Program in Pennsylvania, the College of Agriculture, and Penn State University.

The honor, and accompanying "bullskin" award was presented to Yoder by Lancaster County Extension director, M. Maxwell Smith, who was elected secretary-treasurer of the Association of County Agricultural Agents.

Born in Indiana, and spending most of his boyhood on an Ohio farm, Yoder is a 1942 graduate of Bluffton College (Ohio) with a degree in biological science. He has been manager of ABC, and one of its forerunners, SPABC, since November of 1944. When SPABC and WPABC merged in 1964 to become Atlantic Breeders, Yoder became general manager.

Among the achievements and work which earned Yoder the recognition of being named an "Honorary County Agent" was his support for PSU's Dairy

Breeding Research Center and specifically the work of Dr. John Almquist, world-renowned geneticist, who heads the Center. Yoder is also recognized for his activities in the National Association of Animal Breeders (NAAB), in which he is currently serving a second term as president.

A past president of the Pennsylvania Association of Farmer Cooperatives, the award recipient has been, and continues to be active in a variety of professional and community organizations. Currently, he is chairman of the Agricultural Committee of the Lancaster Chamber of Commerce, and serving on the Rural-Urban Committee of the Lancaster Northeast Rotary Club.

Nominated by Lancaster County Extension Director, Max Smith, Yoder was described as "an enthusiastic supporter of the total Extension effort. He is always willing to help any of the extension agents and is well respected throughout the dairy industry in the state. If there is an Extension program that needs support, we can always count on David Yoder and Atlantic Breeders Cooperative."

Smith noted that Yoder introduced the "Twilight Dairy Meetings" throughout his territory as a popular method of presenting educational practices, public relations, and good fellowship.

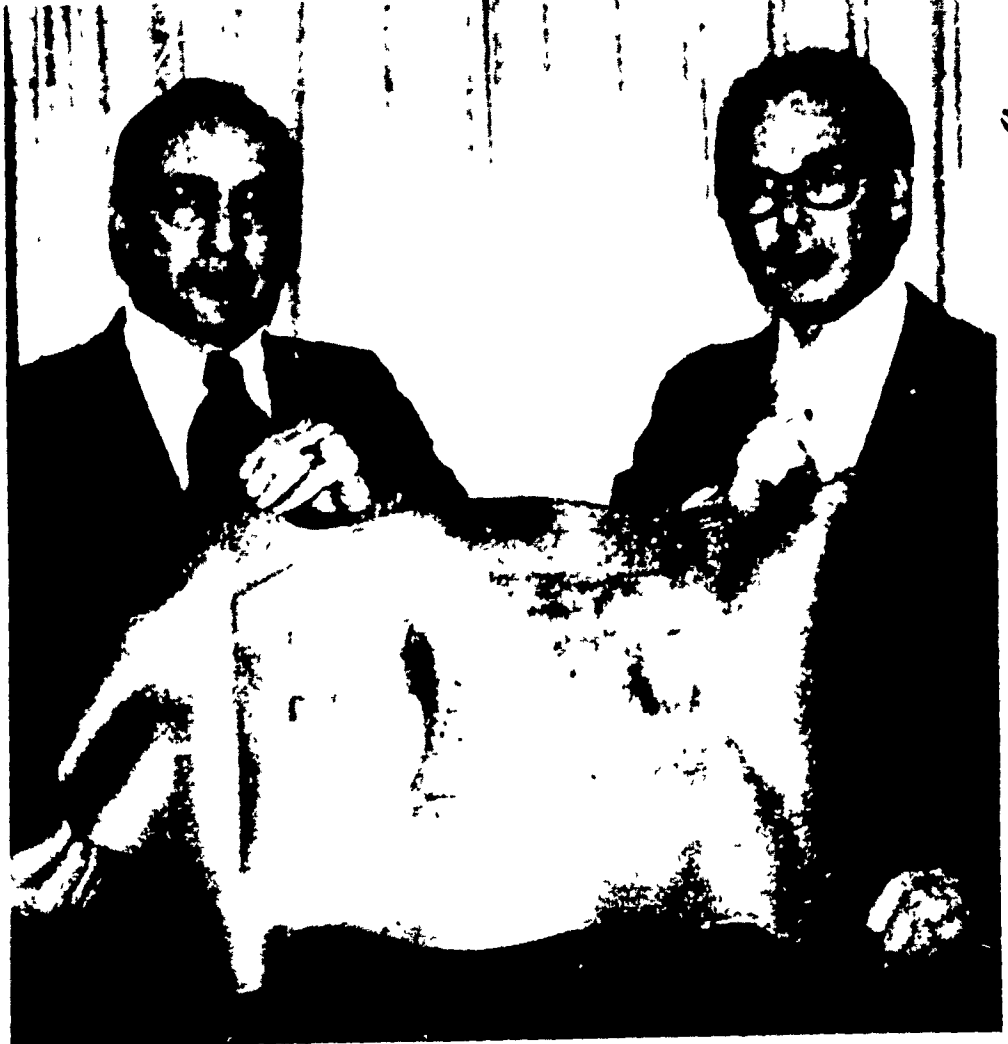
Yoder was cited for his support of "hundreds" of 4-H programs and leadership abilities which have guided

not only ABC, but various dairy programs as well. Among these programs are county and district shows, judging events, County Dairy Days, and district DHIA meetings. Many of these events were supported by ABC with money and personnel, Smith pointed out in his nomination speech. The Dairy Days, in particular, provide the Extension Service with opportunities to contact large groups of people with minimum effort, the Extension director claimed.

"During his 31 years in Pennsylvania," Smith said, "Dave has been a strong manager, and without his enthusiastic support and the subsequent selling of an idea to his board of directors, we doubt that the organization would have been as generous and as helpful to Penn State and our Extension Service."

In the Fall of 1973, Yoder was presented a Certificate of Appreciation from Penn State for his work on behalf of Atlantic Breeders Cooperative which supported educational and research efforts at the University. His work within the NAAB and other AI circles in support of sire analysis work done by extension specialists throughout the U.S. are highly regarded.

In addition to these accomplishments, Yoder has also served on the board of directors for the Pennsylvania Young Farmers Association and as a director for the Pennsylvania All-American Dairy Show Committee.



Dave Yoder (right) receives recently named as an Honorary bullskin from M. Max Smith, Lancaster County Agent. Yoder was

Pa. reaches quota for Farm Bureau

PARK RIDGE, ILL. - A new Farm Bureau membership record of 2,505,258 member families has been reported by Roger Fleming, secretary-treasurer of the world's largest farm organization. The 1975 increase of 111,527 marks the fifth consecutive year that membership has increased in excess of 100,000 members and the fifteenth consecutive year of increase.

Leading the way in this

banner membership year was Kentucky with a gain of 24,523 member families. This is the fourth largest state membership gain in Farm Bureau history surpassed only by the 1921 gains of Indiana, Iowa and Ohio. Pennsylvania recorded

one of the highest membership enrollments during 1975 and reached its quota along with several other eastern states.

The Keystone State also established a new all time membership high in the organization.

HOG PRODUCERS!

Get Top Price for Your Hogs at New Holland



Sold in sorted lots the auction way. See them weighed and sold and pick up your check.

SALE EVERY MONDAY 9:00 A.M.

NEW HOLLAND SALES STABLES, INC.

Phone 717-354-4341
Daily Market Report Phone 717-354-7288
Abe Diefenbach Manager

TRY A CLASSIFIED

Dust off a lousy problem



with **RABON®** Livestock Dust

CONTROLS WINTER LICE

- Direct dusting on dairy and beef
- Safe for lactating dairy cows
- Convenient 12 1/2 lb Cartridges for use in hand or power dusters.

AVAILABLE FROM YOUR LOCAL FEED & FARM SUPPLY DEALER

Serviced by New Holland Supply Co.

QUALITY from top or bottom

Harvest haylage, silage, or high moisture ground corn. VIBRA-COR staves provide additional strength and insulation.

- Low maintenance cost
- Leasing plans available

DEALER NAME
ADDRESS
PHONE

Madison Silos Division Office
P O Box 271, Madison, Wisconsin 53701



Madison Silos Division Office, P O Box 271, Madison, Wis. 53701

MADISON SILOS
Div. Chromalloy American Corp
1070 Steinmetz Road
Ephrata PA 17522
Phone 733 1206

FRANK SNYDER
Akron 717-859-2688

LANDIS BROS. INC.
Lancaster 717-393-3906

CALEB WENGER
Quarryville 717-548-2116

CARL L. SHIRK
Lebanon 717-274-1436

SOLLENBERGER FARM SUPPLY
Centerport 215 926-2722

THE WORLD'S LEADER IN CHAIN SAWS MODELS FROM 2 to 16 H.P.

STIHL 020 AVP ELECTRONIC

FREE DEMONSTRATION
Chain Saw — Concrete & Metal Saw Rentals

A & B SALES & SERVICE

2 Miles South of Route 23 Along 772 thru Monterey RD1 Ronks, PA

DAVE'S ENGINE SERVICE

In Rear of Stauffer's Machine Shop
1/4 Mile South of Murrell on Pleasant Valley Road R D 3, Ephrata, PA