

Poultry Market Reports

Weekly New York Egg Market

Monday, November 24 to Friday, November 28

	Mon.	Tues.	Wed.	Thurs.	Fri.
WHITE					
Ex. Large	71	71	71		71
Large	69	69	69		69
Mediums	63	64	64		66
Pullets	57	58	58		60
Pee-wees	36	37	37		39
BROWN					
Large	71	71	71		71
Mediums	Unquoted				
Pullets	Unquoted				
Pee-wees	Unquoted				

	Mon.	Tues.	Wed.	Thurs.	Fri.
Off Grade					
Large	64	64	64		64
Checks	40	40	40		40

Tone — Large sizes about steady. Balance firm.
Copyright 1975 Urner Barry Publications

Fogelsville

Sale of
Tuesday, November 25
Prices paid dock weights, cents per pound, except where noted.
Hens, heavy type 10-21, mostly 14-17; Pullets 20-49, mostly 45-48; Roasters 35-58, mostly 43-49; Capons 54-65, mostly 58-62; Ducks 34-61, mostly 45-53; Drakes 33-61, mostly 50-58; Geese 40-59; Turkeys - Toms 43; Turkeys - Hens 48-57; Rabbits 70-75½, mostly 66-72; Guineas 1.00; Pigeons (per pr.) 1.28-4.45.
Total coops sold 650.

Sale of
Monday, November 24
Hens, light type 9; Hens, heavy type 14-19, mostly 15-17; Pullets 45-48; Roasters 45-46; Capons 45-63, mostly 59-63; Ducks 45½-52; Drakes 50-53; Geese 42-55; Turkeys - Toms 43; Rabbits 72-76; Guineas 1.00; Pigeons (per pr.) 1.20-3.50.
Total coops sold 236.

Directions — Take Rt. 22 thruway. Exit at Fogelsville. Exit North to stop lite in Fogelsville, turn left, proceed one block, turn left again at Cracker Barrel Restaurant. Auction right side 100 feet from your last left turn.

Delmarva

Broiler-Fryer Market
Wednesday, Nov. 28
Ready to cook movement fair to good for weekend needs. Slaughter schedules about steady. Advance interest very active at sharply higher prices than this week's levels. Today's less than trucklot asking prices 1-2 cents higher on both plant and US Grade A. Live supplies fully adequate at weights in a wide range. Undertone very firm.

Negotiated trucklot prices 2-3 lb. ready to cook broiler-fryers for delivery next week: US Grade A 44-46; Plant Grade 43-45.

Current Broiler - Fryer negotiated prices for immediate delivery mostly multiple - drop shipments to New York City from Delmarva.

Range: US Grade A 42-44, Plant Grade 41-43, Premium US Grade A 45-49, Premium Plant Grade 44-47.

Wtd. Avg.: US Grade A 43.31, Plant Grade 41.90, Premium US Grade A 48.97, Premium Plant Grade 46.93.

New Holland Horse

Monday, Nov. 24

Reported receipts of 355 horses, mules and ponies. Market reported steady.

Load of Tennessee riding and driving horses; driving 300-900; riding 210-380; load of New York riding horses 165-310.

Local work horses 340-500; mules 200-260; better horses 260-460; driving horses 175-375; riding horses 150-240; lightweight killers 16-18; heavyweight killers 23-25; mares 15-40; colts 5-20; geldings 15-35 and larger ponies 50-80.

New England Weekly Shell Egg Report

Tuesday, November 25, 1975

Prices paid per dozen Grade "A" brown eggs in cartons delivered to retail stores:

	EX LARGE	LARGE	MEDIUM	SMALL
MASS+	74-84	72-82	67-78	56-64
Mostly	75-77	73-75	68-70	57-59
NEW HAMP	72-79	70-77	65-72	54-61
Mostly	74-75	72-73	67-68	56-57
R.I.	78-79	76-77	71-72	60-61
VERMONT	76-83	74-80	69-75	-
Mostly	76-80	74-78	69-71	-
MAINE	76-78	74-76	69-71	58-60

+ Includes Central & Western Sections Only.

Baltimore Eggs

Wednesday, Nov. 28

Prices 1 cent higher for mediums, unchanged on large. Demand fair to good. Supplies adequate. Moderate offerings are available for next week.

Cartoned Egg; Prices to Retailers:
Large 73-76; Medium 68-71.

Eastern PA & NJ Live Hen Report

Wednesday, Nov. 28

Prices unchanged on Light type hens. Demand is good for light offering. Offerings of Heavy Type Hens short of a fair call.

Light type hens 8-10½, mostly 9 to 10 in both Pa. and N.J. Heavy type hens TFEWR.

NEST RUN EGGS

Prices are from Egg Clearinghouse, Inc., (ECI) Durham, N.H. and reflect trading prices for gradeable nest run eggs (GNR) on ECI, a nationwide trading center for producers, packers and marketers. GNR eggs are classified by weight in 30-dozen cases, and traded in lots of either 300 or 750 cases. Prices are FOB buyers dock, and are computed Tuesday and Thursday of each week. This week's prices for each classification were:

Classification	New Weight Per Case	Tuesday Friday	
		Tuesday	Friday
Extra Large	51 lbs.	0	0
Class 1 - Large	48 lbs.	59	59
Class 3 - Medium	42 lbs.	55	56
Class 4 - Small	39 lbs.	43	43
Breaking Stock	48 lbs.	48	48
Checks	48 lbs.	41	41

Philadelphia Eggs

Wednesday, Nov. 28

Prices unchanged to higher on mediums, N balance unchanged. Cartoning demand fair to good especially on mediums. Offerings of extra large and large adequate, mediums adequate to barely adequate. Undertone Steady.

Prices to retailers: Sales to volume buyers, Consumer

grades White Eggs in Carton, Delivered: Store Door:
A extra large 74-75½, A large 73-74½, A medium 64½-68½.

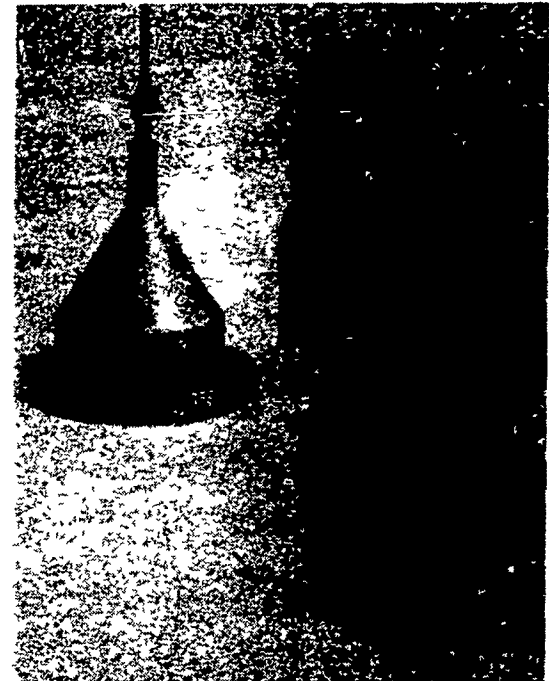
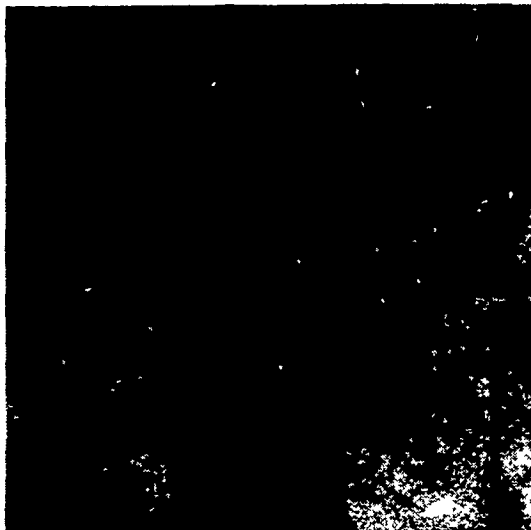
READ LANCASTER FARMING FOR FULL MARKET REPORTS



PUT WATER WHERE IT'S NEEDED

WATERMASTER 3

Moulded from polyethylene for ease of cleaning and maximum life. The Watermaster 3 has been designed for use by broilers, pullets, layers and turkeys from day-old onwards.

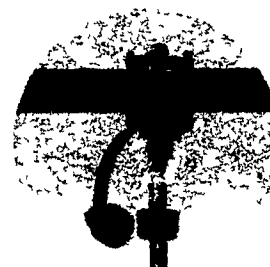


The special anti-perch shape prevents birds from fouling the drinker and in this, the big brother of the world renowned Watermaster 2, the 15 in diameter offers greater drinking space. The valve system is extremely simple to ensure continuous water supply. The large flat filter is easily removed for cleaning and all fittings are self-sealing with no 'O' rings or washers needed. Watermasters are supplied complete with the BEC saddle connector, 10ft. of tubing and suspension. The recommended stocking rate is 10 to 14 waterers per 1000 birds.

The specially designed protective ring for day-old birds is ideal for turkeys, breeding stock and rearing pullets. The water ballast gives excellent stability without making waterers too heavy to handle.

The Bec 75 Waterer:

1. Takes up less room in the house-more room for the birds.
2. Its distribution that counts - more drinking points, for the same money, means that the birds have less distance to walk to water.
3. Lighter and more convenient to handle and clean.
4. At the end of the crop, easy to empty house - one person can carry 50 to 100 waterers.
5. Easy Connections: a) Saddle connector (see inset). b) Tube fittings (see inset). c) new easy method of raising and lowering the waterer with hanger box.



Saddle Connector



Side Outlet

WE SELL, SERVICE AND INSTALL



MODERN POULTRY SUPPLIES, INC.

JAMES J. ENCK
OFFICE: 1044 EAST KING STREET
LANCASTER, PENNA. 17602

717-299-0828

WAREHOUSE (PICKUP):
752 EAST ROSS STREET
LANCASTER, PENNA. 17602

717-397-5850



P.O. Box 266 - Lititz, PA 17543

Office: 22 E. Main St., Lititz, PA 17543
Record-Express Office Building

Phone: Lancaster 717-394-3047
or Lititz 717-626-2191

Dieter Krieg, Editor
Melissa Piper, Associate Editor
Jack Farmakis, National Sales Manager

151 Danforth Drive
New Canaan, Conn. 06840
Ph. 203-966-1746

Subscription Price - \$3 per year.

Established November 4, 1955

Published every Saturday by Lancaster Farming
Lititz, PA

Second Class Postage paid at Lititz, PA 17543

Members of Newspaper Farm Editors Assn Pa Newspaper Publishers Association, and National Newspaper Association