

# Guernsey breeders honored

[Continued from Page 1]  
 improved by 1000 pounds in the past year.  
 Jane McSparran, president of the County 4-H Guernsey Club, thanked the members for their support to

the 4-H program over the past year and told the audience that "their help had been much appreciated."  
 The youth related the winners in Guernsey com-

petition during the showing season. "We were very pleased at doing so well in the many shows attended."  
 "We were especially honored at receiving the top county Guernsey award at the Junior All American Show."

Noting that one member of the Guernsey association had been honored by the Dairy Shrine Club, Alan Bair, associate county agent, expressed his wish in keeping producers interested in such dairying activities.

"Peter Witmer was honored this year by the Dairy Shrine Club," Bair noted, "and we were certainly happy to have him represent this county."

"Dairy activities such as these are important in keeping young people interested in dairy farming for the future."

Bair also related some topics which had been covered during an extension program at Penn State held earlier this month.

He noted that research at Penn State in the area of

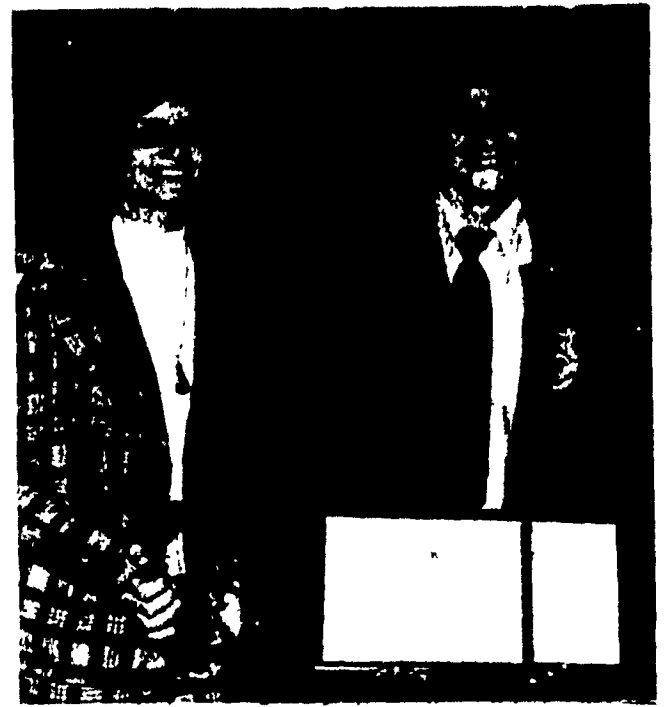
dairying seems to offer much promise.

One topic most universal to all dairymen was the idea of synchronizing cows for breeding purposes. Bair noted that by continuing research it may be possible, in the future, to synchronize a group of cows so that they can be bred at the same time and place.

Bair also related that high producing cows need a good protein balance in their rations. He noted that even a 17 percent protein in the cow's diet may lead to higher production and keep producers at a higher level of maintenance.

"While research is always giving us something," Bair explained "we still have to look at the basics."

"We have a long way to go and I encourage you to continue improving your herds."



Mildred and Axel Linde, Kirkwood, hold the awards presented to their family for outstanding DHIA accomplishments throughout the past year. The children's parents Mr. and Mrs. K. D. Linde have a herd of Guernseys in the southern Lancaster county area.

**WHY RE-TIE ANOTHER BALE?**

THE TWINE WITH THE EXTRA HIGH KNOT STRENGTH



**EXTRA HOLLAND BALER TWINE**

- the ball with the wooden plug
- 9,000' and 10,000'

MADE FROM NO. 1 EAST AFRICAN FIBER THE FINEST AVAILABLE

**EARLY SEASON DISCOUNTS ORDER NOW**

**P. L. ROHRER & BRO., INC.**

Smoketown, Pa. 717-299-2571

**BRUNING PAINT**

"A Quality Paint For Every Purpose"

- Engine Sales & Service
- Lawn Mower Sharpening
- Hydraulic Units.

**JOHN Z. LAPP**

Centerville Road  
 RD1, Gordonville, Pa. 17529

## Interstate

[Continued from Page 1]

sound leadership sets proper goals which are legally and practically attainable." This, he noted, establishes the form of the organization and then provides the tools with which that organization can achieve its goals.

"You are a vital part of Inter-State's leadership," Dr. Honan told the cooperative members. "Also every member, director and employee is a part, and this team, working together, has brought Inter-State where it is today."

## 4-Hers attend fair

Thirty-five Pennsylvania 4-H members, all with dairy projects, participated in the Royal Agricultural Winter Fair, recently in Toronto, Canada.

The 4-H members were selected to take part in the Canadian event of the basis of their high placing in the state dairy judging contest or a demonstration presented at State 4-H Days

at the Pennsylvania State University in August.

Sponsor of the trip was the Eastern Milk Producers Cooperative.

The Royal Agricultural Winter Fair is the leading agricultural fair in North America and the largest indoor event of its kind in the world. Twenty-five countries compete annually for numerous prizes in 23 different contest divisions.

# Parade of the Profit-Makers

These Plus-Proven Sires Are Available Daily For Your Dairy Herd:



**15H161 Kanawaka EDUCATOR**  
 Very Good & Gold Medal; PQ[9/75] & TQ[5/75]  
 USDA (Sept./75) — 33 Daus. in 10 Herds Ave. 17,033M 3.72% 633F  
 Predicted Difference (49% rpt.) +381M +\$21 +1F  
 Type: 19 Pr. Classified Daus. Ave. 83.4; +1.12 PDT  
 Sire: Quin-Lynn Triune Prince — VG(88) & GM  
 Dam: Kanawaka Burkgov Lucky Mandy — EX



**15H144 Howacres STYLEMASTER Prince**  
 Very Good & Gold Medal; PQ[9/75]  
 USDA (Sept./75) — 369 Daus. in 214 Herds Ave. 15,186M 3.52% 534F  
 Predicted Difference (93% rpt.) +488M +\$29 +4F  
 Type: 60 Classified Daus. Ave. 78.3; 48 Pr. -.30 PDT  
 Sire: Banella Stylemaster — VG & ST  
 Dam: Howacres Gypsie Phylis — EX-3E & GM

**135 DAIRY SIRES ARE NOW AVAILABLE THROUGH OUR PROFESSIONAL TECHNICIAN SERVICE!**

**Atlantic**  
 LIVESTOCK SERVICES BREEDERS COOPERATIVE

Member — NAL Affiliated Breeders

24-Hour Toll-Free Phone Service:

Lancaster area 569-0411  
 throughout Pennsylvania 800-732-0391  
 Delaware & Maryland 800-233-0216

