



NOV. 17-23, 1975

Moon disappears this week.

Drive in all loose nails about the house. JFK assassinated Nov. 22, 1963. Full moon Nov. 18. Also, total Lunar Eclipse Nov. 18. The beginning will be visible in the northeastern part of North America and the end in all of North America except western part. The middle of the eclipse will occur at 6:24 PM, EDT. Average length of days for the week, 9 hours, 35 minutes. Use not today what tomorrow may want.



Home Hints: Save those plastic tubs that soft margarine comes in. On trips use them to store damp paper towels in the glove compartment for cleaning sticky fingers. Riddle answer: A sponge.

OLD FARMER'S WEATHER FORECASTS

**New England:** Generally clear to start, with slight warming and some showers in north by midweek; sunny and seasonal latter part, but still showers in north.

**Greater New York-New Jersey:** Week begins clear and sunny, then very cold, continuing fair and a bit warmer through weekend.

**Middle Atlantic Coastal:** Sunny and dry at first, with a cold spell midweek, week ends continued sunny and near normal temperatures.

**Piedmont & Southeast Coastal:** Temperatures moderating first part of week, then fair skies and seasonable, warmer latter part, then light rain at week's end.

**Florida:** Early week showers and warmer, then rain, locally heavy in south, rain continues over area, locally heavy in central and north, then warm weekend.

**Upstate N.Y.-Toronto & Montreal:** Continued cold, partly cloudy and sunny at first, then some light showers, variable, scattered light rain latter part.

**Greater Ohio Valley:** Mostly sunny and seasonable through week, dry and warmer than normal over weekend.

**Deep South:** First part of week continuing fair with warm days and moderating nights, latter part clear and warm in north, rainy with thunderstorms in central and south.

**Chicago & Southern Great Lakes:** Partly sunny, seasonable and occasional light showers to start, week ends sunny and warmer than normal.

**Northern Great Lakes:** Indian summer weather throughout most of week, except for some scattered light showers in east by end of week.

**Central Great Plains:** At first clear and warm, cooler in north, then hailstorm in central, clear and unseasonably warm latter part.

**Texas-Oklahoma:** Week begins sunny and warm, then scattered showers and thunderstorms, clear and warm in north, some showers and thunderstorms in central and east latter part.

**Rocky Mountain:** Much warmer to start, then light rain in northwest, gradually spreading to central and south, clearing and warm in central and south, light rain in east and northwest and snow on mountains.

**Southwest Desert:** Clear and warmer through midweek with highs in 80's in west, 70's in east, end of week becoming slightly cooler, but still clear and dry.

**Pacific Northwest:** Light rain all week, becoming fairly heavy in south midweek, snow in mountains, lighter rain in south and above-normal temperatures latter part.

**California:** Moderate rainfall coastal and north to central, light snow south.

(All Rights Reserved Yankee, Inc. Dublin N.H. 03444)

St. Louis Auction

Nov. 13

Weekly Cattle Review:

Receipts this week 9,200; week ago 9,500; year ago 9,400.

Compared to Tuesday last week, Slaughter Steers steady to 50 higher, slaughter heifers largely steady. Cows 1.50-3.00 higher than late last week, Bulls steady to firm. Supply Good and Choice 950-1150 lb. Steers YG 2-4 with near 20 percent Heifers, 30 percent cows and the balance largely feeder cattle.

**SLAUGHTER STEERS:** Three part loads Choice including Prime 1075-1150 lbs. YG 2-4 45.50-46.00 on Monday. Choice 900-1150 lbs. YG 2-4 43.50-45.50, closing mostly 44.00-45.50. Mixed

Good and Choice 900-1150 lbs. 42.00-44.00. Good 900-1200 lbs. 38.00-43.00. Two loads mostly Good Holsteins 1250 lbs. 40.00-40.25. Standard and Good 1000-1300 lbs. 33.00-39.00.

**SLAUGHTER HEIFERS:** Part load Choice including Prime 975 lbs. YG 3-4 44.25 on Monday. Choice 800-1000 lbs. 43.00-44.50, several loads 44.00. Mixed Good and Choice 40.00-43.00. Good 800-1000 lbs. 36.00-40.00. Two part loads Standard and Good 575-660 lbs. YG 2 28.00.

**COWS:** Utility and Commercial closing 21.50-23.50, few 24.00. Cutter 18.00-22.00. Canner and low Cutter 16.00-20.00.

**BULLS:** Yield Grade 1-2 1100-1700 lbs. 22.00-26.00.

Omaha Auction

Nov. 13, 1975

Weekly 51 - cattle - compared with previous weeks close -

Closing prices slaughter steers steady to 25 cents higher. Heifers balanced out mostly steady, instances 25-50 cents lower late. Cows 1.50-2.00 higher and bulls firm.

Four day receipts 16,400 as compared 15,100 previous week and 17,800 a year ago. Steers made up approximately 23 pct. weeks total, heifers 27 pct, cows 12 pct, and feeders fully 35 pct. Fed cattle prices advanced 50-1.00 initial session in a rather forced trade as supplies substantially reduced by a general day-long rain over trade territory on Sunday. Early advances quickly erased on later sessions, however, as marketings expanded and carcass prices further declined. In view of continued bearish conditions surrounding carcass immediate requirements. Steer supply not particularly attractive with predominance good to average-choice. In contrast, the heifer crop included a rather liberal percentage of choice grade and A moderate number mixed choice and prime.

**STEERS:** Choice 100-1225 lbs. yield grade 2-4 45.00-46.00 early. At midweek, choice 975-1225 lbs. yield grade 2-4 44.25-45.50, some mostly choice 950-975 lbs. yield grade 3 44.00. Mixed good and choice 950-1200 lbs. 43.00-44.25. Good 39.50-43.00. Standard and low-good 37.00-39.00.

The average of Ls-214, detailed quotations, for choice 900-1100 lb. steers this week 44.75, choice 1100-1300 lbs. 45.38.

**HEIFERS:** Early, two loads and part load choice and prime 925-1000 lb. yield grade 3-4 45.25-45.40. At midweek, four loads same grade 1000-1025 lbs. yield grade 3-4 44.00-44.50. Choice 850-1050 lbs. yield grade 2-4 closed 42.50-44.00, mainly 42.50-43.50. Mixed good and choice 800-975 lbs. 41.50-43.50. Good 34.00-39.00. Small lots standard and good 29.00-32.00.

**COWS:** Utility and commercial 20.50-23.00, a few high-utility and commercial 23.25-23.50. Canner and cutter 15.50-21.00, mixed cutter and low utility 21.25-21.50. Shelly canner 13.00-15.00.

**BULLS:** Yield Grade 1-2 1300-1800 lbs. 23.00-26.50, few yield grade 1 27.00-28.00.

Martinsburg Auction

Martinsburg, PA  
November 10, 1975

**CATTLE 255.** Compared with last Monday's market, slaughter cows \$1 to \$2 higher. Few Good slaughter steers 42.25-45.75, Standard 31.50-39.00. Few Good slaughter heifers 32.50-35.25, few Standard 23.00-30.50. Utility & High Dressing Cutter slaughter cows 22.10-24.75, few Commercial 25.25-26.50, Cutters 19.50-22.75, Canners 16.25-19.50, Shells down to 12.00. Few Good slaughter bullocks 32.50-34.75, few Standard 27.00-28.85, few Utility 20.00-23.75. Few Yield Grade No. 1 1050-1720 lbs. slaughter bulls 26.00-28.85. Few Choice 400-680 lbs. feeder steers 29.50-33.75, Good 500-700 lbs. 27.50-29.25, Medium 300-700 lbs. 21.00-27.50; Choice 300-680 lbs. feeder heifers 25.00-30.50, Good 300-800 lbs. 20.00-24.00; few Good & Choice 300-680 lbs. feeder bulls 23.75-

27.00, Medium 300-500 lbs. 17.00-23.00.

**CALVES 334.** Vealers mostly steady to \$2 lower. Choice vealers 50.00-60.00, Good 40.00-47.50, Standard 30.00-40.50, Utility 90-110 lbs. 19.00-23.50, 70-85 lbs. 15.00-20.00. Farm calves, holstein bulls 90-115 lbs. 22.00-30.00; few holstein heifers 90-110 lbs. 19.00-22.50.

**HOGS 314.** Barrows & Gilts \$3.50 to \$4 higher. One lot US No. 1-2 205 lbs. barrows & gilts 54.30, No. 1-3 200-245 lbs. 53.60-54.10, No. 2-3 190-250 lbs. 53.10-53.70, few No. 2-4 250-300 lbs. 49.10-52.80. US No. 1-3 300-570 lbs. sows 44.50-50.25. Boars 27.50-34.00.

**FEEDER PIGS 97.** US No. 1-3 20-35 lbs. feeder pigs 16.00-31.00 per head, No. 1-3 35-50 lbs. 31.00-47.00 per head.

**SHEEP 11.** Few Choice 80-100 lbs. woolled slaughter lambs 38.00-45.50, few Good 80-85 lbs. 33.50-35.00.

Local Grain

Friday, Nov. 14

These prices are made up of the average prices quoted by a number of participating local feed and grain concerns. It should be noted, however, that not every dealer or broker handles each commodity. All prices are per bushel except ear corn which is per ton.

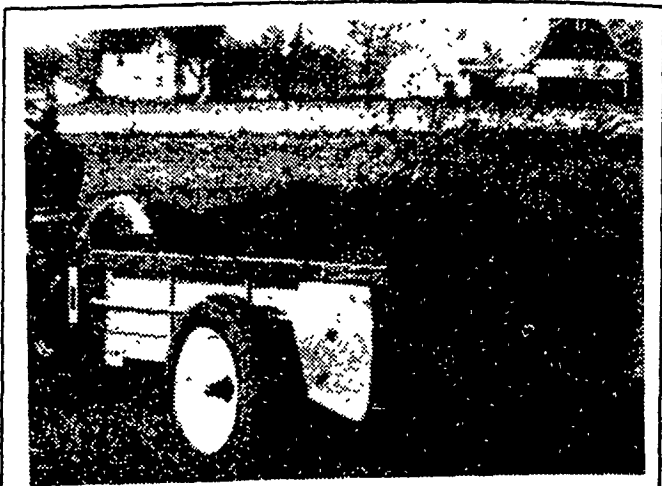
The average local grain prices quoted Thursday, July 24, 1975 are as follows:

	Buy+	Sell+
Ear Corn		
Old	69.00	73.50
New	49.00	57.00
Shelled Corn	2.42	2.65½

Oats	Local	1.44½	1.65½
Western	1.75½	1.89	
Barley	1.72	1.94	
Soybeans	4.28		
Wheat			
Millers	2.96	3.17½	
Feed	2.10		

+Buy is the price the dealer will buy from the farmer delivered to the mill. Sell is the price the dealer will sell for at his mill.

TRY A CLASSIFIED



3 easy ways to handle sloppy manure

New Idea spreaders offer you a choice of low-cost ways to handle sloppy manure.

**Hydraulic Endgate.** Fingertip control, uses standard 8" single or double acting cylinder. Hand crank available. Fits all 11 New Idea PTO spreaders.

**Pan Attachment.** Fits any New Idea single beater spreader. Lowest cost way to handle semi-liquid manure.

**Mechanical Endgate.** Fits any New Idea cylinder-paddle or flail spreader. Closes with hand crank, opens from tractor seat. Fits sung for loading and hauling.

All New Idea Spreaders are backed by the famous Warranty on Wood in addition to a Full Year Warranty.



YORK COUNTY

AIRVILLE FARM SERVICE  
Airville, PA  
717-862-3358

GEORGE N. GROSS, INC.  
RD2 Dover, PA  
717-292-1673

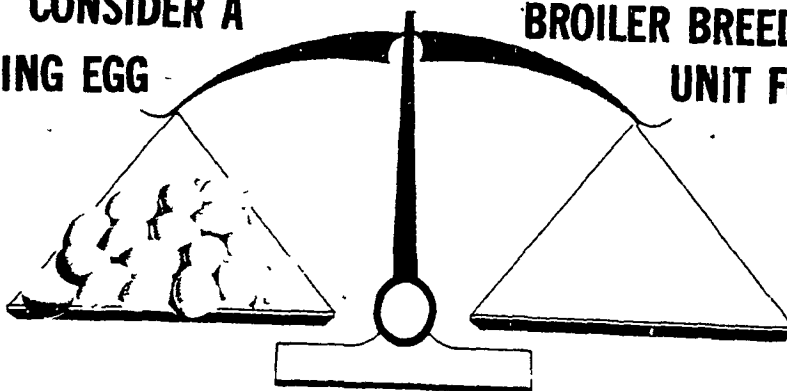
ANDERSON BROTHERS  
New Park, PA  
717-382-4272

CLAIR J. MYERS  
RD1  
Thomasville, PA  
717-259-0453

BALANCE THE SCALES IN YOUR FARM OPERATION

CONSIDER A HATCHING EGG BROILER BREEDER UNIT FOR

HATCHING EGGS



PRESENT FARM OPERATIONS

LONGENECKER'S HATCHERY INC.  
ELIZABETHTOWN, PA

LONGENECKER'S HATCHING EGG UNITS ARE SPECIALLY DESIGNED FOR EFFICIENT OPERATION.

CONTACT

EARL GERLACH - 717-367-1545  
TODAY