

# PACA and Consumers ally

Since marketing costs take a big share of the consumer's food dollar, it's vital that products move rapidly from the farm to retail foodstore.

For perishables like fruits and vegetables, keeping costs down and quality up is especially important. The risks of marketing are great

for these products. Everyone with a stake in a produce deal takes a chance that he may not get the money he expects.

Helping him get the payment he deserved, cut the risk, and speed delivery of these perishables is a Federal law - the Perishable

Agricultural Commodities Act (PACA). Administered by USDA's Agricultural Marketing Service, the PACA establishes a code of good business conduct for interstate marketers of fresh and frozen fruits and vegetables.

It also sets up machinery for preventing and settling the disputes that inevitably arise in this fast-moving, heavy-risk business. PACA officials work with both buyers and sellers in mediating their disputes, often helping them to arrive at informal agreements promptly so that each load of produce can move without delay through marketing channels on to consumers.

More than 900 such informal "reparation" disputes were amicably settled during fiscal year 1975 (July 1, 1974, to June 30, 1975,) resulting in payment of nearly \$6 million to the persons making claims. PACA officials also furnish producemen advice to their marketing transactions in more than 15,000 instances, enabling them to avoid disputes.

While the bulk of produce disputes handled by AMS are settled informally, some must be settled through a

more formal procedure under PACA. Most of these result in an order being issued by USDA, requiring the buyer to pay the amount he owes the seller for produce purchase.

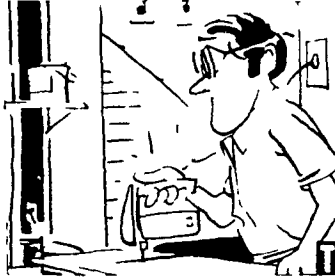
In fiscal 1975, USDA issued some 300 formal orders under PACA, ordering payment of about \$1-1/2 million to the produce shippers and others who filed complaints.

## Hints for HOMEMAKERS

Tested Tips To Help You

### CUTTING COSTS

What's the hardest job you ever saw? If you'd like to save money on household repair jobs by doing them yourself, you might have to saw some thing as hard as metal. But first you have to have tools cut out for that kind of work. Many home repair experts say that the best sort of saw to help you get your teeth into the really tough jobs is an electric sabre saw. It's considered the most versatile power saw, since it can cut straight like a circular saw



and still cut circles around any saw that can cut in circles.

With the proper blade it will cut plaster plastics as best as plywood and even metal. Some sabre saw blades come coated with Teflon to keep them from binding. Many are designed to cut their own way through hard material so you don't have to drill first. And Coastal Abrasive & Tool Co., a major source of sabre saw blades in the U.S. even makes a blade that has teeth all around—to cut in any direction—as well as 20 other kinds of blades.

You can get a free sabre saw blade sample from Coastal Abrasive & Tool Co., P.O. Box 337, Trumbull, Conn. 06611 as well as more information on sabre saws. Then you'll see why many say that the sabre saw is a cut above the rest.

# Cumberland 4-H'ers schedule sale

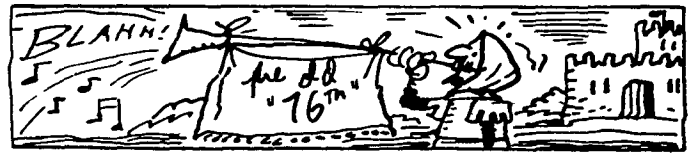
The annual sale of steers and market lambs raised by Cumberland County 4-H members has been scheduled for November 18. To be held at the Carlisle Livestock Market beginning at 8:00 p.m., this is the 18th year that Cumberland County 4-H'ers have held their own sale of steers. Prior to 1957, 4-H steers were sold in an area sale which was held at the Lancaster yards. This will be the first year, however, that lambs will be sold in the county sale.

The sale marks the culmination of projects which began last summer with lambs and last March with steers. All projects animals except those

selected for Farm Show participation will be sold - this will involve 24 steers and approximately 13 lambs. The grand champion and reserve champion steer and lamb will be sold at the beginning of the sale with other animals sold at random within the special sale order.

A pre-sale show or round-up will be held at 9:30 a.m. the day of the sale. Dr. Les Burdette, Penn State University will make the placings of steers and lambs at that time. Anyone interested in seeing the show is invited to attend.

Persons interested in more information about the special 4-H sale should contact the Agricultural Extension Office in Carlisle 249-7220.



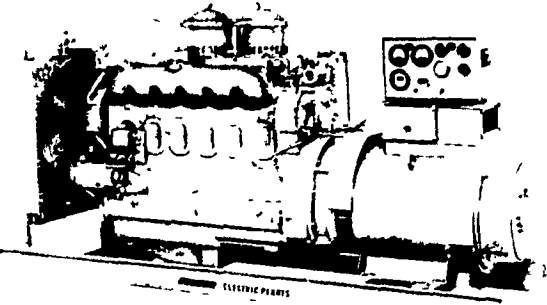
In the British Army, the men of the 76th foot were called "The Immortals" because so many were wounded, but not killed, in India (1788-1806)

## Electric Generating Systems

Built to Your Specifications

Manual or Automatic

L. P. Gas — Diesel — Gasoline —



Sales - Service

## Martin Electric Plants

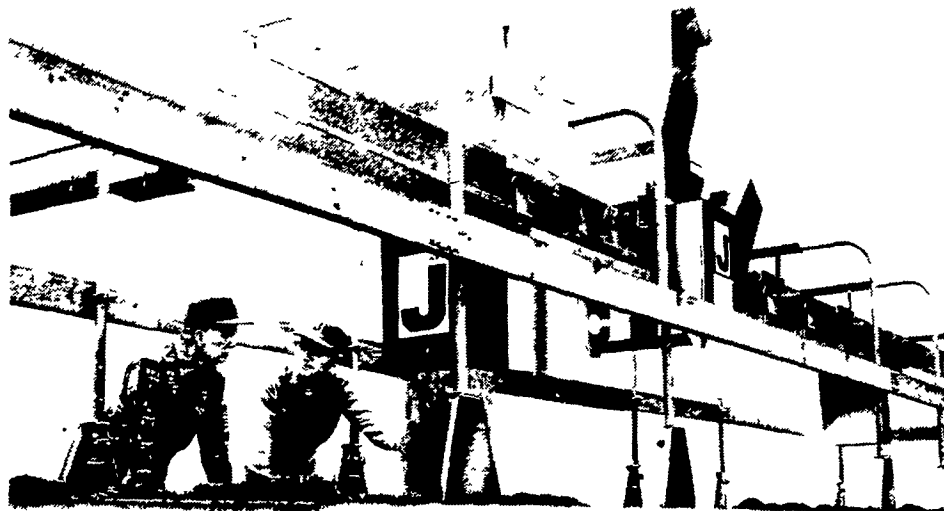
Isaac W. Martin, Owner

Pleasant Valley Rd., RD2

Ephrata, PA (717) 733-7968

Look neighbor . . . you can

# BELT IT OUT FAST



Feed fast and quiet — no feed separation with a Jamesway<sup>®</sup> Volume-Belt<sup>®</sup> cattle feeder.

Stop In Today for Free Catalog.

## YOU CAN COUNT ON US

### AGRI-EQUIP.

RD2 Farmersville Ephrata PA  
717-354-4271

### ROY O. CHRISTMAN

RD1 (Shartlesville) Hamburg PA 19526  
215-562-7218 or 215-488-1904

### DEPENDABLE MOTOR CO.

East Main Street Honey Brook, PA  
215-273-3131

### ERB & HENRY EQUIP., INC.

22 26 Henry Avenue New Berlinville PA  
215-367-2169

### GRUMELLI FARM SERVICE

Robert Fulton Highway, Quarryville, PA  
717-786-7318

### WEAVER STAR SILO INC.

RD4, Myerstown PA  
717-866-5709

### I. G.'s AG. SALES

Rt 113 Box 200 Silverdale PA  
215-257-5135

### LANDIS BROTHERS INC.

1305 Manheim Pike  
Lancaster PA 717-393-3906

### HENRY S. LAPP

RD1 Gains Gap PA 17527  
717-442-8134

### CARL L. SHIRK

5 Colebrook Road Lebanon PA  
717-274-1436

### M. E. SNAVELY

455 South Cedar Street Lititz PA  
717-626-8144

### M. S. YEARSLEY & SON

114 E Market St  
West Chester PA 19380 215 696-2990

# GLICK'S

Distributor for

## ROOFING & SPOUTING

## BAKED ENAMEL TIN ROOFS

Colors: Turquoise, Red, White

### ALSO BAKED ALUMINUM

Colors: Green, White, Tan, Red.

FULL SERVICE DEALER  
SALES & INSTALLATION

# SAMUEL B. GLICK

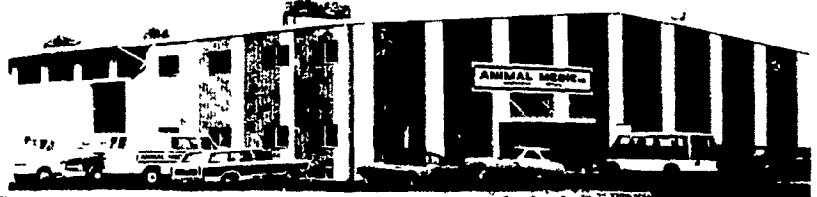
R.D.1, Kinzer, PA

Ph. (717) 442-4921

Please call before 7 A.M.

or after 6 P.M.

## ITS ANIMAL MEDIC FOR ANIMAL HEALTH



## COUPON

**SAVE NOW . . . WHEN SAVINGS ARE MORE IMPORTANT THAN EVER.**

### TRIPLE SULFA BOLUS WITH ELECTROLYTES

Reg. \$13.95 per box of 50  
Now only with this Coupon \$8.95

Quan \_\_\_\_\_ Amt. \_\_\_\_\_

### "NEW" TERRAMYCIN 100

(Pfizer) Use 1/2 the dosage of regular  
Terramycin Injectable. Reg. \$17.50 per 50cc

Now only with this Coupon \$9.95

Quan \_\_\_\_\_ Amt. \_\_\_\_\_

At participating Animal Medic Dealers or send cash with coupon & order to ANIMAL MEDIC, INC., P.O. Box 575, Manchester, PA 17345.

Remember, you save more at ANIMAL MEDIC and your satisfaction with all purchases is GUARANTEED! Quantities Limited. Offer void after November 30, 1975.

## COUPON