

Herrs-Brubakers show winning sheep at Expo

HARRISBURG - Several Lancaster County sheep producers captured outstanding awards here on Tuesday morning during the Keystone Livestock Exposition. Dr. and Mrs. Robert Herr, Narvon, exhibited the grand champion Dorset ewe lamb during the event. The lamb was the first champion the family had shown at the contest. The family's Dorset ram yearling lamb placed second in its class

being edged out of the first place spot by a Penn State entry.

In the fall ewe lamb class, the Herr's showed three animals in the top ten places with their daughter Barbara placing 14th with her animal. In spite of keen competition, the family's pen of three Dorsets placed fourth in the class also.

In the junior market lamb class four youths from Lancaster county placed in the top 20 entries. Richard

Strauss, Ephrata R1, had the 3rd place animal with Sarah Brubaker, Lancaster capturing 6th with her entry. Chris Herr placed 7th with his sister Elizabeth taking 8th and 11th.

Neighbors across the county, the Clyde Brubaker family also took several awards with their Hampshire sheep.

The Brubakers placed 4th with their Hampshire pen of three ram lambs and also exhibited the 6th and 10th

place ram spring lambs. Sarah Brubaker, took 11th place in the Fall lamb class with her parents placing 16th with their entry.

Kenneth Brubaker had 13th place ewe spring lamb with his parents following closely by having the 15th place animal in the same class. The Brubakers also had the 7th place pen of three ewe lambs.

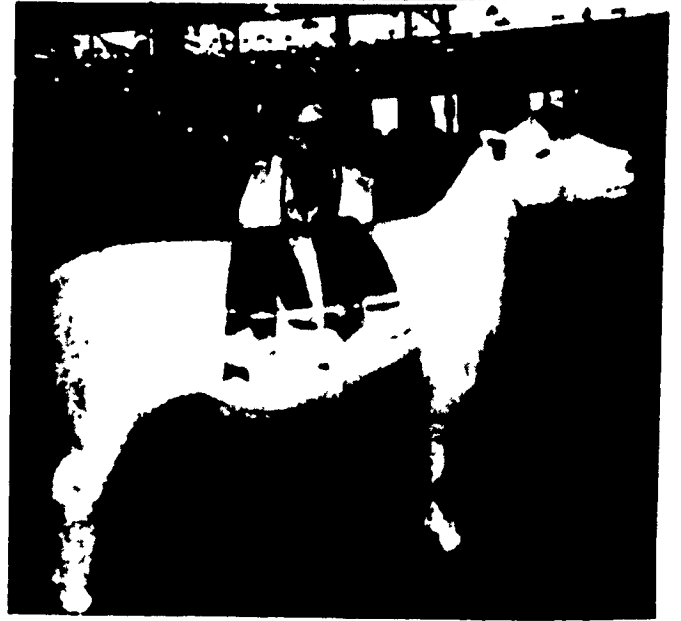
The Brubakers reside at 2418 Old Harrisburg Pike in Lancaster. Sarah, age 15, and Kenneth, 17, both members of the Red Rose Baby Beef and Lamb Club in the county.

Mrs. Milton Morgan, New Holland Pike, Lancaster exhibited the 15th place bred ewe in the Suffolk class.

In the wether carcass class, Henry Showalter, Akron had the third place animal.

Penn State dominated the Dorset class by having the champion ram and reserve champion ram.

Lancaster Farming, Saturday, Nov. 15, 1975-17



Mrs. Robert D. Herr, Narvon, is shown with the family's Dorset yearling ewe that was selected as the grand champion of the breed.

Start next year's corn fertility this Fall.

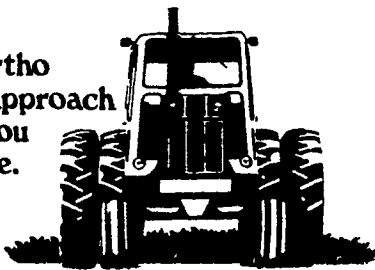


Fall plowdown puts fertilizer in nature's best storage—your soils. It gives you a head start on next year's corn-yield and corn-profit goals.

Once over the field this Fall to apply a complete Ortho fertilizer—with N, P & K—can wrap up next year's corn fertility program. You capitalize on more and better working days in the Fall . . . on firm ground, more workable soil . . . and cooling soils that carefully nurture crop nutrients to feed the corn you plant next Spring.

High fertility levels are essential to high corn yields. Ortho Fall plowdown is good insurance on both.

The Ortho team approach helps you produce.



CHEVRON
ORTHO

Chevron Chemical Company

P. L. ROHRER & BRO., INC.

Smoketown, PA

717-299-2571



Sheep make "really neat pets" or so says young Stephanie Kocher, Mansfield. Stephanie was visiting the Exposition with her parents on Tuesday.

Cumberland girl is wool queen

HARRISBURG — Julie Borst, 17, of RD Newville, Cumberland County, was named the 1975 Pennsylvania Lamb and Wool Queen Saturday (Nov. 8) at the 19th Keystone International Livestock Exposition at the Farm Show.

Julie, a senior at Big Spring High School won the Saturday night event wearing a long red wool skirt, a white blouse and red vest. Runner-up among the four contestants modeling all-wool outfits was Debbie Black, 17, a Avella, Washington County.

The Lamb and Wool Queen contest is sponsored by the Pennsylvania Sheep and Wool Growers Association.

As the year's reigning queen, Julie will represent the association throughout the year in an attempt to promote the sale of wool and lamb in the Commonwealth. She will appear as one of the commodity queens at the Governor's Farm Show Preview January 4.

Though a runner-up in the Lamb and Wool Queen contest, Debbie Black took top honors in the Ladies Lead Class event Sunday (Nov.9).

TRY A CLASSIFIED

POLE STRUCTURES

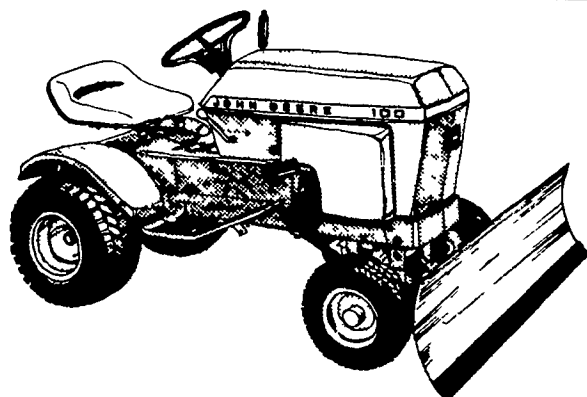
FARM • URBAN • COMMERCIAL

Thrive Center
ENVIRONMENTAL BUILDINGS
• Gestation • Farrowing
• Nursery/Finishing

HUSKEE-BILT
Construction Co.
For Information Write or Phone



MERVIN MILLER
R D 2 LITITZ PA
626 5204



Lawn Tractor with Snow Blade

Keep on top of winter weather with a John Deere Lawn and Garden Tractor with front-mounted blade. The tractor is available in seven models, from 8 to 19.9 horsepower. The capacity-matched blade comes in sizes 40 to 54 inches wide and has the muscle you need for any snow removal chore. Steel box-beam construction. Angles left or right. Protective rubber "cutting edge" available.

LANDIS BROS. INC.
Lancaster 393 3906

ADAMSTOWN
EQUIPMENT INC.
Mohnton, RD2, Pa 19540
[near Adamstown]
Phone (215) 484 4391

A. B. C. GROFF, INC.
New Holland 354 4191

BEYER'S HARDWARE
Christiana, PA
Ph: (215) 593-5687

COLLINS MOTORS
RD1 Elizabethtown
Phone 367-1856

GOODMAN'S AUTO SERVICE
Honey Brook, PA
(215) 273 2356

NEW VOCO FARM WHITE For Interior Farm Buildings

VOCO II IS THE PROVEN WHITEWASH THAT IS NATURALLY ADHESIVE.

VOCO II is NOT A LIME whitewash.

VOCO II will not flake or scale off.

VOCO II dries white.

APPLIED BY:

RICHARD R. FORRY & SON

Spraying

2020 Horseshoe Road
Lancaster, PA

Phone 717-397-0035

We are also equipped to serve you with modern equipment in all your areas of crop spraying