

Livestock market and auction news

Pa. Auction Summary

Harrisburg, PA
Week Ending
October 31, 1975

CATTLE 6956. Compared with 7863 head last week, and 5965 head a year ago. Slaughter steers uneven, averaging steady. Slaughter heifers 50 cents to \$1 higher. Slaughter cows steady to 75 cents lower. Slaughter bullocks 50 cents to \$1 lower. Slaughter bulls steady to \$1 lower. **STEERS:** Few High Choice and Prime 50.75-52.25, Choice 44.00-51.00, Good 40.00-46.50, Standard 30.75-40.30, Utility 24.75-31.50. **HEIFERS:** Choice 38.00-47.00, Good 32.50-40.00, Standard 27.00-33.25, Utility 22.00-28.60. **COWS:** Utility and High Dressing Cutter 23.00-26.00, Cutters 20.50-24.00, Canners 17.00-22.00, Shells down to 12.00. **BULLOCKS:** Choice 36.50-38.50, Good 30.50-37.50, Standard 25.00-30.50, Utility 21.75-25.85. **BULLS:** Yield Grade No. 1, 1000-1700 lbs.

28.00-32.00, Yield Grade No. 2, 950-1600 lbs. 22.00-29.00. **FEEDER CATTLE:** Few Choice 500-750 lbs. steers 30.25-38.25, Good 300-750 lbs. 24.00-31.00, Medium 15.00-25.00. Good 300-700 lbs. heifers 16.75-26.00, Medium 300-750 lbs. 15.00-23.00. Good 300-750 lbs. bulls 19.00-25.00, Medium 300-700 lbs. 14.00-22.00.

CALVES 5052. Compared with 4965 head last week, and 4294 head a year ago. Vealers mostly \$1 to \$2 lower. **VEALERS:** Few Prime 64.00-69.00, Choice 51.00-62.00, Good 40.00-52.00, Standard 29.00-40.00, Utility 110-130 lbs. 25.00-31.00, 90-115 lbs. 19.00-31.00, 70-85 lbs. 14.00-24.00. **FARM CALVES:** Few Holstein bulls 90-115 lbs. 23.00-35.00.

HOGS 6483. Compared with 7525 head last week, and 6557 head a year ago. Barrows and gilts fully \$3 to \$4 lower, spots \$5 lower. Few US No. 1-2 200-240 lbs. 56.50-

58.00, No. 1-3 200-250 lbs. 55.00-56.50, No. 2-3 190-260 lbs. 53.00-55.00, No. 2-4 240-300 lbs. 49.00-54.00, No. 1-3 150-190 lbs. 46.00-53.00. **SOWS:** US No. 1-3 300-575 lbs. 43.00-52.00, No. 2-3 280-600 lbs. 40.00-45.75. **BOARS** 37.00-45.00.

FEEDER PIGS 2014. Compared with 1722 head last week, and 1432 a year ago. US No. 1-3 20-35 lbs. feeder pigs 17.50-40.00 per head, No. 1-3 35-50 lbs. 27.00-51.00, No. 1-3 500-100 lbs. 36.00-50.50, Utility 20-60 lbs. 10.00-28.00 per head.

SHEEP 813. Woolled slaughter lambs 50 cents to \$1.50 higher. Compared with 906 head last week, and 1075 head a year ago. **WOOLED LAMBS:** Choice 70-115 lbs. 40.50-46.00, Good 60-100 lbs. 31.00-40.50, Utility 40-75 lbs. 24.00-30.00. Slaughter ewes 5.00-19.00.

Lancaster Feeder Cattle

Fri., Oct. 31, 1975

Feeder Cattle

Today 1268
Last Friday 317

TREND: Feeder steers and feeder bulls 50-1.00 lower. No comparable trend on feeder heifers.

FEEDER STEERS: Choice 630-800 lb. 34.00-36.50; mixed Good and Choice 550-960 lb. 31.00-34.50; Good 28.00-30.50; mixed Good and Choice 400-550 lb. 26.75-32.25; Good 380-550 lb. 22.00-28.25; Standard and low Good 400-800 lb. 18.50-20.50.

FEEDER HEIFERS: Load Choice 505 lb. 21.75; Good 450-570 lb. 16.00-18.75.

FEEDER BULLS: Couple lots Choice 700-725 lb. 22.75-24.25; Good 400-500 lb. 16.00-20.50.

Leesport Auction

Leesport, Pa.
Nov. 5, 1975

CATTLE 289. Supply included 101 head feeder cattle. Compared with last Wednesday's market, slaughter steers steady to \$1.50 higher. Slaughter cows 50 cents to \$1 lower. Good & Choice slaughter steers 45.00-47.00, Good 42.00-45.50, Standard 32.00-40.00, Utility 25.00-28.60. Choice slaughter heifers 38.25-44.00, couple Good 30.25 and 32.75, Standard 22.25-29.00. Utility & High Dressing Cutter slaughter cows 21.85-25.00,

Cutters 20.25-22.75, Canners 16.60-20.50. Standard slaughter bullocks 25.35-30.25, few Utility 21.25-24.25. Few Yield Grade No. 1 1225-1715 lbs. slaughter bulls 28.85-29.60. Few Choice 400-830 lbs. feeder steers 29.00-31.50, Good 370-600 lbs. 24.00-29.00, Medium 300-800 lbs. 14.75-20.50; Good & Choice 380-600 lbs. feeder heifers 16.00-19.00; Good & Choice 400-670 lbs. feeder bulls 23.25-27.00.

CALVES 168. Vealers uneven. Few Choice vealers 52.00-56.00, Good 40.00-52.00,

Standard 28.00-40.00, Utility 110-130 lbs. 23.50-30.00, 90-110 lbs. 19.00-23.50, 70-85 lbs. 16.00-20.00.

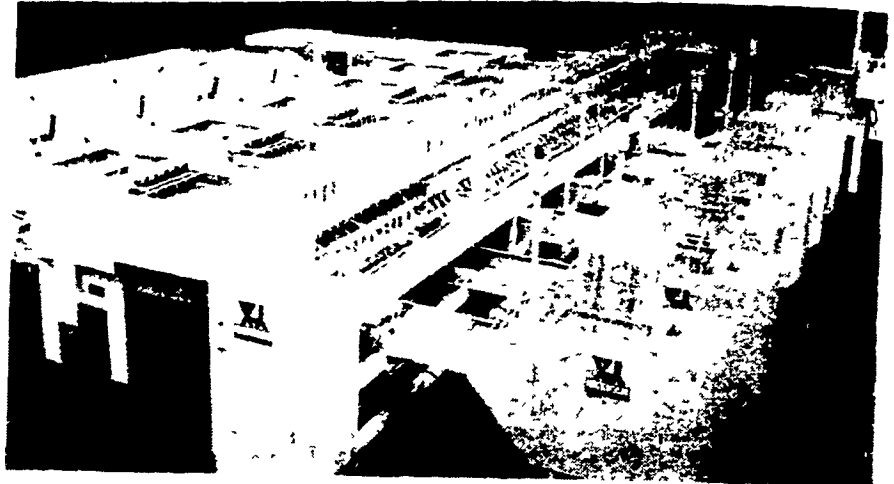
HOGS 189. Barrows & Gilts \$3 to \$3.25 lower. US No. 1-3 205-235 lbs. barrows & gilts 52.75-53.25, No. 2-3 195-245 lbs. 51.25-52.75, No. 2-4 250-280 lbs. 52.00-52.75. US No. 1-3 300-500 lbs. sows 41.50-49.00. Boars 30.00-38.25.

FEEDER PIGS 111. US No. 1-3 20-35 lbs. feeder pigs 14.50-22.00 per head, No. 1-3 35-50 lbs. 24.00-35.00, one lot No. 1-3 80 lbs. 39.00 per head.

SHEEP 11. Few Choice 70-90 lbs. woolled slaughter lambs 40.00-46.00.

Staalkat

SUPER 70 CASE COMPACTA



The Staalkat Super Compacta is designed for automatic grading and packing of eggs. The Super Compacta has a 70 case per hour capacity which is easily controlled with minimum personnel.

Staalkat is also a manufacturer of quality packers and egg graders for any size operation.



Hershey Equipment Co. Inc.

215 DILLER AVE.
NEW HOLLAND, PA 17557
PHONE 717-354-4576



If you have fat
cattle or
need feeders . . .

**THINK
NEW HOLLAND**

BEEF SALES

MONDAY 2:30 P.M.

THURSDAY 12:00 NOON

Sale Order - Fat Bulls, Steers, Stockers, Beef
Cows and Veal Calves

NEW HOLLAND SALES STABLES, INC.

Phone 717-354-4341

Daily Market Report Phone 717-354-7288

Abe Diffenbach, Manager

Field Representatives - Bob Kling 717-354-5023

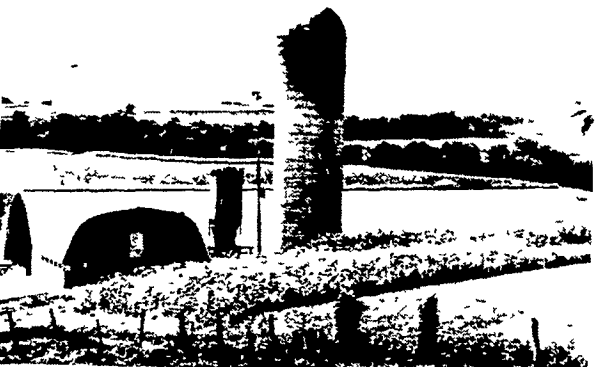
Luke Eberly 215-267-6608

'meets all
our needs
perfectly..'

Dairyman AUSTIN BECK located in York County, Pennsylvania has been pleased with his new 50x 180 foot, 100 Cow Free Stall Barn and Milking Parlor constructed of Rigidply Laminated Rafters.

"Our Free Stall Barn has proven to be completely satisfactory for handling cows. I could not have built anything else that would have met our needs better."

Call for Information
On Your Requirements



RIGIDPLY RAFTERS, INC.

(717) 866-6581

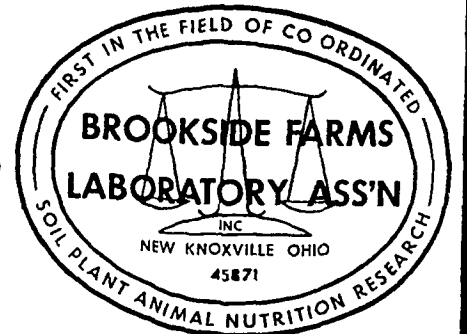
Linden Street/Richland RD1, Pa. 17087
Oakland RD2, Md. 21550/(301) 334-4626

YOU ARE INVITED

TO A

**SOIL FERTILITY &
TILLAGE MEETING**

Sponsored By . . .



— AND CONSULTANTS: —

STUART HARNISH

Pottstown, PA
(215) 469-6396

JOHN CAMPBELL

Atglen, PA
(215) 593-5529

This will be a most important meeting for you as you plan for 1976 and the years to come.

WE URGE YOU TO COME AND BRING AN INTERESTED FRIEND!

LOCATIONS:

TUES., NOV. 11
7:45 P.M.

OWEN J. ROBERTS
HIGH SCHOOL
Jct of Rts 23 and 100 in
Bucktown, PA

THURS., NOV. 13
7:45 P.M.

BECHER'S
ST. PETERS CHURCH
[One of the Twin Churches]
RD2, Fleehood, PA

FRI., NOV. 14
7:45 P.M.

WILLOW VALLEY
FARMS RESTAURANT
Willow Street Pike,
Lancaster