

Lititz woman named farm society president

By Sally Bair
Feature Writer

Mrs. Robert Gregory, Lititz R1, is beginning her first year as president of the Society of Farm Women of Lancaster County, following her election to the post at their annual convention on Saturday. As county president, Mrs. Gregory will preside over the 31 societies in Lancaster County.

In an interview prior to her formal election, Mrs. Gregory talked about the role of the farm women societies

and the impact they have on members lives. She said, "Basically the women come together for a social and educational time. It offers one opportunity for women to participate in their communities."

Another real opportunity provided by the societies, Mrs. Gregory said, is an "intermixing of people." The women are of different faiths and of different political affiliations." She added, "A good portion of the members live on farms and a lot have husbands who make their living in agri-business. Basically the women share an

interest in the home. Farm women may hold as their goal the preservation of family life and the family unit."

The societies contribute to women as individuals, too, Mrs. Gregory said. "Everybody needs a certain amount of companionship and can gain from some group activity." Because of our mobile society in which families are often distant, Mrs. Gregory says, "Women are more keenly aware today of the need to belong to an organization than when the relatives are near. Many times the societies can be like an extended family."

Mrs. Gregory stressed that many members belong to various other organizations, and use the society as "an extra interest group. Educationally and socially it is a relaxed type of friendly group."

She says the local groups serve a very specific purpose in community projects. Societies have individual projects ranging from fulfilling health needs to helping to pattern a handicapped child.

But each year the county board, over which Mrs. Gregory will preside, selects one county project in consultation with the local societies. This year they contributed \$2,000 to the Farm and Home Center Foundation, for instance. Mrs. Gregory said, "Each society gives as they see fit. Some have more opportunity than others for raising money."

Mrs. Gregory has no grand plans for the county societies, but she has one hope as she takes over as president, "I would really like to see the farm women do something in relation to the Bicentennial celebration. Many individuals may be involved in their individual communities, but I think perhaps we should plan an observance, perhaps a social event. I feel we should contribute something."

A farm women member for 12 years, Mrs. Gregory is a member of Society 3. She has four daughters and teaches home economics at Linden Hall for Girls in Lititz.



Mrs. Robert Gregory, Lititz R1, was elected as the president of the Lancaster County Farm Women Societies at their Fall meeting held Nov. 1.

Kutztown Grange meets

The Kutztown Grange held a Halloween Party at their recent meeting. Prizes were awarded to the prettiest, funniest and the most original in dress and also the last to be guessed. Kathryn Rabenold took

first prize in the pumpkin pie contest held by the ladies' activities group.

The Kutztown grange met with the Shartelsville Grange on Nov. 4 for a meeting.

Fulton Grange holds meeting

Fulton Grange 66 will kick off their Bi-Centennial celebration Monday, Nov. 10, at 8 p.m. at the Grange Hall in Oakryn. Miss S. Rebecca Kirk will speak on Early Schools and Churches of Southern Lancaster County while Norman Wood is slated for projections of the same.

Miss Janet Jackson, Fulton Grange's contestant from the Miss Solanco Beauty Contest will render harp selections. Members are asked to bring Bi-Centennial mementoes for display. There will be chorus rehearsal at the meeting.

LP GAS
GOES WHERE IT'S NEEDED

We know how hard you work your farm . . . the problems that arise because of unreliable fuel for equipment. We can change that . . . save you money and time, too, with LP-Gas. Call for details.

CALL (717) 665-3588

MYER'S METERED GAS SERVICE, INC.
P.O. BOX 71
MANHEIM PA. 17545

DARI-KOOL
Bou-Matic
MILKERS

Have you seen the XL 800 Parlor?
Double 4 Herringbone Parlor
with weigh Jars &
Automatic Detachers.

BOU-MATIC

A milking system for any size herd programmed for top results. Less Mastitis, better udder quality, more gentle milking, equals higher milk production.

<ul style="list-style-type: none"> +Pail milkers (Electric or vacuum pulsator) +Pipeline for stall barns +Herringbone Parlors 	<ul style="list-style-type: none"> +Carousel Parlors +Polygon Parlors +Auto Detachers
--	--

Inquiries invited from outlying areas. Several used pipelines in stock.

COMPLETE PROGRAM
SALES—INSTALLATION—SERVICE
24-Hour Service Offered

SHENK'S FARM SERVICE
501 E. Woods Drive, Lititz, PA 17543
PHONE (717) 626-1151

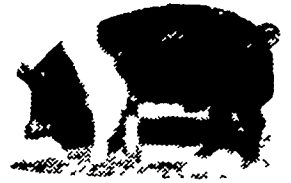
Bank reports income

The First National Bank of Strasburg reported a 7.7 percent increase in net income for the first nine months of 1975. Net income was \$414,362 or \$1.65 per share, up from \$384,867 or \$1.53 per share during the first nine months of last year.

Donald H. Hoffecker, senior executive vice president stated that the total assets of the Bank are up 8.6 percent over September 30, 1974.

HOG PRODUCERS!

Get Top Price for
Your Hogs at
New Holland



Sold in sorted lots the auction way See them weighed and sold and pick up your check

SALE EVERY MONDAY 9:00 A.M.

NEW HOLLAND SALES STABLES, INC.

Phone 717-354-4341
Daily Market Report Phone 717-354-7288
Abe Diffenbach, Manager

OPEN:
12 Noon
to
9 P.M.
Sat.
9 to 2

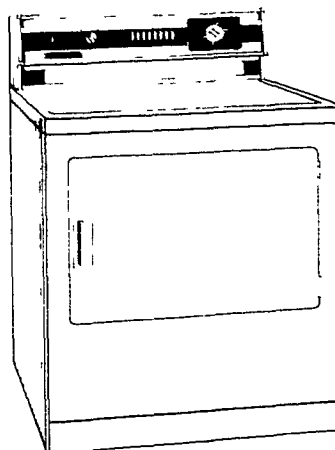
ANNUAL NOVEMBER SALE

TOM B. MORRISSEY

ELECTRONICS SERVICE

BETWEEN SCHAFFERSTOWN & MYERSTOWN, ON 501
ON THE SQUARE IN REISTVILLE 949-3006

**RANGES — REFRIGERATORS — DISHWASHERS — WASHERS
DRYERS — STEREOS — COLOR TV's — PORTABLE TV's
STEREO COMPONENTS — STEREO EIGHT TRACKS
— FM CONVERTERS**



NORGE

20 Lb. Washer

- gets clothes really clean
- all fabric controlled
- permanent press care
- automatic dispensers
- automatic lint filter
- water saver control

FINANCING AVAILABLE

OPEN:
12 Noon
to
9 P.M.
Sat.
9 to 2