

# Phosphorus symposium slated

Successful efforts to increase food production throughout the world are tied directly to effective use of fertilizers. Current knowledge about one of the

basic fertilizers, phosphorus, will be critically evaluated at a symposium to be held June 1-3, 1976 at the Tennessee Valley Authority's National Fertilizer

Development Center in Muscle Shoals, Alabama.

"The Role of Phosphorus in Agriculture," sponsored jointly by the American Society of Agronomy, Crop Science Society of America, Soil Science Society of America and TVA, will summarize current and recent research on all phases of phosphorus as it relates to crop production. The information presented will be of interest to agronomists, crop scientists, soil scientists, and representatives of the mining, manufacturing and marketing segments of the phosphate fertilizer industry.

Speakers at the symposium will present a survey of world deposits of phosphate rocks, and the supply-demand outlook for phosphate fertilizer as well as discussions of new technology for low-grade ore deposits and trends in phosphoric acid technology.

The symposium will also deal with agronomic effectiveness of various phosphate sources, phosphate reactions in soil, evaluation and use of organic phosphate reserves and residual inorganic phosphate in soil, phosphate nutrition of major crops, and the impact of agricultural phosphorus on the environment.

Papers presented during the symposium will be published in a hardcover book which should be available 9-10 months after the symposium.

For additional information, contact: E. C. Sample and F. E. Khasawneh, Symposium Co-chairmen, National Fertilizer Development Center, Tennessee Valley Authority, Muscle Shoals, AL 35660; or the American Society of Agronomy, 677 South Segoe Road, Madison, WI 53711.

# No till convention slated for Hershey

Farmers seeking the latest information on no-till practices for corn and soybean production should make plans to attend the 1975 Mid-Atlantic No-Till Convention scheduled for January 13 at the Hershey Convention Center, Hershey, Pa.

"This past winter a similar conference was held near Baltimore with 1,100 farmers attending," said James H. Eakin, Extension agronomist at The Pennsylvania State University and conference chairman. "With continued interest in no-till practices, we are finalizing plans for another one-day program."

Sponsors of the event are the various agribusinesses dealing with no-till production and the Cooperative Extension Service of Pennsylvania, Maryland, New Jersey, Delaware, and Virginia.

The program will start at 9:45 a.m. on January 13 with Harry M. Young, Jr., of Melrose Farms, Inc., Herndon, Kentucky, serving as keynote speaker. His topic will be "Economics of No-Tillage Practices."

Other topics will be techniques in planting no-tillage corn and soybeans; weed control; spray equipment and application; and new methods in seeding rye for cover crop.

Another feature will be a panel of farmers who will discuss their experiences in using no-till practices.

There will be numerous commercial exhibits on display at the Hershey Convention Center both on January 13 and from 7:30 to 9:30 p.m. on January 12.

Those interested in attending the conference may sign up for a ticket at the local Cooperative Extension Service Office.

## LOW INITIAL COST. FAST EASY ERECTION. ALL STEEL LONG LIFE.

- 14' High Opening. Easy operating sliding doors:
- Two Widths 40 and 48 Minimum length 50 feet
  - Additions to length in 25 sections to whatever length you wish
  - Multi-purpose building
  - Optional accessories so you can have the building just right for you

For a better Farm Building deal...it's American.

**C. DONALD COX**  
GENERAL CONTRACTOR

R.D. 1 Kirkwood, Pa. 717-529-2541



# OVER ELEVEN YEARS EXPERIENCE TELLS THE STORY!!



## ROUGHAGE ANALYSIS INCREASES YOUR POTENTIAL

- For Higher Milk Production
- For Greater Income Over Feed Cost
- For Improved Net Returns

Feed, whether you buy it or grow it, represents an outlay of 25 to 45% of your milk check. Beacon's Free Roughage Analysis Service can help you lay the foundation for an efficient and effective feeding program for your herd.

"Eyeball" analyses won't do the job. You need scientific sampling, high quality laboratory analyses of the samples, and ... most of all ... the recommendations of skilled and practical dairy nutritionists on how to apply these analyses to benefit your herd.

The Beacon Roughage Analysis Service will help you toward the three goals all dairymen share: Higher Milk Production, Greater Income Over Feed Cost, Improved Net Returns.

There is no charge for this very worthwhile service. The Beacon Advisor will visit your farm, take samples of all your roughages. He'll send them to the Beacon laboratory for analysis. You'll get back a report and feeding recommendations tailored specifically to your herd, its production level and your roughage supply.

Why not call us today?

**CLARK DAIRY SUPPLY**  
Rising Sun, MD

**W. L. MUMMERT CO.**  
Hanover, PA

**H. JACOB HOOBER**  
Intercourse, PA

**THARPE & GREEN MILL**  
Churchville, MD

**VAN-MAR FEEDS**  
Leesport, PA

**EARL SAUDER, INC.**  
New Holland, PA

**ROBINSON BROS.**  
Delta, PA

**MCCRACKEN'S FEED MILL, INC.**  
Manheim, PA

**H. M. STAUFFER & SONS, INC.**  
Witmer, PA

**NEW FREEDOM FARM & GARDEN CO.**  
New Freedom, PA

**RICHARD B. KENDIG**  
Phone 302-478-3058

**BEACON REPS.**  
**CHESTER WEIST**  
Phone 717-741-2600

**R. E. RUDISILL**  
Phone 717-854-2281



Beacon Feeds, York, PA Phone 717 843 9033

## What's New ...

30,000 Watt Alternator Fidelity Electric Co., manufactures of continuous duty industrial alternators, with manufacturing



facilities located in Lancaster, have announced a new addition to their line of farm PTO laterators - a 30,000 watt model.

This NEW 30,000 watt

XXX  
"The hardest thing about milking cows," observed a farmer, "is that they never stay milked."

XXX  
Men weary as much of not doing the things they want to do as of doing the things they do not want to do.

Eric Hoffer

model incorporates the latest safety and convenience features, designed into all existing models - a new safety circuit breaker for each outlet or receptacle, a new completely weather shielded enclosure to protect the receptacle panel and a new, larger PTO safety shield.

Write for descriptive literature to Fidelity Electric Co., 322 North Arch Street, Lancaster, PA 17603.

## BRUNING PAINT

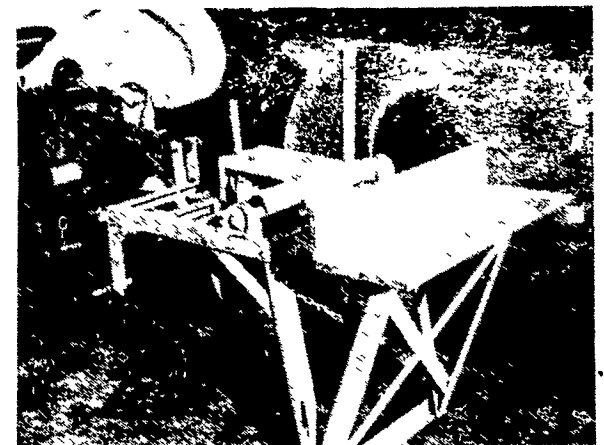
"A Quality Paint For Every Purpose"

- Engine Sales & Service
- Lawn Mower Sharpening-Hydraulic Units.

**JOHN Z. LAPP**

Centerville Road  
RD1, Gordonville, Pa. 17529

## MODEL 100 3 PT. HITCH CORDWOOD SAW



Now more than ever it pays to own a "CORDSAW" Modern design, strength and balance for today's tractors

## SHOLLENBERGER FARM SUPPLIES

Centerport, PA  
(215) 926-2722