

# What's New . . .

**Remote Control Valve**  
A remotely controlled valve designed for spray nozzles and other farm equipment using 12 VAC automotive-type systems is said to eliminate costly mechanical linkage and plumbing assemblies while providing more precise control of media application. According to the manufacturer, any number of VES Series 76 ball valves may be operated from controls located for fingertip operation by the driver so that spray materials can be applied selectively. Ball valve is self-cleaning. Design eliminates valve contamination when changing from one material to another, automatically compensates for wear to insure perfect sealing after years of service. Motor drive and gear reduction are totally enclosed and permanently lubricated. Opening or

closing the valves takes approximately 3 seconds. The Delco motor features a built-in circuit breaker with an automatic 15-second reset and is available with a micro switch or two-way weatherproof toggle switch for local control. Available in ¾", 1", and 1½" sizes, Series 76 is offered in bronze, carbon steel, or 316 stainless steel. Construction features listed for the valve include: optional Teflon or Buna-N valve seat and seals; stainless steel valve stem; optional screw end, socket weld, or tube ends (either or both); working pressure range to 1500 psi; and a temperature range of -50 to 200 degrees F. For further information contact Gordon F. Hurst, Valve Engineering Sales, 466 Whitney Way, San Leandro, CA.

**Pasture Management**  
A new 4-page brochure which explains in detail how

leading stockmen in all sections of the country are using new low cost methods to increase production of grass in pastures, is now available. It is especially timely because the current shortage and high price of feed grain is creating a greater emphasis on the importance of grass in supplying feed for the nation's beef and dairy industries.

For a free copy, send a self-addressed, stamped envelope to: FURST BROS., INC., Rhinebeck, N.Y. 12572.

pany. Announcing the purchase, Stanley S. Davies, president of Royer, stated, "The Shred-King, which will be renamed The Woodsman, will expand the lines of equipment that our Agricultural Products Division is manufacturing for the renovation and development of land."

Royer's Agricultural Products Division manufactures brush chippers as well as full range of shredders which are used for preparation of top soil and largescale leaf composting. Triumph Machinery Company, Hackettstown, N.J., is known for the manufacture of tractor-mounted sicklebar grass mowers.

The Woodsman can clear up to 3 acres of land a day for

PTO driven models, for tractors and Unimogs. In addition to its Agricultural Products Division, Royer Foundry & Machine Company has an Industrial Products Division that produces an extensive range of mechanized equipment and systems for foundries. Headquarters and manufacturing facilities for both divisions are located in Kingston, Pa.

**New Chisel Plow**  
MILWAUKEE, Wis. - A new No. 9 V-Chisel plow, with either five or seven shank base units, is being offered by the Agricultural Equipment Divisions of the Allis-Chalmers Corp.

The five shank unit will accommodate two additional shanks to get to seven, while the seven shank base is adaptable to nine or eleven shanks. The shanks are made of one-inch steel with shearbolt protection for added strength.

The plow is constructed of 4½ by 8-inch welded box-type steel, and is heaviest in the corners for more ef-

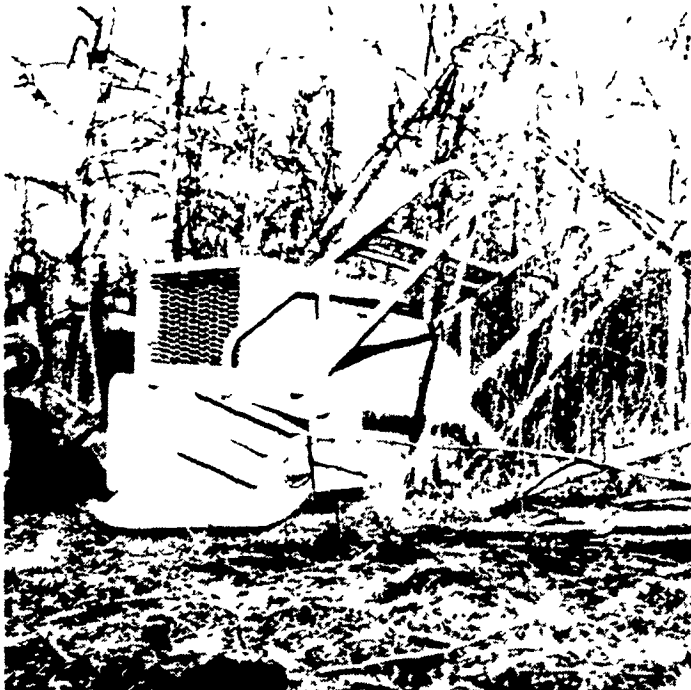
fective shock absorption. Corners are also square to provide maximum surface area for easy clamping of shanks.

A full 30 in. of vertical clearance is available for maximum working depths, while non-twist plate construction holds shanks in line.

Gauge wheels are listed as an optional and may be mounted directly to the frame or on the same center as the chisel shank. Dual wheeled gauge wheels have screw type depth adjustment. Both single and dual gauge wheels are available on the five shank unit, while dual gauge wheels are recommended for the heavier seven shank plow.

The units easily adapt to any category II or III standard or quick coupler hitches.

For more information about the No. 9 V-chisel plow, contact the Agricultural Equipment Divisions, Allis-Chalmers Corp. Box 512, Milwaukee, WI 53201.



**Royer Acquires Shred-King Line of Land-Clearing Machines**  
KINGSTON, Pa. - Royer Foundry & Machine Company has just acquired the Shred-King line of land-clearing machines previously manufactured by Triumph Machinery Com-

pany. building, recreational and highway projects by cutting down and chipping trees (up to 6" in dia.) and brush. The chipped material falls as it's cut to blanket the site with a mulch. The Royer Woodsman will be produced in self-powered models, for use with dozers and loaders, and

## Soybean supplies to farm exceed uses

WASHINGTON - Soybean supplies will be record large in 1975-76 while utilization may increase only moderately. The prospective balance points to an easier supply situation and a buildup in the carryover next August. Current market prices, reflecting this situation, declined to \$5 per bushel (No. 1 yellow, Chicago) in mid-October, about \$3.50 below a year ago.

Large carryin stocks this year and the second largest crop on record are boosting 1975-76 soybean supplies to 1.66 billion bushels, 18 percent above last year and slightly above the previous record high in 1973-74. Soybean stocks on September 1 totaled 186 million bushels, 15 million above a year ago and were exceeded only by the large carryover of 1969 and 1970. The 1975 soybean crop is estimated at 1,474 million bushels (40.1 million metric tons), up 19 percent from last year but still shy of the 1973 record.

Acres for harvest is estimated at 53 ½ million acres, about 1 million above last year. Yields per acre are estimated at 27.5 bushels, up 4 bushels from the low level of last year and near the record high yields of 1972 and 1973.

Although total use is expected to increase moderately from the reduced 1.22 billion bushels of last season, it is not likely to match the record use of 1973-74. So this may be the third consecutive year in which total utilization falls below production. Recuperation from the recession, continuing readjustment in the livestock and poultry industries, and tough competition from foreign-produced materials are major determinants which will influence soybean use. Also, there is still uncertainty over crop outturns in other countries. The U.S. soybean export outlook appears more favorable than the small exports of last year because of reduced grain and oilseed crops in the Soviet

Union and European Community.

With bigger supplies and somewhat lower prices, soybean use in 1975-76 is expected to total near 1.3 billion bushels, up from the 1.2 billion of last season but below the 1973-74 record of 1.4 billion. Crushings may total 735 to 785 million bushels, up from 701 million the previous year. As world economic activity turns up, lower prices should encourage larger exports in 1975-76, perhaps ranging from 425 to 475 million bushels, compared with 421 million last year. This would leave carryover stocks on September 1, 1976 somewhere in the 325 to 425 million bushel range.

Soybean prices to farmers in 1975-76 probably will drop sharply below \$6.50 per bushel, which reflects record supplies and prospects for little increase in utilization. During the second half of the marketing year, prices will also be influenced by prospects for soybean output and supplies in 1976.

Soybean oil supplies are estimated around 8 ½ billion pounds, up a half billion from 1974-75. Domestic disappearance may approach 7 billion pounds, compared with 6½ billion in 1974-75. Exports probably will drop somewhat below last year's 1 billion pounds, due to increased foreign supplies and reduced P.L. 480 shipments.

xxx

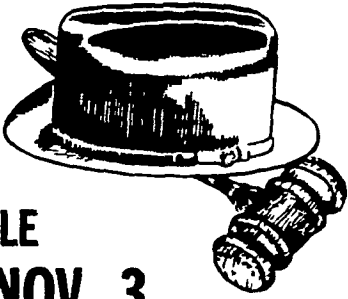
A certain businessman had a reputation for never throwing anything away, especially correspondence dating back years. His secretary, cramped for filing space, one day asked if she might dispose of some of the older, more useless material. The man was reluctant but finally said, "Well, all right, but be sure you make a copy of everything before you do."

xxx

Funny thing about kindness: the more it's used the more you have of it.

## HAT & GAVEL AUCTION CO.

1 Mile North of Lititz on Route 501



**EXTRA SALE MONDAY, NOV. 3**

5:30 P.M.

### COLLECTIBLES - HOUSEHOLD

Magnavox Colored TV, sectional sofa, 2 pc. living room suite, coffee tables, electric fans, like new; chest of drawers, metal kitchen cabinet, wooden ice box, box springs and mattresses, sewing notions, maple acorn single bed, lawn mower, Planet Jr. garden tractor, oak chairs, 5 H.P. mini bike, bicycles, china, pottery, pressed.

This Sale includes one large truck load from one home in good condition.

**THURSDAY EVE. NOV. 6**  
5:30 P.M.

### ANTIQUES, HOUSEHOLD, COINS

6 cane seated Oak chairs, fold-down high chair, Tiffany type hanging light, quilts, oak captain's chairs, full spindle chairs, Regulator wall clock, small sleigh bells, earthen dishes, 3 prong Young fork, ladles, cherry seeder, early 22 rifles, fiesta, pressed, cookie cutters, Belgian spatter, Early advertising pieces, quilt patterns, turkey platter, adult potty chair and lots more antiques and collectibles.

Coins to be sold at 8 P.M.

## PUBLIC SALE SATURDAY, NOV. 8, 1975

10:30 A.M.

**AT HAT & GAVEL AUCTION CO.**  
SALE FOR HENRY HUBER, LITITZ COMPLETE HOUSEHOLD

Mahogany chest of drawers, scroll top oak bed, small roll top oak desk, dehumidifier, Agate, Black and Decker electric trimmer, jelly cupboard, Int. Harvester refrigerator, sideboard, oak chairs, wicker rocker, card table and chairs, oak dresser, wicker settee, tapered leg table, wooden handled forks with star, silverware, Daisy and Button, mixing bowls, Ironstone, swivel rocker, 20 ft. oak extension table, 6 plank chairs, Queen Ann server, Ingrahan mantle clock, Bavarian, Carnival, German, colored Ironstone, Luke pattern, Prussia, Hen on Nest, Shirley Temple, Hobnail, Sterling Silver ware, lots of linens, etc.

Oak wash stand, Empire chest of drawers, small wooden chest, Hollywood bed, 3 pc. Maple bedroom suite, star quilt and other quilts, pictures and frames, blanket chests with original graining, upholstered rockers, sofa bed, pedestal wall table.

WE SPECIALIZE IN PUBLIC AUCTIONS, ESTATES AND ANTIQUES.

## WILBUR H. HOSLER

306 Owl Hill Road, Lititz

**Harold K. Galebach, Partner**

HAT & GAVEL AUCTION CO. SELLS ON COMMISSION - CALL 626-0254

## PUBLIC SALE ANTIQUES & HOUSEHOLD GOODS

**SAT., NOV. 8, 1975**

AT 10:00 A.M.

Located South of Wakefield off 222 at Pilot-town Rd. between Pleasant Grove and Peach Bottom, west along River View Rd. Watch for sale signs.

Jelly cupboard; dutch cupboard; 2 kitchen cupboards; parlor suite; Victor victrola w-horn; bench; stool; square kitchen table; sm. tables; maple table; odd chairs; lawn chairs; oak rocker & 2 matching chairs; dresser; 2 wardrobes; 2 chifferobes; 2 blanket chests; oak bed; 2 double metal beds; goose feathered bed; cot; metal crib; coal oil stove; stove pipe; coal range; 2 space heaters; G E stove; butchering furnace; Columbian Echo kitchen stove; Howe treadle sewing machine; wooden washing machine; wringer washer; 2 copper boilers; 2 wash boards; glass butter churn; half gal. jars; aluminum tray, pitcher & 6 tumblers; pots; pans; books; book case; 2 lamps; floor lamp; bread mixer can; apple peeler; lrg. skillet; iron griddle; shoe lath, 4 sizes; sad irons; child's swing; corn sheller; grind stone; traps; bricks; platform scales; pitcher pump & trough; 4 metal sashes; sausage grinder on stand; crocks; adv. boxes; Deitz lanterns; other lanterns; blankets; coal stirs; coal bucket; metal scalding trough; walking plow; yard, lawn roller; table saw; vise; elec. grinder; trussels; Charles & buckeye incubators; washtubs; milk cans; scrapple & apple stirs; butter scales; 2 - 9 x 12 rugs; 2 sleds; table drill press; picture frames; the following wooden items: dough board, barrels, buckets, tubs, churn, wheel, staves, pulley, & pump spear; meat bench plank, locust posts, 3 x 3 walnut lumber 5 ft.; walnut boards; many more items too numerous to mention. Not responsible for accidents day of sale.

Refreshments

Sale by

**CARRIE E. SMITH**

Aucts. Lloyd H. Kreider  
Randal Kline