

## FFA's win contests at training meeting

HINKLETOWN - The annual Lancaster County FFA Leadership Training conference was held here on Thursday afternoon. Youths representing the various schools in the county participated in the event which teaches newly elected officers the skills needed for the positions.

Les Hershey, son of Mr. and Mrs. Floyd Hershey,

Kirkwood R1, was named the winner of the FFA Quiz contest held in conjunction with the conference.

A sophomore at Solanco High School, Les topped a field of 12 candidates seeking to win the contest. Dr. Robert Herr, Ag instructor and Henry Givler, area superintendent for the FFA, judged the event.

Greenhand FFA's were also judged on their ability in public speaking during the creed contest. Steven L. Hershey, son of Mr. and Mrs. Donald Hershey, R6, Manheim, captured first in the contest.

Both of the youths were presented their awards during a banquet held in Blue Ball which followed the conference.

Eleven honorary Red Rose Farming degrees were also presented at the banquet. Several businessmen of the country who had been of assistance to the FFA chapters received the award. They included: Clair Baum, J. Richards Wood; G. Leighton Hessler, G. W. Myer, C. B. Hooper; G. Edward Minder; R. P. Simon, G. R. Drumm; Walter Heistand; Gary Campbell and Harold Swisher.

The Lancaster County FFA officers planned the event in cooperation with their advisors and ag instructors.



Les Hershey (left) a sophomore at Solanco High School captured first place in the FFA Quiz contest held on Thursday afternoon. Shown with the student is Henry Givler, area FFA supervisor



Patchwork pillows commanded considerable attention at the

Grange's needlework and crafts display.

### Art Display to Open in Phila.

"Showcase 1975," a combined exhibition featuring original works of art by the resident artists, sculptors, designers and photographers of Franklin Mint Corporation, will open in the Centre Square Galleria, 1500 Market St., Philadelphia, on Monday, Nov. 10 and run through Nov. 22.

The gallery will be open to the public daily and Sunday from 9 a.m. to 5 p.m. Admission is free.

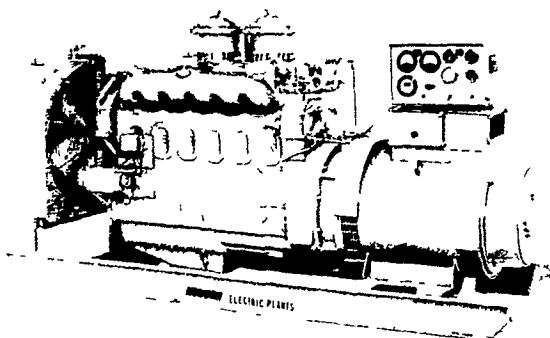
"Showcase 1975" will feature five separate categories - oils and acrylics, watercolors, graphics, sculpture, and photography. A total of 129 personal works of art by 46 Franklin Mint artists has been selected for display, making it the largest show since the exhibitions began in 1971.

### Electric Generating Systems

Built to Your Specifications

Manual or Automatic

L. P. Gas - Diesel - Gasoline -



Sales - Service

### Martin Electric Plants

Isaac W. Martin, Owner  
Pleasant Valley Rd., RD2  
Ephrata, PA (717) 733-7968

## Dollar-Wise Decorating

GETTING THE INDOOR-OUTDOOR FEELING

If you're sorry summer's over, some clever decorating hints can help keep a summer-like atmosphere in your life all winter long, no matter where you live.

Armstrong interior designers put their heads together to dig up some special outdoor feelings for an "indoor world."

Forgotten for a while, but back on the indoor-fashion scene now is wicker—new and hand-me-down—popular in either natural or painted form.

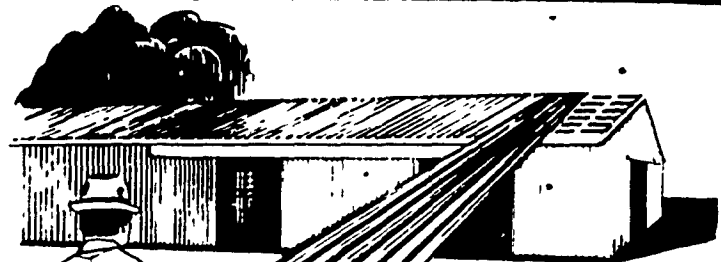
Bamboo shades, wood strips that create lacy trellis partitions, and plants, all add light, airy touches to a room.

Colors with summer in mind are available in moderately-priced, luxurious new carpet offerings:

"Sea Mist Green" and "Sunny Yellow" are found in *Natural Touch*—a new textured plush. A sculptured shag called *Juno* comes in "Seashell White" that brings back memories of sandy shores.

# CARTER Lumber

EVERYDAY LOW PRICES



FABRAL CORPORATION

The Finest Name in

## METAL ROOFING & SIDING

### DOUBLE-RIB

ALUMINUM HI-STRENGTH ALLOY  
**\$19.96** 100 SQ. FT.

WIDTH 48" NET  
LENGTHS 8' thru 22'

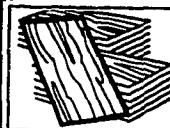
GALVANIZED STEEL 29 GAUGE  
**\$23.47** 100 SQ. FT.

WIDTH 32" NET  
LENGTHS 7' thru 14'

29 Ga. 3/4" Corr. Galv. Steel \$23.06

### SQUARE BARN POLES - Penta

	10'	12'	14'	16'	20'
4" x 4"	\$3.80	\$4.56	\$5.32	\$6.50	
4" x 6"		\$6.98	\$8.15	\$9.70	\$14.16
6" x 6"		\$10.48	\$12.22	\$14.54	\$21.24

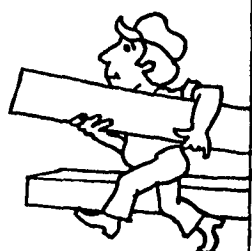


### 4' x 8' PLYWOOD

	1/4"	3/8"	1/2"	5/8"	3/4"
AD INTERIOR FIR	\$5.95	\$7.49	\$9.15	\$10.25	\$11.95
AC EXTERIOR FIR	\$6.15	\$7.83	\$9.59	\$10.85	\$12.45
CD EXTERIOR		\$4.65	\$5.55	\$7.25	\$8.99

### Large Selection of SIDING

INSULITE SIDING Primed 7/16" x 12" x 16" ... 100 sq. ft. **\$21.60**  
ALUMINUM SIDING Horizontal-White... 100 sq. ft. **\$36.70**  
SOLID VINYL SIDING 8" Horizontal-White... 100 sq. ft. **\$38.89**



OPEN 7:30 TO 5:30 — 6 DAYS A WEEK . . . DELIVERY AVAILABLE



2275 Old Philadelphia Pike CARTER LUMBER  
JUST 3 MILES EAST  
ON RT. 340  
—PHONE—  
397-4829 397-4820

