

# CHESTER CO. DHIA

(Continued from Page 66)

Ronald F. Elliott									
Bobbie	GH	8-1	305	20,128	3.7	747			
87	GH	5-1	305	16,450	4.4	718			
92	GH	4-0	305	17,023	3.9	660			
Nana	GH	7-10	299	16,210	4.0	647			
72	GH	5-8	305	14,642	4.4	642			
89	GH	4-1	305	15,003	4.2	631			
47	GH	7-2	305	16,014	3.9	630			
53	GH	6-0	305	14,363	4.2	600			
Ben S. Beller									
Mart	GH	2-4	305	17,125	4.4	747			
Newton Evans, Jr.									
50 A	RH	5-1	299	17,632	4.2	742			
67	RH	4-5	305	18,726	3.8	720			
76	RH	5-11	305	16,792	4.0	669			

Richard I. Breckbill									
7	RH	5-4	305	19,207	3.8	734			
Jerry L. Hershey									
41	GH	5-0	305	18,673	3.9	734			
H. & R. Mason									
58 A	RH	5-7	305	19,407	3.8	732			
34 0	RH	6-4	274	17,183	3.9	674			
68 A	RH	10-9	305	17,933	3.5	622			
60 C	RH	9-11	290	14,331	4.2	602			
William P. Moore									
453	RH	5-7	297	18,407	4.0	732			
673	RH	3-3	290	18,082	4.0	718			
458	RH	5-4	305	17,305	4.0	687			
562	RH	4-6	305	18,361	3.7	672			
668	GH	3-3	305	19,048	3.4	652			
203	RH	8-11	296	13,237	4.8	640			
271	GH	6-5	305	14,633	4.3	636			
674	GH	3-1	305	16,925	3.6	604			
Samuel B. Acker									
203	RH	6-8	305	17,346	4.2	729			
R 187	RH	8-2	305	19,908	3.7	728			
243	RH	5-2	305	15,992	4.5	724			
R 160	RH	7-7	305	15,664	4.5	704			
264	RH	5-0	305	15,485	4.5	697			
R 165	RH	7-4	305	19,021	3.6	685			
272	RH	5-0	305	15,877	4.3	678			
288	RH	3-11	305	13,508	4.6	624			
390	RH	2-5	305	13,105	4.8	623			
262	RH	5-5	305	14,224	4.3	611			
387	RH	2-11	305	15,133	4.0	609			
G 14	RH	10-11	305	16,006	3.8	601			
Arthur D. Hershey									
Susie Q	RH	4-10	305	23,882	3.0	725			
Lucky	RH	7-0	305	14,152	4.8	685			
Rothenberger Bros.									
61	GH	6-5	305	21,503	3.4	725			
11	GH	5-2	297	13,751	4.4	601			
Evan Gill									
Pluma	RH	6-4	305	18,055	4.0	725			
Boots	RH	3-2	305	16,279	3.7	601			
Bailey & L. Shoemaker									
32	GH	3-6	305	15,590	4.6	722			
43	GH	10-1	305	15,367	4.1	631			
105	GH	8-0	296	15,026	4.0	603			
Dean Roland									
G 28	GH	6-0	305	19,889	3.6	717			
Mast Stoltzfus									
Esther	RH	7-10	305	18,901	3.8	715			
Dorothy	RH	4-3	305	17,990	3.5	636			
Lenape Dairy Farm									
524	RH	5-5	305	19,370	3.7	709			
757	RH	3-2	304	19,981	3.5	706			
516	RH	5-4	305	18,469	3.7	686			
616	RH	4-2	305	19,484	3.5	681			
646	RH	4-1	305	17,933	3.8	681			
461	RH	6-2	305	17,678	3.8	680			
X 87	RH	3-6	305	16,648	4.0	671			
507	RH	5-9	298	15,738	4.2	668			

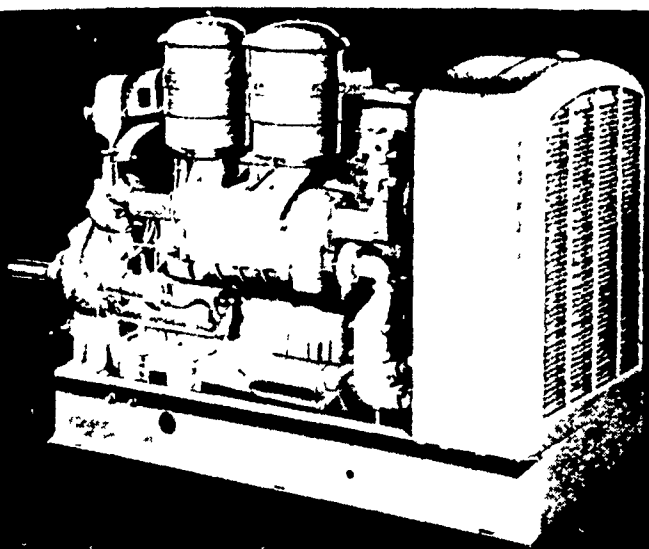
# Lancaster Farming, Saturday, Oct. 25, 1975-67

574	RH	5-0	305	17,205	3.7	642			
749	RH	3-1	305	16,423	3.8	616			
520	RH	5-4	305	16,537	3.7	615			
145	RH	11-9	305	16,458	3.7	615			
813	RH	9-2	305	19,084	3.2	614			
538	RH	6-3	305	20,156	3.0	613			
626	RH	4-5	305	17,344	3.5	613			
677	RH	3-10	305	17,892	3.4	610			
577	RH	5-1	289	17,603	3.4	601			
583	RH	5-0	292	15,960	3.8	600			
Willis & Dennis Bush									
1	GH	3-2	303	17,497	4.0	708			
64	GH	5-3	305	21,547	3.0	649			
Richard Landis									
Fred	GH		305	16,188	4.4	707			
H. R. & H. L. Brown									
YT 21	RH	6-7	305	17,364	4.1	706			
53	RH	5-11	305	17,708	3.9	693			
YT 100	RH	3-4	305	15,683	4.0	622			
Elam Petersheim									
Della	RH	5-11	305	16,646	4.2	705			
Millie	RH	5-11	305	14,488	4.4	636			
Edwin C. Todd									
Elsie	RH	9-1	305	18,464	3.8	704			
Markas	RH	7-10	305	17,059	3.9	665			
Lady	RH	8-6	305	14,011	4.3	607			
Allen S. Hoover									
59	GH	8-1	305	18,147	3.9	702			
93	GH	4-4	305	14,156	4.3	610			
Richard Proud									
122	RH	4-7	302	17,956	3.8	691			
113	GH	9-0	305	16,283	4.1	671			
90	GH	7-3	305	16,711	3.8	627			
132	GH	3-10	305	15,625	4.0	626			
98	RH	6-3	305	16,847	3.7	616			
Paul M. Snader									
5	GH	6-8	265	15,255	4.5	690			
42	GH	3-1	305	17,761	3.8	671			
Elmer A. Mast									
White Face	GH	4-1	305	18,094	3.8	689			
Wilma	GH	7-4	295	15,487	3.9	604			
Desire	GH	3-2	305	11,691	5.1	601			
John W. Yeager									
98	GH	6-1	305	15,671	4.4	689			
Charles H. Moore									
2	GH	7-6	305	15,171	4.5	681			
6	GH	4-1	305	15,733	4.0	623			
Timothy Kauffman									
Pauline	RH	6-2	305	18,458	3.7	680			
Retina	RH	3-2	305	17,568	3.9	678			
Paul H. Eby									
Leader	RH	7-4	305	18,013	3.8	678			
David Weaver									
Patty	RH	7-2	305	20,521	3.3	673			
Daffy	RH	3-8	305	22,424	3.0	668			

(Continued on Page 69)

## LEID'S DIESEL SERVICE

RD3, New Holland Ph. (717) 354-8024



Detroit Diesel Power Unit for use in

- IRRIGATION
- SAW MILLS
- FEED MILLS
- GENERATOR SETS

Complete Sales, Parts & Service

AUTHORIZED DISTRIBUTOR FOR:

- + K.C.G.M Diesel Parts
- + Fleet Guard Filters
- + Gates V-Belts & Hoses

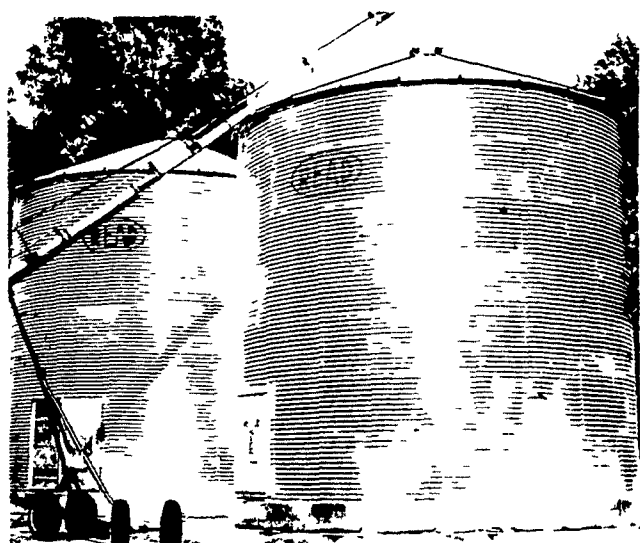
THE CORN IS HERE  
TIME IS RUNNING OUT

DON'T WAIT



DON'T WAIT

GRAIN STORAGE BINS



READ Grain Bins are made of heavy galvanized steel, and are die-formed for easier, faster erection. They are made stronger and tighter than other similar bins and will give you a lifetime of trouble-free service.

Bulk Feed Tanks also Available

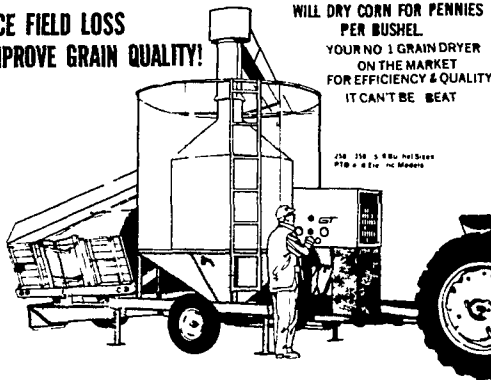
SEVERAL SIZES IN STOCK

## SOLVE WET GRAIN PROBLEMS

WITH A **GT DRYER**

REDUCE FIELD LOSS AND IMPROVE GRAIN QUALITY!

WILL DRY CORN FOR PENNIES PER BUSHEL. YOUR NO. 1 GRAIN DRYER ON THE MARKET FOR EFFICIENCY & QUALITY. IT CAN'T BE BEAT.



**GT TOX-O-WIK® CONTINUOUS RECIRCULATING GRAIN DRYERS**

WORLD'S LARGEST SELLING RECIRCULATING BATCH GRAIN DRYERS BECAUSE . . .

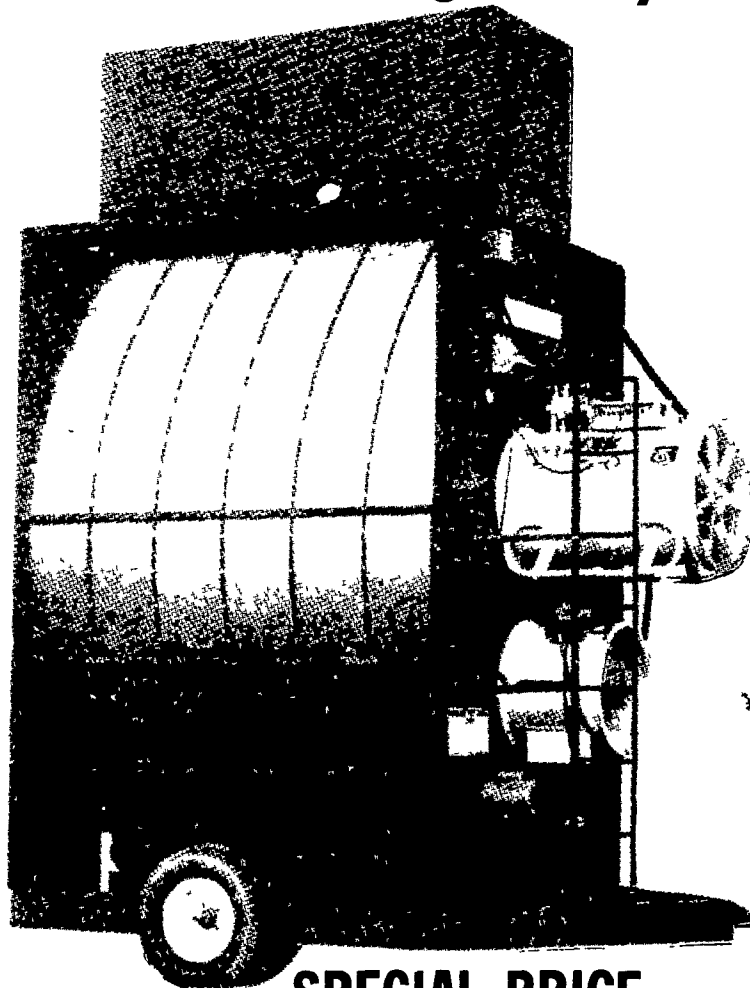
- PRICE IS LOWER
- COSTS LESS TO OPERATE
- EASIER TO OPERATE
- DRIES MORE EFFICIENTLY

The Only Dryer That WILL NOT Crack Your Grain

SELF CONTAINED UNITS—  
No Extra Augers or Bins Needed For a Complete Operation.

## TOX-O-WIK II

Continuous flow grain dryer



**SPECIAL PRICE**

ON CONTINUOUS FLOW MODELS IN STOCK

- 1 - USED MOD. 500 GRAIN DRYER
- ALSO 1 - NEW MOD. 350 DRYER IN STOCK

**SHENK'S FARM SERVICE**

501 E. WOODS DRIVE,  
LITITZ, PA

Phone (717) 626-1151