

# Lititz area farms hit by Saturday's tornado

The weather had been unusually beautiful and warm last Saturday, until evening brought with it a freak thunderstorm and tornadoes which ripped through the northern portion of Lancaster County at Bricker-ville.

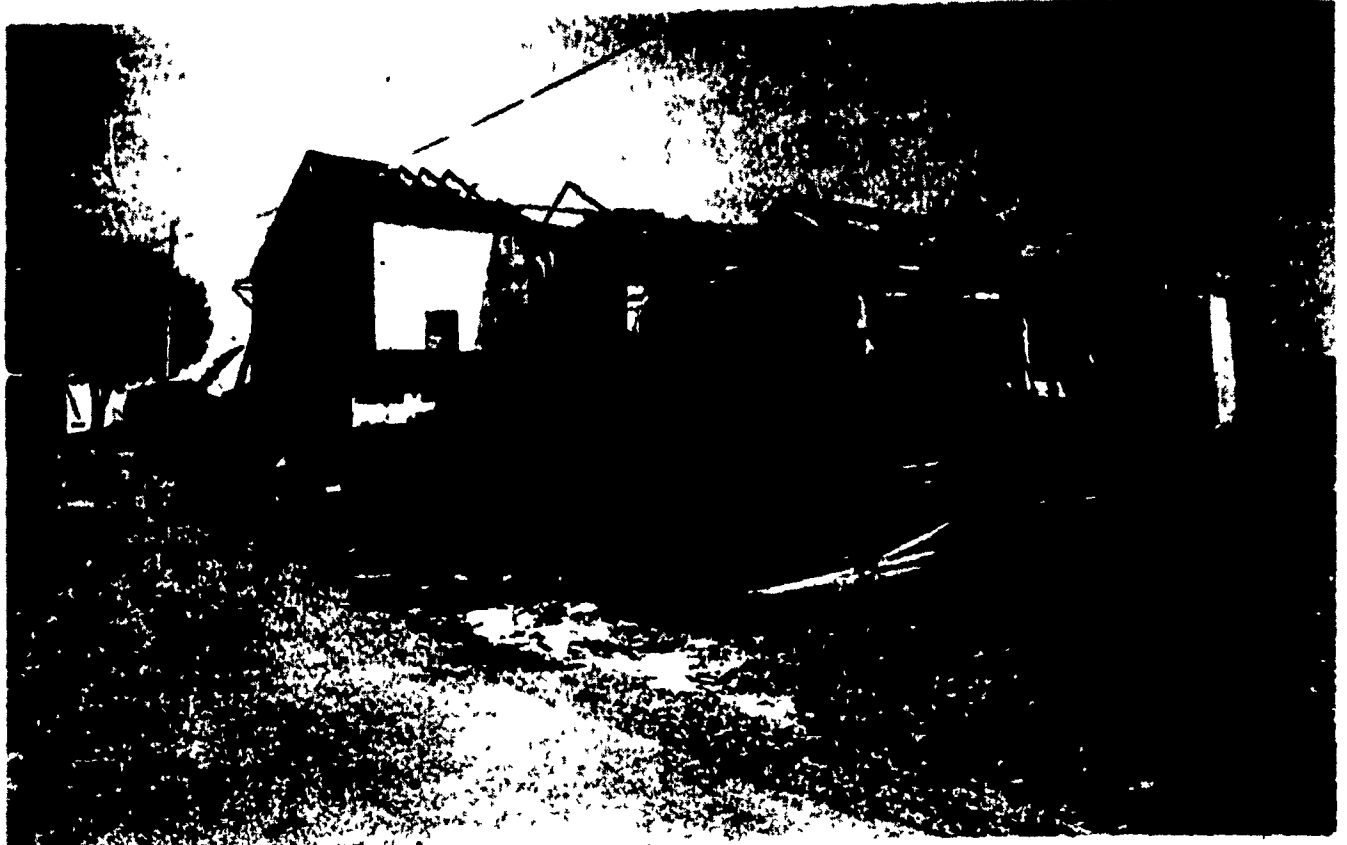
Most of the damage was centered around a small territory between routes 501 and 322 in the Brubaker Valley Area. Early in the week the damage estimates centered around the \$400,000 mark and may increase with more reports.

One of the hardest hit

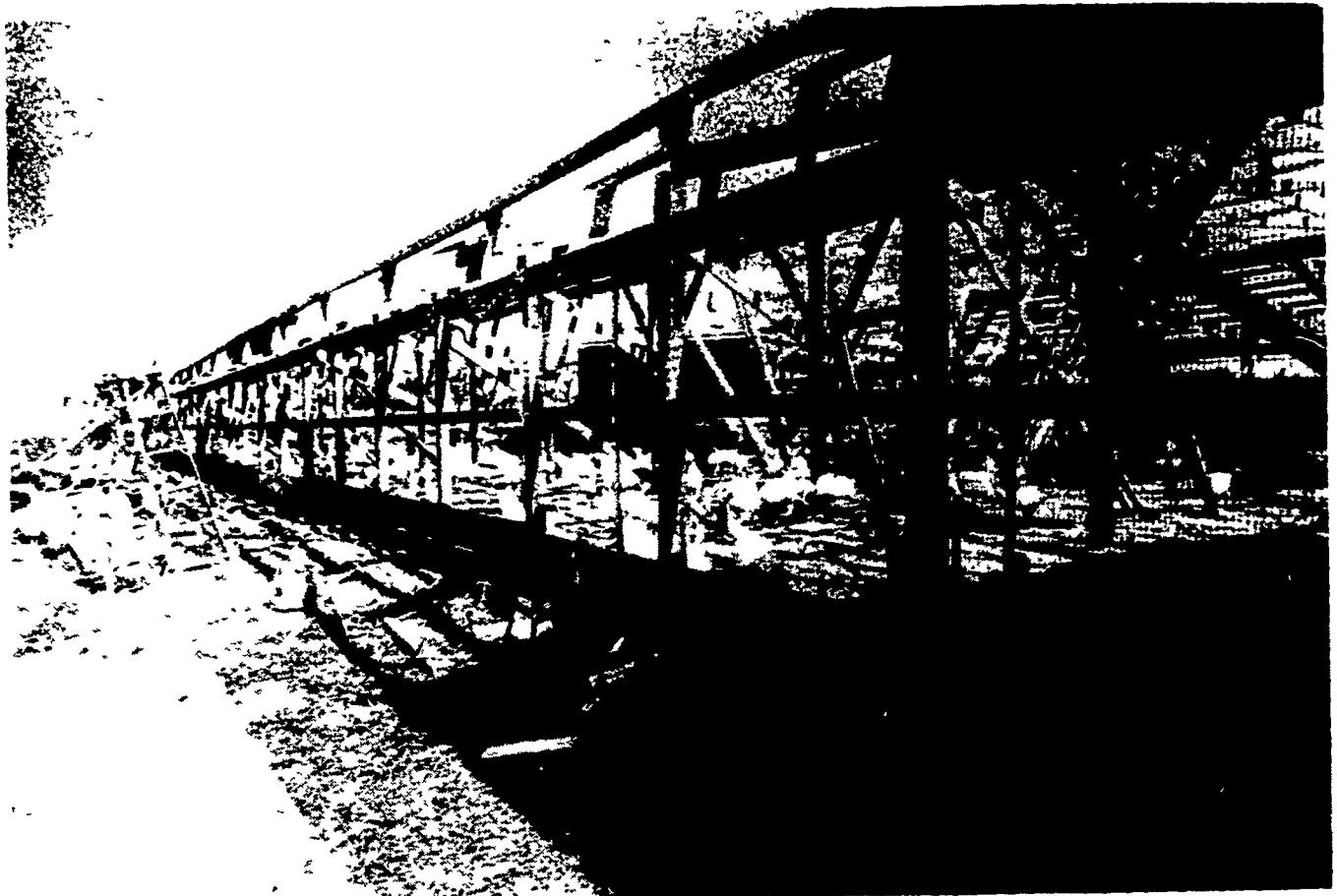
farms in the area was the property of H. Landis Martin on Brubaker Valley Rd. Three small buildings were destroyed on the farm as well as the roof being blown off the barn. Martin's neighbors responded quickly to the farm and by Tuesday the barn roof had been replaced.

At the John Sensenig turkey farm Reifsnyder Rd., the tornado took off a large portion of the roof covering the animal pens. With the help of several neighbors and volunteers, the roof was replaced by the middle of the

(Continued on Page 67)



Piles of dirt and debris in the foreground replaced what had been a tobacco shed on the Paul G. Martin farm along Crest Rd., near Lititz before a tornado destroyed it on Saturday evening.



These turkeys on the John Sensenig farm, Reifsnyder Rd., near Lititz, were temporarily without a roof after a tornado destroyed part of their housing last Saturday. By Tuesday afternoon neighboring farmers were ready to finish repairs to the structure.

**FRESH COWS** **EVERY WEDNESDAY IS** **SPRINGERS**

**DAIRY DAY**

**AT NEW HOLLAND SALES STABLES, INC.**  
New Holland, PA

If you need 1 cow or a truck load, we have from 100 to 200 cows to sell every week at your price. Mostly fresh and close springing Holsteins.

Cows from local farmers and our regular shippers including Marvin Eshleman, Glenn Fite, Gordon Fritz, Blaine Hoffer, Dale Hostetter, H. D Matz, and Jerry Miller.

**SALE STARTS 12:30 SHARP**  
Also Every Wednesday, Hay, Straw & Ear Corn Sale 12:00 Noon.

For arrangements for special sales or herd dispersals at our barn or on your farm, contact  
**Abram Diffenbach, Mgr.**  
717-354-4341  
OR  
**Norman Kolb**  
717-397-5538

**HEIFERS** **STOCK BULLS**

**NOW!**  
**PREPARE**  
**FOR SEEDING**

CALL US FOR PROMPT SERVICE ON:

**LIMESTONE** — Truck Spread  
**FERTILIZER** — Fast Service — Premium Grades.

Containing Magnesium and Sulfur for small grain. Available in bags, bulk. Trailer spreaders or custom truck spreading.

FALL SEASON DISCOUNTS NOW IN EFFECT

Authorized Dealer  
**HEISEY FARM SERVICE**  
RD2, Mount Joy, PA  
Phone 653-1568

**BULK BLENDS**  
**MASTER FARMER**  
ANHYDROUS AMMONIA

**ORGANIC PLANT FOOD CO.**

2313 Norman Rd., Lancaster, Pa. Ph. 397-5152

**Me — the farmer.**

I'm glad I'm a farmer. Sometimes I'm angry about being a farmer. And disappointed. Elated. Puzzled. Worried. And, I suppose, every emotion in the book. But I'm glad I'm a farmer. Because I know what I am. And what I feel. I feel I'm akin to my land and the things that grow on my land . . . And the sky over my land and the water that falls on it and flows through it . . . And the livestock that sustains itself upon my land . . . And the buildings that shelter me and my wife and our children and the machines that help to make my land fruitful. These are a bone-deep part of me.

As is sweat. Cloudburst. Drought. Repairs. Disease. Heartache. Market losses. And profits. Sowing. Reaping. And a hundred and one setbacks and successes, large and small, that other men may never know. But that I know. And am content with. Not because farming is easy. It isn't. Or because a farmer enjoys fame. He doesn't. Or because a farmer like me is a wealthy man. I am not. It's simply because I know what I am. And I know what I feel. I wouldn't have me any other way. Me — the farmer.

**Sperry New Holland**

<b>L. H. Brubaker</b> 350 Strasburg Pike Lancaster 397-5179	<b>C. E. Wiley &amp; Son, Inc.</b> 101 S Lime St Quarryville 786-2895	<b>I. G. Ag Sales</b> Silverdale PA 18962 215-757-5136	<b>Roy A. Brubaker</b> 700 Woodcrest Ave Lititz, Pa 626-7766
<b>Albert J. Noss</b> RD2 Oley Pa 215-987-6257	<b>A.B.C. Groff, Inc.</b> 110 S Railroad Ave New Holland 354-4191	<b>Stanley A. Klopp, Inc.</b> Bernville, Pa 215-488-1500 215-488-1510	<b>Shollenberger Farm Supplies</b> 4th & Pine Sts Hamburg, Pa 215-562-2005