

Local Livestock Market, Auction News

Local Grain

Friday, Oct. 17

These prices are made up of the average prices quoted by a number of participating local feed and grain concerns. It should be noted, however, that not every dealer or broker handles each commodity. All prices are per bushel except ear corn which is per ton.

The average local grain prices quoted Friday, Oct. 17, are as follows:

	Bid	Offered
Ear Corn		
Old	67.33	78.33
New	44.75	54.00
Shelled Corn	2.68	2.89
Barley	1.80	2.04
Oats		
Local	1.40	1.62
Western	1.70	1.90
Wheat		

St. Louis Auction

October 16
Weekly Cattle
Review

Receipts 9,400
Week Ago 8,300
Year Ago 8,300
Compared to last Tuesday, slaughter steers 50 cents lower. Heifers unevenly 50-1.50 lower. Cows 50 cents lower. Bulls steady. By midweek, cows in poor demand. Supply mixed good and choice 900-1100 lb. slaughter steers YG 2-4 with

Millers 3.28½
Feed 2.25
+Bid is the price the dealer will buy from the farmer delivered to the mill.
Offered is the price the dealer will sell for at his mill.

choice 110-1250 lbs. scarce. 25 percent steers; 20 percent heifers; 20 percent cows and 33 percent feeders.

SLAUGHTER STEERS: Choice YG 3-4 1000-1250 lbs. 49.50-50.00; Choice YG 2-4 900-1100 lbs. 47.00-49.50. Mixed Good and Choice 900-1100 lbs. 45.00-48.00. Good 900-1100 lbs. 42.00-45.50. Standard and Good Holsteins 950-1200 lbs. 36.00-41.50.

SLAUGHTER HEIFERS: Choice YG 2-4 850-1050 lbs. 45.00-46.75. Mixed Good and Choice 700-1000 lbs. 41.50-45.00. Good 36.00-42.00.

COWS: Utility 21.50-23.50, High Dressing 24.00. Cutter 18.00-21.50; low Cutter 14.00-18.00. Canner 10.00-14.00.

BULLS: YG 1-2 1000-1800 22.00-26.00.

New York Dressed Meats

Oct. 16
Daily Distributive
Less than
Carlot Meat Trade

Compared with Wednesday: prices generally weak for all fresh meat classes and while quotations are unchanged bulk late sales favoring low side of price range. Beef chucks and rounds under pressure with many instances of loin cuts in small accumulations going without bids. General demand fair to poor for most meats.

Steer Beef:
Prime 600-900 lb. 82.00-82.50, Choice 600-700 lb. 81.50-82.00, 700-800 82.00-83.00, 800-900 lb. 82.50-83.50, Good 500-800 lb. 73.00-78.00.

Heifer Beef
Choice 500-700 lb. 78.50-79.00.

Calf (Skin Off)
Choice 150-350 lb. 61.00-65.00, Good 150-350 56.00-62.00, Standard 150-350 lb. 50.00-56.00.

Veal (Skin Off)
Choice 90-150 lb. 83.00-92.00, Good 60-90 lb. 76.00-84.00, Standard 60-120 lb. 70.00-77.00.

Lamb
Choice & Prime 30-55 lb. 94.00-96.00, 55-65 lb. 94.00-96.00.

Choice Beef Cuts:
Hinds (Steer) 145-190 lb. 95.00-97.00, Arm Chucks 90-105 lb. 65.00-69.00, Ribs (7-Rib) 34-40 lb. 110.00-118.00, Loins (Trmd) 50-70 lb. 120.00-125.00, Rounds (Steer) 70-95 lb. 90.00-93.00, Full Plates 52.00-52.50, Hinds (Heifer) 120-170 lb. 91.00-94.00.

Pork Cuts (Fresh):
Loins (Regular) 8-14 lb. 116.00-118.00, 14-17 lb. 115.00-117.00, Picnics (Regular) 4-8 lb. 72.00-74.00, Boston Butts 4-8 lb. 96.00-100.00, Spareribs 3 lb down 117.00-123.00, Hams (Skinned) 14-17 lb. 109.00-112.00, 17-20 lb. 105.00-107.00.

Kosher Steer Beef:
Choice and Prime Forequarters 70.00-75.00.

Omaha Auction

October 16
Compared with the previous week's close: Average-Good to Prime Steers 1.50-2.00 lower, Standard and Low-Good 50-1.00 off. Heifers 1.25-1.50 lower, some Good and Low-Choice 750-900 lbs. 1.75-2.00 lower. Cows 50-1.00 higher, continued best demand for High-Utility and Commercial Bulls steady.

Four day receipts 16,200 compared 15,900 previous week and 16,200 a year ago. Steers approximately 32 PCT week's total, heifers 27 PCT, cows 11 PTC, and feeders for Friday auction 27 PTC. Fed cattle prices came under severe downward pressure in reflection of extremely bearish conditions which engulfed the carcass trade late previous week and carried over into the current period. Part of downturn in live prices a delayed reaction since supplies late previous week were insufficient to reflect the break in carcass trading. Activity generally slow as buyers sought to establish an acceptable ratio between current live prices and carcass realizations; in addition, most slaughterers came into period with sufficient live inventories on hand for immediate requirements and were not aggressive for large additional numbers with some curtailing slaughter quotas. Steers and heifer supply

predominantly good to average-choice.

STEERS: Six loads Choice with Prime 1150-1200 lbs. Yield Grade 3-4 49.25-49.50, during week, few loads and part loads 48.75-49.00. Choice 1100-1250 lbs. yield grade 2-4 47.25-48.50, load 1150 lbs. 49.00. Choice 950-1100 lbs. mainly yield grade 2-3 46.00-48.00. Mixed Good and Choice 925-1200 lbs. 44.50-46.50, occasionally 46.75-47.00 on weights 1100 lbs. and heavier. Good 40.00-45.50. Standard and Low-Good 38.00-40.00, mostly Low Good 1150-1300 lb. Holsteins yield grade 2-3 39.25-40.00.

AVERAGE OF LS - 214, detailed quotations, for Choice 900-1100 lb. Steers this week 47.62; Choice 1100-1300 lbs. 48.60.

HEIFERS: Two loads Choice with few Prime 975 lbs. yield grade 3-4 47.00 early. Choice 900-1050 lbs. yield grade 2-4 closed 45.00-46.00. Choice 800-900 lbs. yield grade 2-3 43.50-45.25. Mixed Good and Choice 750-975 lbs. 42.50-45.00. Good 36.00-41.00. Small lots standard and Low-Good 31.00-33.50.

COWS: Utility and Commercial 20.50-23.00, few High-Utility and Commercial 24.00-25.00. Canner and cutter 15.00-21.00, Mixed Cutter and Low-Utility 21.25-21.50. Heiferettes 26.00-31.00.

BULLS: Yield Grade 1-2 1400-1800 lbs. 23.00-27.00, few yield grade 1 28.00-29.00.

Middleburg Auction

Middleburg, Pa.

Oct. 14, 1975

CATTLE 259. Compared with last Tuesday's market, slaughter steers & cows steady to \$1 higher. Choice slaughter steers 45.25-47.00, Good 42.25-46.10, Standard 30.75-41.75, Utility 22.75-29.60. Choice slaughter heifers 40.75-43.35, Good 36.00-41.00, Standard 23.75-32.75, Utility 18.75-22.75. Utility & High Dressing Cutter slaughter cows 24.75-26.35, Cutters 23.60-25.25, Canners 19.75-23.60, Shells down to 16.10. Good slaughter bullocks 32.50-34.25, Standard 30.50-33.50. Yield Grade No. 1 1000-1700 lbs. slaughter bulls 27.75-30.60; yield grade No. 2 900-1600 lbs. 17.75-27.75. Good 300-600 lbs. feeder steers 22.00-27.50, Medium 300-600

lbs. 15.00-20.75.

CALVES 140. Vealers unevenly steady. Few Prime vealers 58.00-60.50, Choice 52.00-58.00, Good 45.00-50.00, Standard 32.00-40.00, Utility 90-120 lbs. 20.00-26.00, 70-85 lbs. 15.00-21.00.

HOGS 460. Barrows & Gilts mostly \$3 lower. US No. 1-2 200-230 lbs. barrows & gilts 63.70-64.20, No. 1-3 200-250 lbs. 62.50-63.70, No. 2-3 190-260 lbs. 61.50-62.50, No. 2-4 240-280 lbs. 59.00-61.50. US No. 1-3 300-550 lbs. sows 52.00-55.60, No. 2-3 300-600 lbs. 45.00-52.00, few thin sows 35.00-38.50. Boars 41.00-50.50.

FEEDER PIGS 135. US No. 1-3 20-35 lbs. feeder pigs 22.00-25.00 per head, No. 1-3 35-50 lbs. 32.00-49.00, No. 1-3 50-75 lbs. 52.00-64.50 per head.

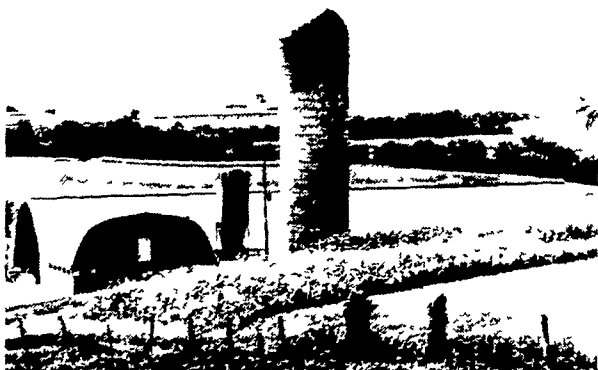
Laminated Rafters
The First Choice for Beauty, True Flexibility and Total Satisfaction.

'meets all our needs perfectly..'

Dairyman AUSTIN BECK located in York County, Pennsylvania has been pleased with his new 50x180 foot, 100 Cow Free Stall Barn and Milking Parlor constructed of Rigidply Laminated Rafters.

"Our Free Stall Barn has proven to be completely satisfactory for handling cows. I could not have built anything else that would have met our needs better."

Call for Information On Your Requirements



RIGIDPLY RAFTERS
Manufacturers of Laminated Rafters and Roof Trusses

RIGIDPLY RAFTERS, INC.
(717) 866-6581
Linden Street/Richland RD1, Pa. 17087
Oakland RD2, Md. 21550/(301) 334-4626

LEESPORT MARKET & AUCTION, INC.
North end of Leesport Turn East off Route 61
"WHERE FRIENDS MEET"

BERKS COUNTY'S ONLY WEEKLY CATTLE & SWINE AUCTION - WED. at 1 P.M.

FARMER'S MARKET Every Wed., 12 Noon to 9 P.M.

Garden Fresh Fruits & Vegetables - Bakery Fresh Cakes, Pies and Buns - Butcher Fresh Meats & Cheese - Sporting Goods - Clothing - Furniture - Jewelry - Used Items & Collectibles

Phone 215-926-1307 LeRoy Weist & John Weist, Mgrs.