

Poultry Market Reports

Weekly New York Egg Market

		Tuesday, October 14 to Friday, October 17				
		Mon.	Tues.	Wed.	Thurs.	Fri.
WHITE						
Ex. Large	H	61	61	61	61	61
Large	O	59	59	59	59	59
Mediums	L	56	56	56	56	56
Pullets	I	44	45	45	45	45
Peewees	D	32	32	32	32	32
BROWN						
Large	A	63	64	64	64	64
Mediums	Y					
Pullets		Unquoted				
Peewees		Unquoted				

		Off Grade				
		Mon.	Tues.	Wed.	Thurs.	Fri.
Large		53	54	54	54	54
Checks		37	37½	37½	37½	37½

Tone — Large sizes about steady; balance full steady.
Copyright 1975 Urner Barry Publications

Philadelphia Eggs

Wednesday, Oct. 15
Prices unchanged. Cartoning demand mixed ranging fair to good where sales activity involved with both mediums and large. Offerings of mediums barely adequate, large fully adequate, extra large adequate. Undertone steady.

Prices to retailers: Sales to volume buyers, consumer Grades Whites Eggs in Carton, Delivered: Store Door:

A Extra Large 64-65½, A Large 63-64½, A Medium 57½-60.

Baltimore Eggs

Thursday, Oct. 16

Market trending higher on small sizes while other sizes unchanged. Demand ranging slow to fair. Supplies adequate. Large 63-66, mediums 58-61.

New Holland Dairy

Wednesday Oct. 15, 1975

Reported receipts of 171 head of cows, 10 heifers and no bulls. Market was steady compared to last week.

Load of Wisconsin cows 610-960; load of Susquehanna cows 560-820 and springers 500-645; load of Pa. cows 385-

665 and springers 430-540.

Locally consigned cows 370-720; springing heifers 385-510.

Herd dispersal of 24 head in all stages of production 295-660; and a herd dispersal of 32 head in all stages 255-650

New England Weekly Shell Egg Report

Tuesday, October 14, 1975
Prices paid per dozen Grade "A" brown eggs in cartons delivered to retail stores:

	EX. LARGE	LARGE	MEDIUM	SMALL
MASS.+	67-75	66-75	62-69	46-55
Mostly	68-70	67-69	63-65	47-49
NEW HAMP.	65-72	64-71	60-67	44-51
Mostly	68-69	66-67	62-63	46-47
R. I.	70-71	69-70	65-66	50-51
VERMONT	69-77	68-75	64-70	
Mostly	69-73	68-71	64-68	
MAINE	68-71	68-70	64-66	48-50

+Includes Central and Western Sections Only.

Fogelsville

Sale of Tuesday, October 14
Prices paid dock weights, cents per pound, except where noted.

Hens, heavy type 14-30½, mostly 16-23; Pullets 40-49, mostly 40-45; Roasters 30-45, mostly 38-42; Ducks 40-59, mostly 55-59; Drakes 61; Rabbits 40-65, mostly 50-60; Guineas 60-1.01, mostly 1.00; Pigeons (per pr.) 1.01-3.00, mostly 3.00.

Total coops sold 336.
Poultry received Monday 7 p.m. to 10:30 p.m. Tuesday 7 a.m. to 12 Noon. Sale Tuesday at 12:30 a.m. Phone 215-395-6611.

Directions — Take Rt. 22 thruway. Exit at Fogelsville Exit. North to stop lite in Fogelsville, turn left,

Eastern PA & NJ

Live Hen Report Wednesday, Oct. 15

Prices continue to trend higher within an unchanged range. Demand good for slightly increased offerings of light type hens as plants working at about ¾ production. Offerings of heavy type hens adequate for a steady interest.

Prices paid at farm: Light type hens 7-9, mostly 8½ in PA., mostly 8-9 in NJ. Heavy type hens TFEWR.

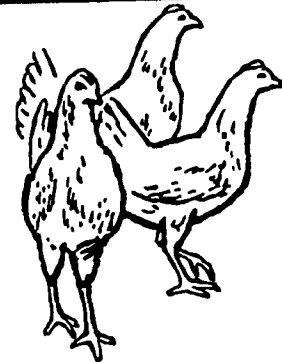
proceed one block, turn left again at Cracker Barrel Restaurant. Auction right side 100 ft. from your last left turn.

NEST RUN EGGS

Prices are from Egg Clearinghouse, Inc., (ECI) Durham, N.H. and reflect trading prices for gradeable nest run eggs (GNR) on ECI, a nationwide trading center for producers, packers and marketers. GNR eggs are classified by weight in 30-dozen cases, and traded in lots of either 300 or 750 cases. Prices are FOB buyers dock, and are computed Tuesday and Thursday of each week. This week's prices for each classification were:

Classification	New Weight Per Case	Wednesday Friday	
		Wednesday	Friday
Extra Large	51 lbs.	0	0
Class 1 - Large	48 lbs.	49	49
Class 3 - Medium	42 lbs.	47	47
Class 4 - Small	39 lbs.	36	36
Breaking Stock	48 lbs.	46	46
Checks	48 lbs.	39	39

TRY A CLASSIFIED



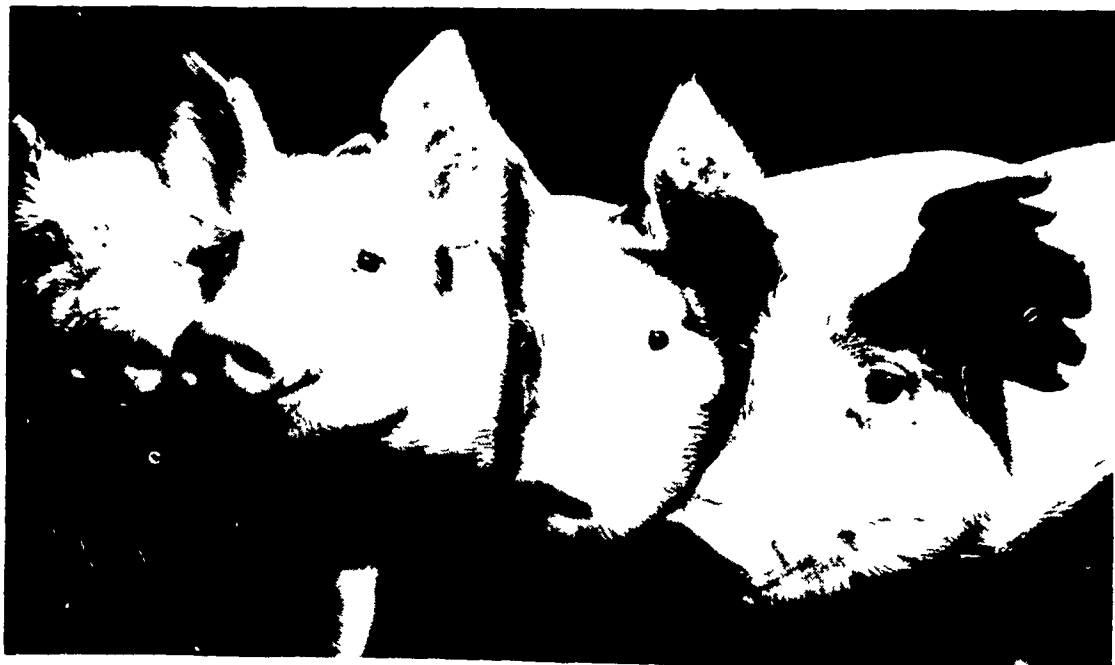
ATTENTION
EGG
PRODUCERS!!!

Contact us for competitive price before selling your Leghorn Fowl.

GOOD'S POULTRY INC.

Live Poultry Buyers & Haulers
RD1, Columbia, PA 717-684-2228

Protect your hogs... and your pork profits



ATGARD®

SWINE WORMER

...the best wormer for your money...

here's proof:

Dewormer	EFFICACY OF MAJOR FEED ROBBERS			
	Round-worms	Nodular Worms	Thick Stomach Worms	Whip-worms
ATGARD	99-100%	95-100%	90-100%	90-100%
BANMINTH	96-100	99-100	—1	—1
TRAMISOL	99-100	80-100	—1	—1
PIPERAZINE	75-100	50-2	—1	—1

1 No label indication
2 Critical studies unavailable however clinical evidence shows that it is less than 50% effective
Compiled from North Carolina Swine Parasite Control Program October 1975 Ext Folder 259 and selected Shell data

- For pigs, boars, open or bred gilts and sows
- Stops all four of the feed-robbing worms
- Kills worms before expulsion
- Worm pigs at weaning
- Worm sows 7-10 days before breeding and farrowing
- Always read and follow label directions

AVAILABLE FROM YOUR LOCAL FEED & FARM SUPPLY DEALER

Serviced by New Holland Supply Co.

or for additional information contact

SHELL CHEMICAL CO.
515 Haverhill Road
Lancaster, PA
Phone 717-569-7562

Lancaster Farming

P.O. Box 266 - Lititz, PA 17543

Office 22 E. Main St, Lititz, PA 17543
Record-Express Office Building

Phone: Lancaster 717-394-3047
or Lititz 717-626-2191

Dieter Krieg, Editor
Melissa Piper, Associate Editor
Jack Farmakis, National Sales Manager
151 Danforth Drive
New Canaan, Conn. 06840
Ph. 203-966-1746

Subscription Price \$3 per year
Established November 4, 1955

Published every Saturday by Lancaster Farming Lititz, PA

Second Class Postage paid at Lititz, PA 17543

Members of Newspaper Farm Editors Assn Pa Newspaper Publishers Association and National Newspaper Association