

Food marketing situation for October

As of mid-September, the supply situation in October is expected to look like this . . .

RED MEATS

Beef . . . plentiful. Output expected to be seasonally high and record large — about 5 percent above record of a year earlier, 10 percent greater than 1972-74 average for Oct. Prime and Choice grades, however, will continue to account for lesser share of total beef output than a year earlier. **Pork . . . light.** Even though output should increase slightly from Sept. levels, it is expected to be some 22 percent-25 percent below a year earlier and well under 1972-74 Oct. average.

POULTRY & EGGS

Broiler-fryers . . . adequate, with production about 10 percent ahead of year earlier, 7 percent over 1972-74 average for Oct.

Turkey . . . adequate. New-crop marketings expected to be slightly under Oct. 1974 and down 7 percent from 1972-74 monthly average. Oct. 1 cold storage holdings expected to be well under record high of Oct. 1974 but near most recent 3-year average for the date.

Eggs . . . adequate, with Oct. output likely to be about 3 percent under a year earlier, 6 percent less than 1972-74 average for Oct.

MILK & DAIRY PRODUCTS

Fluid milk, dairy products . . . adequate. July production was below 1972-74 average for the month. Examples: milk, down 2 percent; butter, 11 percent; American cheese, 4 percent; nonfat dry milk, 9 percent. Aug. milk production was 1 percent below Aug. 1972-74 average. In comparison with July 1972-74 averages, commercial stocks of butter and nonfat dry milk were down 46 percent and 36 percent respectively, while American cheese stocks were up 8 percent.

FRUITS, VEGETABLES, & NUTS

Fresh apples . . . plentiful. Record crop forecast at 13 percent above 1974 utilized production and 18 percent above 1972-74 average. **Fresh Bartlett pears . . . plentiful.** Output in Calif., Ore., and Wash. is expected to be 5 percent more than in 1974, 8 percent greater than in past 3-season average. Pear production in other states is 40 percent larger than last year, 27 percent above 1972-74 average. **Fresh grapes (mainly Tokay and Thompson seedless) . . . average** by 17 percent. **Cranberries . . . plentiful.** Near record crop to be 1 percent above last year's 7 percent bigger than 1972-74 average.

Canned non-citrus fruits . . . plentiful. Cannery stocks June 1 topped those of year earlier by 65 percent and were 26 percent above latest 3-year average for 12 canned fruit items. Cannery are now packing 1975 production of many fruits.

Raisins . . . plentiful, with large carryover from 1974 crop and prospects for a near-record grape crop in 1975. **Dried prunes . . . plentiful,** with 1975 output estimated at 2 percent larger than last year's average-size crop.

Frozen vegetables . . . plentiful. Holdings July 31 were 12 percent greater than those of a year earlier and 26 percent above 1972-74 average. Combined inventories of Frozen green peas, green beans, and sweet corn averaged a fourth larger than on July 31, 1974. **Frozen potatoes . . . plentiful,** with record-high July 31 inventory topping year-earlier stocks by 82 percent and the 1972-74 average by 66 percent.

Fresh potatoes . . . adequate, with harvest of large fall crop at seasonal peak.

Canned vegetables . . . adequate, except for green beans which should be plentiful (cannery holdings on July 1 - latest date for which figures are available - were more than double those on July 1, 1974, and the 1972-74 average.)

Peanuts . . . plentiful. July 31 stocks from record 1974 crop were 2 percent under 1974's high level. Another record crop is in prospect for 1975. **Walnuts . . . plentiful.** Record 1975 crop estimated to be 22 percent larger than

last year's output and 9 percent ahead of the record 1973 crop. **Almonds . . . plentiful,** because of large carryover from record 1974 crop. The 1975 crop is estimated at about 27 percent under 1974 crop.

Grains & Legumes

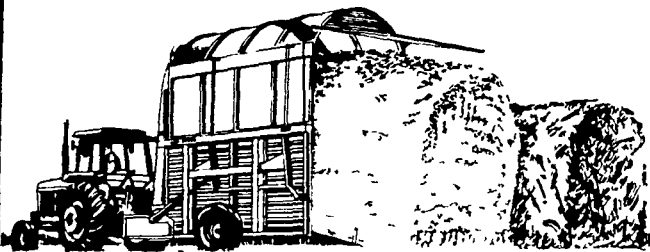
Wheat . . . plentiful. Production expected to be 19 percent above last year's record crop and 27 percent more than 1972-74 average. **Rice . . . plentiful.** With harvest in full swing, a record crop is forecast - 9 percent greater than previous high in 1974 and 28 percent ahead of most recent 3-year average. **Dry beans . . . plentiful,** with 1975 production expected to be 11 percent under last year's record crop, but 1 percent above latest 3-year average. **Dry peas . . . plentiful,** though crop to be about 32 percent below last year's output and 4 percent under 1972-74 average.

Corn . . . plentiful for food use. Record output predicted, 22 percent more than 1974 crop and about 7 percent greater than 1972-74 average.

Terminology used: PLENTIFUL - More than enough

(Continued on Page 59)

Put a new
**200 High-Density
Stack System**
on your farm today...



Pay no finance charges
until April 1, 1976.

That's right! If you purchase a John Deere 200 Stack Wagon, 200 Stack Mover, or 230 Shredder/Feeder and arrange for financing through John Deere Finance Plans, you pay no finance charges until April 1, 1976

Why not put this money-saving stack system on the job now . . . at a time when the cost will probably never be lower. Stop in and ask us for complete details, today

Landis Bros. Inc.
Lancaster 717-393 3906

A.B.C. Groff, Inc.
New Holland 717-354 4191

**Adamstown
Equipment Inc.**
Mohnton RD2, Pa 19540
[near Adamstown]
215 484 4391

**Pikeville
Equipment Inc.**
Oyster Dale Road
Oley RD#2 PA
215 987 6277

**M. S. Yearsley
& Sons**
West Chester 215 696 2990

Neuhaus'es, Inc.
Glen Rock Pa
717 235 1306

Agway, Inc.
Allentown Equipment Center
Chapman, Pa
215-395-3381

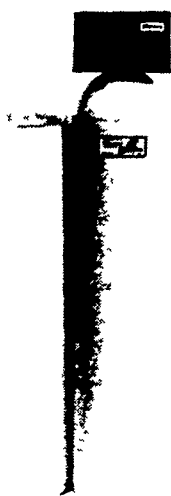
Stanley A. Klopp, Inc.
Bernville Pa
215-488-1510

I. G.'s Ag Sales
Silverdale, Pa 18962
215 257-5136

Myers

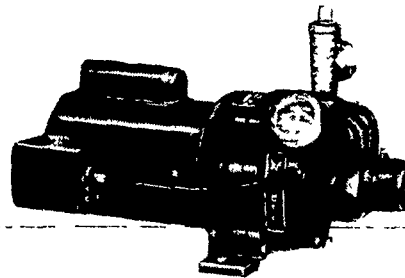
Before you select
your water system,
get the facts
on the complete
MYERS line.

**PUMPS • TANKS
• PLASTIC PIPE •
• WATER CONDITIONERS •**



WATER CONDITIONING
Fully Automatic or Manual, Cabinet
or Free Standing, Two Tank Models.

WATER FILTERS
Solves objectionable water prob-
lems. Fully Automatic or Manual.



"EJECTO" PUMPS
(convertible) Shallow well —
Capacities to 1800 GPH;
Deep Well — Capacities to
1260 GPH with well depths
to 180 feet.



**SUBMERSIBLE
PUMPS**
(for 4" wells)
Capacities to
3400 GPH, well
depths to 900 feet.

"Exclusive"
3 year Warranty
from date of
installation.



DISTRIBUTED BY:
BEIBLE'S PUMP & SUPPLY

• (Main Office) 419-27 Dalton St.
Emmaus, PA 18049

• (Branch) 1668 Wyoming Ave. Rt. 11
Forty Fort, PA 18704

AUTHORIZED MYERS DEALERS:

M.W. EISENHART
Center Valley Pa 18034
PHONE (215) 282-3550

WILLIAM S. PHILLIPS HARDWARE
Route 1
Stein's Corner Pa 18066
PHONE (215) 285 6290

FRANCIS L. SHIFFERT
Box 80
Palm Pa 18070
PHONE (215) 679-7153

EARL F. KEGERISE, INC.
Pricetown Road
Fleetwood, Pa 19522
PHONE (215) 944-8532

**RICHARD M. SCHAEFFER
SALES & SERVICE**
Route no 1 Box 88
Lenhartsville Pa 19534
Tel (215) 562-8362

**RICHARD B. SNYDER
SALES & SERVICE**
5th St, Mountain Rd
Route 2
Emmaus, Pa. 18049
PHONE (215) 965-9574

LONGACRE ELECTRIC, INC.
Bally Pa 19503
PHONE (215) 845-2261

SCHULTZ WELDING SHOP
Route 2
Easton, Pa 18042
PHONE (215) 759 1951

**STEWART PLUMBING
& HEATING CO.**
420 State St
Hamburg, Pa 19526
PHONE (215) 562-7006

PIKEVILLE IMPLEMENT SHOP
Oley Pa 19547
PHONE (215) 987 6277

CLARENCE R SEAMAN
Dauberville Pa 19517
PHONE (215) 926 8341

SHOLLENBERGER FARM SUPPLIES
4th & Pine St
Hamburg Pa 19526
PHONE (215) 562-2005