

HOG PRICES

Lancaster Market

HOGS: Barrows and gilts 75-1.00 higher.
BARROWS AND GILTS:
 US 1 210-235 lb. 65.50-66.00,
 US 1-2 200-240 lb. 65.00-65.25,
 US 1-3 195-260 lb. 64.50-65.00,
 mainly 64.85-65.00.
SOWS: US 2-3 300-575 lb.
 54.60-55.35, Few 550-600 lb.
 53.75-54.50.

Lancaster Auction

HOGS: Barrows and gilts 50 higher.
BARROWS AND GILTS:
 US 1 210-230 lb. 66.50, US 1-2
 200-240 lb. 65.50-65.85; US 1-3
 190-260 lb. 64.50-65.35; One lot
 US 2-3 255 lb. 64.10.
SHEEP: No market test.

TRY A CLASSIFIED AD

NOW IS THE TIME TO RESTOCK YOUR FEED LOT

Consult us with your stocker and feeder cattle needs. This is the height of the feeder season and we specialize in farm fresh cattle direct to your lot.

J. M. HOOBER INC.

FEEDER PIGS ARE AT AN ALL TIME HIGH.

Save 25c on every head of feeder pigs. We supply free state tags.

Next feeder pig Sale **OCTOBER 14**

Lancaster Stockyards

PLEASE CALL US SOON
 Phone (717) 397-6191,
 569-2084, 626-5659.

Vintage Auction

Vintage Hog Sales for Oct. 1, 1975 and Sept. 26, 1975 Not Reported.

New Holland Auction

Sept. 29, 1975
 HOGS 1675: Compared with last Monday's market. Barrows & Gilts \$1 to \$1.50 higher. US No. 1-2 200-240 lbs. 65.25-66.00, No. 1-3 200-250 lbs. 64.75-65.25, No. 2-3 190-260 lbs. 63.25-64.75, No. 1-3 150-180 lbs. 63.25-64.75. US No. 1-3 300-575 lbs. sows 51.00-55.00. Boars 45.00-59.00.

Indianapolis Auction

HOGS: 1000.
 Barrows and gilts moderately active, mostly 25 instances 50 lower.
BARROWS AND GILTS:
 14 head US 1-2 220 lb. 65.00;
 US 1-3 200-270 lb. 64.00-64.65,
 mostly 64.25-64.50.

HAY MARKETS

Green Dragon

Sept. 26, 1975
 (Not Reported).

Peoria Auction

HOGS: 2000.
 Barrows and gilts slow, opening 1.00 lower than Wednesday's best time.
BARROWS AND GILTS & US 1-2 200-240 lb. 64.00-64.50; US 1-3 200-260 lbs. 63.50-64.00.

St. Louis Auction

HOGS: 5000.
 Barrows and gilts only fairly active, fully 50, instances 75 lower.
BARROWS AND GILTS:
 US 1-2 200-240 lb. 64.25-64.50, around 250 head 64.50; US 1-3 200-250 lb. 64.00-64.25; US 2-3 220-260 lb. 63.00-64.00.

Leb. Valley Auction

HOGS 325. Barrows & Gilts strong. One lot US No. 1-2 215 lbs. barrows & gilts 65.60, No. 1-3 200-235 lbs. 64.75-65.10, No. 2-3 190-250 lbs. 64.25-64.75, No. 2-4 250-290 lbs. 61.00-64.50, No. 1-3 170-185 lbs. 62.25-64.00. US No. 1-3 350-550 lbs. sows 52.00-55.00.

Paul Z. Martin

Wednesday, Oct. 1
 16 loads of hay, straw and ear corn sold as follows:
 Alfalfa, 1 load 70.00;
 Timothy 60-76; Mixed Hay 43-94; 1 load Oat Straw 54; 2 loads old ear corn 75 & 78; 1 load new ear corn 53.

New Holland

Sept. 29, 1975
 Prices Per Ton:
 23 loads hay & 7 loads straw.
 Alfalfa, few loads 61.00-101.00, Timothy 68.00-90.00; Mixed hay 70.00-82.00, 2 loads 55.00 and 58.00; Straw 44.00-61.00; Clover, one load at 66.00; Corn 75.00-82.00, few loads 55.00-58.00; Hickory Nuts, 2 boxes at \$7.50 per box.

Regional

Hay Prices for Southeastern & So. Central Pennsylvania
 (All hay No. 2 and better, prices paid by dealers at the farm, price per ton.)
 Hay & Straw steady.
 Alfalfa 60.00-70.00; Mixed hay 50.00-60.00; Timothy hay 45.00-55.00; Straw 30.00-35.00; Mulch 15.00-28.00.

Futures Trading

(Closing bids as of Thursday, October 2)

	Chicago Cattle	Chicago Hogs	New York Maine Potatoes	Chicago Fresh Eggs
October	48.70	64.60		49.45
November			8.25	
December	47.40	65.50		58.80
January 1976				56.00
February	44.80	61.90		52.00
March			12.10	53.40
April	43.85	56.90	14.95	
May			18.65	

Trend — Cattle are Lower, Hogs are Higher, Potatoes are Stronger, and Eggs are Stronger.
 Markets Provided by Commodity Department
 Reynolds Securities, Inc.

Chicago Grain Futures

(Closing bids as of Thursday, October 2)

	Corn	Wheat	Soybeans	Soybean Meal
October				138.30
November			5.54%	
December	2.96%	4.10%	5.63%	140.60
January 1976				143.00
March	3.04%	4.24%		143.60
May	3.07%	4.26%	5.79	

Trend — Corn is Weaker, Wheat is Lower, Soybeans are Lower, and Soybean Meal is Lower.
 Markets Provided by Commodity Department
 Reynolds Securities, Inc.

U. S. Inspected Livestock Slaughter

Estimated Daily Livestock Slaughter Under Federal Inspection

	CATTLE	HOGS	SHEEP
Week to Date	573,000	977,000	128,000
Same Period Last Week	587,000	962,000	137,000
Same Period Last Year	522,000	1,257,000	150,000

REMEMBER US when you purchase cattle in Virginia this Fall . . . call us collect from the sale. **HAPPY TO SERVE YOU!!**

S. K. SHOTZBERGER, INC.

LIVESTOCK TRANSPORTATION

Gene Zwally, President
 Marvin Johns, Secy-Treasurer
 P.O. Box 925, Lancaster, Pa. 17604
 Phone: (717) 393-4641 (day or night)

PROFESSIONAL CONSULTATION FOR PROFESSIONAL FARMERS



Professional farmers need technical help. Our soil and nutritional analyses and recommendations are available to you to assist in getting the best possible profits.

WE SELL NO PRODUCTS . . . ONLY RECOMMENDATIONS!

We specialize in soil fertility, tillage and livestock nutrition problems. Our recommendations will help you make rational decisions to solve your problems.



Call:

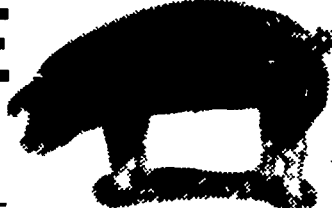
JOHN CAMPBELL
 Atglen, PA.
 (215) 593-5529

STUART HARNISH
 Pottstown, PA.
 (215) 469-6396



NEXT FEEDER PIG SALE

TUESDAY, OCTOBER 14



Consign all your feeder pigs to Walter M. Dunlap & Sons where they will be handled by a capable and experienced staff.

WALTER M. DUNLAP & SONS

LANCASTER STOCK YARDS

Consignors can get state tags at our office, thereby saving 25c marketing expense.

For Further Information, Call 717-397-5136



FOR BETTER NET RETURNS

SHIP TO THE

DANVILLE LIVESTOCK MARKET

Old Rt. 11 Danville, Pa.
 Phone (717) 275-2880

SALE EVERY MONDAY 2 P.M.

OWNERS

Charles C. Myers
 (717) 569-2106

Melvin M. Lehman
 (717) 964-3621