

G. Heilman Moving



who works in various media, will be opening a studio in Buena Vista, Colo. when she and her husband move there next summer.

Barbara Whipple (Mrs. Grant Heilman in private life), Sego Sego Road, inspects a print she has pulled from her press. The well known artist,

(Continued from Page 51)

narrow and dissatisfying life. There's something important about being surrounded by non-human life. I can only cite cities, which are in terrible problems, and one reason is that everything in them is so unreal."

"The young people seem to feel close to what I'm trying to say," he went on. They sense the dangers of overpopulation, pollution, crowded conditions, and they're willing to live on less rather than stay in urban areas, he said. Some older people are, too — big corporations are feeling this right now, and many are decentralizing and moving out of the big cities, he added.

Small towns — and more of them — are part of the answer, Heilman believes. He cites the relatively new towns of Columbia, Md. and Reston, near Washington, D.C., as examples of how this can be made to work.

He pointed to other small towns in the west and mid-west that were once thriving communities, now practically ghost towns. The young people moved out, but would love to go back now if there was something there to support them, he said. Some of the new generation are heading toward these places, turning their backs on the urban areas of the east, depending on their talents to trade and barter for a living, sparse though it might be.

AGWAY CHEMSTOR CORN

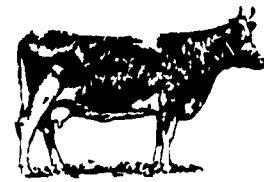
It's Cheaper than Drying.
It's done on the farm.
Animals prefer it.

Call Agway

394-0541
354-4526

786-2126
898-2248
653-1864

FRESH COWS EVERY WEDNESDAY IS DAIRY DAY SPRINGERS



AT NEW HOLLAND SALES STABLES, INC.
New Holland, PA

If you need 1 cow or a truck load, we have from 100 to 200 cows to sell every week at your price. Mostly fresh and close springing Holsteins.

Cows from local farmers and our regular shippers including Marvin Eshleman, Glenn Fite, Gordon Fritz, Blaine Hoffer, Dale Hostetter, H D Matz, and Jerry Miller.

SALE STARTS 12:30 SHARP

Also Every Wednesday, Hay, Straw & Ear Corn Sale 12:00 Noon.

For arrangements for special sales or herd dispersals at our barn or on your farm, contact

Abram Diffenbach, Mgr.

717-354-4341

OR

Norman Kolb

717-397-5538

HEIFERS

STOCK BULLS

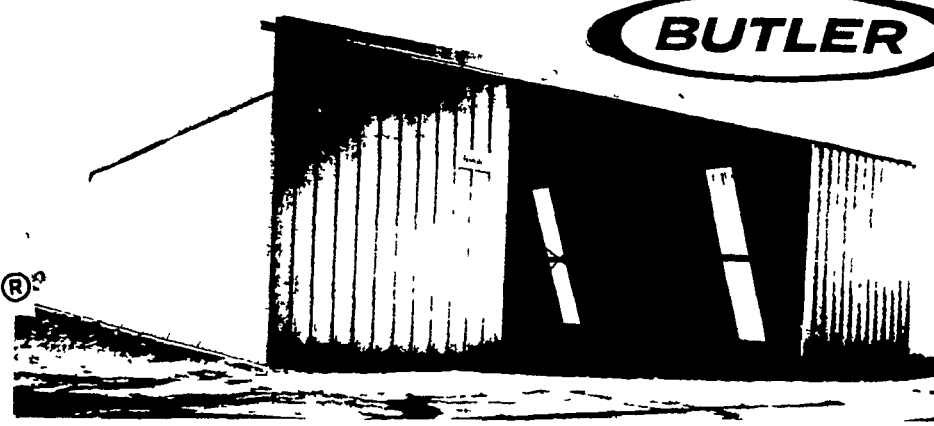
FAIR

MONTH SPECIALS

BUTLER

QUALITY EQUIPMENT

ONE TIME OFFER AT INFLATION-BEATING PRICES FOR SELF ERECTION



FARMSTED BUILDING

40' x 50' x 14'

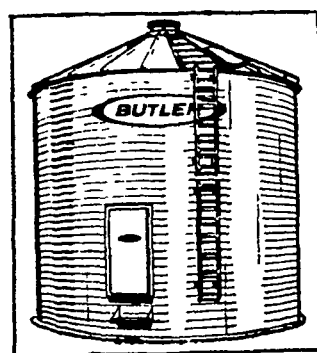
\$3295

In Galvanize with Our

Large 20' x 13'

Double Slide Door

Price F.O.B. Factory, Accessories, Taxes, Additional



18' x 18' 4,000 Bushel

GRAIN BIN

Now Just **\$1395**

Price F.O.B.

Factory, Accessories Additional



KAN-SUN BATCH DRYER

Portable, Automatic Batch Dryer, Dries and

Cools Grain At 90 Bushels Per Hour

Price Delivered (Electrical Wiring Not Included)

\$5800

Come By and Talk To Us About Your Needs Today

FARMILL CONSTRUCTION and REPAIR

Soudersburg, PA

Phone (717) 687-7659

PLEASE TEAR OFF AND MAIL TO

FARMILL Construction
Soudersburg, PA 17577

Please send me more information about New Butler
FARMSTEAD BUILDINGS GRAIN BINS DRYING OPERATION

NAME _____

ADDRESS _____

TOWN _____ STATE _____ ZIP _____

PHONE _____

