

# West Lampeter

(Continued from Page 16)

Calvert; Dorset, Dave Eckman, Pequea R1; Southdown, Harpster; Shropshire, Harpster.

Ewe lambs under 1 year - Suffolk, Mrs. Morgan; Hampshire, Ken Brubaker, Lancaster; Montadale, Cartey; Merino, Calvert; Dorset, Tim Donough; Southdown, Harpster; Shropshire, Harpster.

Champion ewes - Suffolk.

Morgan; Hampshire, Ken Brubaker; Montadale, Miss Cartey; Merino, Calvert; Dorset, Eckman; Southdown, Harpster; Shropshire, Harpster.

Reserve Champion ewe - Dorset, Tim Donough.

Three ewe lambs - Suffolk, Mrs. Morgan; Hampshire, Clyde Brubaker; Montadale, Miss Cartey; Merino, Calvert; Dorset, Eckman;

Southdown, Harpster; Shropshire, Harpster.

Pen of Lambs - Suffolk, Mrs. Morgan; Hampshire, Clyde Brubaker; Montadale, Miss Carety, Merino, Calvert; Dorset, Harpster; Southdown, Harpster; Shropshire, Harpster.

Breeder's young flock - Suffolk, Mrs. Morgan; Hampshire, Clyde Brubaker; Montadale, Miss Cartey; Merino, Calvert; Dorset, Eckman; Southdown, Harpster; Shropshire, Harpster.

Flock - Hampshire, Clyde Brubaker; Montadale, Miss Carety; Merino, Calvert; Dorset, Eckman; Southdown, Harpster; Shropshire, Harpster.

Get of Sire - Hampshire, Clyde Brubaker; Montadale, Cartey; Merino, Calvert; Dorset, Harpster; Southdown, Harpster; Shropshire, Harpster.

Market Lamb - First, Dorset, John Zander, Wakefield R1; Second, Hampshire, Ken Brubaker; Third, Dorset, Sarah Lynn Brubaker.

Lancaster Farming, Saturday, Sept. 27, 1975-17

## Pork producers slate cook-out

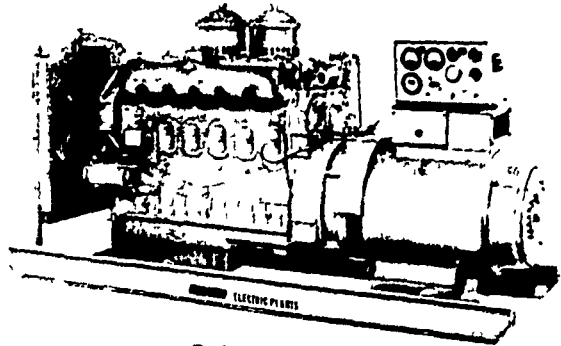
The Lancaster County Pork Producers will be sponsoring a Pork Cookout King contest to be held on Oct. 9, 7:30 p.m. in conjunction with the Manheim Farm Fair.

Entries are open to any men over 12 years of age. The contest is the local competition to promote pork and to select a "king" for the

state and national contests. Contestants will prepare a pork cut on an open grill and develop their own recipe by using Pa. agricultural products.

More information on the cooking contest can be obtained by contacting any member of the Lancaster Pork Producers or calling Abram Fisher at 717-768-8378.

**Electric Generating Systems**  
Built to Your Specifications  
Manual or Automatic  
L. P. Gas - Diesel - Gasoline -



Sales - Service

**Martin Electric Plants**

Isaac W. Martin, Owner  
Pleasant Valley Rd., RD2  
Ephrata, PA (717) 733-7968



Rain couldn't dampen the spirits of young Michele Dean, an exhibitor in the 4-H baby beef contest. Michele exhibited the second place Angus steer and won second in the junior showing contest.

## PennAg elects officers

GETTYSBURG - Melvin M. Wenger, Elizabethtown, has been elected president of PennAg Industries Association at the state-wide agribusiness association's 97th Annual Convention held here September 17-19, 1975 at the Sheraton Inn. Wenger will begin his term as president, January 1, 1976. At that time he will replace the current president, Phillip M. Spalding, York, Pa.

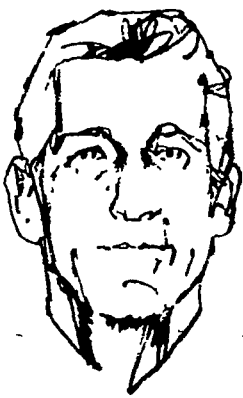
Wenger, a veteran agribusinessman, had operated Wenger's Feed Mill, Inc., Rheems, Pa. since he founded it in 1944. He is presently chairman of the board. A graduate of Juniata College, he is a past president of the Elizabethtown Lions Club. Other officers elected during the association's September 18 business meeting were: 1st vice president - W. H. Andrews, H. O. Andrews & Son, Mapleton Depot; 2nd vice president - William Ryan, Jesse Stewart Co., Pittsburg; 3rd vice president - Robert Weindel, Agway, Inc., Harrisburg; and Treasurer - Robert B.

Graybill, Pennfield Corporation, Rohrerstown.

At the same time the members elected as new directors: George W. Robinson, Kreamer Feed Store, Kreamer, Pa., and David Johnson, Clintondale Mills, Mill Hall, Pa. Re-elected as directors were: Warren Elfrank, Ralston Purina Co., Camp Hill; Carl Sandell, Sea Board Supply Co., Philadelphia; and D. Jay Wolgemuth, Wolgemuth Bros., Mt. Joy.

During the three day meeting over three hundred representatives of Pennsylvania's agribusiness community discussed, listened to, and studied problems confronting their industry. Speakers included federal and state officials, industry management and personnel specialists and educators. Topics discussed included: free enterprise system, personnel and management problems, rail reorganization update, energy crisis or rip off, future food production, politics, and agricultural research.

## Farmers Fertilizer Works, Inc. in Elizabethtown has been selected as your Certified Crop Care Center.



Ed Millhouse

In recognition of professionalism as a supplier of farm services Ed Millhouse of Farmers Fertilizer Works, Inc. has been named as a member of the new Certified Crop Care network.

Crop Care is a unique concept in farm supply service, especially designed for you, the progressive farm businessman.

Management takes time. Time to plan. Time to think. Time to make decisions. Good management also takes professional help and advice when and where it is needed.

Your Crop Care dealer offers these services, designed to give you the kind of professional help you need to better manage your cropping programs.

**1 Complete, accurate, soil testing service.** Your Certified Crop Care dealer will assist you in obtaining soil samples and will send them for you to a leading soil analysis laboratory. The laboratory soil analysis and computerized fertilizer recommendations will be reviewed with you and an application plan developed.

**2 Plant analysis.** Your Crop Care dealer will help you take samples, and handle all details of the tests. He will provide you the printed report analysis along with expert interpretation. This service pinpoints deficiencies in uptake of plant food nutrients.

**3 One-source responsibility** for your farm chemicals. Your Certified Crop Care dealer offers weed and pest control programs, as well as fertilization of your crop land. Your Crop Care dealer is qualified to render a complete range of services from planting to harvest.

### Your Certified Crop Care dealer pledges to offer farmers:

- Products and services best suited for maximum, efficient crop production under local growing conditions
- Sound counsel on crop production, based on soil test and plant analysis services
- Product application equipment and services that fit customer needs
- A staff of professional people with the experience, knowledge and capability to relate to local grower requirements
- A progressive retail business dedicated to building and maintaining high standards in quality of products and services

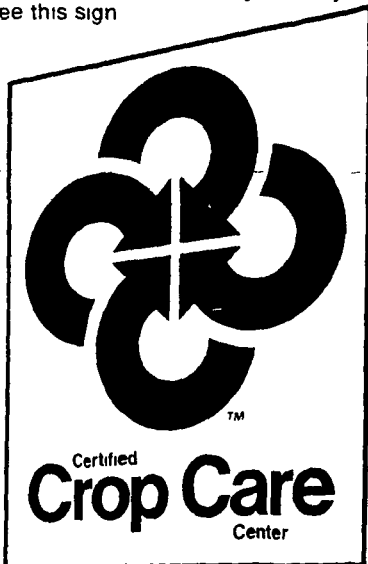
**4 Professional counsel.** Your Crop Care dealer is well informed on all matters associated with efficient and profitable crop production. He is a most valuable source of

information about successful farming ideas used in the area. And he can draw on the experiences and techniques of other Crop Care dealers, too.

**5 Skilled, professional application.** As a part of his total Crop Care service, your dealer offers custom application of fertilizer and other farm chemicals. Application may be made by one of your Crop Care dealer crews. Or he may arrange for application by a qualified applicator.

The services your Crop Care dealer offers are designed to help you get maximum yield, and to free up your time to do what you do best. Manage. Your Certified Crop Care dealer can provide professional advice and services to help you do it better.

Remember, you get Certified Crop Care Center services only where you see this sign.



Instant nonfat dry milk can be sprinkled over partially set gelatin and the mixture whipped into stiff peaks.

**NEW TOX-O-WIK II**

**CONTINUOUS FLOW GRAIN DRYER**

From the manufacturer of the world's largest selling recirculating batch grain dryers:

This compact true continuous flow dryer is equipped with a 27 inch axial heating fan, and a 24 inch cooling fan. The burner capacity has a maximum output of 3,000,000 BTU's. Single phase electric motors are standard or three phase is available as optional equipment. Safety controls included are drying temperature, flame failure, power failure, fan stoppage and fuel supply.

**FEATURES:**

- MORE CAPACITY FOR LESS MONEY
- EXCELLENT PORTABILITY
- PROVEN LOWER DRYING COSTS
- SIMPLE RUGGED TROUBLE FREE CONTROLS
- ON/OFF CYCLING
- SINGLE PHASE STANDARD THREE PHASE OPTIONAL

For More Information Call or Write

**SHENK'S FARM SERVICE**

501 E. Woods Drive Phone 626-1151  
Lititz, PA 17543