



In the 18th century, a tourist in Cornwall was rebuked for shooting a raven, which might have been the reincarnation of King Arthur!

Good news for contractors, landscapers farmers tire dealers, appliance dealers, gardeners motorcyclists movers, sportsmen campers travelers and everyone who has something to haul!

If you need a 4' x 7' to 8' x 16' utility trailer, I'll give you the best deal anywhere right here at my factory in Denver, PA



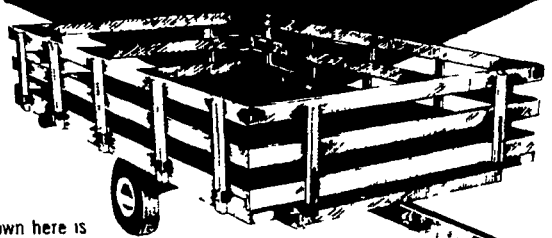
Roland Gehman
president of MGS Inc.
Denver, Pa.

NOW!

Famous MGS Heavy-Duty, Super-Tough

UTILITY TRAILERS DIRECT FROM THE FACTORY!

Here's one example of the famous MGS utility trailers you can buy direct from the factory at low direct to you prices!



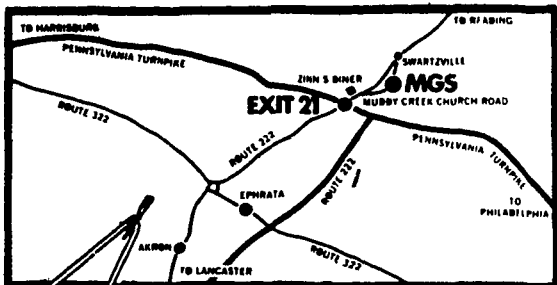
Shown here is model 720, 6' wide x 10' long Standard tire size 18 O x 5 70 x 8 Capacity 1500 lbs

SAVE 25% AND MORE

OFF REG. RETAIL PRICES (YOU PAY LOW FACTORY PRICES!)

The best utility trailers on the market today! 4'x7' to 8'x16' sizes! Capacities of 1000-lbs. to 4000-lbs.! Loaded with super deluxe features!

Weatherized exterior grade plywood deck! Structural steel sub frame! 7 deck supports—6 steel cross members and an additional steel beam across the back! Large recessed protected tail lights! Super strong tilt pivot mechanism! Ultra safe bed/tongue locking device! Heavy duty automotive wheel axle assemblies! Three ply springs! Weatherproofed 16 GA automotive type wiring! Automotive type tires! And many many other features including a wide range of options



MGS Muddy Creek Church Rd., R. D. 3, Denver, Pa. (1/2 mile E. of Pa. Turnpike—Exit 21) (215) 267-7528
OPEN DAILY 8 AM to 8 PM, SAT. 8 AM to 1 PM

Omaha Auction

Sept. 18

WEEKLY 51 - CATTLE - Compared with the previous weeks close - closing prices Slaughter Steers mostly steady, instances 25 cents higher. Heifers closed weak to 50 cents lower, with best demand for choice. High - Utility and Commercial cows steady, others weak to 50 cents off. Instances, 1.00 lower on Canner. Bulls firm.

FOUR DAY RECEIPTS 18,300 as compared 16,200 previous week and 14,000 a year ago. Slaughter steers approximately 45 pct. weeks total, Heifers 27 pct., cows 15 pct. and feeders for Friday auction little more than 20 pct. for third successive week, closing prices on Slaughter Steers and Heifers showed little net change for the period despite a sluggish movement of the finished produce at the wholesale level. However, Heifers were forced to yield somewhat in midweek trading. Supplies continued on the moderate side partially as a result of harvest operations getting into full swing over trade area and demand generally good. Monday run included liberal showing Good and Low-Choice steers and Heifers but a fair percentage Choice on later days with approximately 30 loads mostly Choice Steers and Heifers consigned on the 25th annual T-Bone special from the Audubon County Iowa area on Thursday. Overall finish slightly improved over past few weeks with a noticeable decrease in 900-950 lb. steers and 700-800 lb. Heifers. Livestock Slaughter continued to run at near

record level.

STEERS: Two loads High-Choice and Prime 1249-1286 lbs. Yield Grade 3-4 53.00, highest locally since late July. Seven loads Choice and Prime 1103-1225 lbs. Yield Grade 3-4 51.50-52.00. Choice 1150-1300 lbs. Yield Grade 2-4 mainly 49.00-50.50, several loads and prt. load average and High - Choice 50.75-51.00. Choice 975-1150 lbs. Yield Grade 2-4 48.00-50.25. Mixed Good and Choice 950-1200 lbs. 46.00-47.50, occasionally 47.75-48.00. Good 950-1300 lbs. 41.00-45.50, several loads 1150-1250 lb. Holsteins Yield Grade 2-3 41.00. Standard and Low-Good 37.00-39.00. Average of LS-214, detailed quotations, for Choice 900-1100 lb. steers this week 49.00, Choice 1100-1300 lb. 50.25.

HEIFERS: Load and part load high-Choice and Prime 933-970 lbs. Yield Grade 3-4 48.25-48.50 Tuesday. Several loads and part loads same grade 950-1025 lbs. 47.50-47.75 during week and load 1005 lbs. Yield Grade 4 47.00 late. Choice 850-1025 lbs. Yield Grade 2-4 Closed 45.00-46.50, few High - Choice 975-1025 lbs. 46.75-47.00. Choice 750-850 lbs. Yield Grade 2-3 44.00-45.50. Mixed Good and Choice 750-975 lbs. 43.00-45.00. Good 36.00-41.00. Small lots Standard and Good 32.50-34.00.

COWS: Utility and Commercial 22.00-24.50, few Commercial 25.00. Canner and Cutter 16.50-21.50, mixed Cutter and low-Utility 21.75-22.50.

BULLS: Yield Grade 1-2 1400-1800 lbs. 23.00-28.00, few Yield Grade 1 28.50-30.00.

Dewart Auction

Sept. 15, 1975

CATTLE 266. Compared with last Monday's market, slaughter steers steady, 50 cents higher. Slaughter cows 25 cents to \$1.25 higher. Choice slaughter steers 46.25-51.50, Good 40.00-45.50, Standard 32.00-38.50, few Utility 28.00-30.25. Few Choice slaughter heifers 36.25-36.50, few Good 34.00-36.50, few Standard 29.00-32.00. Utility & High Dressing Cutter slaughter cows 24.50-27.25, Cutters 22.00-24.00, Canners 19.00-21.75, Shells down to 13.00. Few Good slaughter bullocks 35.75-39.25, few Standard 30.75-32.25, few Utility 23.25-27.50. Few Yield Grade No. 1 1000-1600 lbs. slaughter bulls 26.25-31.00. Good & Choice 350-650 lbs. feeder steers &

bulls 29.00-38.50.

CALVES 175. Vealers grading Utility through Good \$3 to \$5 higher. Choice vealers 51.00-57.50, Good 42.00-51.00, Standard 32.00-42.00, Utility 90-110 lbs. 26.00-30.00, 70-85 lbs. 22.00-25.50. Farm calv holstein bulls 90-115 lbs. 28.00-31.50.

HOGS 209. Barrows & Gilts \$2.25 higher. US No. 1-3 195-235 lbs. barrows & gilts 62.50-63.00, No. 2-3 185-250 lbs. 62.40-62.60, lot No. 2-4 290 lbs. 59.80. US No. 1-3 325-600 lbs. sows 47.25-51.75. Boars 36.50-40.50.

FEEDER PIGS 162. US No. 1-3 15-20 lbs. feeder pigs 24.50-29.50 per head, No. 1-3 25-35 lbs. 30.50-37.00, lot No. 1-3 40 lbs. 43.50 per head.

SHEEP 3 Not enough of any one grade to establish a market.

Lancaster Farming, Saturday, September 20, 1975—9

Greencastle

Greencastle, Pa. Setp. 15, 1975

CATTLE 219. Compared with last Monday's market, slaughter cows unevenly steady. Few Good & Choice slaughter steers 41.10-44.85, one Utility at 24.60. One Choice slaughter heifer at 38.10, one Good at 33.60, one Utility 21.35. Utility & High Dressing Cutter slaughter cows 22.10-24.10, couple to 25.60, Cutters 20.00-22.25, few Canners 17.85-19.85, Shells down to 16.00. Yield Grade No. 1140-1620 lbs. slaughter bulls 26.20-28.85.

CALVES 208. Vealers grading Standard & Good \$2 to \$4 higher; Utility \$7 to \$8

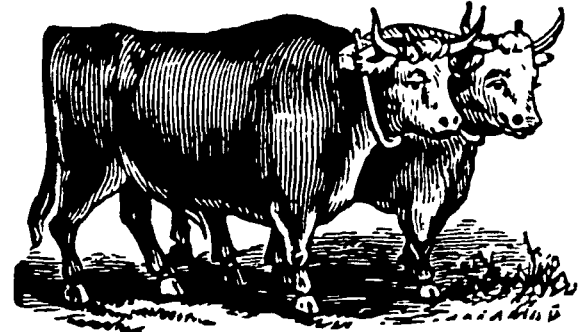
higher. Few Choice vealers 48.00-51.00, Good 41.50-49.00, Standard 32.00-39.50, Utility 90-115 lbs. 28.00-35.00, 70-85 lbs. 27.00-29.00. Farm calves, few holstein heifers 90-110 lbs. 35.50-47.00, few 70-90 lbs. 27.00-34.00.

HOGS 21. One lot US No. 1-3 230 lbs. barrows & gilts 63.00, few No. 2-3 210-220 lbs. 61.75-62.50, one lot No. 1-3 160 lbs. 48.00-50.00. One US No. 1-3 385 lbs. sow at 45.50. One Boar at 41.75.

FEEDER PIGS 9. One lot US no. 1-3 35 lbs. feeder pigs 34.00 per head.

SHEEP 2. Not enough of any one grade to establish a market.

Horsepower Development Paralleled Farm Growth

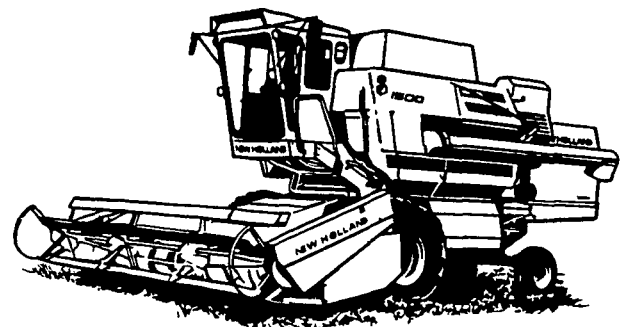


American agriculture today has a very "high-powered" look about it because of the size of modern farm machinery Tractors with 175 horsepower engines pull giant tilling implements across the prairies When the grain ripens in the wheat belt, giant self-propelled combines roar through the fields harvesting enough wheat in an hour for 20,000 loaves of bread

Farmers, who as young men, once pitched hay onto a

greatest advances was in the development of "horsepower" Not the kind we speak of today, but real horse power.

The important development of the "Conestoga" horses in the area around Lancaster, Pennsylvania, was overshadowed by the famed Conestoga Wagon, developed in the same area But it was the breeding of these horses that made productivity on the farms better and helped move the produce to the markets in



wagon with a pitchfork can now sit on the seat of a modern automatic bale wagon and zip through their hay-fields picking up, stacking and unloading tons of hay in comfort and without the back-breaking work experienced by their forefathers

Agriculture began an immediate development in America, and in the Revolutionary period one of the

Philadelphia

Oxen were used for tilling and other farm jobs that required muscle power. But, the long haul over rough roads between the farm and markets ruled out the efficient use of oxen The Conestoga horse provided the combination of power for farm work and speed for road travel

The Lancaster area was the home of the most competent farmers in the colonies and many improved farming practices were developed here by the Pennsylvania Germans Today, Lancaster County continues to lead the nation in productivity of its farms. The county is the top non-irrigated farm income-producing county in the United States.

CONSERVATION: Of the seven million barrels of gasoline consumed daily in America, about 20% is by "non-essential" driving, according to an Amoco Oil Company motorist study. Also, says the company, overall energy use in 1985 will more than double 1955 figures at present consumption levels.

FIRE HAZARDS: U.S. Census Bureau says there are annually some 5.6 million household and personal-appliance fires in this country. Number one cause: household appliances.

SERVICE IS OUR BUSINESS

READY MIX CONCRETE FOR EVERY PURPOSE

Cocalico Concrete

A DIVISION OF A G KURTZ & SONS INC

•Crushed Stone •Ready Mixed Concrete •Asphalt Paving

DENVER RD 1

PHONE 267-7591