

Local Livestock Market, Auction News

Pa. Auction Summary

Week Ending September 5, 1975
Weekly Summary 14 Livestock Markets
CATTLE: 5890. Compared with 8351 head last week, and 5774 head a year ago. Compared with last Friday's summary, slaughter steers unevenly steady. Slaughter heifers mostly steady to \$1 lower. Slaughter cows mostly steady to 50 cents higher. Slaughter bullocks mostly steady to \$2 lower. Slaughter bulls steady to

strong.
STEERS: Choice 46.00-53.10, Good 39.00-47.00, Standard 30.00-40.00, Utility 23.00-30.00.
HEIFERS: Choice 38.75-43.00, Good 30.50-38.50, Standard 27.00-30.50, Utility 22.00-27.00.
COWS: Utility and High Dressing Cutter 22.50-25.00, Cutters 20.50-23.00, Canners 17.00-21.00, Shells down to 12.00. **BULLOCKS:** Choice 33.00-40.00, Good 30.00-35.00, Standard 24.75-31.00, Utility

21.00-27.50. **BULLS:** Yield Grade No. 1, 1000-2000 lbs. 28.50-32.00, Yield Grade No. 2, 900-1600 lbs. 24.50-29.00. **FEEDER CATTLE:** Good 350-800 lbs. steers 28.00-32.50, Medium 350-800 lbs. 16.00-25.00. Medium and Good 300-700 lbs. heifers 14.00-25.00. Medium 300-800 lbs. bulls 16.00-22.00.
CALVES 3624. Compared with 5228 head last week, and 4144 head a year ago. Vealers fully \$2 to \$3 higher. **VEALERS:** Choice 31.00-

68.00, Good 41.00-54.00, Standard 31.00-43.00, Utility 110-130 lbs. 25.00-35.00, 90-110 lbs. 19.00-27.00, 65-85 lbs 15.00-21.00. **FARM CALVES:** Holstein bulls 70-125 lbs. 21.00-33.00; Beef cross bulls and heifers 70-135 lbs. 20.00-32.00

HOGS 5470. Compared with 7531 head last week, and 6879 head a year ago. Barrows and gilts steady to 50 cents higher. **BARROWS & GILTS:** US No. 1-2 200-235 lbs. 60.75-71.50, No. 1-3 190-245 lbs. 59.75-60.75, No. 2-3 185-260 lbs. 57.75-59.75, No. 2-4 250-375 lbs. 50.00-57.00, No. 1-3 110-180 lbs. 45.00-57.00. **SOWS:** US No. 1-3 300-600 lbs. 47.00-55.00, No. 2-3 350-720 lbs. 42.00-50.00. **BOARS** 37 00-44.00.

FEEDER PIGS 1063. Compared with 1707 head last week, and 1487 head a year ago. US No. 1-3 20-35 lbs. 25.00-38.00 per head, No. 1-3 35-50 lbs. 34.00-46.00, No. 1-3 50-125 lbs. 49.00-62.00, Utility 15-35 lbs. 17.00-26.00 per head.

SHEEP 494. Compared with 1140 head last week, and 677 head a year ago. Spring slaughter lambs unevenly steady, spots \$2 lower.

New Holland Dairy

Wednesday, Sept. 10
 Reported receipts of 68 cows and 2 bulls. Market steady with last week. Load of Pa. cows fresh 550-825; springers 350-800; load of Franklin County cows

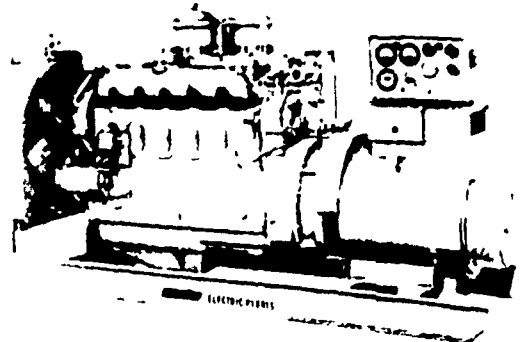
fresh 475-830; springers 575-900.
 Cows consigned locally 375-530; springing heifers 360-545 and bulls 165-290

TRY A CLASSIFIED AD

Electric Generating Systems

Built to Your Specifications
 Manual or Automatic

L. P. Gas — Diesel — Gasoline —

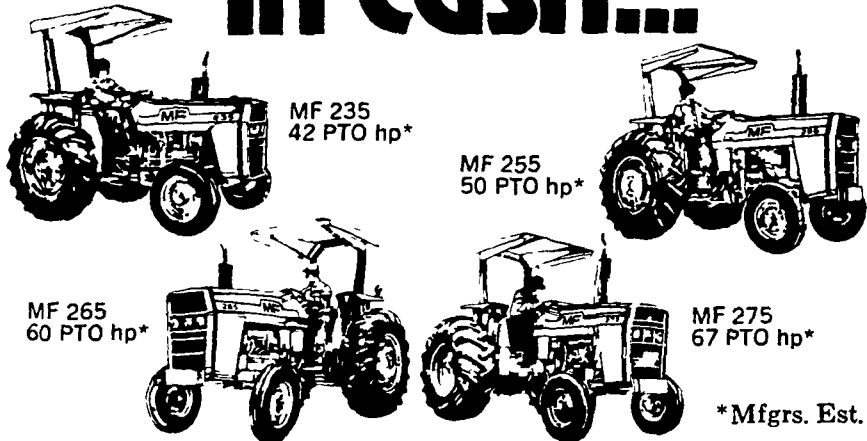


Sales - Service

Martin Electric Plants

Isaac W. Martin, Owner
 Pleasant Valley Rd., RD2
 Ephrata, PA (717) 733-7968

Four powerful ways to pocket up to \$450 in cash...



*Mfgs. Est.

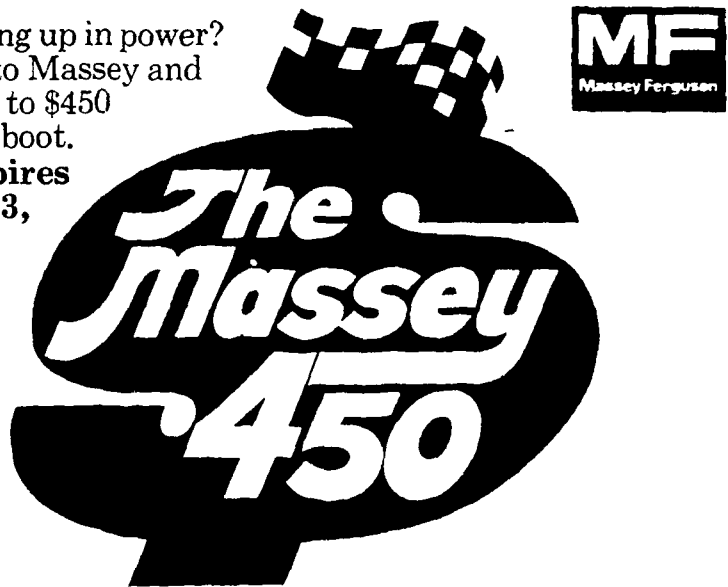
If you've been waiting for just the right deal on a 40-70 hp tractor, you just found it. It's called the Massey 450.

This special offer allows your Massey-Ferguson dealer to put you behind the wheel of any one of these tractors at exceptionally low prices, plus you'll receive a special factory cash bonus from \$350 up to \$450.

Buy a Massey 235 with manual steering and we'll send you a check for \$450. Buy an MF 255, MF 265, MF 275, or MF 235 power steering, and you'll get \$350 in cash.

Moving up in power? Move up to Massey and pocket up to \$450 in cash to boot.

Offer expires October 3, 1975.



N. H. FLICKER & SONS INC.
 Maxatawny
 Phone (215) 683 7252

HEITZMAN EQUIPMENT, INC.
 Rts 100 & 401
 Glenmoore Pa
 Phone 458 5777
 or 458 8525

A. L. HERR & BRO.
 312 Park Ave
 Quarryville Pa
 Phone 786 3521

S. G. LEWIS AND SON
 West Grove, Pa
 (215) 869 9440 869 2214

LEBANON VALLEY M. IMPLEMENT CO.
 700 E. Linden St
 Richland Pa
 Phone 866 2544

M. WEAVER & SONS
 North Groffdale Road
 Leola Pa 17540
 Phone (717) 656 2321



It takes money to run a chicken

and a tractor, a brooder house, a farm. We know... because we've been making farm loans for years. New machinery, breeding stock, new buildings, additional land, all cost money. We can arrange to lend you money... but, the important thing is the way you can pay it back, over the number of years to suit your cash flow. Take a new view of your farm—what it needs, what would make it more profitable.

Then see us for a new viewpoint on farm loans

a new view



NEW HOLLAND FARMERS NATIONAL BANK

Your Family Banking Center

Offices in New Holland and Smoketown

A FULL SERVICE BANK

Member F.D.I.C.